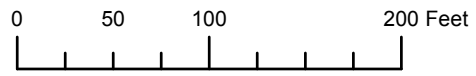


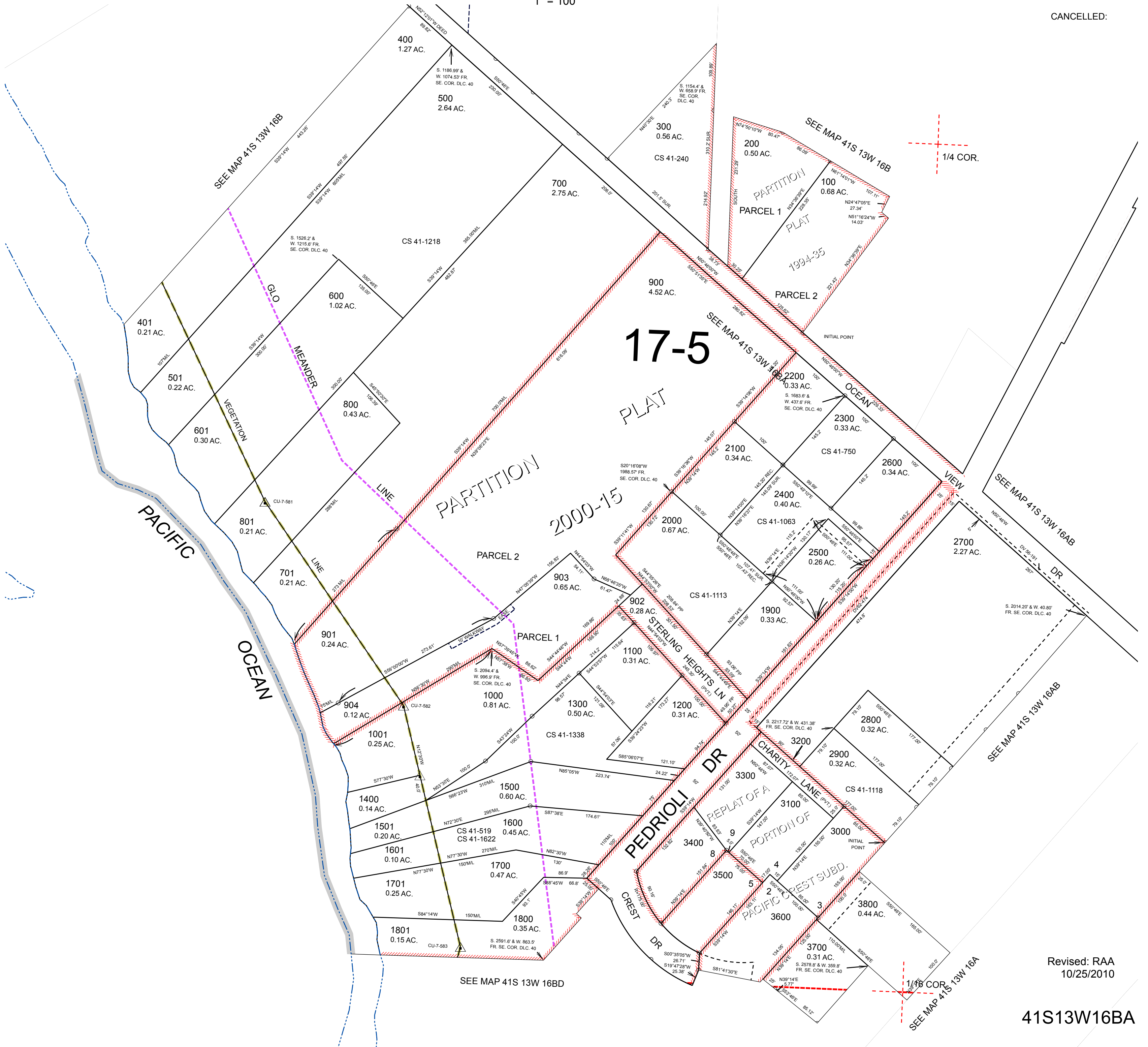
THIS MAP WAS PREPARED FOR ASSESSMENT PURPOSE ONLY



N.E.1/4 N.W.1/4 SEC.16 T.41S. R.13W. W.M.  
CURRY COUNTY  
1" = 100'

41S13W16BA

CANCELLED:



17-5

PARTITION

2000-15

PLAT

PARCEL 1

PARCEL 2

REPLAT OF A PORTION OF

PACIFIC WEST SUBD.

CREST DR

PEDRIOLI DR

STERLING HEIGHTS LN

CHARITY LANE

VEGETATION LINE

GLO MEANDER LINE

INITIAL POINT

1/4 COR.

1/16 COR.

Revised: RAA  
10/25/2010

41S13W16BA

THIS MAP WAS PREPARED FOR ASSESSMENT PURPOSE ONLY

NE1/4 NW1/4 SECTION 16 T.41S. R.13W. W.M. CURRY COUNTY

41S 13W 16BA

1" = 100'

