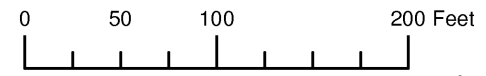


THIS MAP WAS PREPARED FOR ASSESSMENT PURPOSE ONLY

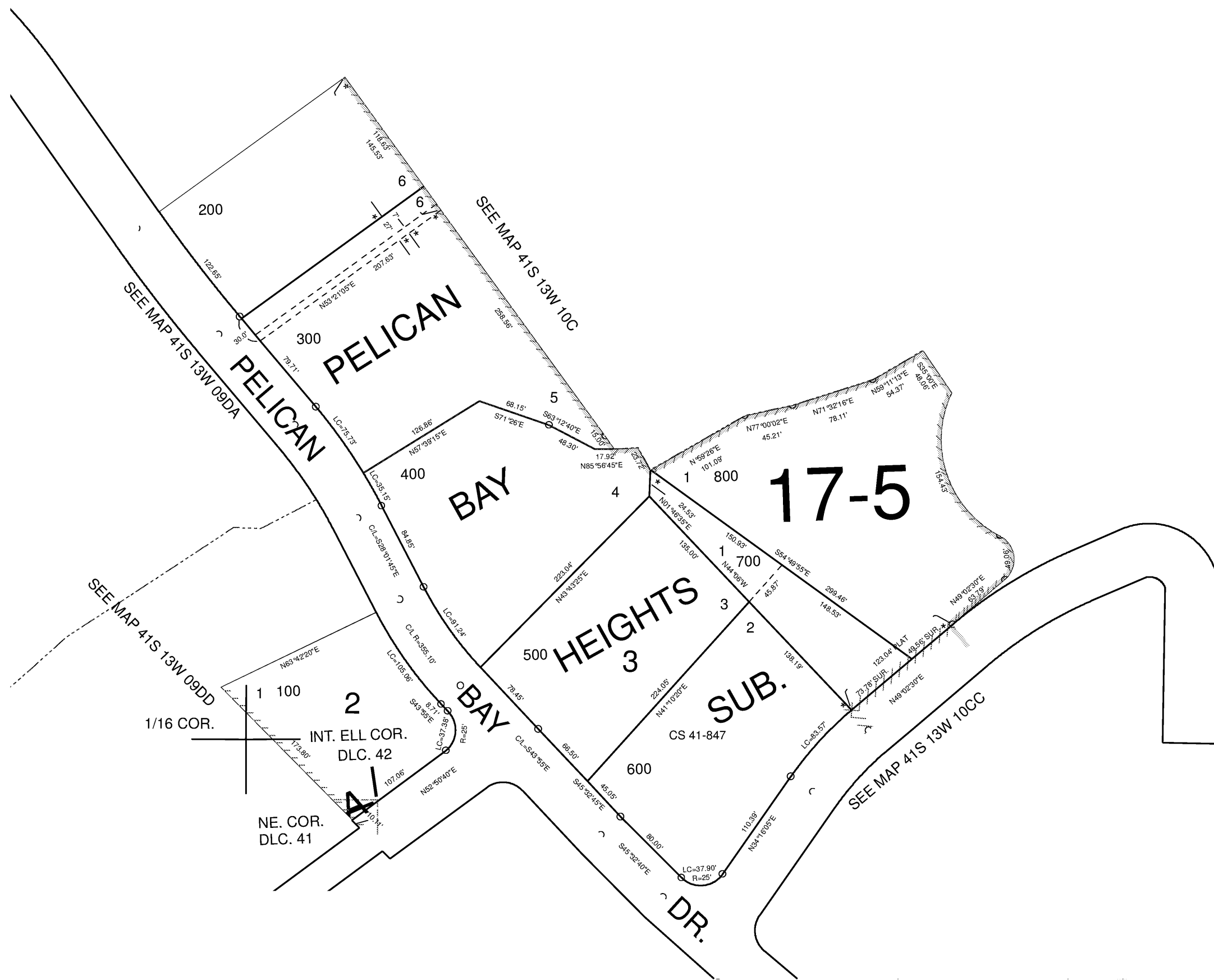
NW1/4 SW1/4 SECTION 10 T.41S. R.13W. W.M.
CURRY COUNTY
1" = 100'

41S 13W 10CB
CANCELLED NO.
201



1/4 COR.

1/16 COR.



1/16 COR.