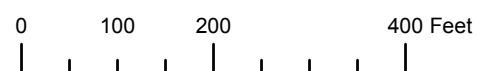


THIS MAP WAS PREPARED FOR ASSESSMENT PURPOSE ONLY

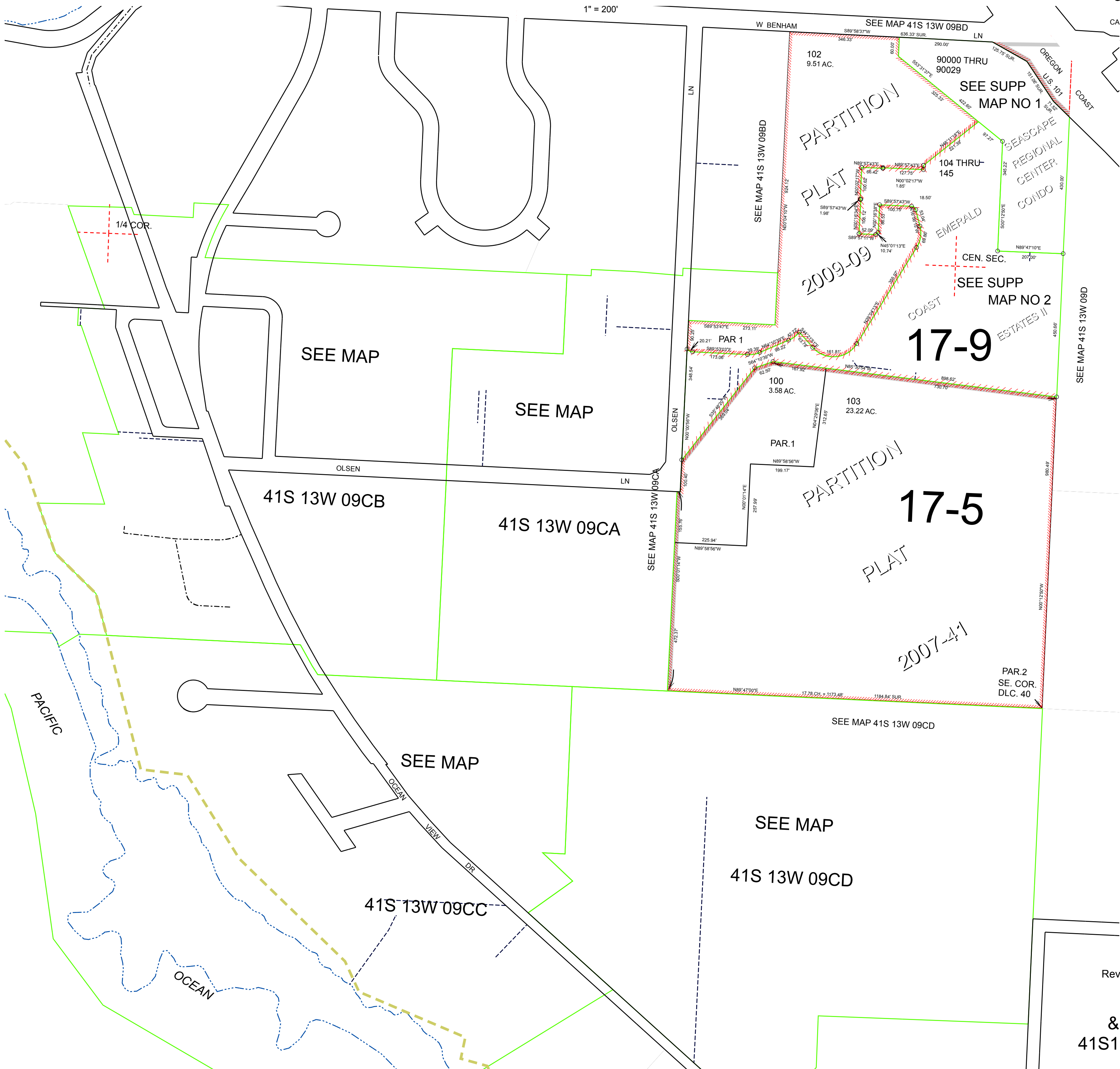


S.W.1/4 SEC.9 T.41S. R.13W. W.M.
CURRY COUNTY

1" = 200'

41S13W09C
& INDEX

CANCELLED:
101
200 THRU 3001



17-9

17-5

2007-4,1

PARTITION
PLAT
2009-09

PARTITION
PLAT
2007-4,1

SEE SUPP
MAP NO 1

SEE SUPP
MAP NO 2

SEE MAP

SEE MAP

SEE MAP

SEE MAP

Revised: RAA
4/28/2010

& INDEX
41S13W09C

THIS MAP WAS PREPARED FOR ASSESSMENT PURPOSE ONLY

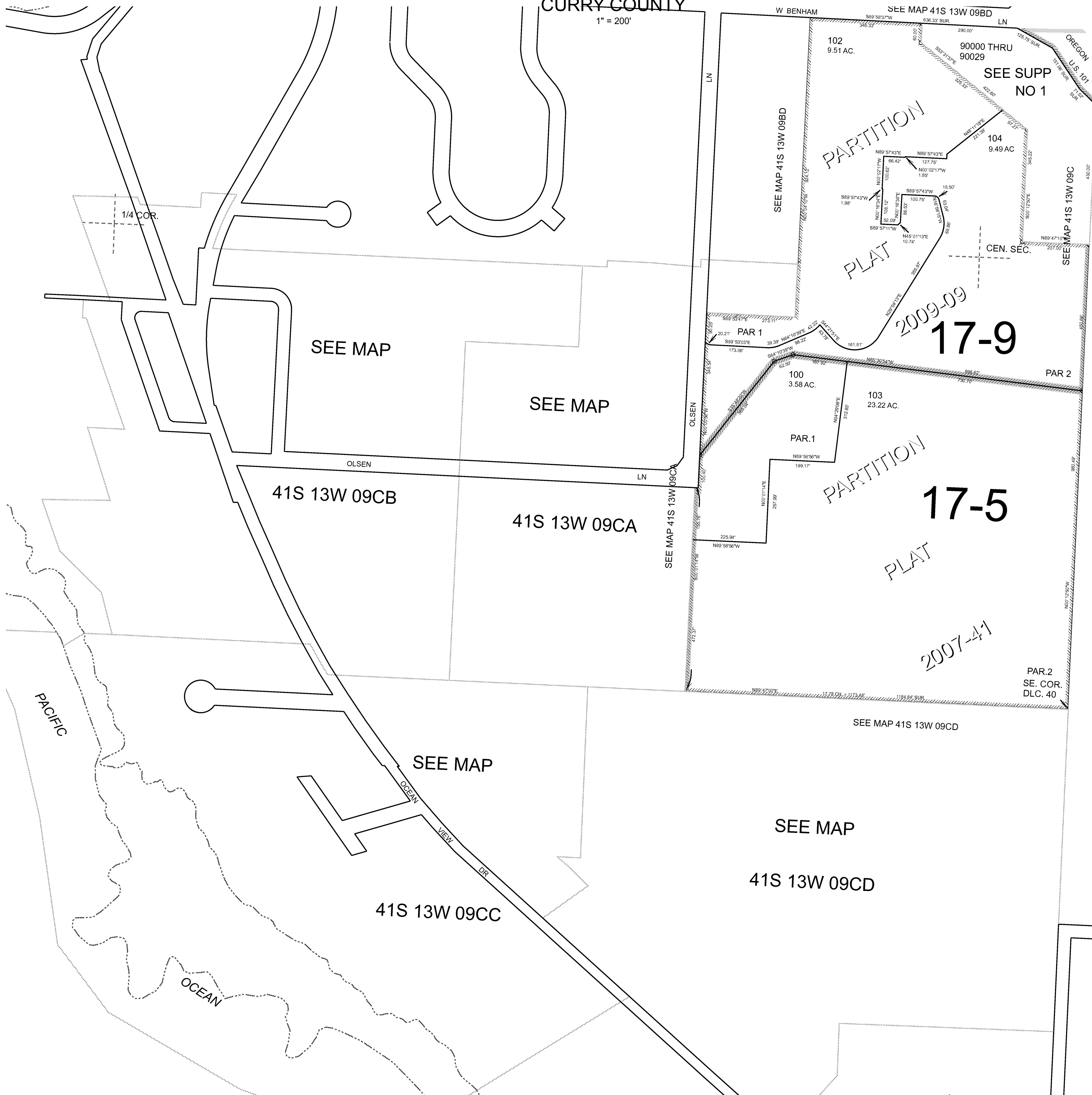
0 100 200 400 Feet

S.W.1/4 SEC.9 T.41S. R.13W. W.M.
CURRY COUNTY

1" = 200'

CANCELLED:
101
200 THRU 3001

41S13W09C
& INDEX



2009-09
17-9

17-5

2007-41

Revised: RAA
7/8/2009
& INDEX
41S13W09C

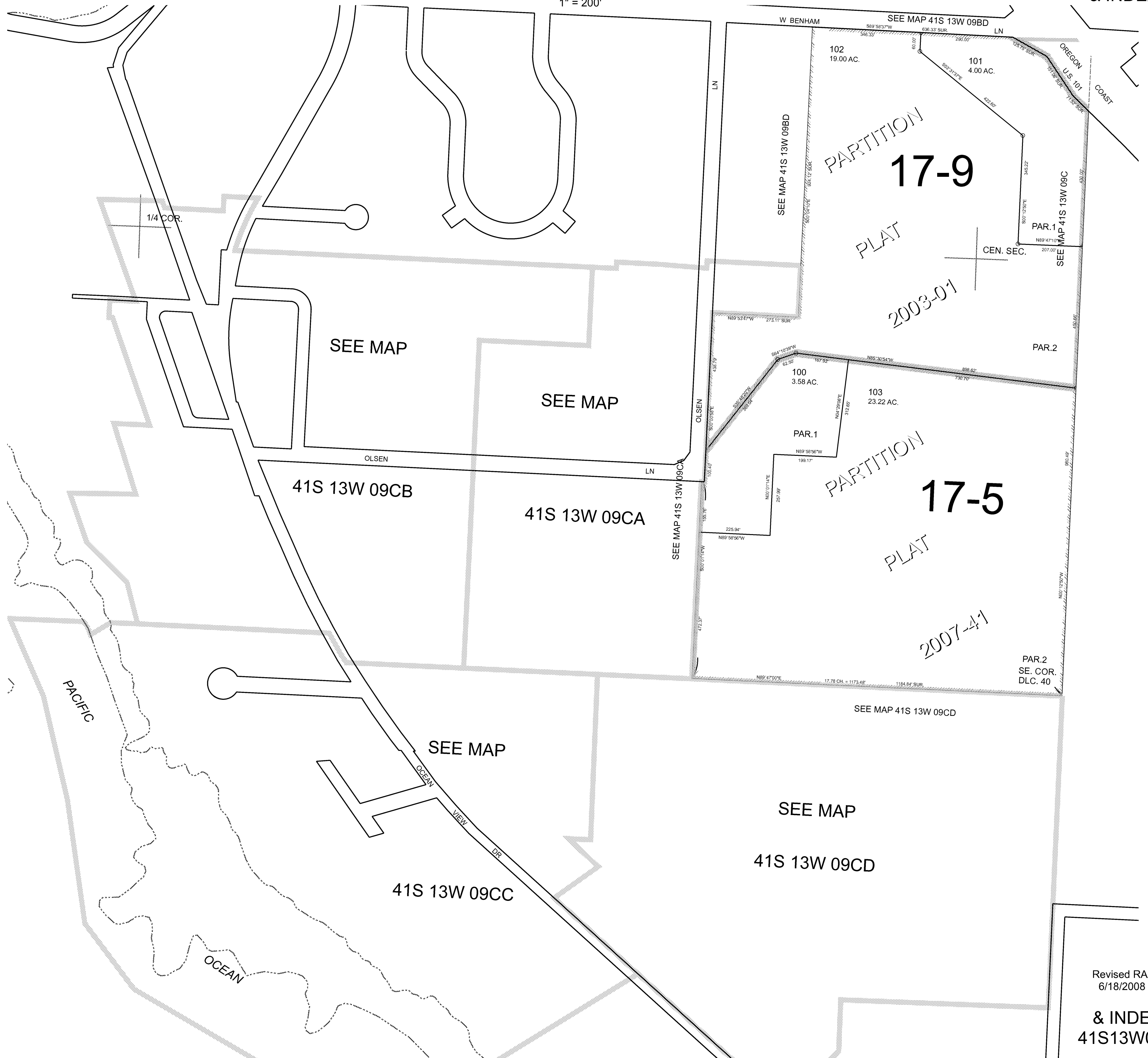
THIS MAP WAS PREPARED FOR ASSESSMENT PURPOSE ONLY

0 100 200 400 Feet

S.W.1/4 SEC.9 T.41S. R.13W. W.M.
CURRY COUNTY
1" = 200'

CANCELLED:
200 THRU 3001

41S13W09C
& INDEX



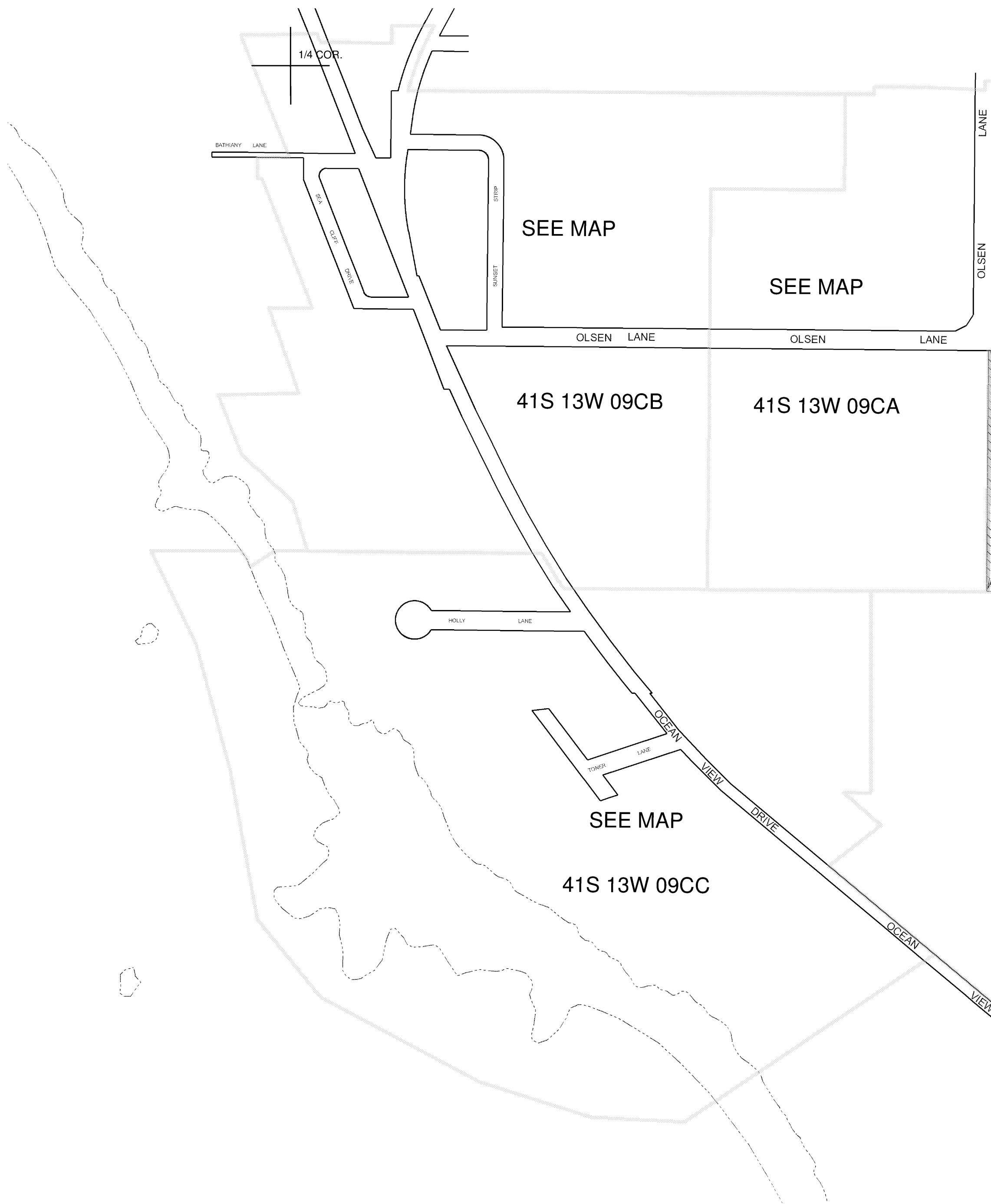
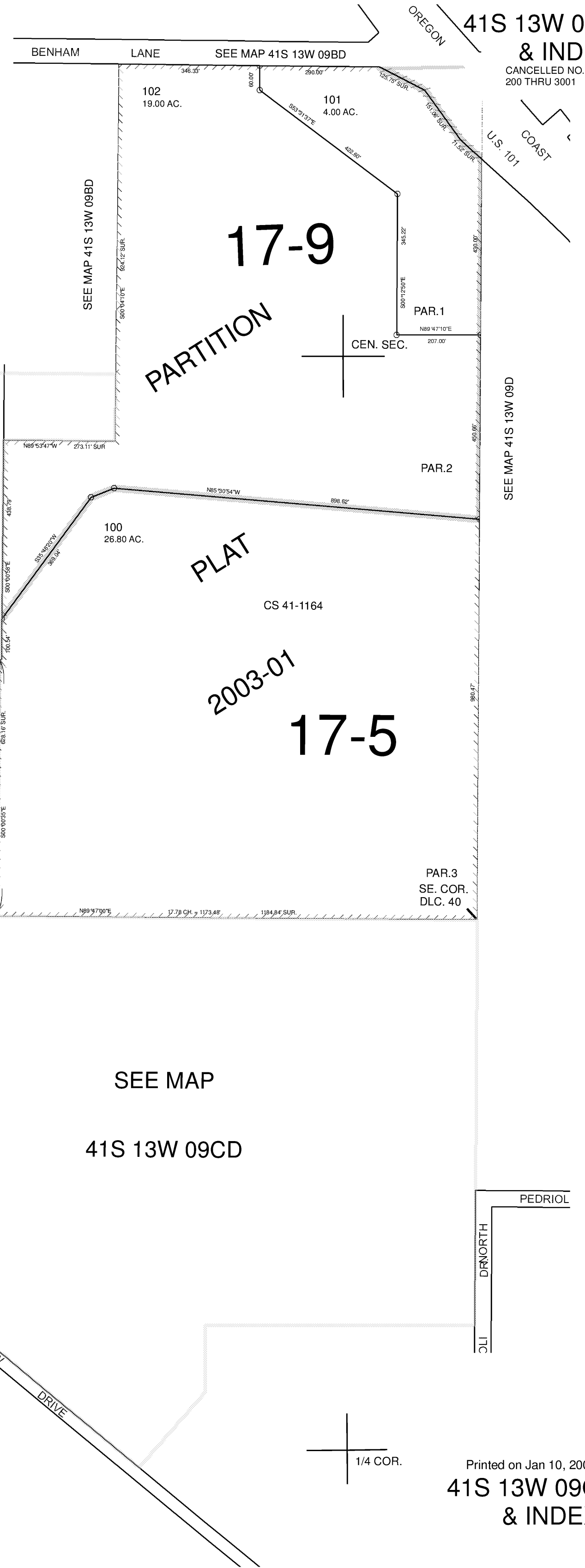
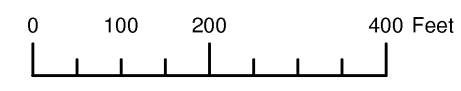
Revised RAA
6/18/2008

& INDEX
41S13W09C

THIS MAP WAS PREPARED FOR ASSESSMENT PURPOSE ONLY

SW1/4 SECTION 09 T.41S. R.13W. W.M. CURRY COUNTY
1" = 200'

41S 13W 09C & INDEX
CANCELLED NO. 200 THRU 3001



17-9
PARTITION

PLAT
2003-01
17-5

1/4 COR.