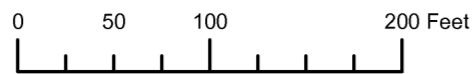


THIS MAP WAS PREPARED FOR ASSESSMENT PURPOSE ONLY

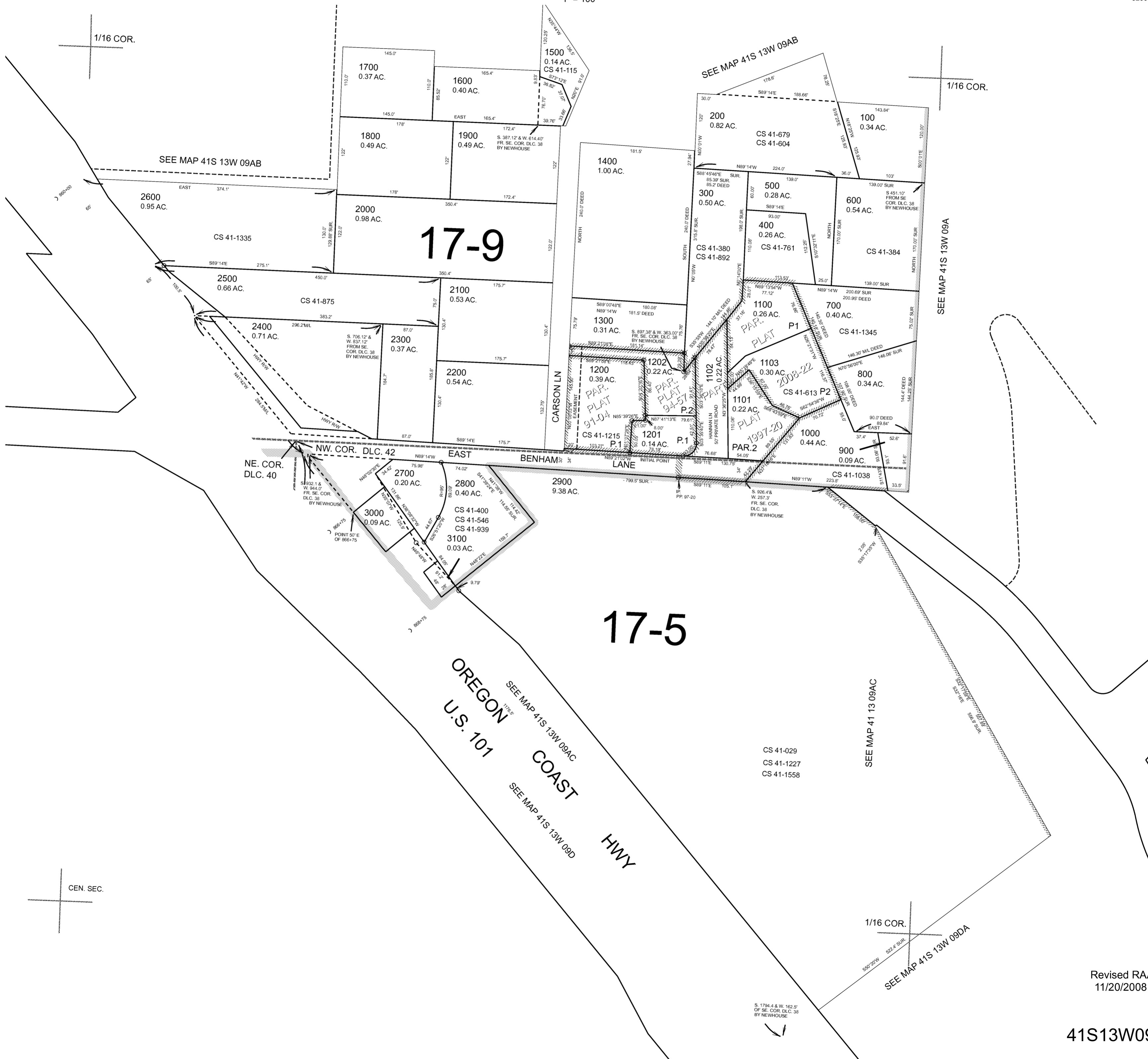


S.W.1/4 N.E.1/4 SEC.9 T.41S. R.13W. W.M. CURRY COUNTY

41S13W09AC

CANCELLED: 3200

1" = 100'

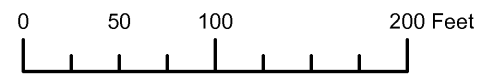


CS 41-029
CS 41-1227
CS 41-1558

Revised RAA
11/20/2008

41S13W09AC

THIS MAP WAS PREPARED FOR ASSESSMENT PURPOSE ONLY

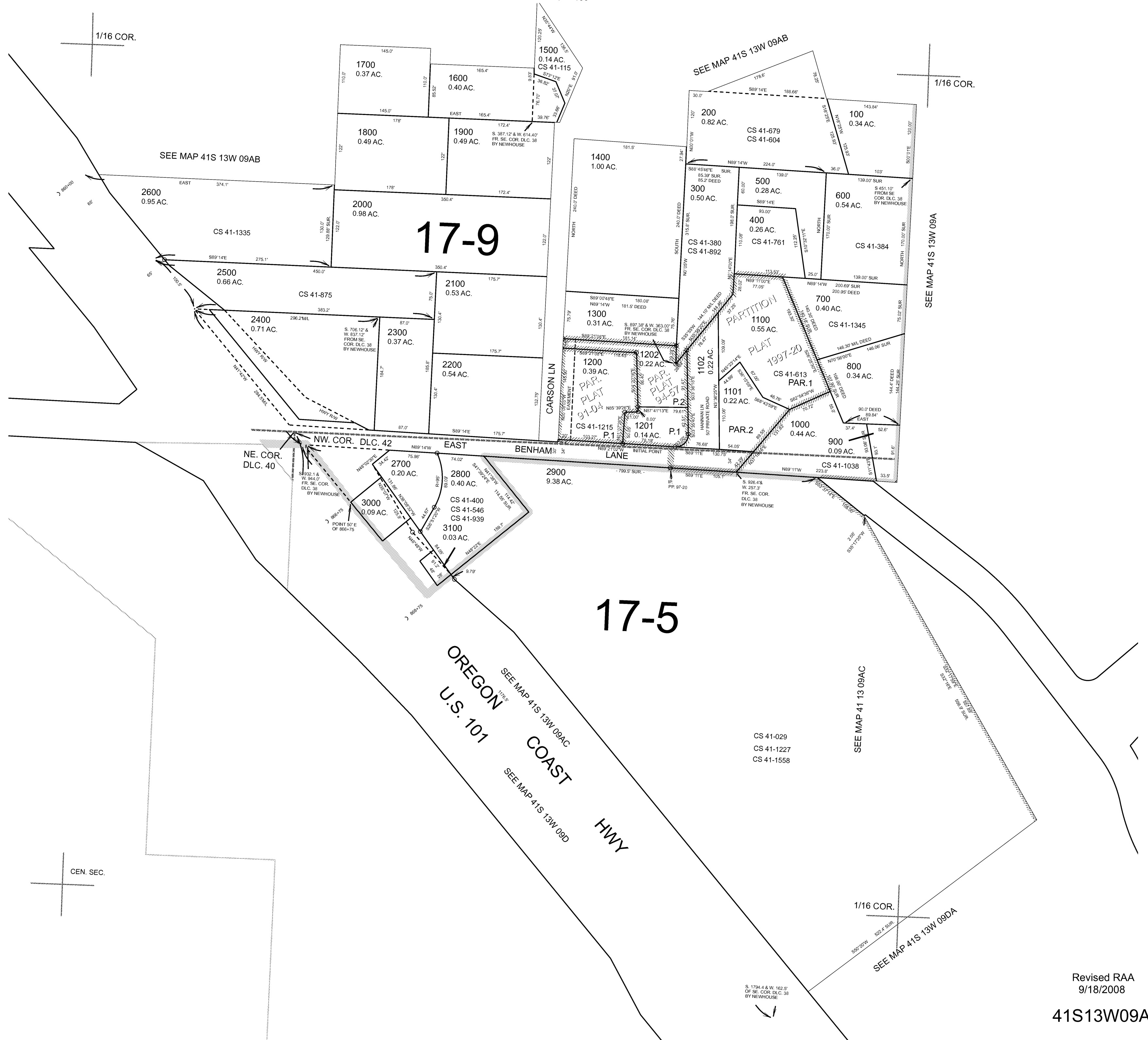


S.W.1/4 N.E.1/4 SEC.9 T.41S. R.13W. W.M. CURRY COUNTY

1" = 100'

41S13W09AC

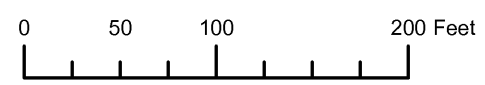
CANCELLED: 3200



Revised RAA 9/18/2008

41S13W09AC

THIS MAP WAS PREPARED FOR ASSESSMENT PURPOSE ONLY

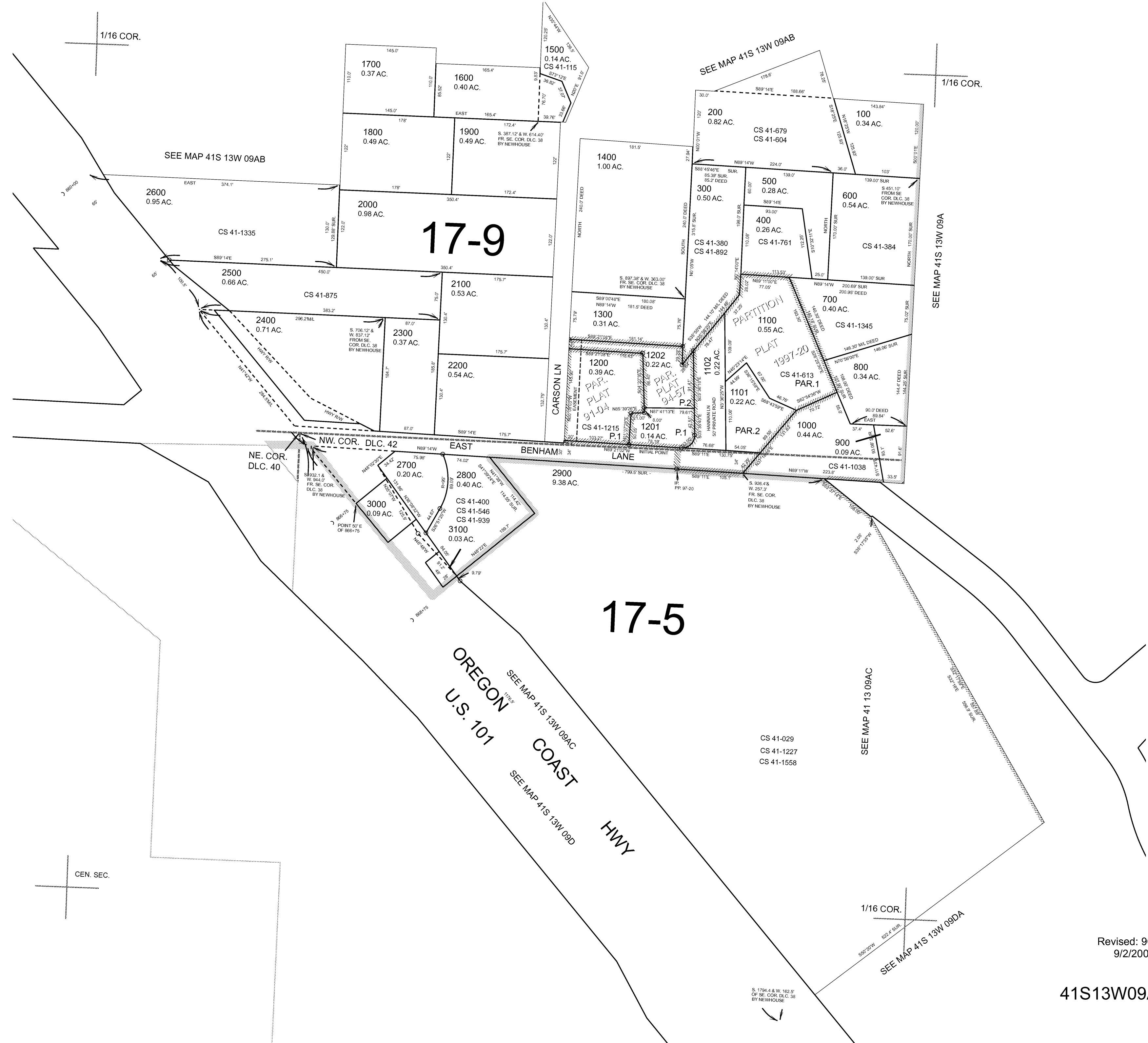


S.W.1/4 N.E.1/4 SEC.9 T.41S. R.13W. W.M. CURRY COUNTY

1" = 100'

41S13W09AC

CANCELLED: 3200



CEN. SEC.

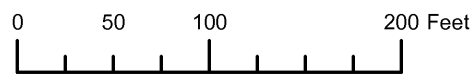
1/16 COR.

SEE MAP 41S 13W 09DA

Revised: 9C 9/2/2008

41S13W09AC

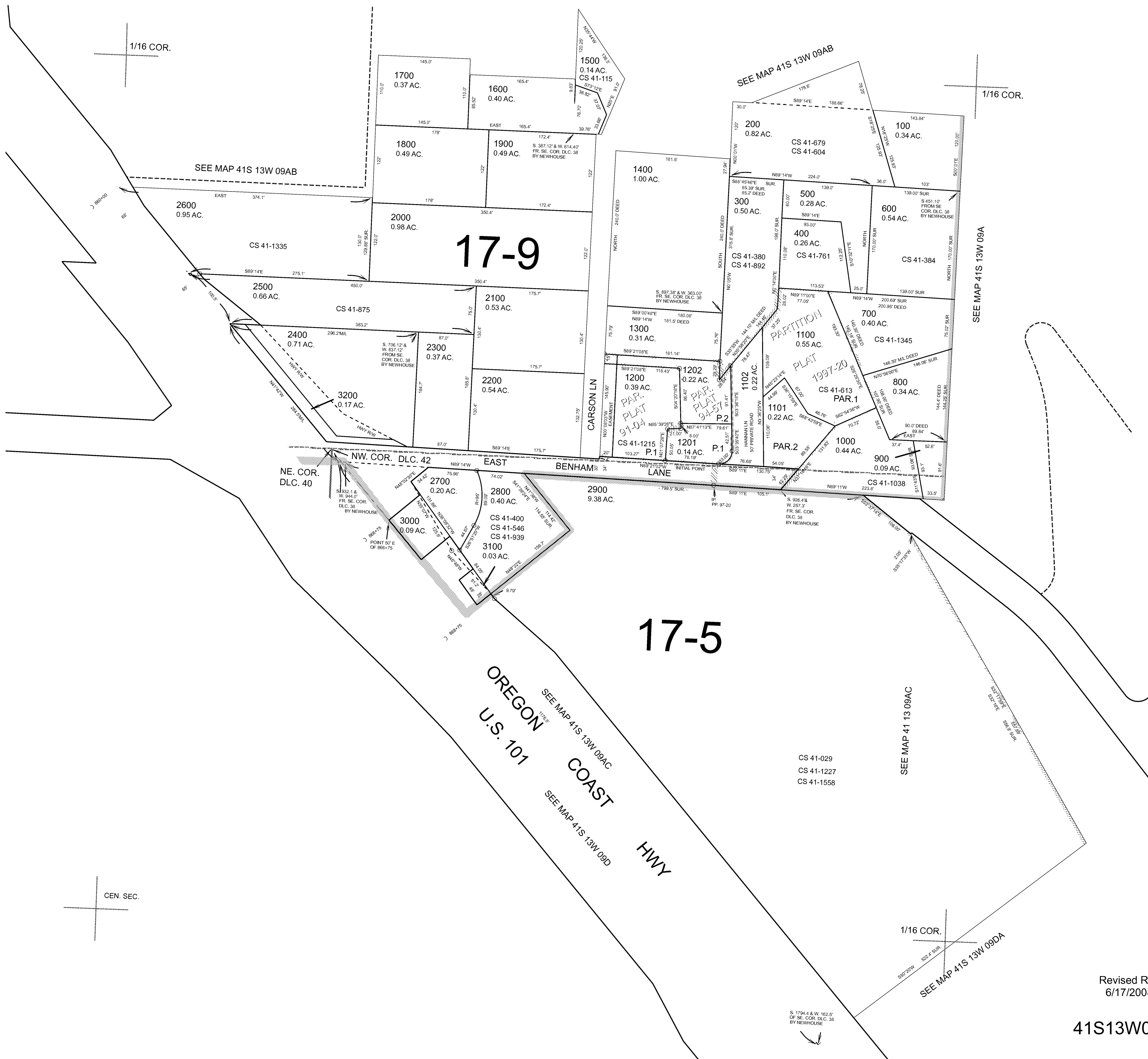
THIS MAP WAS PREPARED FOR ASSESSMENT PURPOSE ONLY



S.W.1/4 N.E.1/4 SEC.9 T.41S. R.13W. W.M. CURRY COUNTY 1" = 100'

41S13W09AC

CANCELLED:



CEN. SEC.

1/16 COR.

Revised RAA 6/17/2008

41S13W09AC

