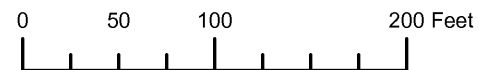


THIS MAP WAS PREPARED FOR ASSESSMENT PURPOSE ONLY



N.W. 1/4 N.W. 1/4 SEC. 8 T. 41S. R. 13W. W.M. CURRY COUNTY

1" = 100'

41S13W08BB BROOKINGS

- CANCELLED:
- 105
 - 200
 - 300
 - 301
 - 302
 - 401
 - 402
 - 903
 - 1802
 - 1999
 - 2201
 - 2302
 - 2304



Revised: RAA 3/6/2012

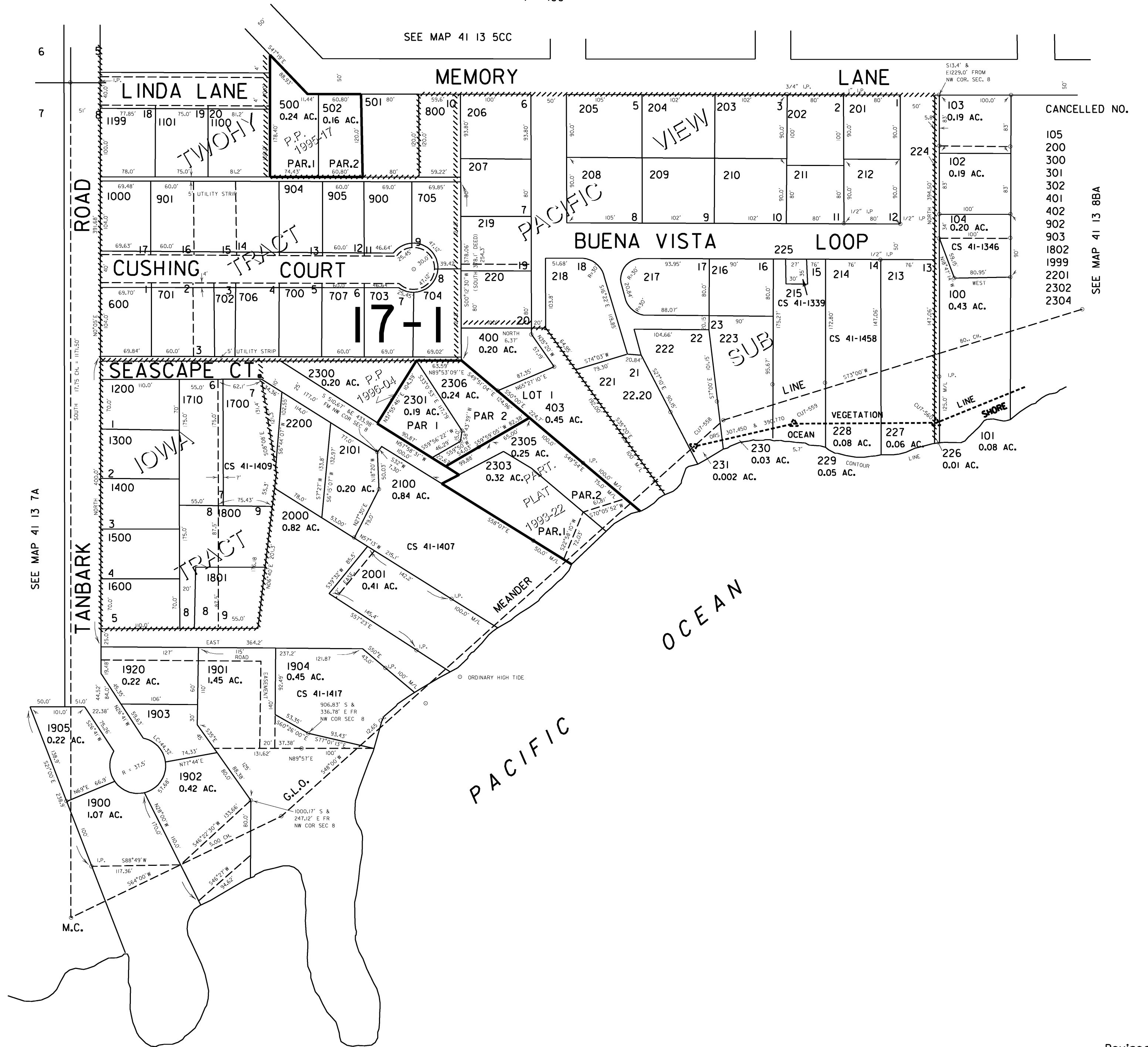
BROOKINGS 41S13W08BB

THIS MAP WAS PREPARED FOR
ASSESSMENT PURPOSE ONLY

NW1/4 NW1/4 SEC. 8 T.41S. R.13W. W.M.
CURRY COUNTY

41 13 8BB
BROOKINGS

1" = 100'



Revised
10/28/2004, DBJ
41 13 8BB
BROOKINGS