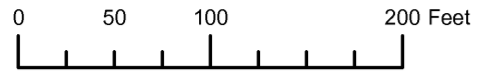


THIS MAP WAS PREPARED FOR ASSESSMENT PURPOSE ONLY

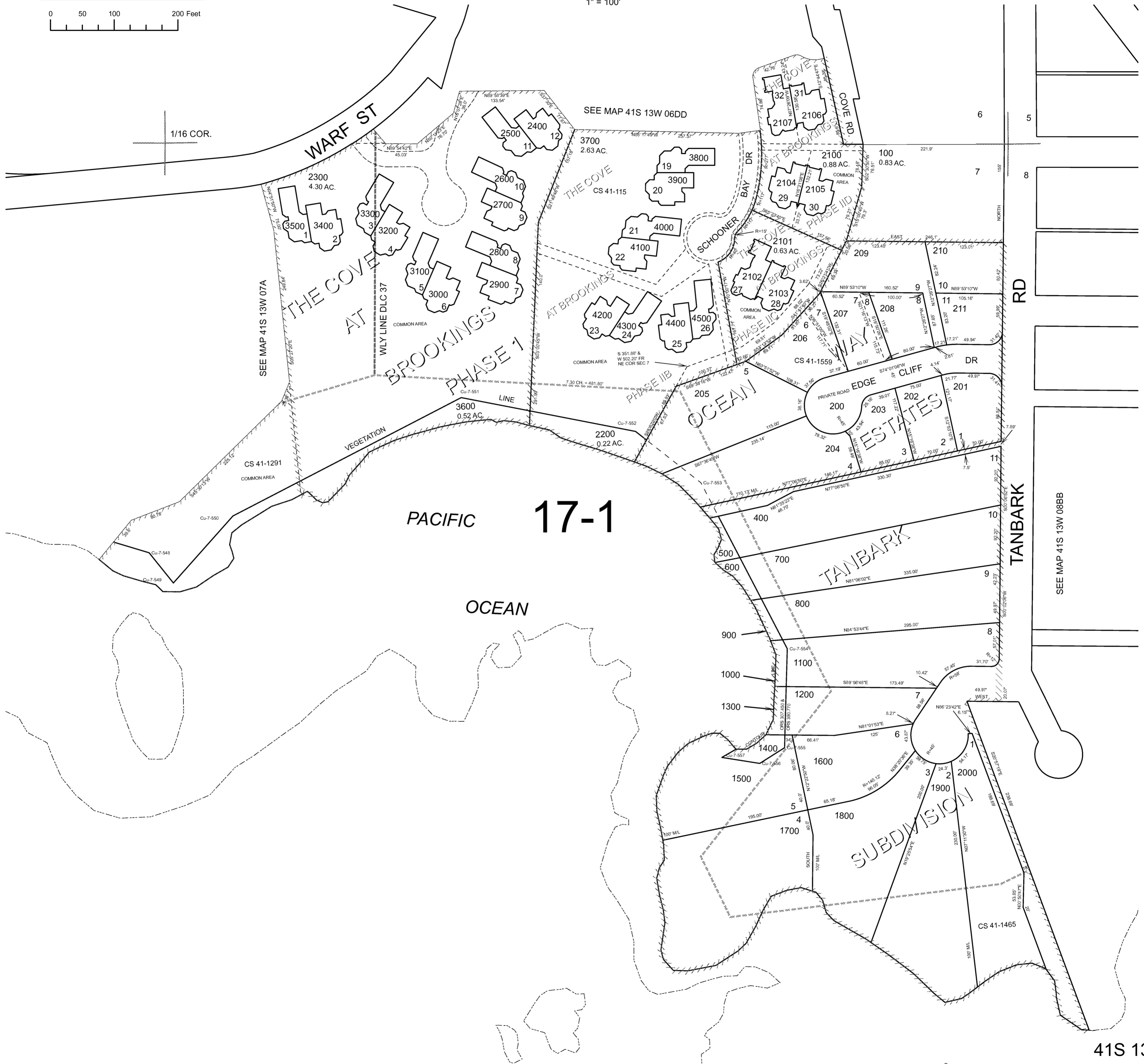


NE1/4 NE1/4 SECTION 07 T.41S. R.13W. W.M. CURRY COUNTY

1" = 100'

41S 13W 07AA

CANCELLED NO. 199 300



PACIFIC 17-1

ESTATES

SUBDIVISION

SEE MAP 41S 13W 07A

SEE MAP 41S 13W 06DD

SEE MAP 41S 13W 08BB

Revised RAA 8/22/2007

41S 13W 07AA

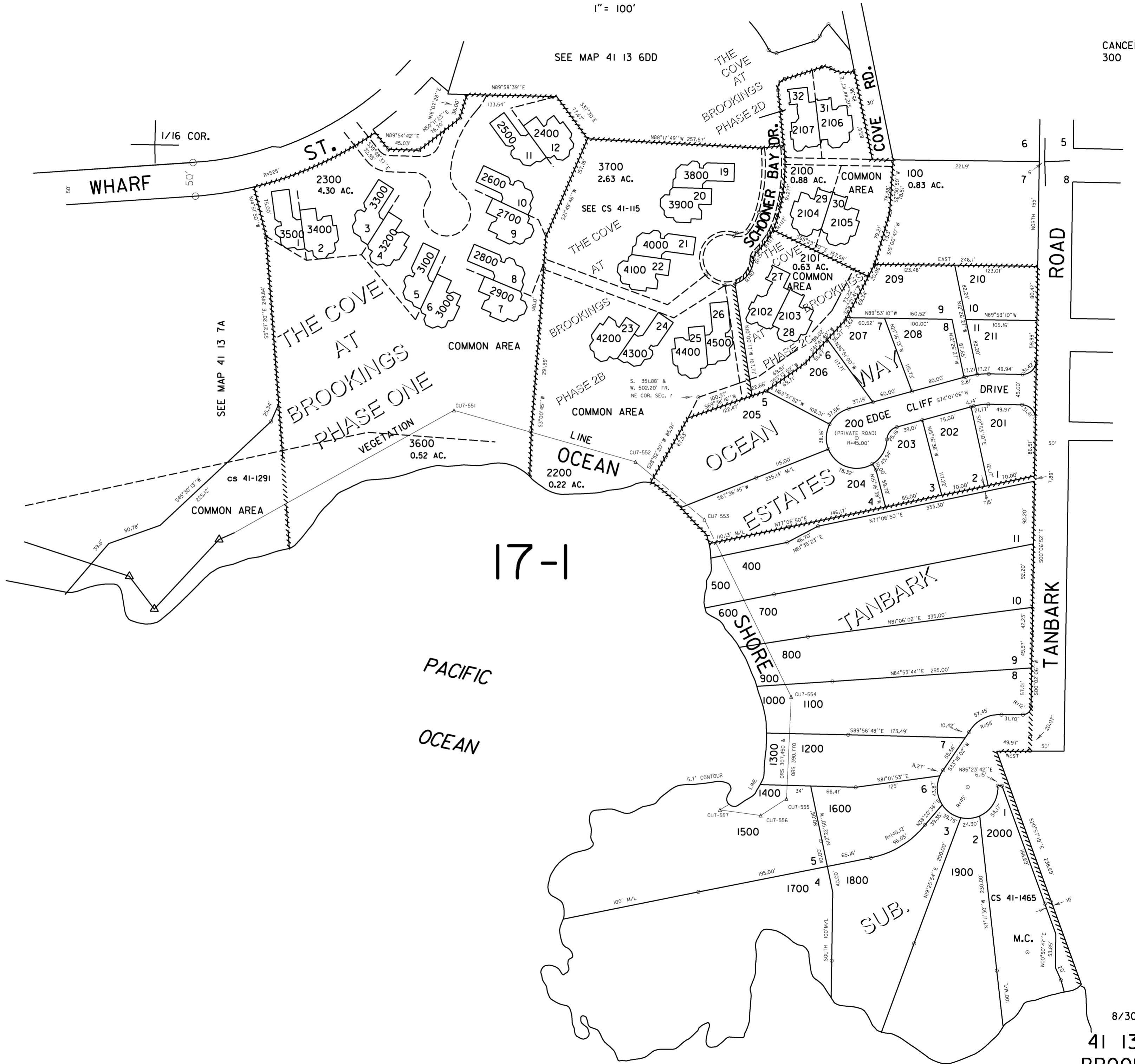
THIS MAP WAS PREPARED FOR
ASSESSMENT PURPOSE ONLY

NE1/4 NE1/4 SEC. 7 T.41S. R.13W. W.M.
CURRY COUNTY

1" = 100'

41 13 7AA
BROOKINGS

CANCELLED NO.'S
300



SEE MAP 41 13 8BB

Revised
8/30/2005, 9C

41 13 7AA
BROOKINGS