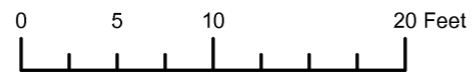


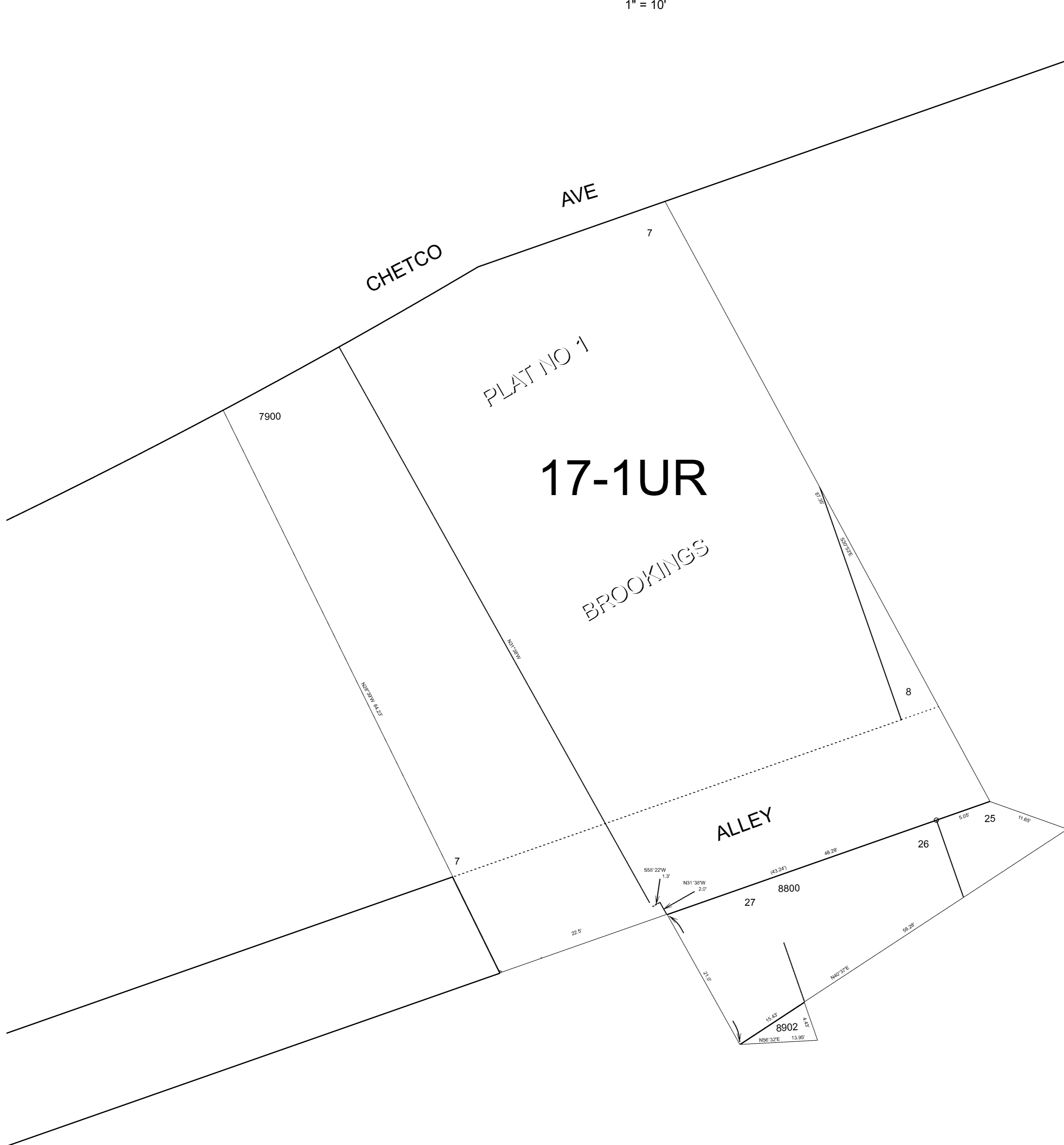
THIS MAP WAS PREPARED FOR ASSESSMENT PURPOSE ONLY



DETAIL MAP NO. 2  
N.E.1/4 S.E.1/4 SEC.6 T.41S. R.13W. W.M.  
CURRY COUNTY  
1" = 10'

41S13W06DA  
DETAIL MAP NO 2  
BROOKINGS

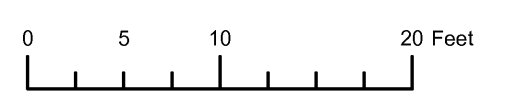
CANCELLED:



Revised 9C  
8/13/2008

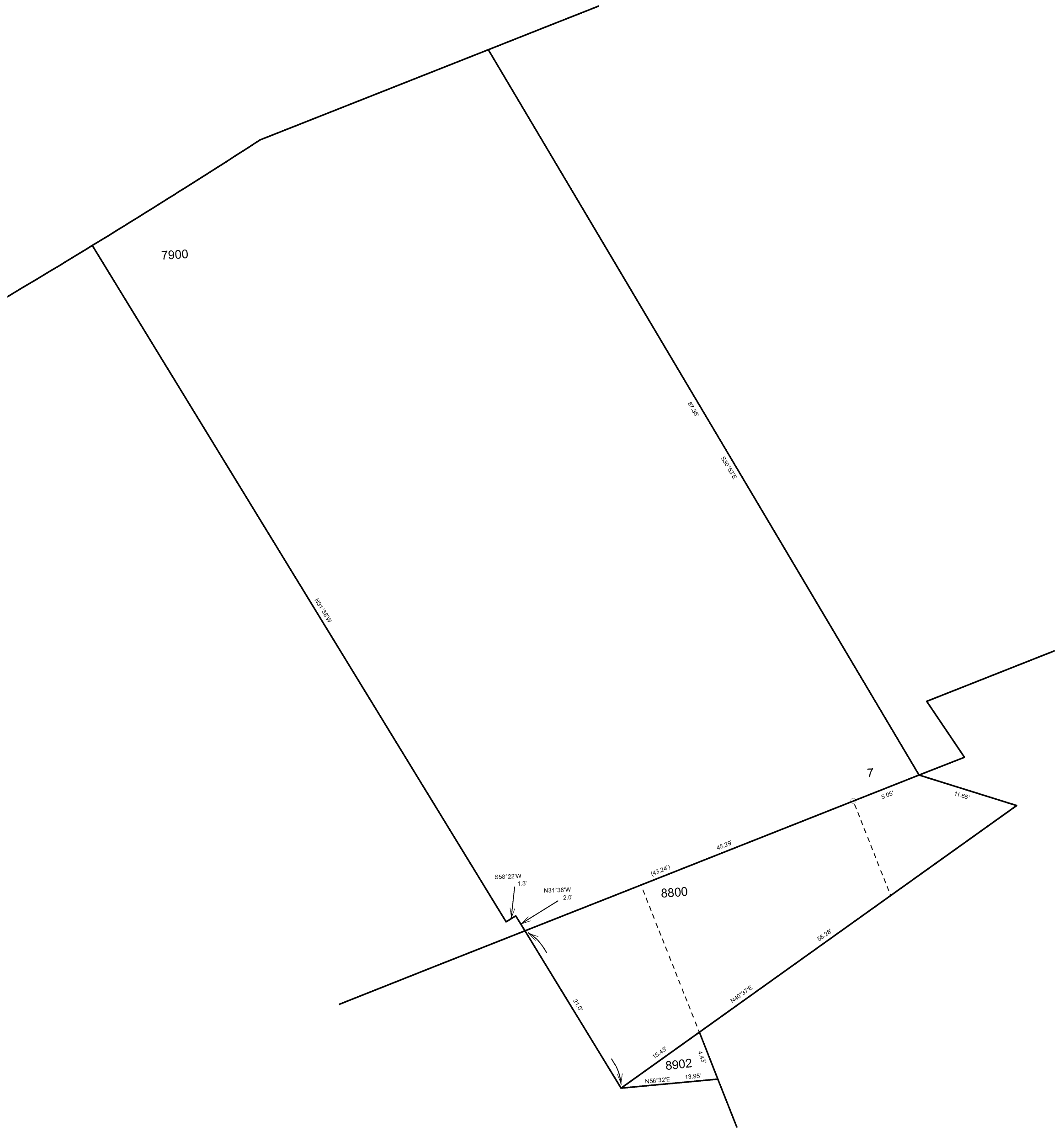
BROOKINGS  
DETAIL MAP NO 2  
41S13W06DA

THIS MAP WAS PREPARED FOR  
ASSESSMENT PURPOSE ONLY



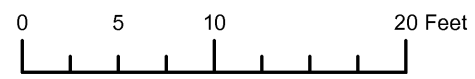
DETAIL MAP NO.2  
NE1/4 SE1/4 SEC.6 T.41S. R.13W. W.M.  
CURRY COUNTY  
1" = 10'

41S 13W 06DA  
DETAIL MAP NO.2  
BROOKINGS



Revised RAA  
9/29/2005  
41S 13W 06DA  
DETAIL MAP NO.2  
BROOKINGS

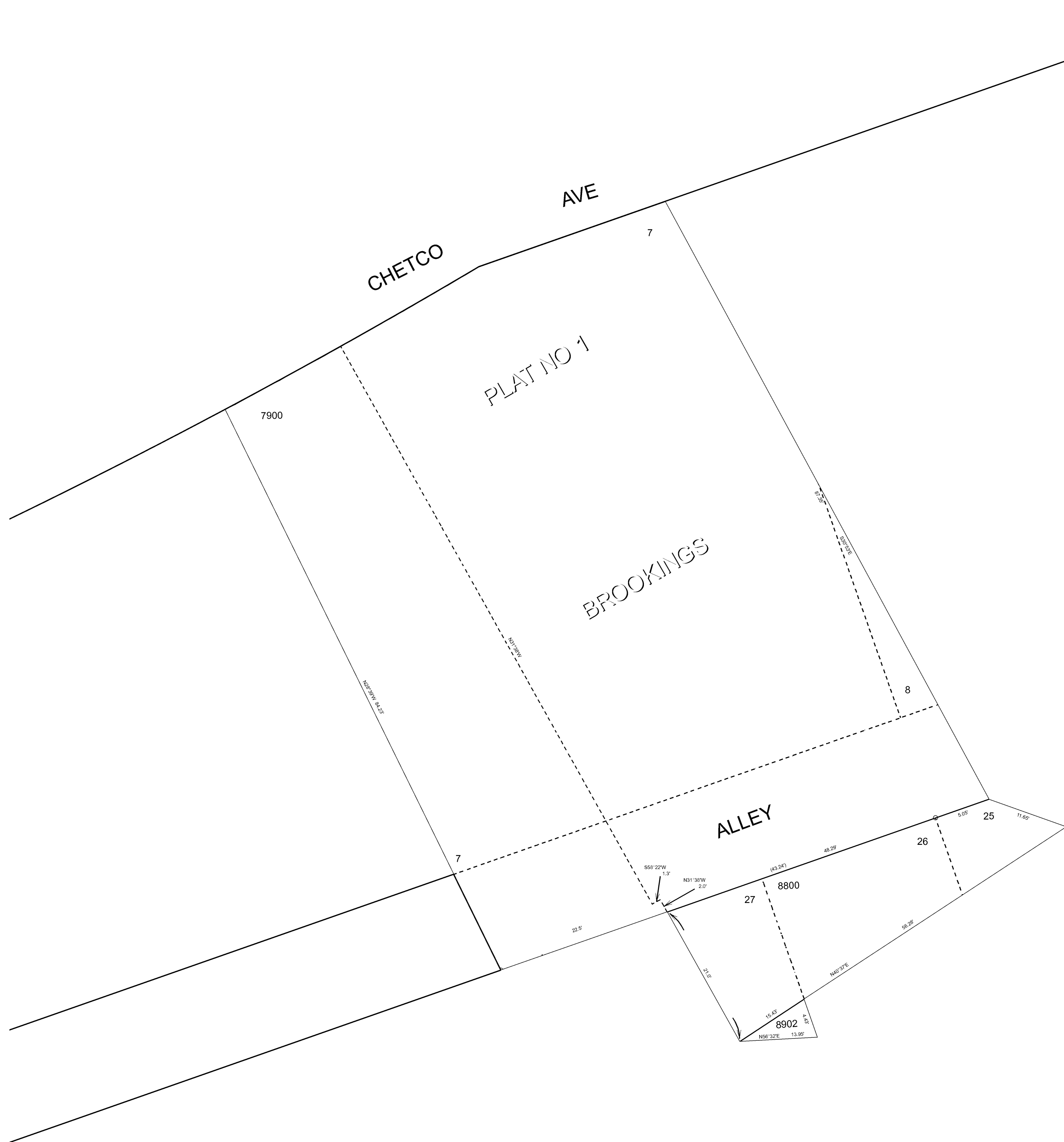
THIS MAP WAS PREPARED FOR ASSESSMENT PURPOSE ONLY



DETAIL MAP NO. 2  
N.E. 1/4 S.E. 1/4 SEC. 6 T. 41S. R. 13W. W.M.  
CURRY COUNTY  
1" = 10'

41S13W06DA  
DETAIL MAP NO 2  
BROOKINGS

CANCELLED:



Revised 9C  
8/13/2008  
BROOKINGS  
DETAIL MAP NO 2  
41S13W06DA