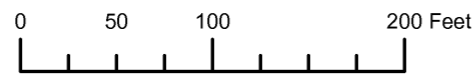


THIS MAP WAS PREPARED FOR ASSESSMENT PURPOSE ONLY

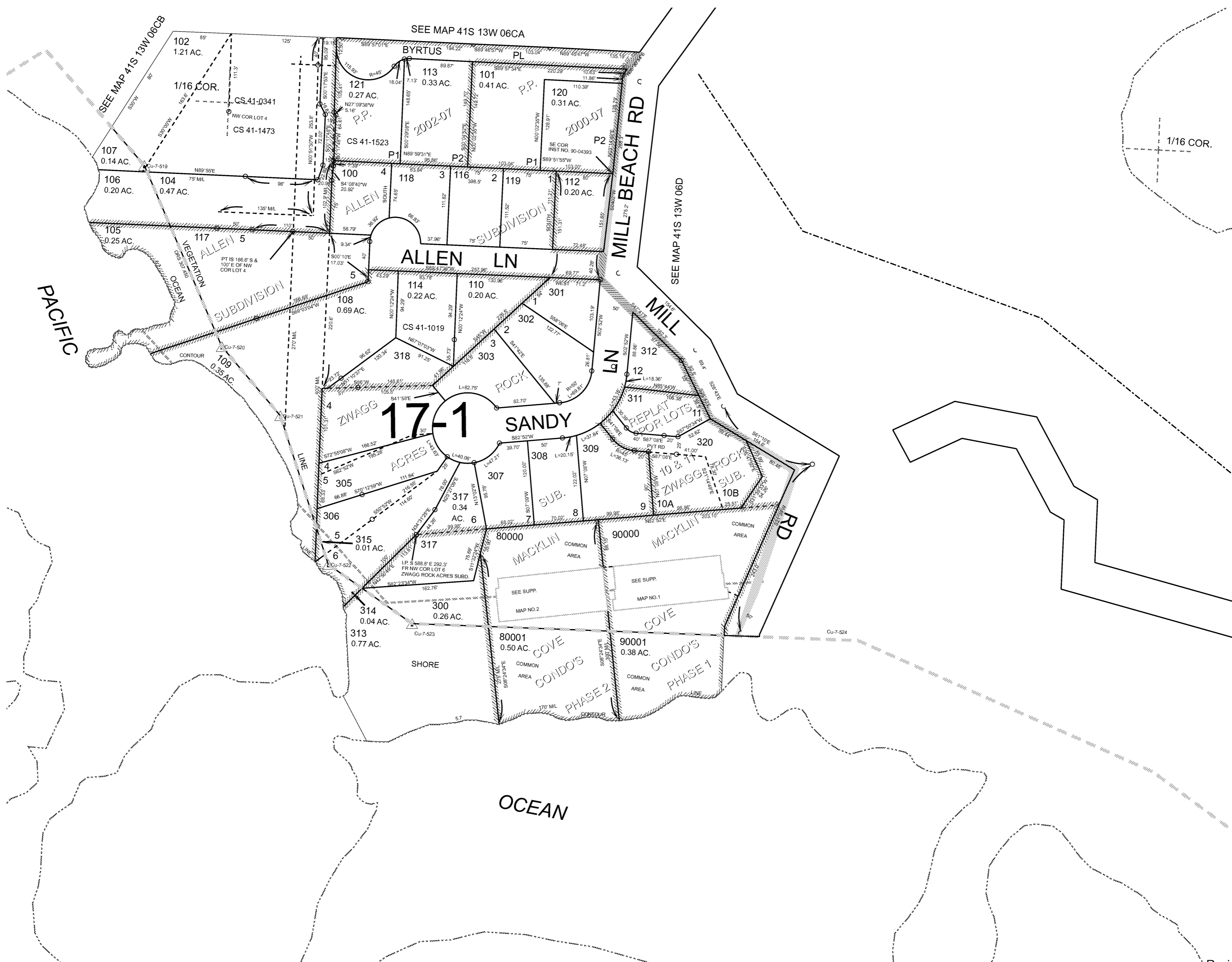


S.E.1/4 S.W.1/4 SEC.6 T.41S. R.13W. W.M. CURRY COUNTY

1" = 100'

41S13W06CD BROOKINGS

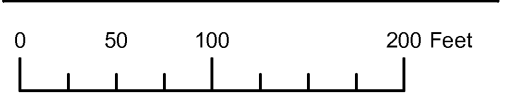
- CANCELLED:
- 103
- 111
- 115
- 200
- 304
- 310
- 316
- 319
- 321 THRU 324



Revised: RAA 10/6/2009

BROOKINGS 41S13W06CD

THIS MAP WAS PREPARED FOR ASSESSMENT PURPOSE ONLY

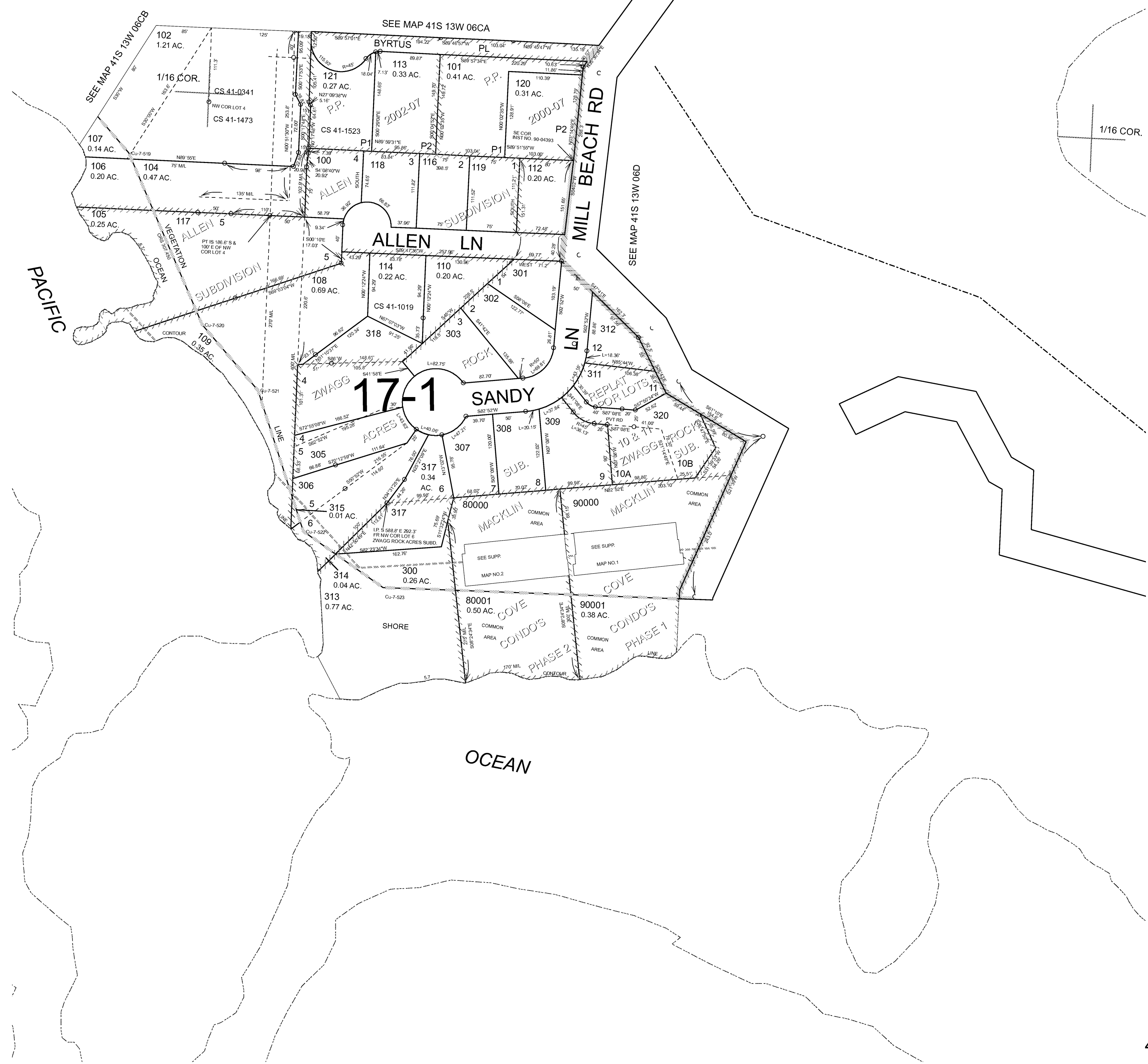


SE1/4 SW1/4 SECTION 06 T.41S. R.13W. W.M.  
CURRY COUNTY

1" = 100'

41S 13W 06CD  
BROOKINGS

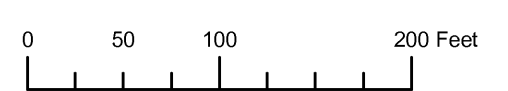
- CANCELLED NO.
- 103
- 111
- 115
- 200
- 304
- 310
- 316
- 319
- 321 THRU 324



Revised RAA  
11/6/2006

41S 13W 06CD  
BROOKINGS

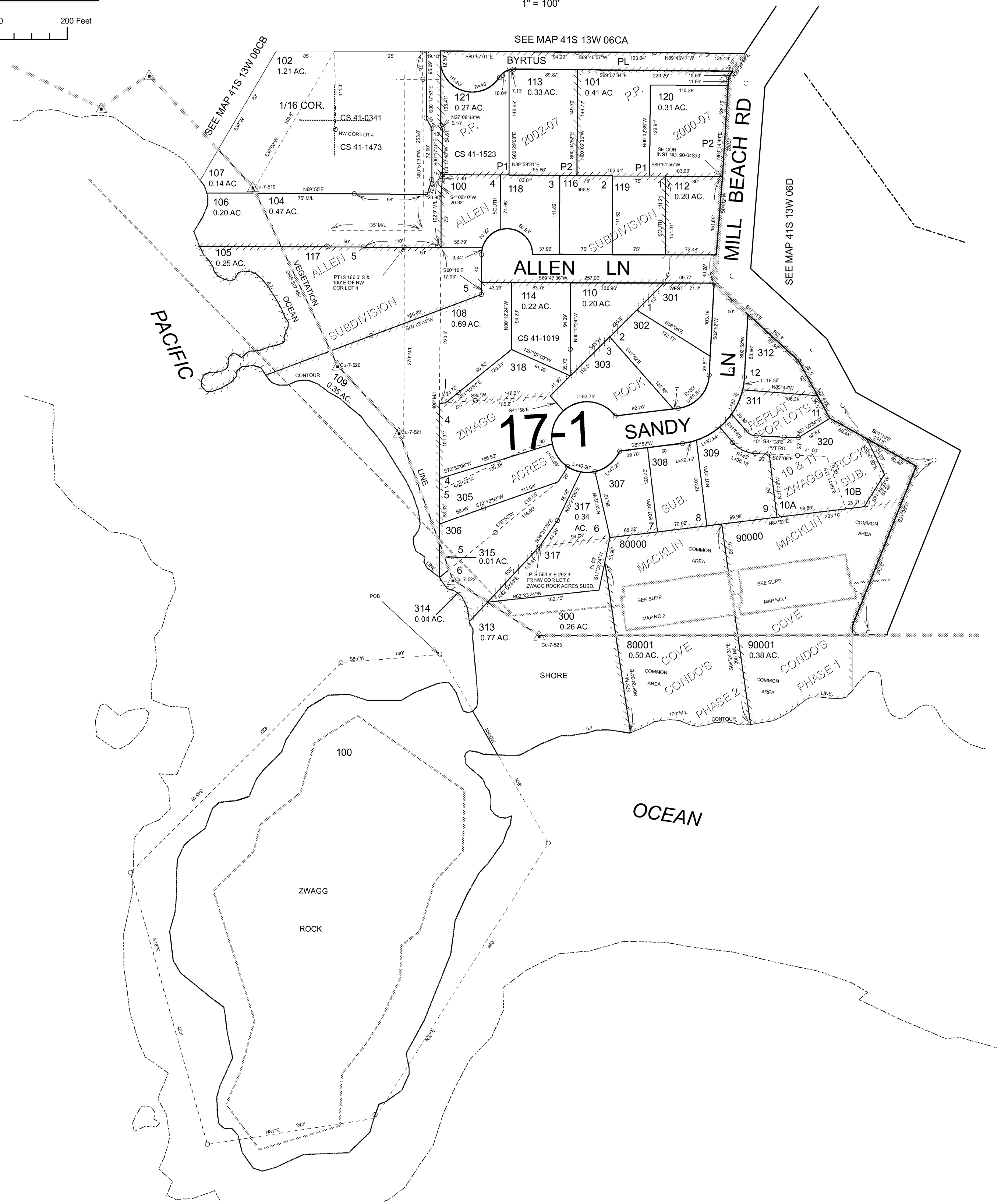
THIS MAP WAS PREPARED FOR ASSESSMENT PURPOSE ONLY



SE1/4 SW1/4 SECTION 06 T.41S. R.13W. W.M.  
 CURRY COUNTY  
 1" = 100'

41S 13W 06CD  
 BROOKINGS

- CANCELLED NO.  
 103  
 111  
 115  
 200  
 304  
 310  
 316  
 319  
 321 THRU 324



THIS MAP WAS PREPARED FOR  
ASSESSMENT PURPOSE ONLY

# SE1/4 SW1/4 SEC. 6 T.41S. R.13W. W.M. CURRY COUNTY

1" = 100'

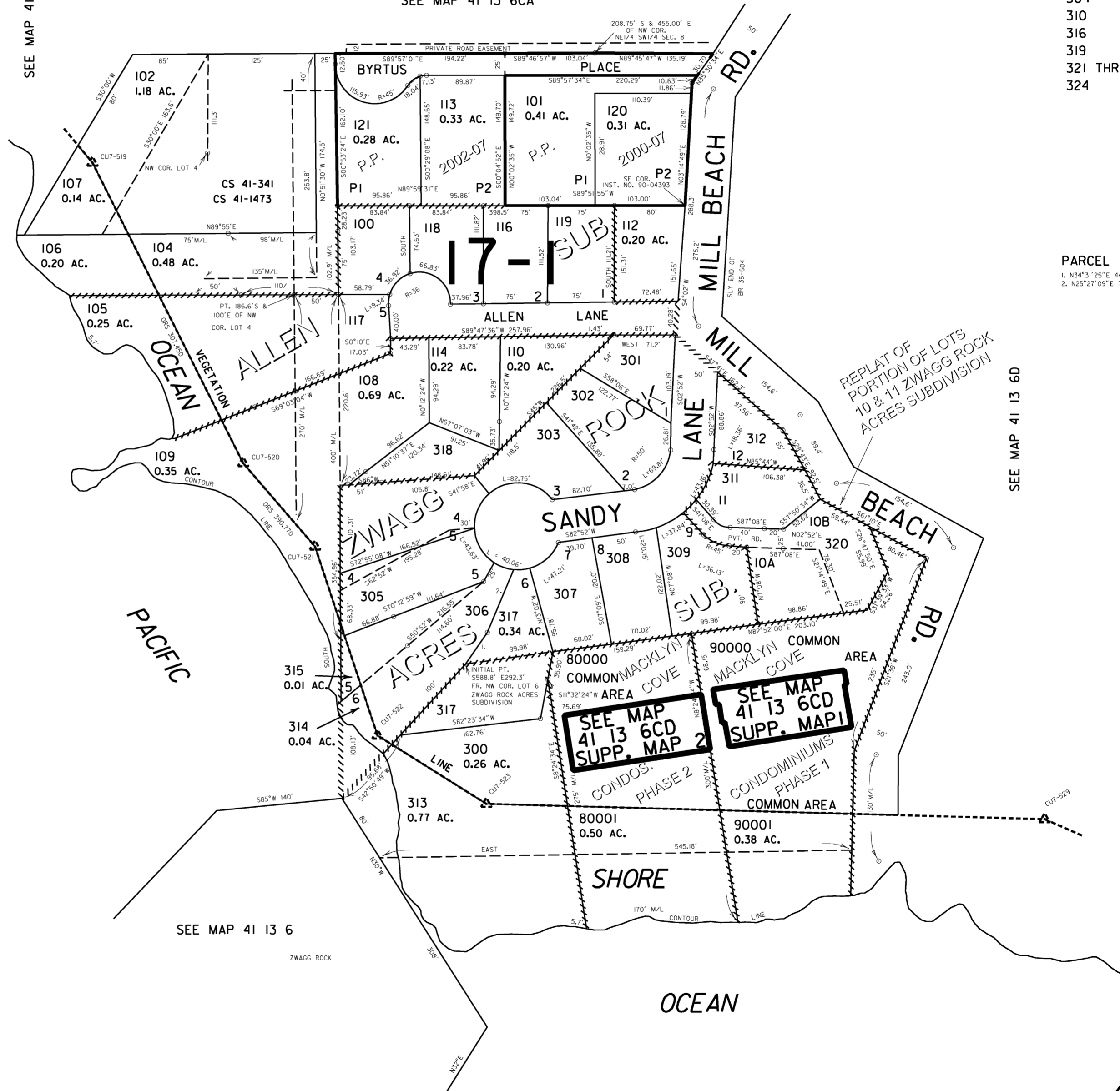
## 41 13 6CD BROOKINGS

CANCELLED NO.  
103  
111  
115  
200  
304  
310  
316  
319  
321 THRU  
324

PARCEL 317  
1. N34°31'25"E 44.26'  
2. N25°27'09"E 76.00'

SEE MAP 41 13 6CB

SEE MAP 41 13 6CA



SEE MAP 41 13 6D

SEE MAP 41 13 6

## 41 13 6CD BROOKINGS

Revised  
5/9/2005, DBJ