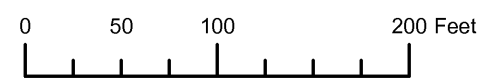


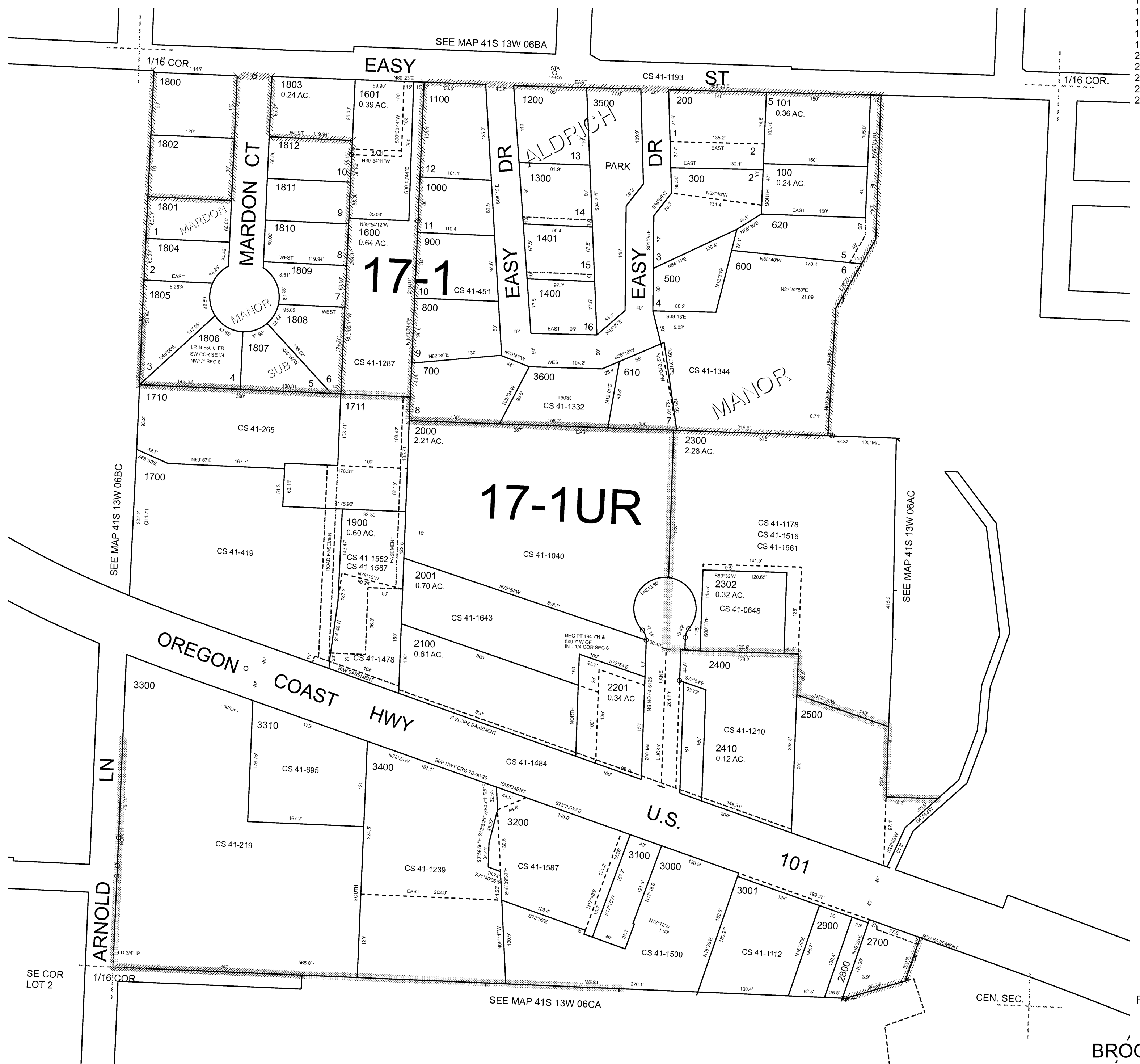
THIS MAP WAS PREPARED FOR ASSESSMENT PURPOSE ONLY



S.E. 1/4 N.W. 1/4 SEC. 6 T. 41 S. R. 13 W. W.M. CURRY COUNTY 1" = 100'

41S13W06BD BROOKINGS

- CANCELLED:
- 301
- 400
- 1500
- 1602
- 1603
- 1701
- 1900A1
- 2002
- 2101
- 2200
- 2301
- 2600

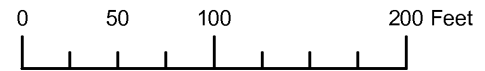


Revised: RAA 8/22/2011

BROOKINGS 41S13W06BD



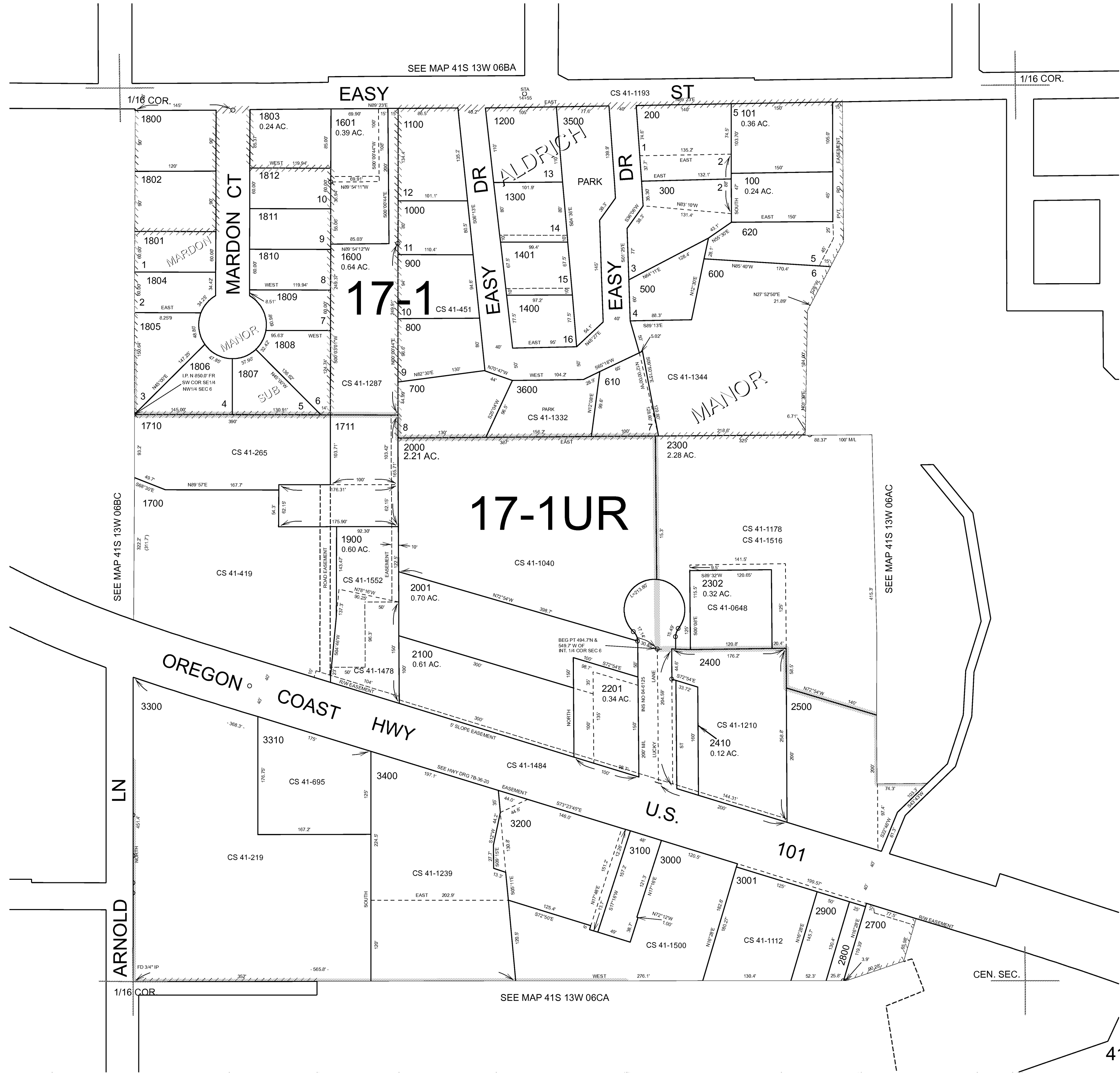
THIS MAP WAS PREPARED FOR ASSESSMENT PURPOSE ONLY



SE1/4 NW1/4 SECTION 06 T.41S. R.13W. W.M. CURRY COUNTY  
1" = 100'

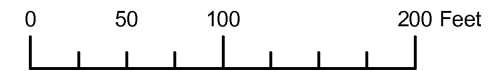
41S 13W 06BD  
BROOKINGS

- CANCELLED NO.
- 301
- 400
- 1500
- 1602
- 1603
- 1701
- 1900A1
- 2002
- 2101
- 2200
- 2301
- 2600



Revised RAA  
4/9/2007  
41S 13W 06BD  
BROOKINGS

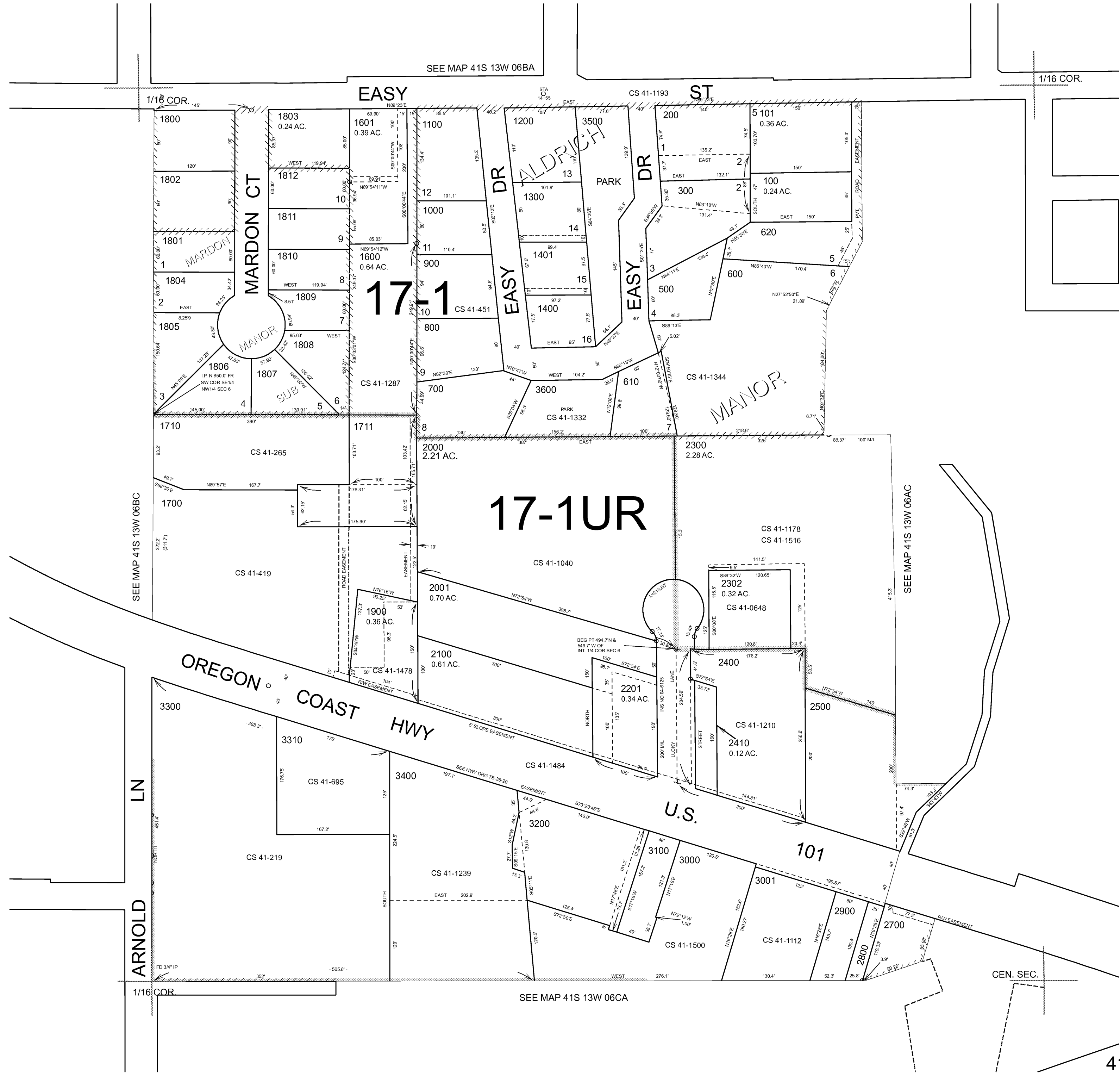
THIS MAP WAS PREPARED FOR ASSESSMENT PURPOSE ONLY



SE1/4 NW1/4 SECTION 06 T.41S. R.13W. W.M. CURRY COUNTY  
1" = 100'

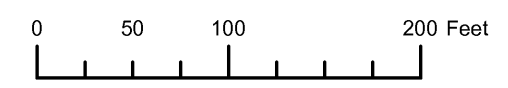
41S 13W 06BD  
BROOKINGS

- CANCELLED NO.
- 301
- 400
- 1500
- 1602
- 1603
- 1701
- 1900A1
- 2002
- 2101
- 2200
- 2301
- 2600



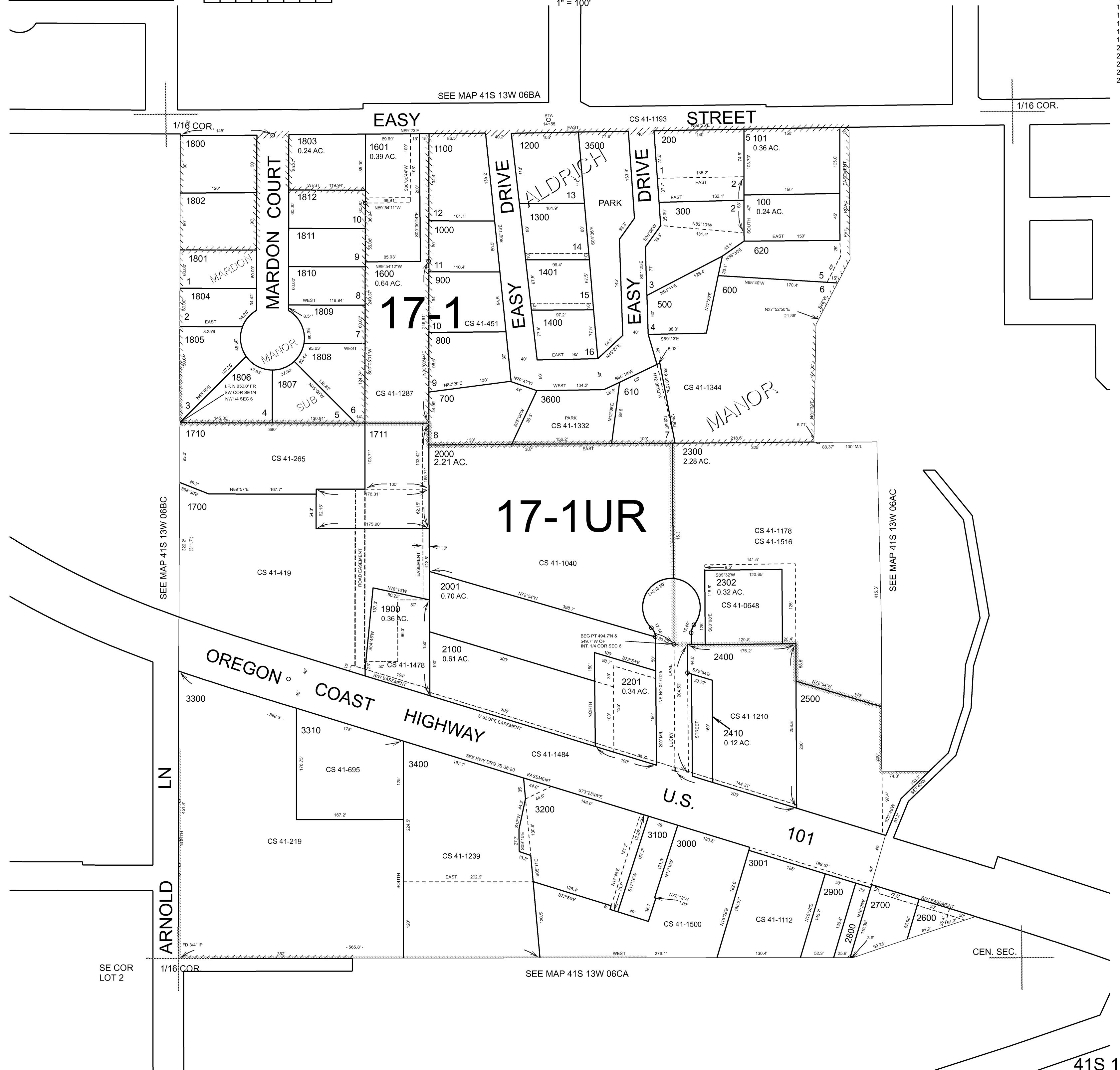
Revised RAA  
6/22/2006  
41S 13W 06BD  
BROOKINGS

THIS MAP WAS PREPARED FOR ASSESSMENT PURPOSE ONLY



SE1/4 NW1/4 SECTION 06 T.41S. R.13W. W.M. CURRY COUNTY

41S 13W 06BD  
CANCELLED NO.  
301  
400  
1500  
1602  
1603  
1701  
1900A1  
2002  
2101  
2200  
2301  
2600



SE COR LOT 2

SEE MAP 41S 13W 06CA

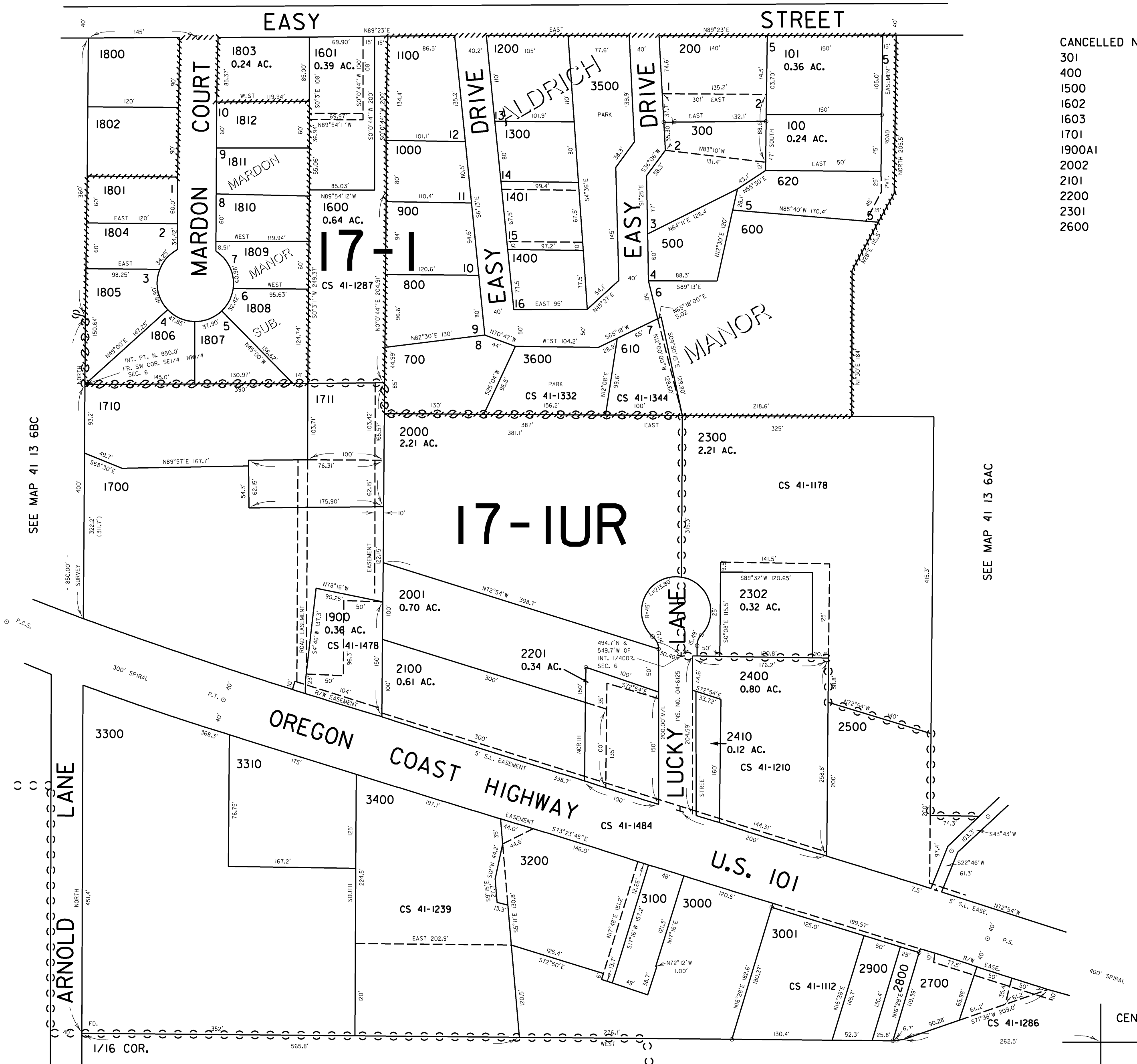
THIS MAP WAS PREPARED FOR  
ASSESSMENT PURPOSE ONLY

SE1/4 NW1/4 SEC. 6 T.41S. R.13W. W.M.  
CURRY COUNTY

41 13 6BD  
BROOKINGS

1" = 100'

SEE MAP 41 13 6BA



- CANCELLED NO.  
301  
400  
1500  
1602  
1603  
1701  
1900AI  
2002  
2101  
2200  
2301  
2600

17-IUR

Revised  
9/1/2005, DBJ  
41 13 6BD  
BROOKINGS