

THIS MAP WAS PREPARED FOR ASSESSMENT PURPOSE ONLY

SUPPLEMENTAL MAP NO. 3
 NW1/4 NW1/4 SECTION 06 T.41S. R.13W. W.M.
 CURRY COUNTY

41S 13W 06BB
 SUPPLEMENTAL MAP NO. 3
 BROOKINGS

1" = 20'

PLAT NUMBER 2006-40

INSTRUMENT NO. 2006-5203

FIR TREE ESTATES CONDOMINIUM

FOR
 SHIRLEY ANN STEEL BEAMAN
 P.O. BOX 508
 BROOKINGS, OR 97415
 541-661-0920

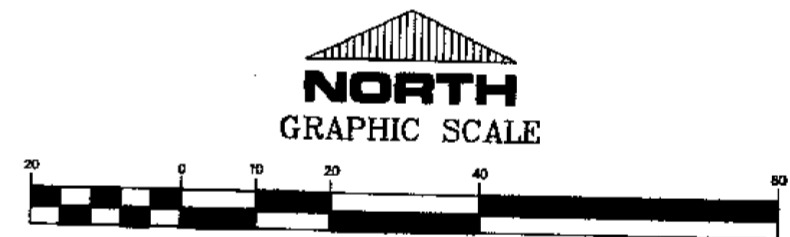
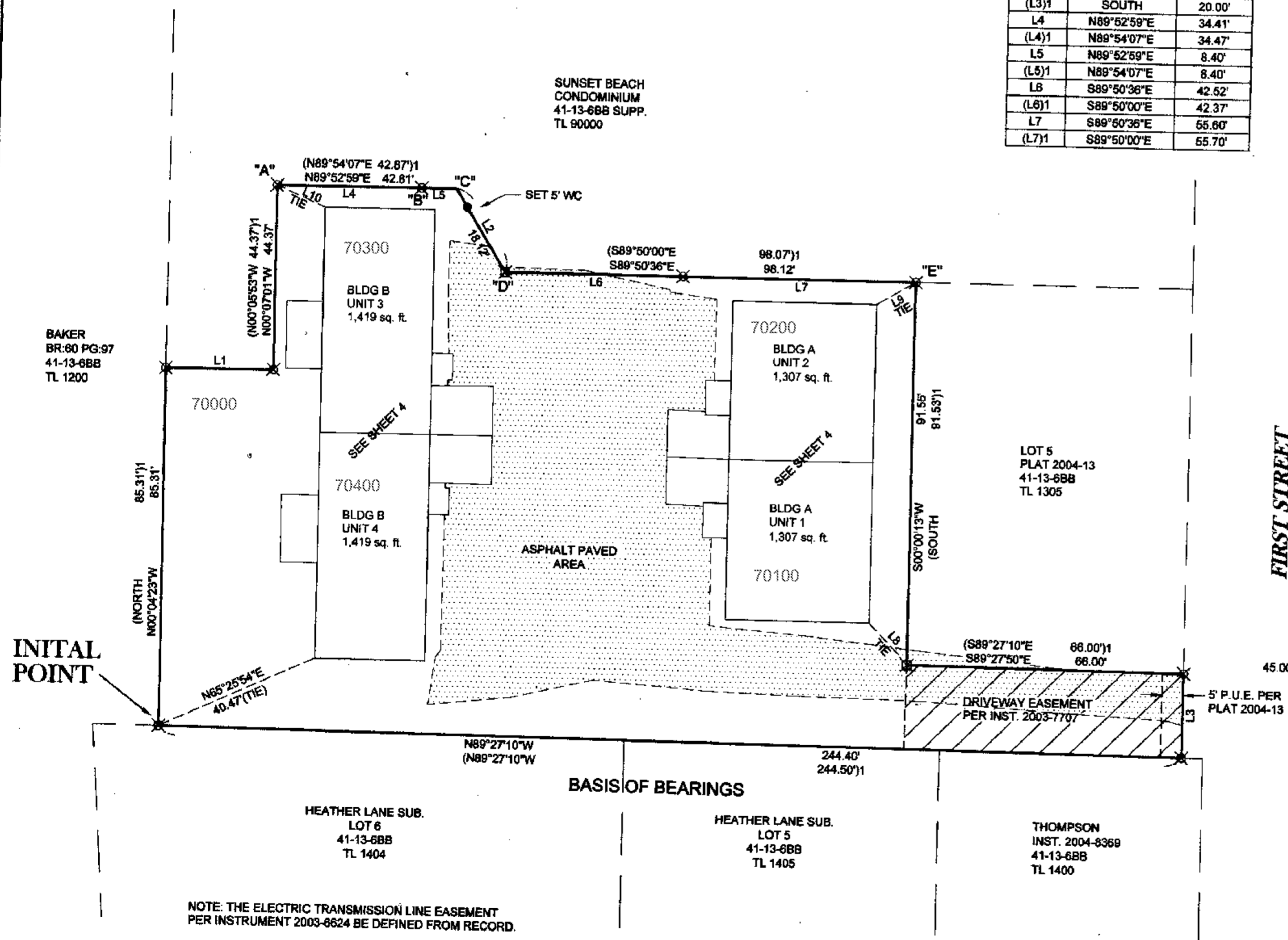
LOCATED IN
 GOVERNMENT LOT 1, SECTION 6
 TOWNSHIP 41 SOUTH, RANGE 13 WEST,
 WILLAMETTE MERIDIAN, CITY OF BROOKINGS,
 CURRY COUNTY, OREGON

BUILDING TIE LINE TABLE		
LINE	BEARING	LENGTH
L8	N44°05'02"W	13.69'
L9	S59°35'37"W	10.84'
L10	N66°28'40"W	12.53'

LINE TABLE		
LINE	BEARING	LENGTH
L1	N89°52'59"E	25.86'
(L1)1	N89°54'07"E	25.80'
L2	S31°26'36"E	23.12'
(L2)1	S31°26'00"E	23.07'
L3	S00°08'50"W	20.00'
(L3)1	SOUTH	20.00'
L4	N89°52'59"E	34.41'
(L4)1	N89°54'07"E	34.47'
L5	N89°52'59"E	8.40'
(L5)1	N89°54'07"E	8.40'
L6	S89°50'36"E	42.52'
(L6)1	S89°50'00"E	42.37'
L7	S89°50'36"E	55.60'
(L7)1	S89°50'00"E	55.70'

- LEGEND**
- SET 5/8" X 30" IRON REBAR WITH YELLOW PLASTIC CAP STAMPED "ROBERTS PLS 2730".
 - ⊗ FOUND MAG NAIL W/BRASS WASHER STAMPED "STUNTZNER ENG." PER GARCIA SUBDIVISION (PLAT 2004-13).
 - ⊗ FOUND 5/8" REBAR W/PLASTIC CAP STAMPED "STUNTZNER ENG." PER GARCIA SUBDIVISION (PLAT 2004-13).
 - (1) RECORD PER GARCIA SUBDIVISION (PLAT 2004-13).
 - WC WITNESS CORNER

SUNSET BEACH CONDOMINIUM
 41-13-68B SUPP.
 TL 90000



REGISTERED PROFESSIONAL LAND SURVEYOR
 OREGON JULY 25, 1985
 RICHARD P. ROBERTS
 2730
 EXPIRES 12/31/06

I HEREBY CERTIFY THAT THIS IS A TRUE AND EXACT COPY OF THE ORIGINAL.
 RICHARD P. ROBERTS, PLS 2730

Roberts & Associates
 Land Surveying Inc.
 English Village Ctr. Ph: 541-469-0142
 15957 Hwy 101 S. #11 Fax: 541-469-5456
 P.O. Box 2791 Harbor, OR 97415

Drawn By: CEF	Date: 7/31/06
Checked By: RPR	Job No. 05-066
Drawing Name: BASE	Sheet 2 of 4
Project Folder: 05-066	