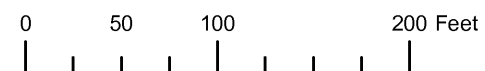




THIS MAP WAS PREPARED FOR ASSESSMENT PURPOSE ONLY



NW1/4 NW1/4 SECTION 06 T.41S. R.13W. W.M. CURRY COUNTY

1" = 100'

41S 13W 06BB BROOKINGS

- CANCELLED NO.
- 205
- 512
- 517
- 700
- 1301 THRU 1304
- 1401
- 1410
- 1500 THRU 1514
- 2701
- 2800
- 3100
- 3300
- 3402
- 3601 THRU 3604



1/16 COR.

SEE MAP 41S 13W 06BA

SEE MAP 41S 14W 01AA

SEE MAP 40S 13W 31C

SEE MAP 41S 13W 06BB SUPP. NO.1

SEE MAP 41S 13W 06BB SUPP. NO.2

17-1

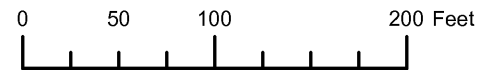
1/16 COR.

SEE MAP 41S 13W 06BC

Revised RAA 1/4/2007

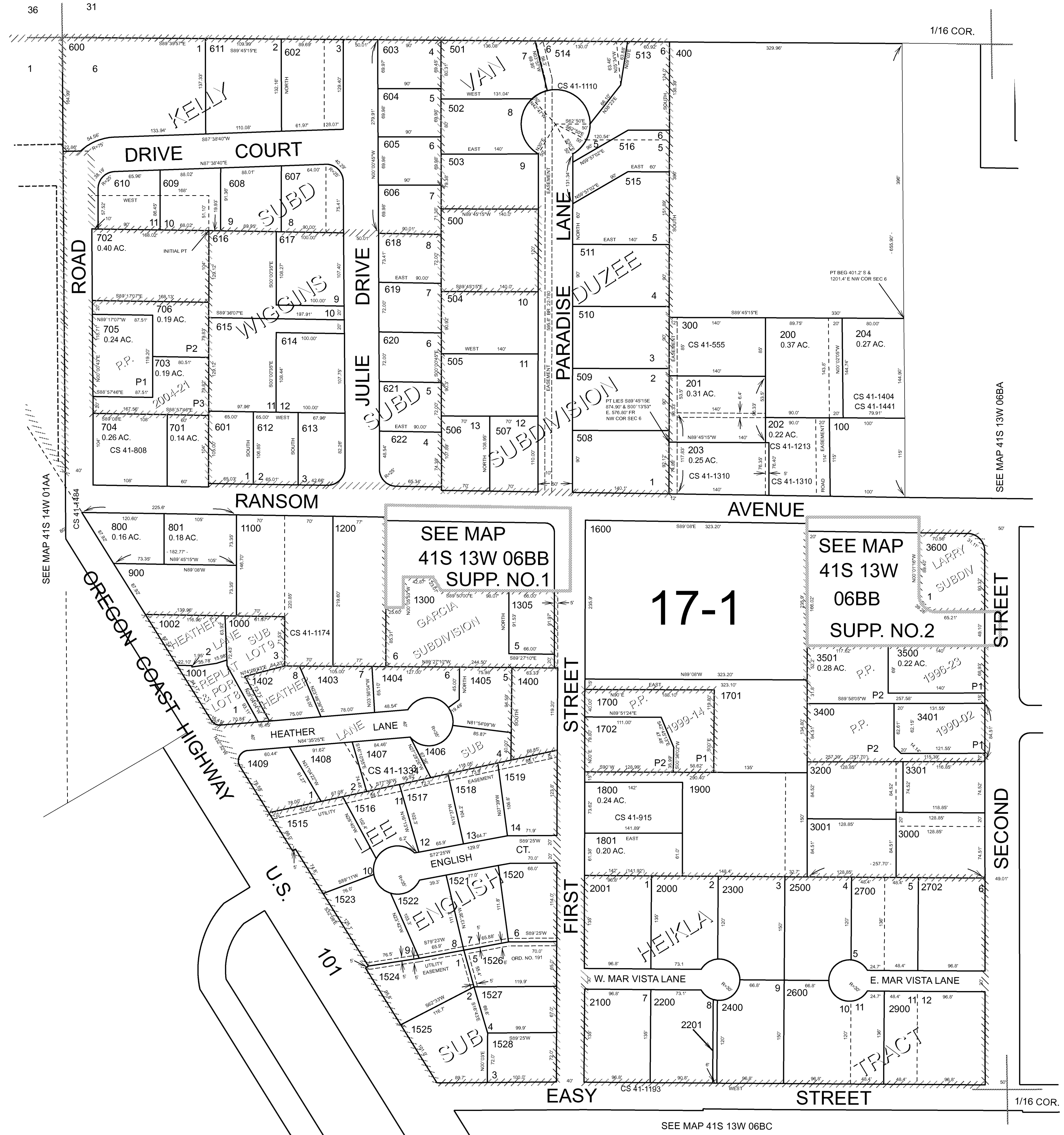
41S 13W 06BB BROOKINGS

THIS MAP WAS PREPARED FOR ASSESSMENT PURPOSE ONLY



NW1/4 NW1/4 SECTION 06 T.41S. R.13W. W.M. CURRY COUNTY 1" = 100'

41S 13W 06BB CANCELLED NO. 205 512 517 700 1301 THRU 1304 1401 1410 1500 THRU 1514 2701 2800 3100 3300 3402 3601 THRU 3604



SEE MAP 41S 14W 01AA

SEE MAP 41S 14W 01AA

SEE MAP 41S 14W 01AA

SEE MAP 41S 14W 01AA

SEE MAP 41S 14W 01AA

SEE MAP 41S 14W 01AA

SEE MAP 41S 14W 01AA

SEE MAP 41S 13W 06BA

SEE MAP 41S 13W 06BA

SEE MAP 41S 13W 06BB SUPP. NO.1

SEE MAP 41S 13W 06BB SUPP. NO.2

17-1

SEE MAP 41S 13W 06BC

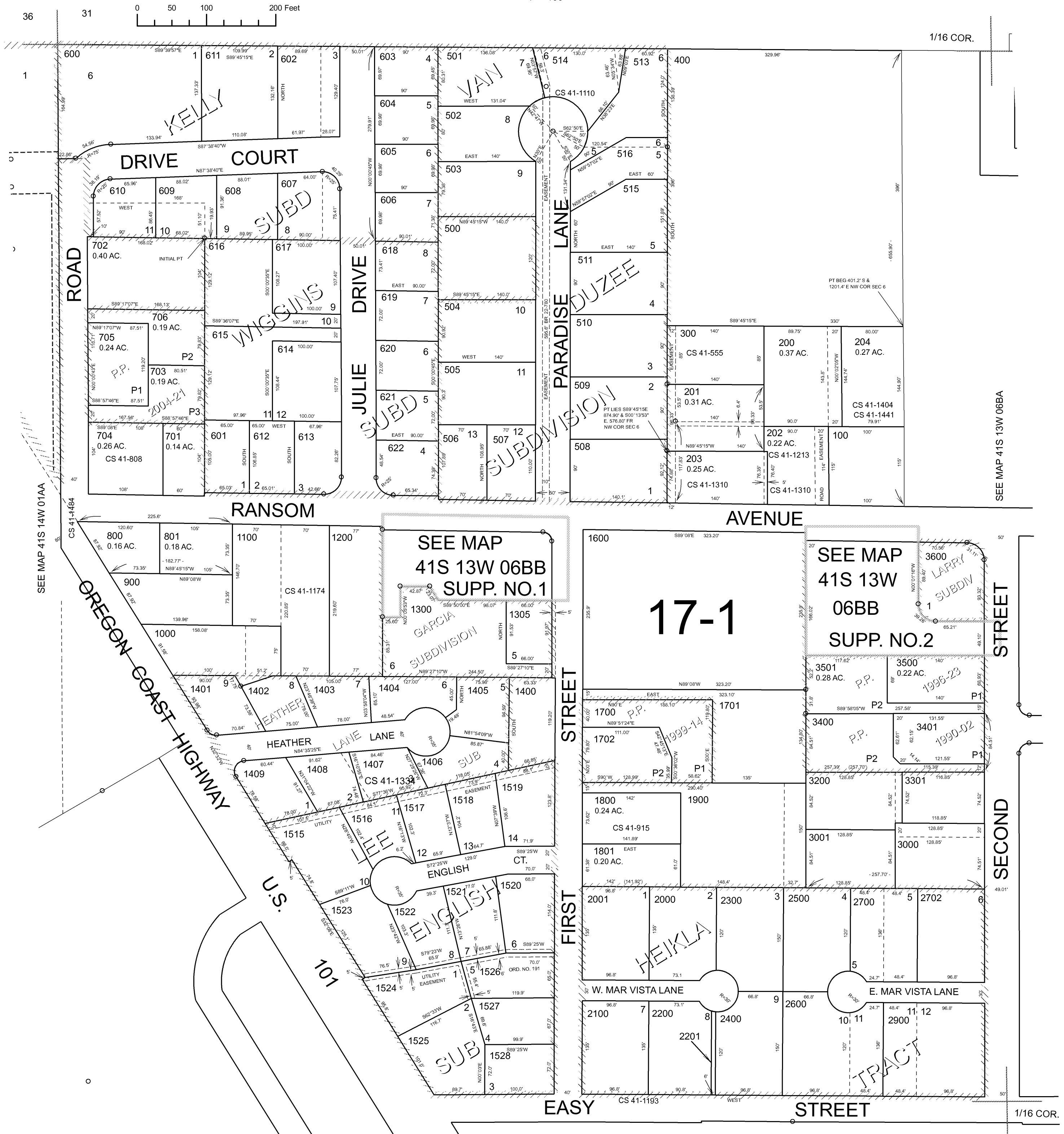
THIS MAP WAS PREPARED FOR ASSESSMENT PURPOSE ONLY

NW1/4 NW1/4 SECTION 06 T.41S. R.13W. W.M. CURRY COUNTY

1" = 100'

41S 13W 06BB

CANCELLED NO. 205 512 517 700 1301 THRU 1304 1410 1500 THRU 1514 2701 2800 3100 3300 3402 3601 THRU 3604



SEE MAP 41S 14W 01AA

SEE MAP 41S 13W 06BA

17-1

SEE MAP 41S 13W 06BC

Revised DBJ Mar 15, 2006

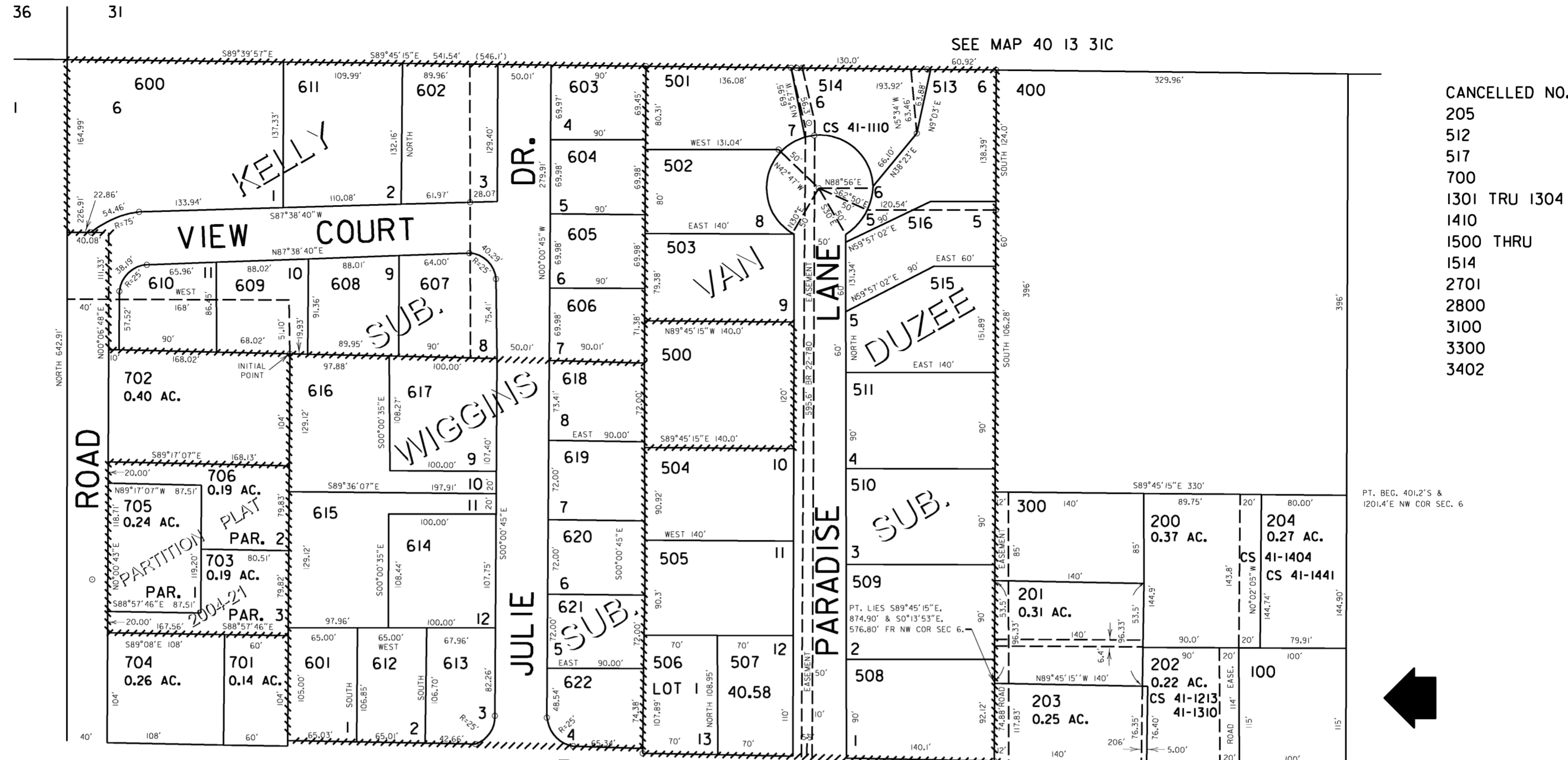
41S 13W 06BB



NW1/4 NW1/4 SEC. 6 T.41S. R.13W. W.M.  
CURRY COUNTY

41 13 6BB  
BROOKINGS

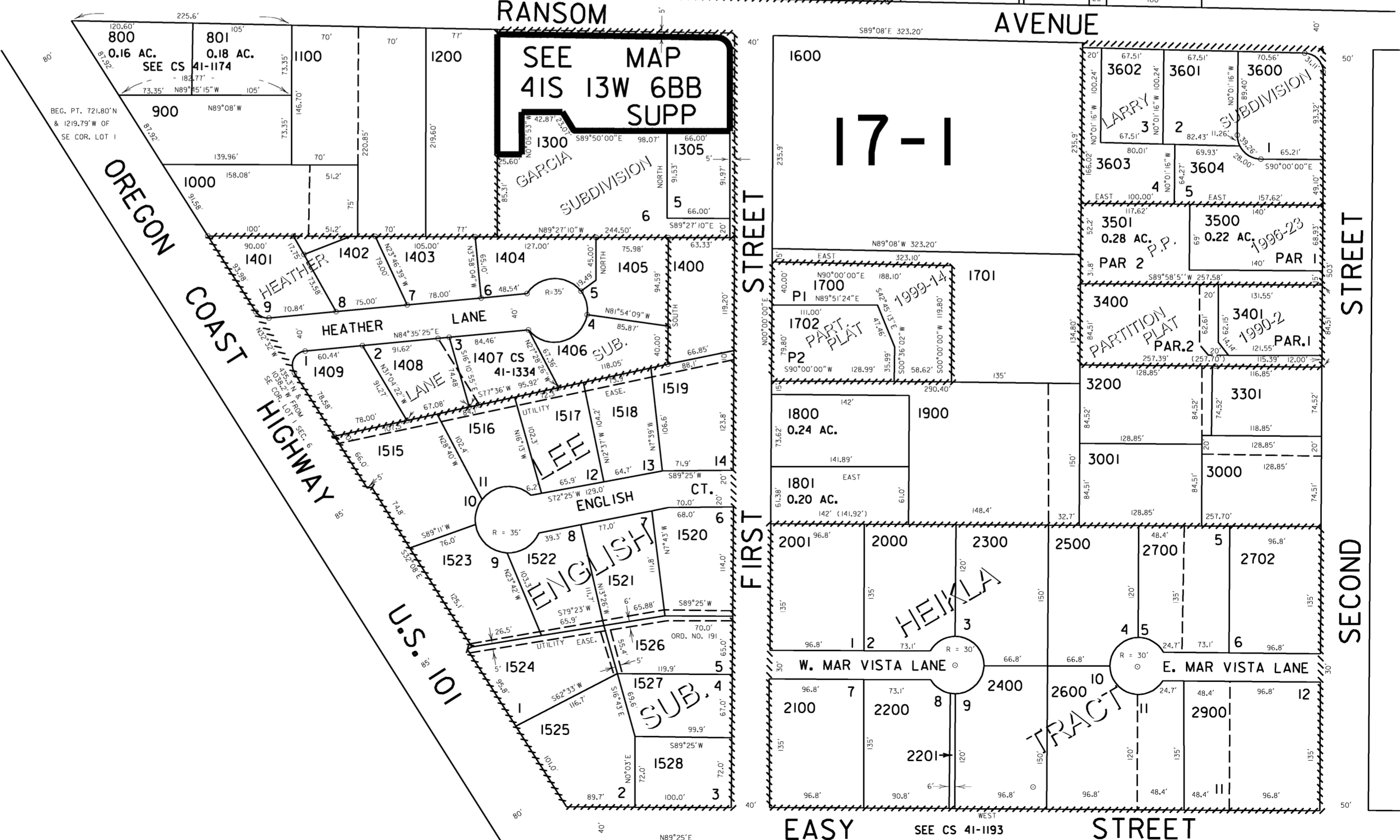
1" = 100'



- CANCELLED NO.
- 205
- 512
- 517
- 700
- 1301 TRU 1304
- 1410
- 1500 THRU
- 1514
- 2701
- 2800
- 3100
- 3300
- 3402



SEE MAP 41 14 IAA



Revised  
3/7/2005, DBJ

41 13 6BB  
BROOKINGS