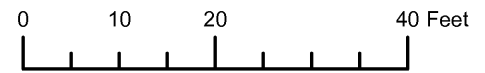


THIS MAP WAS PREPARED FOR ASSESSMENT PURPOSE ONLY



SUPPLEMENTAL MAP NO. 2  
NE 1/4 NW 1/4 SECTION 06 T.41S. R.13W. W.M.  
CURRY COUNTY  
1" = 20'

41S 13W 06BA  
SUPPLEMENTAL MAP NO. 2  
BROOKINGS

PLAT NUMBER 2007-18  
INSTRUMENT NO. 2007-3306  
KEYSTONE COURT CONDOMINIUM

PREPARED FOR:  
KURT R. KESSLER AND  
VICTORIA V.J. KESSLER  
PO BOX 6335  
BROOKINGS, OREGON 97415  
(541) 469-7853

LOCATED IN  
NE 1/4 OF NW 1/4, SECTION 6,  
T41S, R13W, WILLAMETTE MERIDIAN,  
CITY OF BROOKINGS, CURRY COUNTY, OREGON

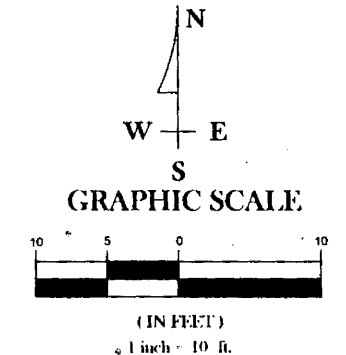
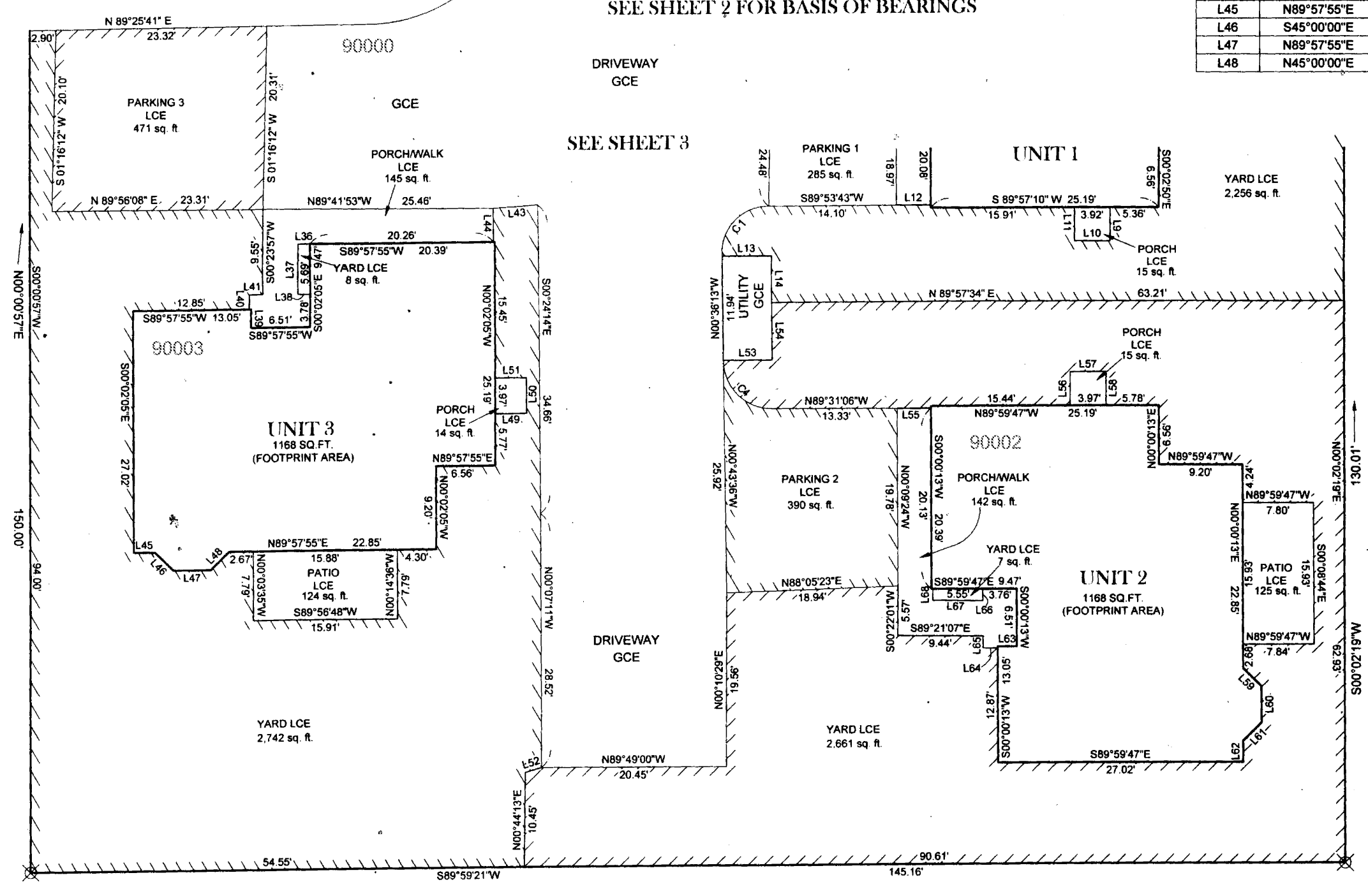
CURVE TABLE					
CURVE	DELTA	RADIUS	LENGTH	TANGENT	CHORD
C1	94°35'20"	5.17'	8.53'	5.60'	S43°12'36"W 7.59'
C4	95°29'35"	5.39'	8.98'	5.93'	S47°27'12"E 7.98'

LINE TABLE		
LINE	BEARING	LENGTH
L9	N00°02'50"W	3.77'
L10	S89°51'45"W	3.92'
L11	N00°02'50"W	3.77'
L12	N89°57'10"E	3.79'
L13	S89°48'41"E	5.43'
L14	S00°19'57"E	5.41'
L36	N89°57'55"E	1.30'
L37	S00°32'01"W	5.69'
L38	N89°57'55"E	1.35'
L39	N00°02'05"W	2.11'
L40	S00°02'05"E	1.71'
L41	S89°57'55"W	1.45'
L42	N89°55'51"E	2.11'
L43	N85°55'09"E	4.93'
L44	S00°02'05"E	3.75'
L45	N89°57'55"E	2.36'
L46	S45°00'00"E	2.89'
L47	N89°57'55"E	4.10'
L48	N45°00'00"E	2.89'

LINE TABLE		
LINE	BEARING	LENGTH
L49	S89°57'55"W	3.49'
L50	S00°06'22"W	3.97'
L51	S89°57'55"W	3.50'
L52	N73°18'16"E	1.87'
L53	S89°55'05"W	5.40'
L54	S00°30'49"E	6.50'
L55	S89°59'47"E	3.74'
L56	S00°00'13"W	3.76'
L57	N89°54'26"W	3.97'
L58	S00°00'13"W	3.75'
L59	N44°57'42"W	2.89'
L60	N00°00'13"E	4.10'
L61	N45°02'18"E	2.89'
L62	N00°00'13"E	2.36'
L63	N89°59'47"W	2.11'
L64	S89°59'47"E	1.65'
L65	N00°38'53"E	1.37'
L66	N00°00'13"E	1.34'
L67	N89°19'48"W	5.55'
L68	N00°00'13"E	1.28'

NOTE:  
AREAS NOT DESIGNATED AS LIMITED COMMON ELEMENT SHALL BE GENERAL COMMON ELEMENT

LEGEND  
 ☒ FOUND 5/8" REBAR (NO CAP) PER CS# 41-1095, 1 PLACE AN ORANGE PLASTIC CAP STAMPED "PLS 73590" ON REBAR.  
 LCE LIMITED COMMON ELEMENT  
 GCE GENERAL COMMON ELEMENT  
 SEE SHEET 2 FOR BASIS OF BEARINGS



REGISTERED PROFESSIONAL LAND SURVEYOR  
 OREGON  
 JAN. 11, 2005  
 CHRIS E. FOWLE  
 73590  
 EXPIRES 12/31/07

I HEREBY CERTIFY THAT THIS IS A TRUE AND EXACT COPY OF THE ORIGINAL.  
 CHRIS E. FOWLE, PLS 73590

Roberts & Associates  
 LAND SURVEYING INC.

English Village Ctr.  
 15957 Hwy 101 S. #11  
 P.O. Box 2791  
 Harbor, OR 97415  
 Ph: 541-469-0162  
 Fax: 541-469-5456  
 Drawn By: CEF Date: 11/15/06  
 Checked By: RPR Job No. 05-234  
 Drawing Name: LCE 2 Sheet 4 of 5  
 Project Folder: 05-234

Revised RAA  
 8/22/2007

41S 13W 06BA  
 SUPPLEMENTAL MAP NO. 2  
 BROOKINGS