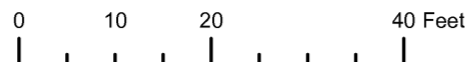


THIS MAP WAS PREPARED FOR ASSESSMENT PURPOSE ONLY



SUPPLEMENTAL MAP NO. 1
NE 1/4 NW 1/4 SECTION 06 T.41S. R.13W. W.M.
CURRY COUNTY

1" = 20'

41S 13W 06BA
SUPPLEMENTAL MAP NO. 1
BROOKINGS

PLAT NUMBER 2007-18

INSTRUMENT NO. 2007-3306

KEYSTONE COURT CONDOMINIUM

PREPARED FOR:
KURT R. KESSLER AND
VICTORIA V.J. KESSLER
PO BOX 6335
BROOKINGS, OREGON 97415
(541) 469-7853

LOCATED IN
NE 1/4 OF NW 1/4, SECTION 6,
T41S, R13W, WILLAMETTE MERIDIAN,
CITY OF BROOKINGS, CURRY COUNTY, OREGON

CURVE TABLE					
CURVE	DELTA	RADIUS	LENGTH	TANGENT	CHORD
C1	84°35'20"	5.17'	8.53'	5.60'	S43°12'38"W 7.59'
C2	63°13'14"	6.47'	7.14'	3.98'	S49°08'18"E 6.78'
C3	44°58'08"	6.47'	6.08'	2.88'	S04°57'23"W 4.95'
C5	15°07'17"	56.88'	15.01'	7.55'	S45°34'01"W 14.97'

LINE TABLE		
LINE	BEARING	LENGTH
L1	S00°19'12"W	1.39'
L2	N89°57'10"E	1.66'
L3	S00°02'50"E	2.36'
L4	S45°04'55"E	2.89'
L5	S00°02'50"E	4.10'
L6	S44°55'05"W	2.89'
L7	S89°57'10"W	7.75'
L8	S89°57'10"W	7.77'
L9	N00°02'50"W	3.77'
L10	S89°51'45"W	3.92'
L11	N00°02'50"W	3.77'
L12	N89°57'10"E	3.79'
L13	S89°48'41"E	5.43'
L14	S00°19'57"E	5.41'
L15	S89°57'10"W	2.11'
L16	N00°02'50"W	6.51'
L17	S00°02'50"E	1.34'
L18	N89°57'10"E	5.57'
L19	S00°02'50"E	1.34'
L20	N87°51'38"E	5.24'
L21	N00°41'05"E	1.45'
L22	S89°55'51"W	1.69'

LINE TABLE		
LINE	BEARING	LENGTH
L23	N00°04'09"W	2.36'
L24	N45°06'14"W	2.89'
L25	N00°04'09"W	4.10'
L26	N44°53'46"E	2.89'
L27	N89°55'51"E	7.76'
L28	N89°55'51"E	7.75'
L29	S00°04'09"E	3.55'
L30	S89°58'28"W	3.96'
L31	S00°04'09"E	3.54'
L32	S89°55'51"W	3.91'
L33	N00°04'09"W	1.55'
L34	S89°35'53"E	6.52'
L35	N00°04'09"W	1.59'
L36	N89°57'55"E	1.30'
L37	S00°32'01"W	5.69'
L38	N89°57'55"E	1.35'
L39	N00°02'05"W	2.11'
L40	S00°02'05"E	1.71'
L41	S89°57'55"W	1.45'
L42	N89°55'51"E	2.11'
L43	N85°55'09"E	4.93'
L44	S00°02'05"E	3.75'
L54	S00°30'49"E	6.50'

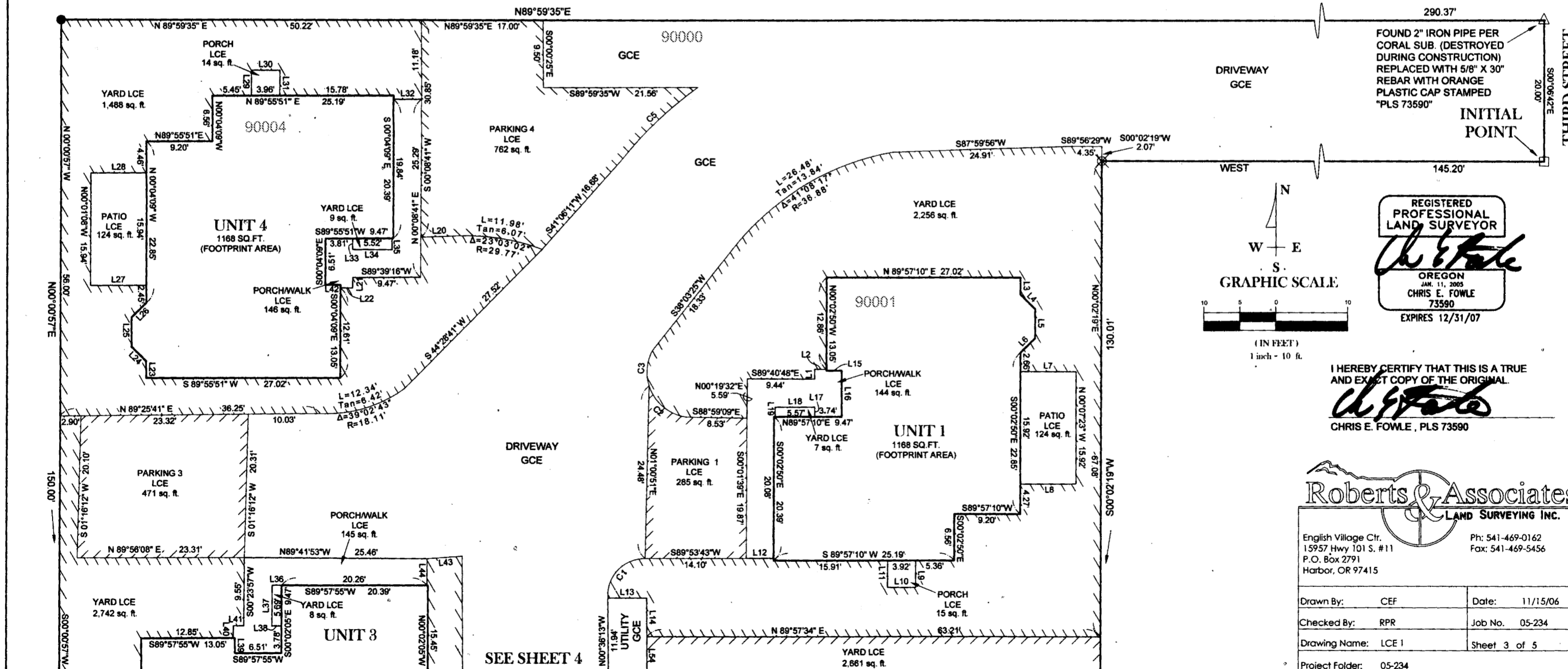
LEGEND

- SET 5/8" X 30" IRON REBAR WITH ORANGE PLASTIC CAP STAMPED "PLS 73590".
- FOUND 5/8" REBAR W/PLASTIC CAP MKD. "PLS 1868" PER PLAT 1990-12.
- ⊗ FOUND 5/8" REBAR (NO CAP) PER CS# 41-1095, 1 PLACE AN ORANGE PLASTIC CAP STAMPED "PLS 73590" ON REBAR.
- △ FOUND AS NOTED.
- LCE LIMITED COMMON ELEMENT
- GCE GENERAL COMMON ELEMENT

NOTE:

AREAS NOT DESIGNATED AS LIMITED COMMON ELEMENT SHALL BE GENERAL COMMON ELEMENT

SEE SHEET 2 FOR BASIS OF BEARINGS



REGISTERED PROFESSIONAL LAND SURVEYOR
Chris E. Fowle
OREGON
JAN. 11, 2005
CHRIS E. FOWLE
73590
EXPIRES 12/31/07

I HEREBY CERTIFY THAT THIS IS A TRUE AND EXACT COPY OF THE ORIGINAL.
Chris E. Fowle
CHRIS E. FOWLE, PLS 73590

Roberts & Associates
LAND SURVEYING INC.

English Village Ctr.
15957 Hwy 101 S. #11
P.O. Box 2791
Harbor, OR 97415
Ph: 541-469-0162
Fax: 541-469-5456

Drawn By: CEF	Date: 11/15/06
Checked By: RPR	Job No. 05-234
Drawing Name: LCE 1	Sheet 3 of 5
Project Folder: 05-234	

Revised RAA
8/22/2007

41S 13W 06BA
SUPPLEMENTAL MAP NO. 1
BROOKINGS