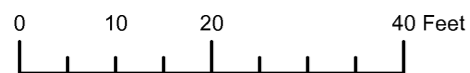


THIS MAP WAS PREPARED FOR ASSESSMENT PURPOSE ONLY



SUPPLEMENTAL MAP NO. 1  
SW1/4 NE1/4 SECTION 06 T.41S. R.13W. W.M.  
CURRY COUNTY

1" = 20'

41S 13W 06AC  
SUPPLEMENTAL MAP NO. 1  
BROOKINGS

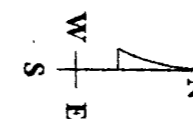
PLAT NUMBER 2007-15

INSTRUMENT NO. 2007-3114

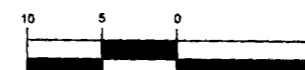
CREEKSIDE CONDOMINIUM  
BEING A REPLAT OF LOT 6  
CREEKSIDE TOWNHOUSES A PLANNED COMMUNITY

PREPARED FOR:  
BODMAN CONSTRUCTION, INC.,  
AN OREGON CORPORATION  
PO BOX 4192  
BROOKINGS, OREGON 97415

LOCATED IN  
SW1/4 OF NE1/4, SECTION 6,  
T41S, R13W, WILLAMETTE MERIDIAN,  
CITY OF BROOKINGS, CURRY COUNTY, OREGON



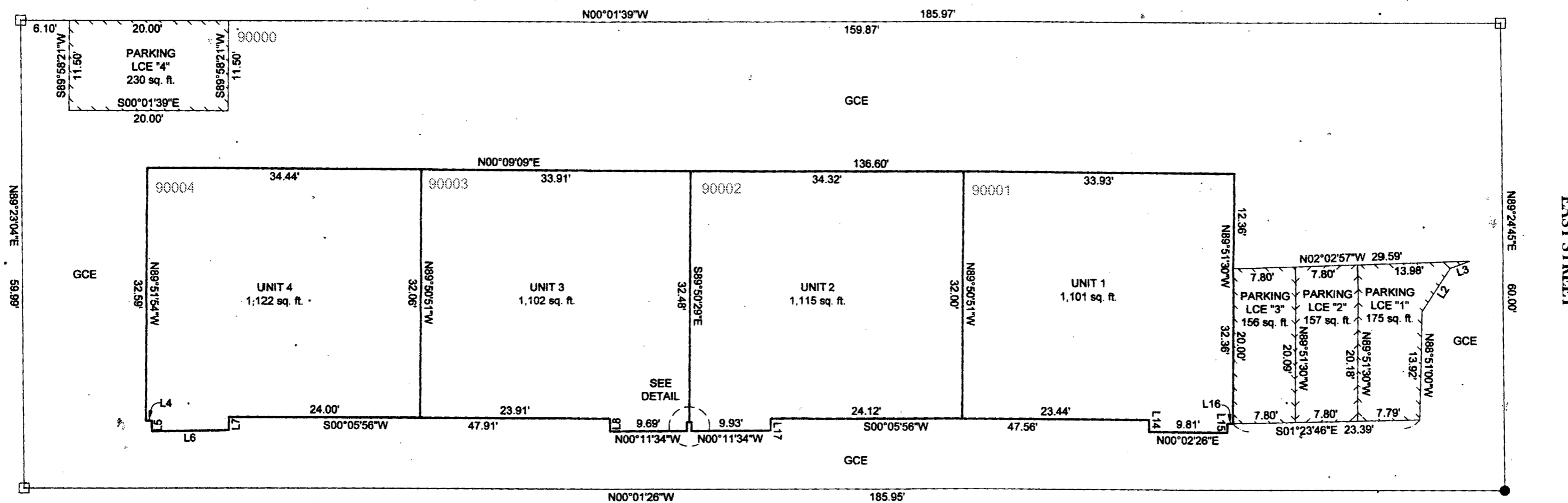
GRAPHIC SCALE



(IN FEET)  
1 inch = 10 ft.

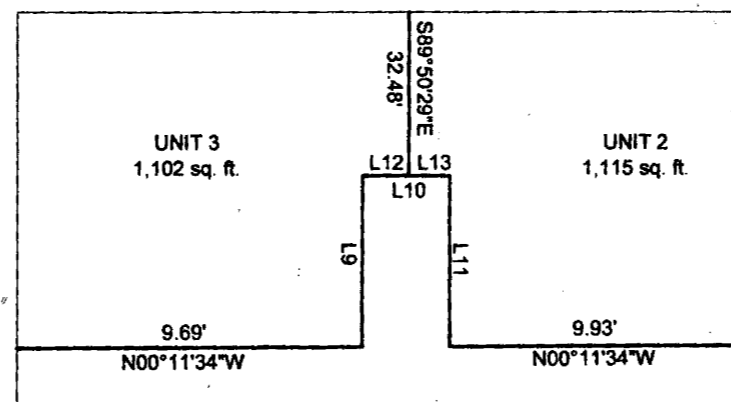
LEGEND

- SET 5/8" X 30" IRON REBAR WITH ORANGE PLASTIC CAP STAMPED "PLS 73590".
  - FOUND 5/8" REBAR W/PLASTIC CAP STAMPED "STUNTZNER ENG" PER PLAT# 2004-10.
  - LCE LIMITED COMMON ELEMENT
  - GCE GENERAL COMMON ELEMENT
- SEE SHEET 2 FOR BASIS OF BEARINGS AND TIES TO BOUNDARY FROM UNIT CORNERS



REGISTERED PROFESSIONAL LAND SURVEYOR  
*Chris Fowle*  
OREGON  
JAN. 11, 2005  
CHRIS E. FOWLE  
73590  
EXPIRES 12/31/07

LINE	BEARING	LENGTH
L2	N57°50'45"W	6.66'
L3	N21°05'54"W	2.58'
L4	N00°03'23"E	0.73'
L5	S89°54'04"E	1.37'
L6	N00°45'29"W	9.70'
L7	N89°54'04"W	1.72'
L8	N89°54'04"W	1.65'
L9	N89°56'37"W	1.15'
L10	N00°03'23"E	0.58'
L11	N89°56'37"W	1.15'
L12	N00°03'23"E	0.31'
L13	N00°03'23"E	0.27'
L14	N89°54'04"W	1.54'
L15	N89°56'37"W	1.13'
L16	N00°03'23"E	0.70'
L17	N89°54'04"W	1.55'



DETAIL - NO SCALE

**Roberts & Associates**  
LAND SURVEYING INC.

611 SPRUCE STREET  
P.O. Box 1599  
Brookings, OR 97415  
Ph: 541-469-0162  
Fax: 541-469-5456

Drawn By: CEF	Date: JAN., 2007
Checked By: RPR	Job No. 05-183
Drawing Name: CONDODETAIL	Sheet 3 of 4
Project Folder: 05-183	

I HEREBY CERTIFY THAT THIS IS A TRUE AND EXACT COPY OF THE ORIGINAL  
*Chris Fowle*  
CHRIS E. FOWLE, PLS 73590

Revised RAA  
8/21/2007

41S 13W 06AC  
SUPPLEMENTAL MAP NO. 1  
BROOKINGS