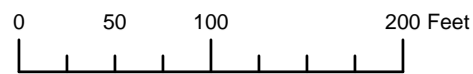


THIS MAP WAS PREPARED FOR ASSESSMENT PURPOSE ONLY



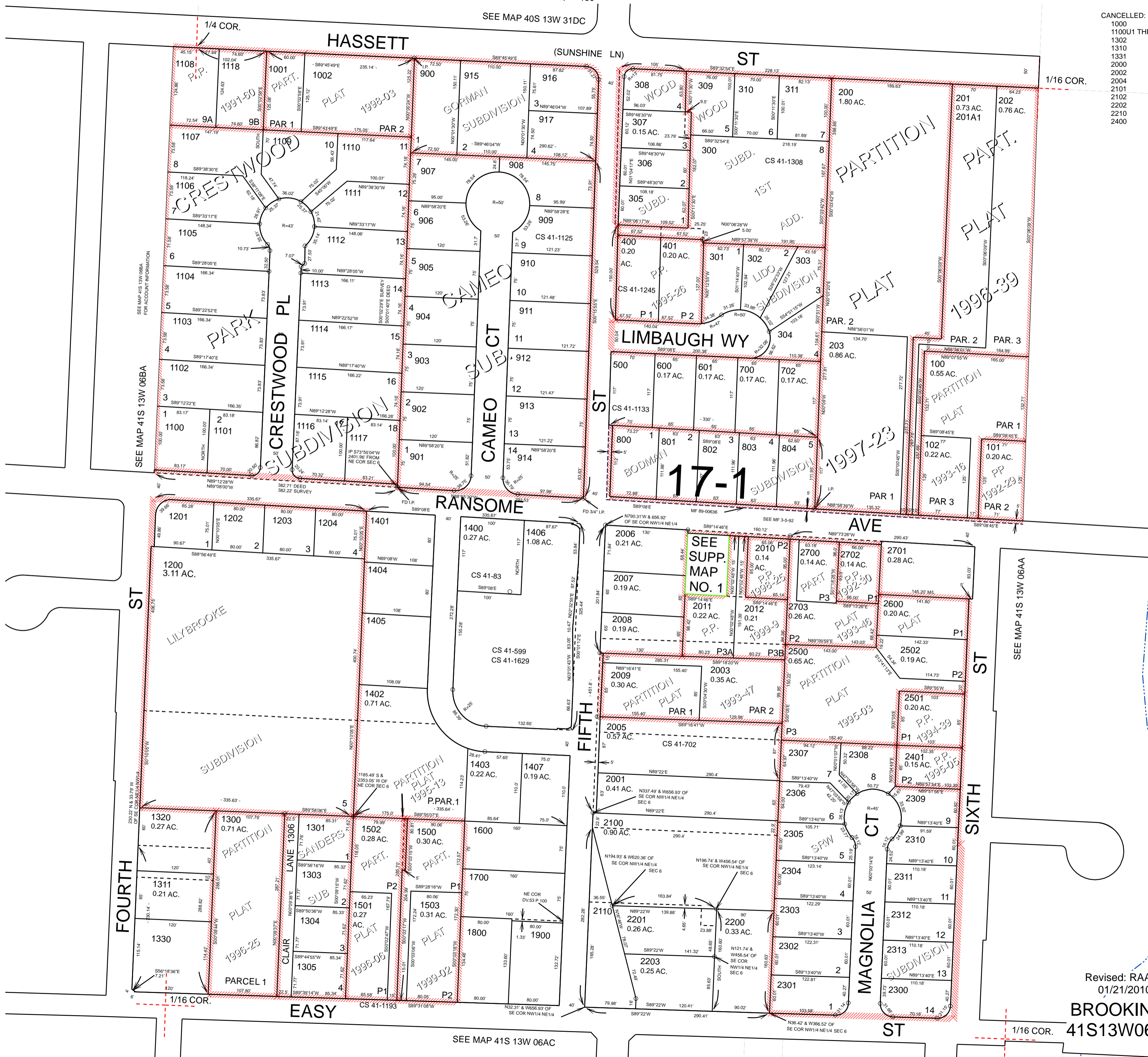
N.W.1/4 N.E.1/4 SEC.6 T.41S. R.13W. W.M. CURRY COUNTY

41S13W06AB BROOKINGS

1" = 100'

SEE MAP 40S 13W 31DC

- CANCELLED:
- 1000
  - 1100U1 THRU 1100U3
  - 1302
  - 1310
  - 1331
  - 2000
  - 2002
  - 2101
  - 2102
  - 2200
  - 2210
  - 2400



SEE MAP 41S 13W 06AA

SEE MAP 41S 13W 06BA FOR ACCOUNT INFORMATION

SEE MAP 41S 13W 06BA

SEE MAP 41S 13W 06AA

SEE MAP 41S 13W 06AC

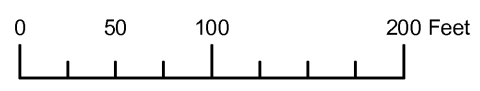
Revised: RAA  
01/21/2010  
**BROOKINGS**  
41S13W06AB



THIS MAP WAS PREPARED FOR ASSESSMENT PURPOSE ONLY

NW1/4 NE1/4 SECTION 06 T.41S. R.13W. W.M. CURRY COUNTY

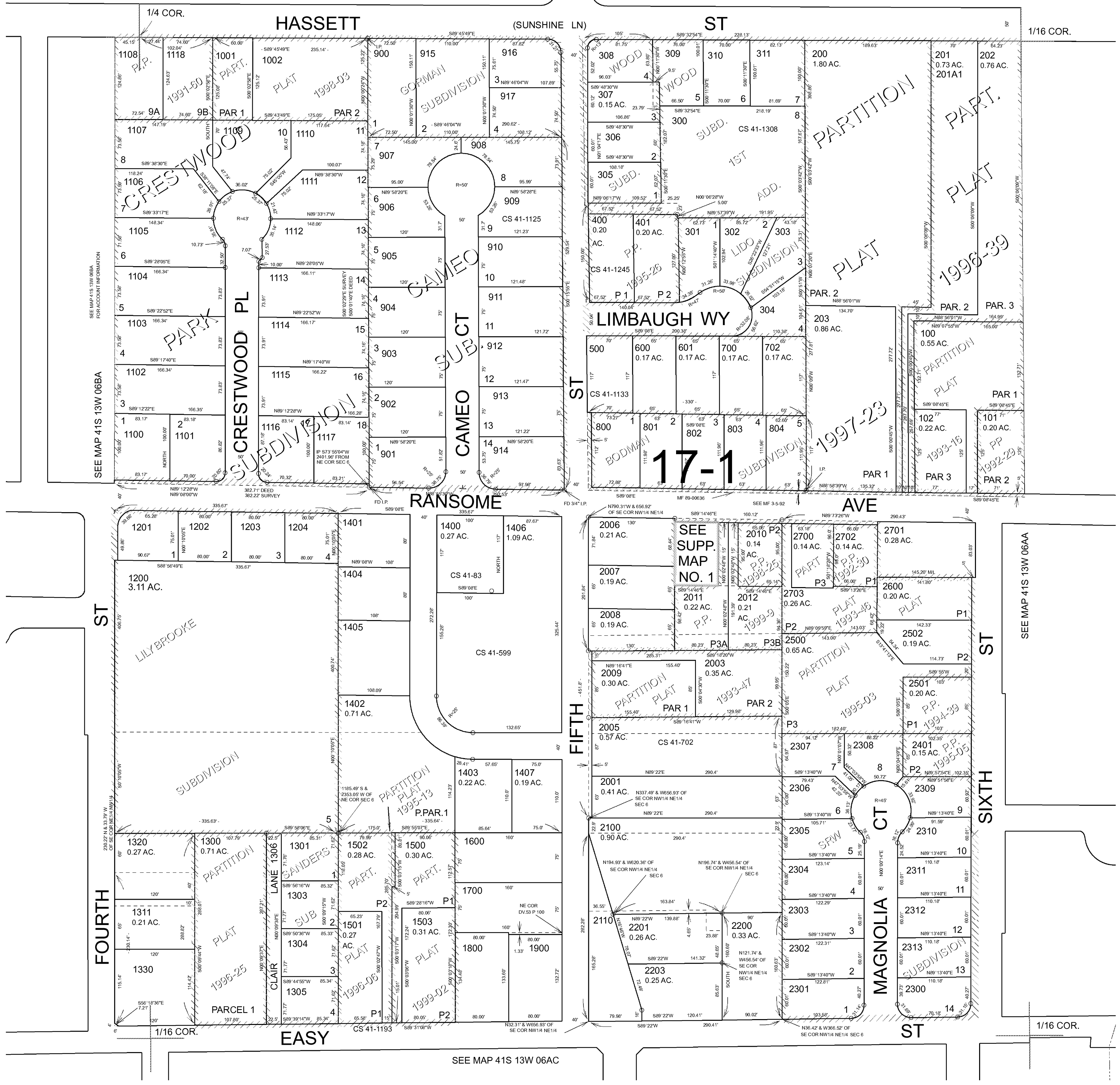
41S 13W 06AB BROOKINGS



1" = 100'

SEE MAP 40S 13W 31DC

CANCELLED NO. 1000 1100U1 THRU 1100U3 1310 1311 2000 2002 2004 2101 2102 2202 2210 2400



SEE MAP 41S 13W 06BA FOR ACCOUNT INFORMATION

SEE MAP 41S 13W 06AA

SEE MAP 41S 13W 06AC

Revised RAA 6/26/2006 BROOKINGS 41S 13W 06AB



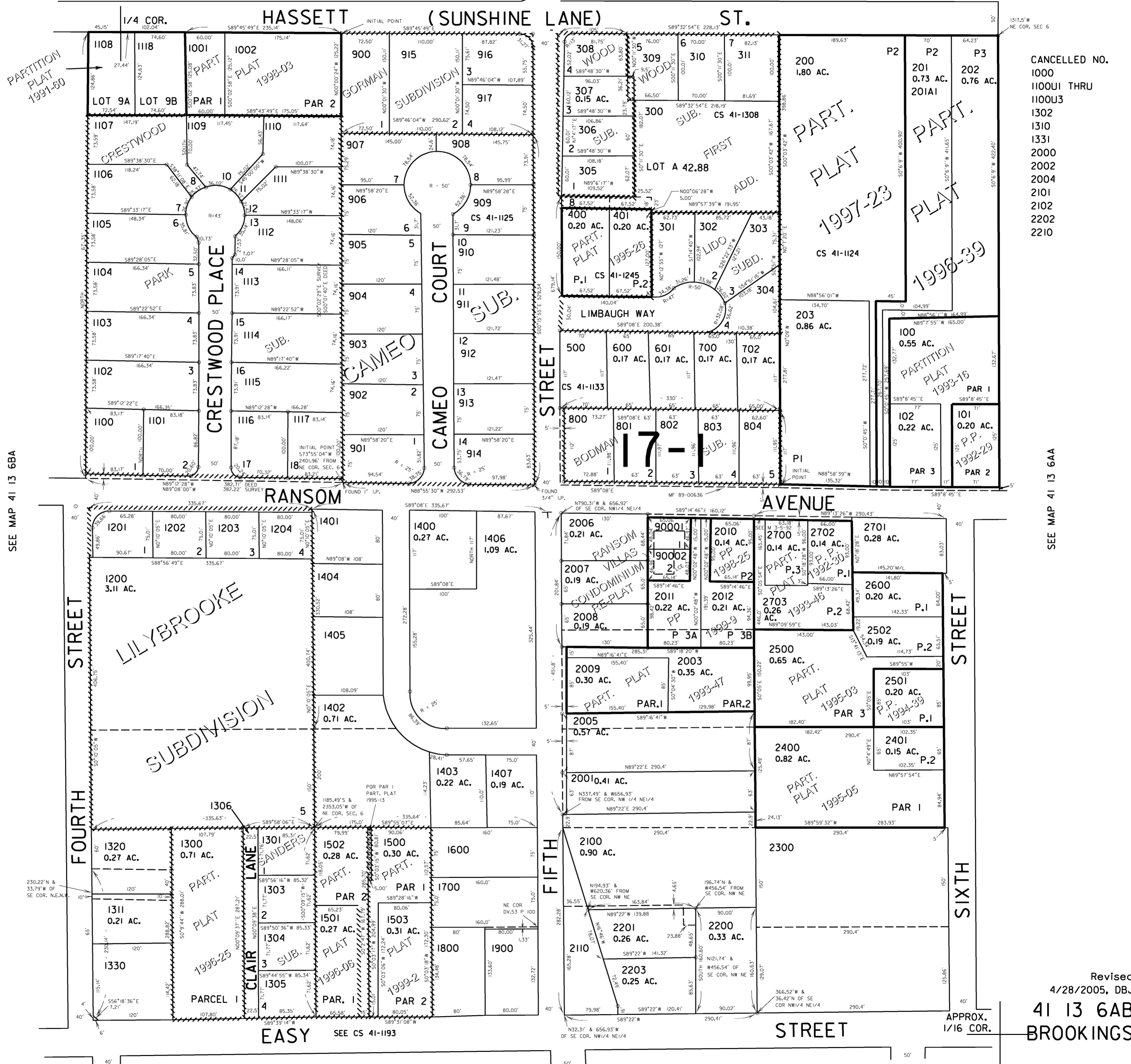
THIS MAP WAS PREPARED FOR ASSESSMENT PURPOSE ONLY

NW1/4 NE1/4 SEC. 6 T.41S. R.13W. W.M. CURRY COUNTY

41 13 6AB BROOKINGS

SEE MAP 40 13 31DC

1" = 100'



SEE MAP 41 13 6BA

SEE MAP 41 13 6AA

- CANCELLED NO.  
 1000  
 1100U1 THRU  
 1100U3  
 1302  
 1310  
 1331  
 2000  
 2002  
 2004  
 2101  
 2102  
 2202  
 2210

Revised  
 4/28/2005, DBJ  
 41 13 6AB  
 BROOKINGS

SEE MAP 41 13 6AC