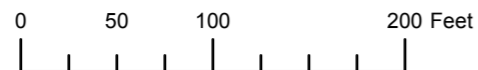


THIS MAP WAS PREPARED FOR ASSESSMENT PURPOSE ONLY

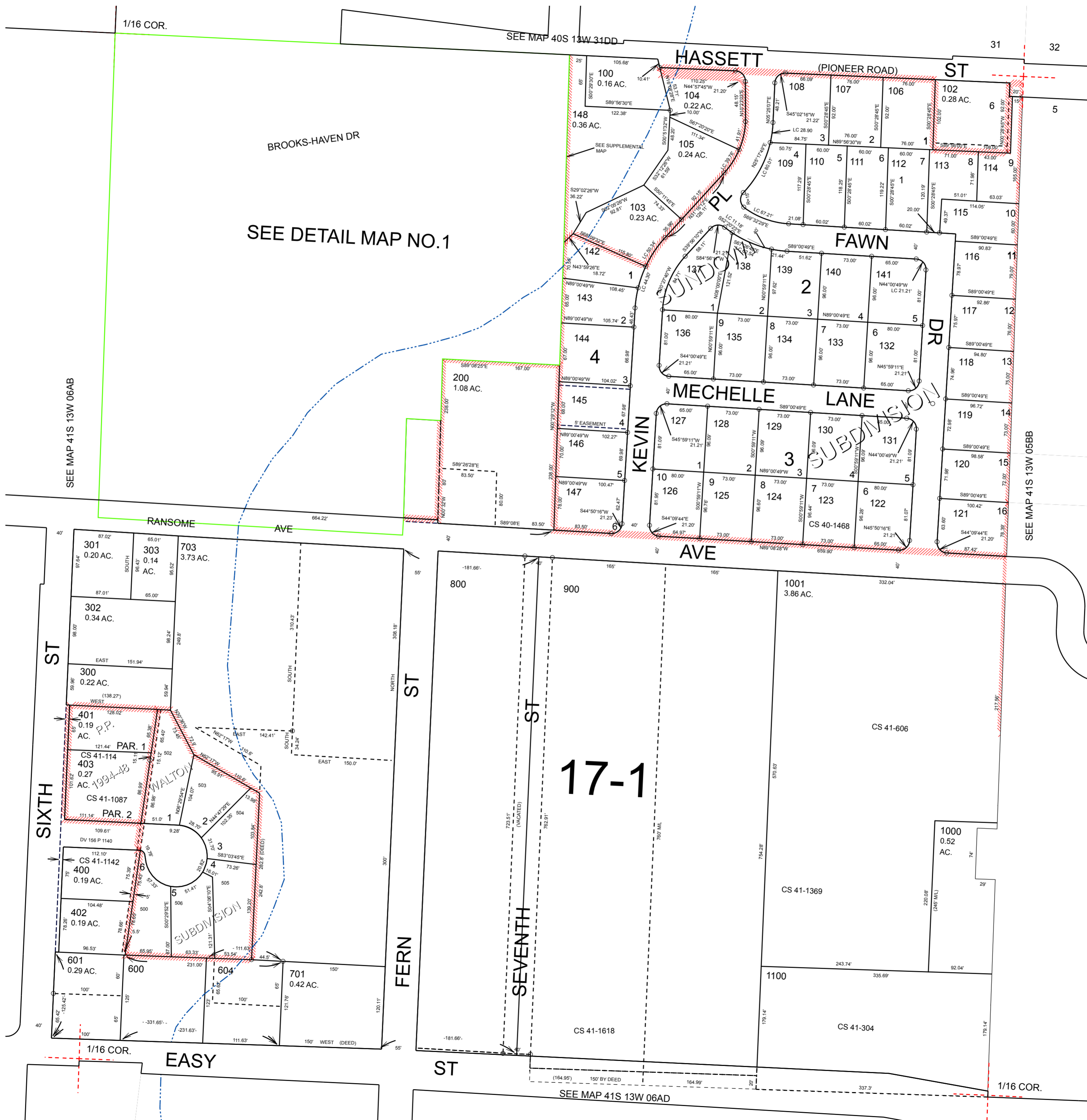


N.E. 1/4 N.E. 1/4 SEC. 6 T. 41 S. R. 13 W. W.M. CURRY COUNTY

41S13W06AA BROOKINGS

1" = 100'

- CANCELLED:
- 101
 - 199
 - 201
 - 203
 - 204
 - 206
 - 208
 - 210
 - 211
 - 212
 - 213
 - 214
 - 215
 - 216
 - 219
 - 220
 - 221
 - 247
 - 501
 - 602
 - 603
 - 700
 - 702



17-1

Revised: RAA
6/2/2010

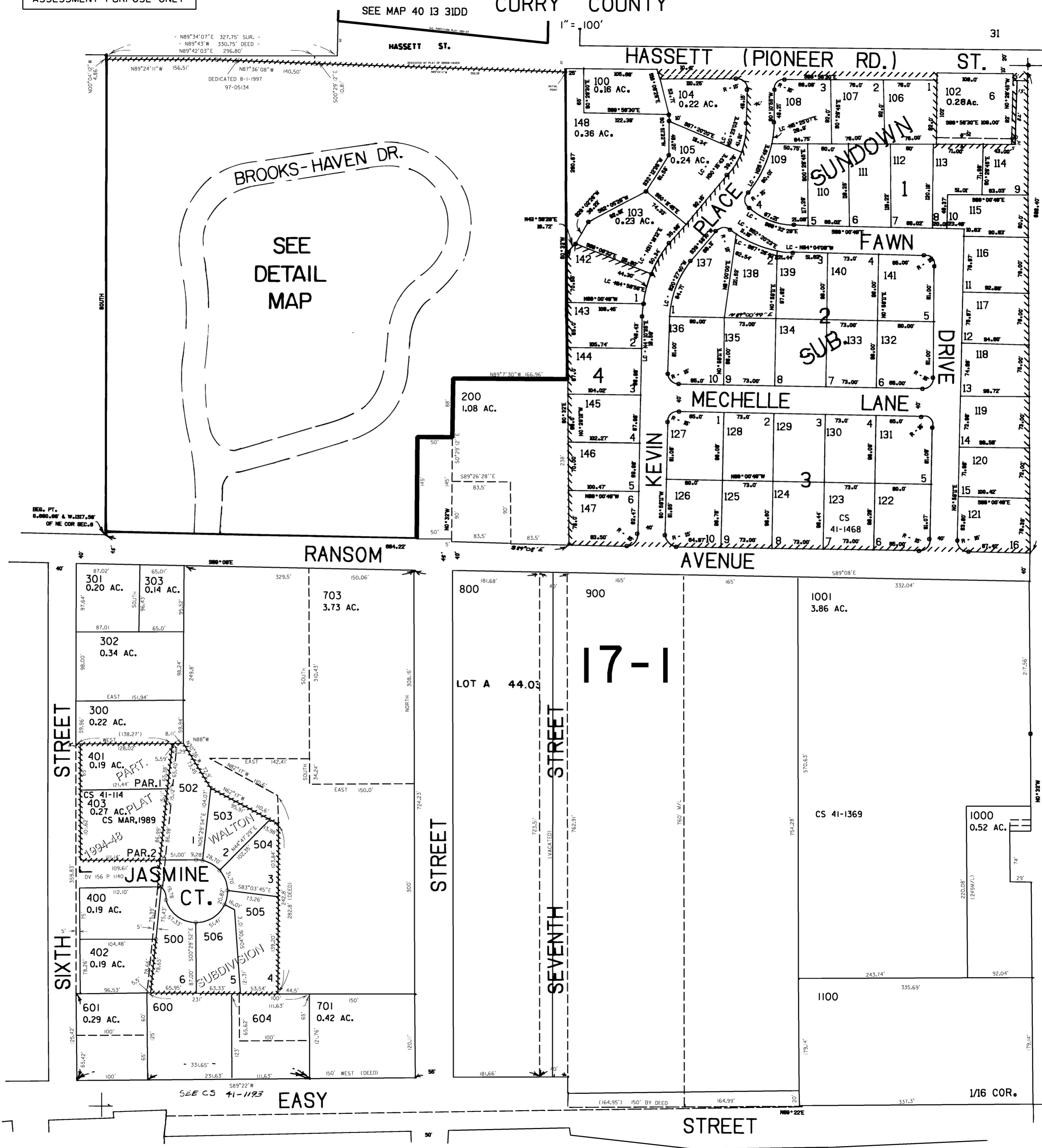
BROOKINGS 41S13W06AA

THIS MAP WAS PREPARED FOR ASSESSMENT PURPOSE ONLY

NE1/4 NE1/4 SEC. 6 T.41S. R.13W. W.M. CURRY COUNTY

41 13 06AA BROOKINGS

SEE MAP 41 13 6AB



31 32 5

- CANCELLED NO.'S
- 101
 - 199
 - 201
 - 203
 - 204
 - 206
 - 208
 - 210 THRU 216
 - 220
 - 221
 - 247
 - 501
 - 602
 - 603
 - 700
 - 702

SEE MAP 41 13 5BB

SEE MAP 41 13 6AD

Revised 5/2/2005, DBJ 41 13 06AA BROOKINGS