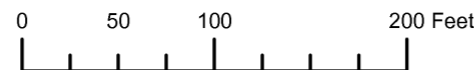


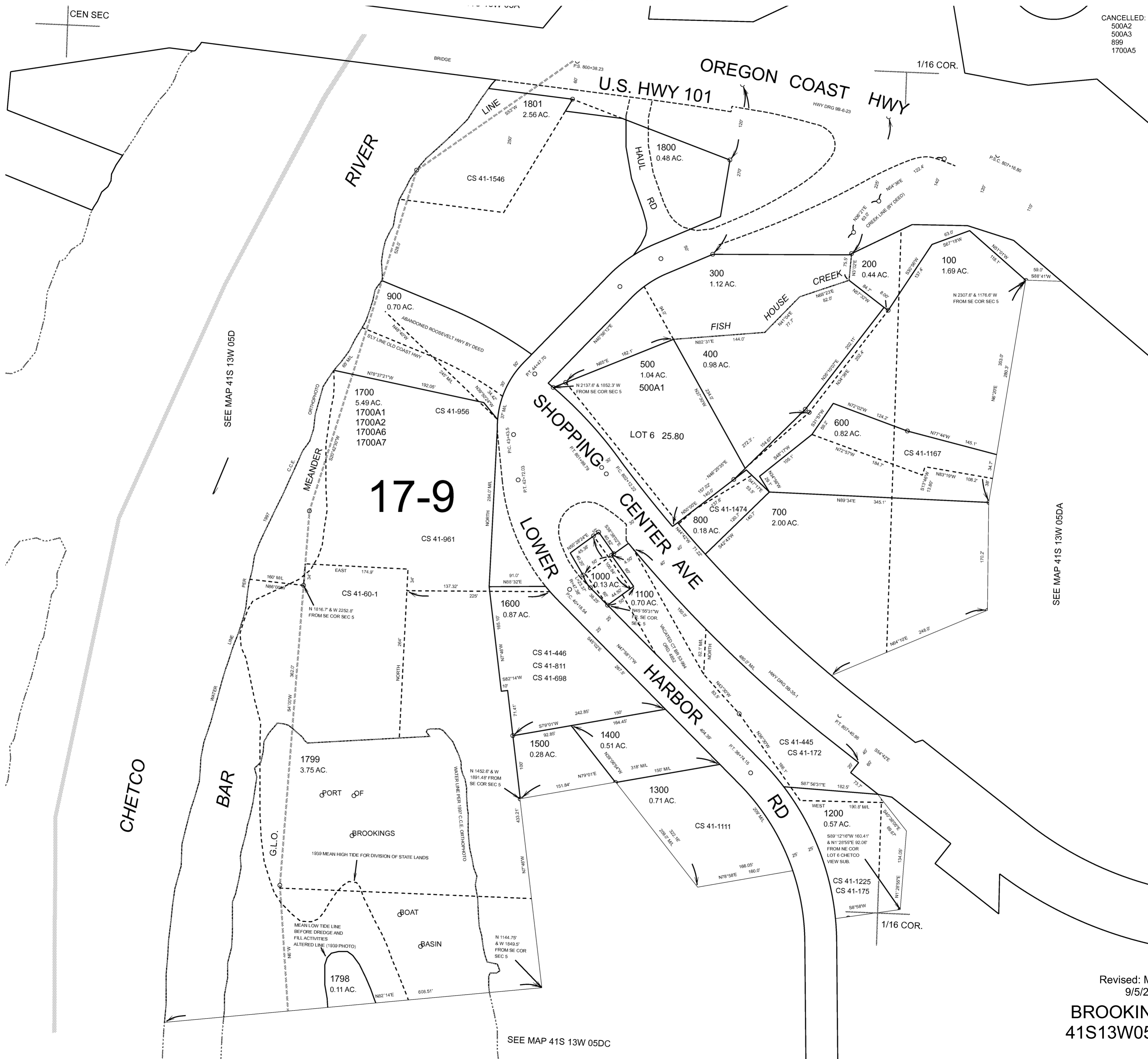
N.W.1/4 S.E.1/4 SEC.5 T.41S. R.13W. W.M.
CURRY COUNTY



1" = 100'

THIS MAP WAS PREPARED FOR
ASSESSMENT PURPOSE ONLY

CANCELLED:
500A2
500A3
899
1700A5



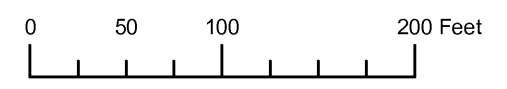
SEE MAP 41S 13W 05D

SEE MAP 41S 13W 05DA

SEE MAP 41S 13W 05DC

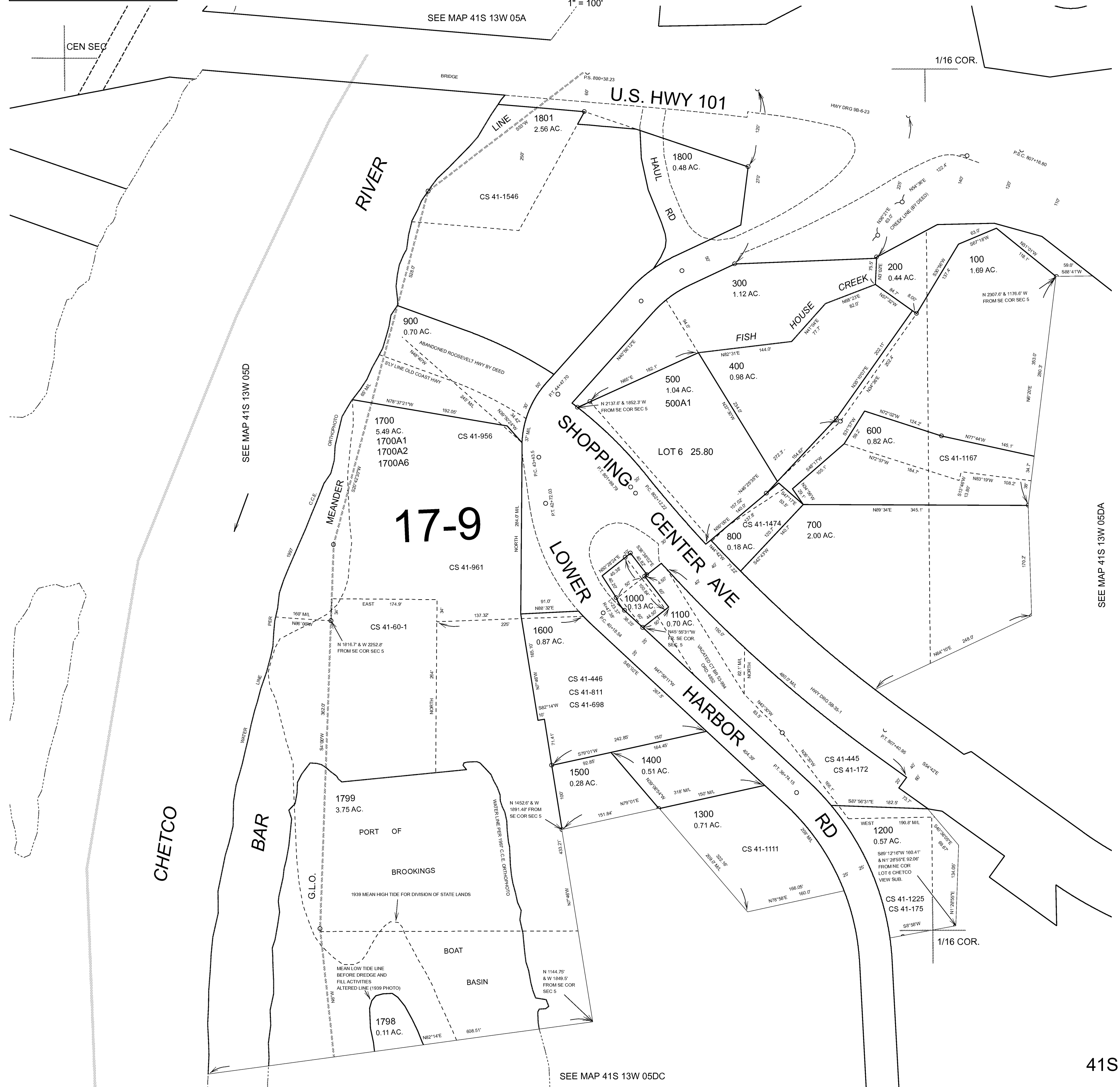
Revised: MRT
9/5/2008

THIS MAP WAS PREPARED FOR ASSESSMENT PURPOSE ONLY



NW1/4 SE1/4 SECTION 05 T.41S. R.13W. W.M. CURRY COUNTY

41S 13W 05DB
CANCELLED NO.
500A2
500A3
1700A5



17-9

CHETCO

BAR

PORT OF

BROOKINGS

BOAT

BASIN

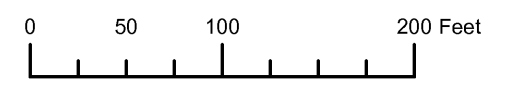
SEE MAP 41S 13W 05DC

SEE MAP 41S 13W 05DA

Revised RAA
3/19/2007

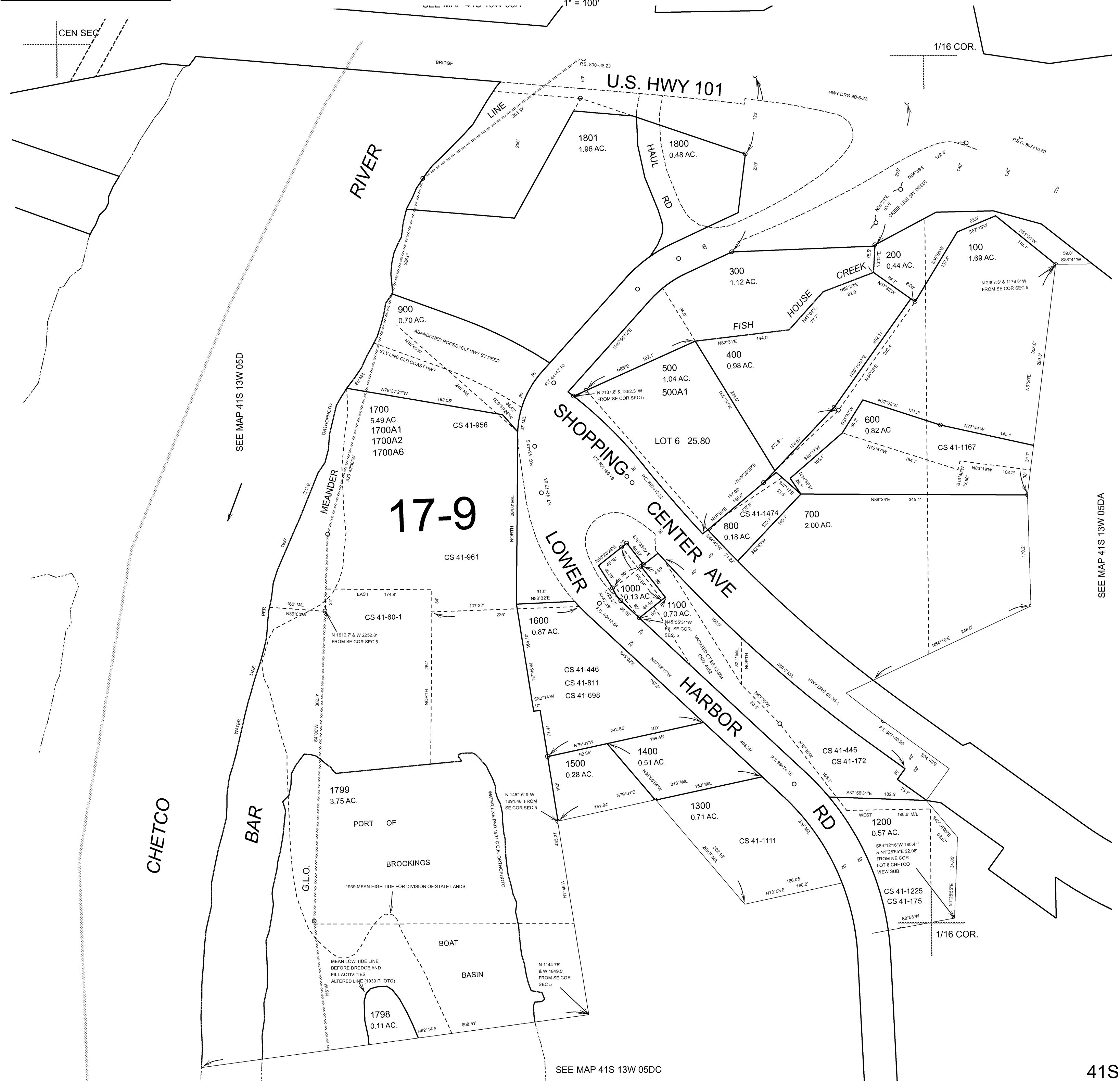
41S 13W 05DB

THIS MAP WAS PREPARED FOR ASSESSMENT PURPOSE ONLY



NW1/4 SE1/4 SECTION 05 T.41S. R.13W. W.M. CURRY COUNTY

41S 13W 05DB
CANCELLED NO.
500A2
500A3
1700A5



SEE MAP 41S 13W 05D

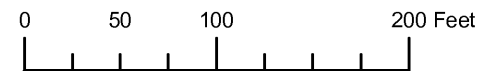
SEE MAP 41S 13W 05DA

SEE MAP 41S 13W 05DC

Revised RAA
8/1/2006

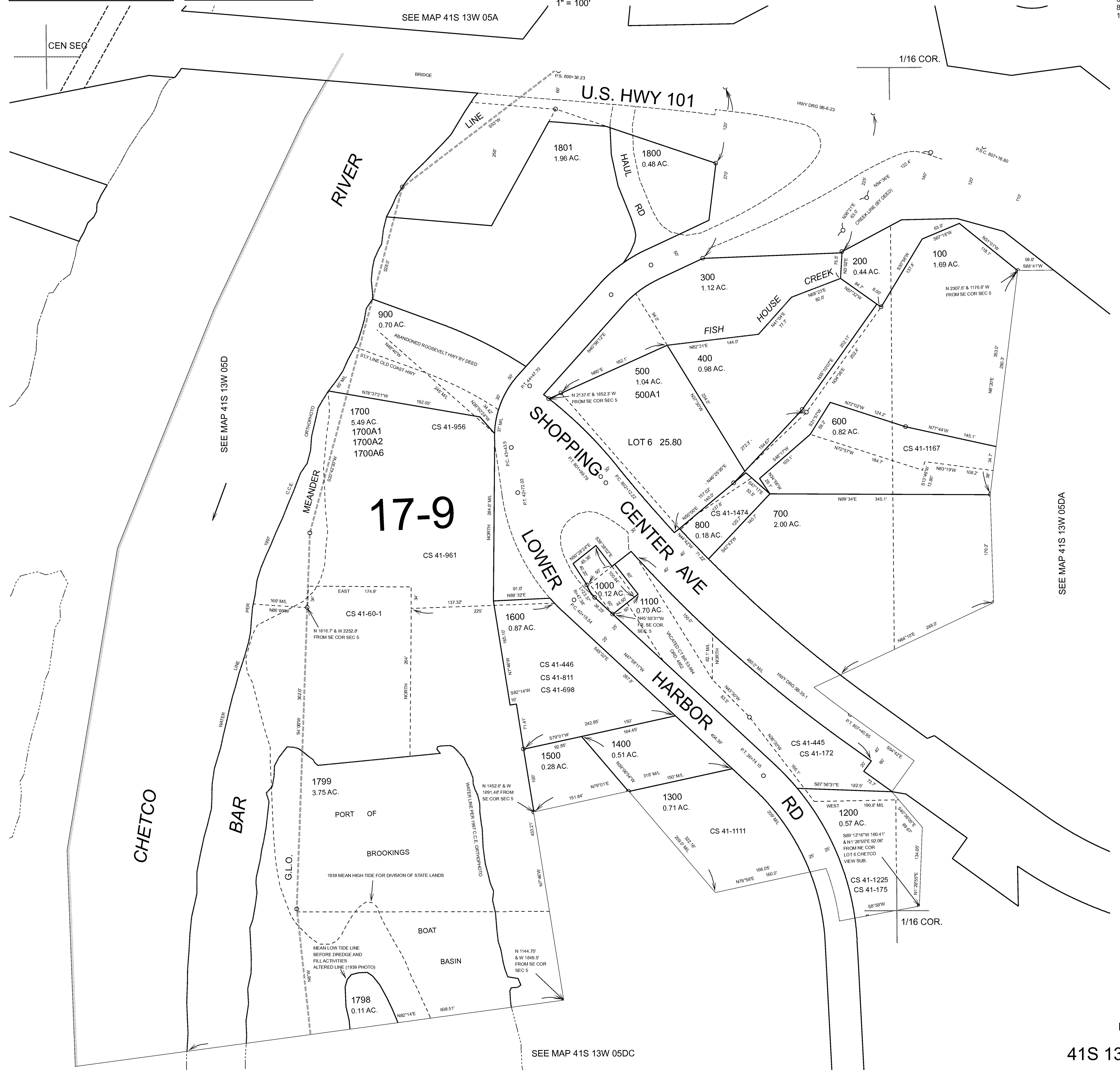
41S 13W 05DB

THIS MAP WAS PREPARED FOR ASSESSMENT PURPOSE ONLY



NW1/4 SE1/4 SECTION 05 T.41S. R.13W. W.M. CURRY COUNTY

41S 13W 05DB
CANCELLED NO.
500A2
500A3
899
1700A5

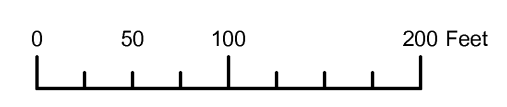


17-9

SEE MAP 41S 13W 05DC

Revised RAA
6/6/2006
41S 13W 05DB

THIS MAP WAS PREPARED FOR ASSESSMENT PURPOSE ONLY

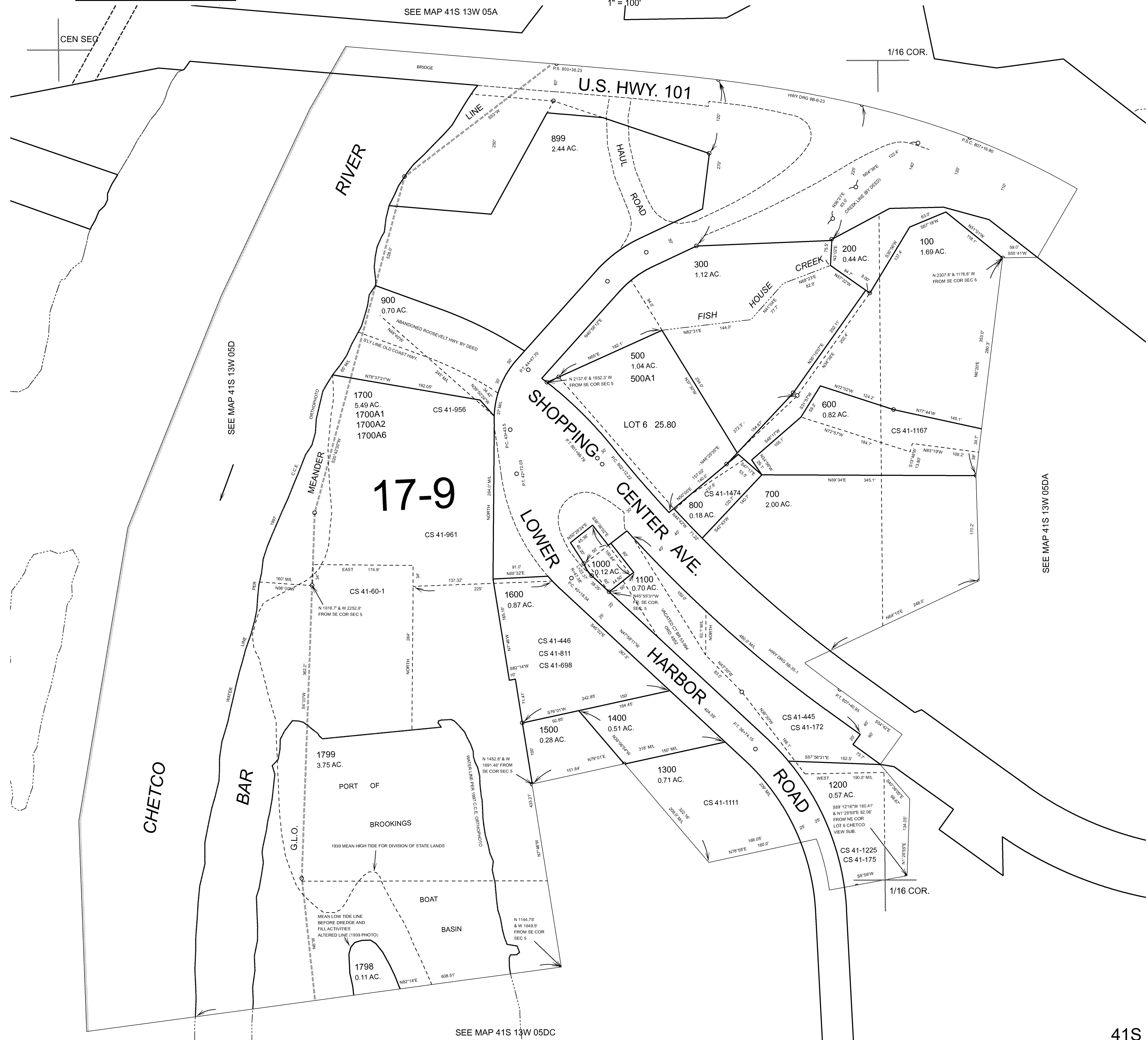


NW1/4 SE1/4 SECTION 05 T.41S. R.13W. W.M. CURRY COUNTY

41S 13W 05DB
CANCELLED NO.
500A2
500A3
1700A5

SEE MAP 41S 13W 05A

1" = 100'



17-9

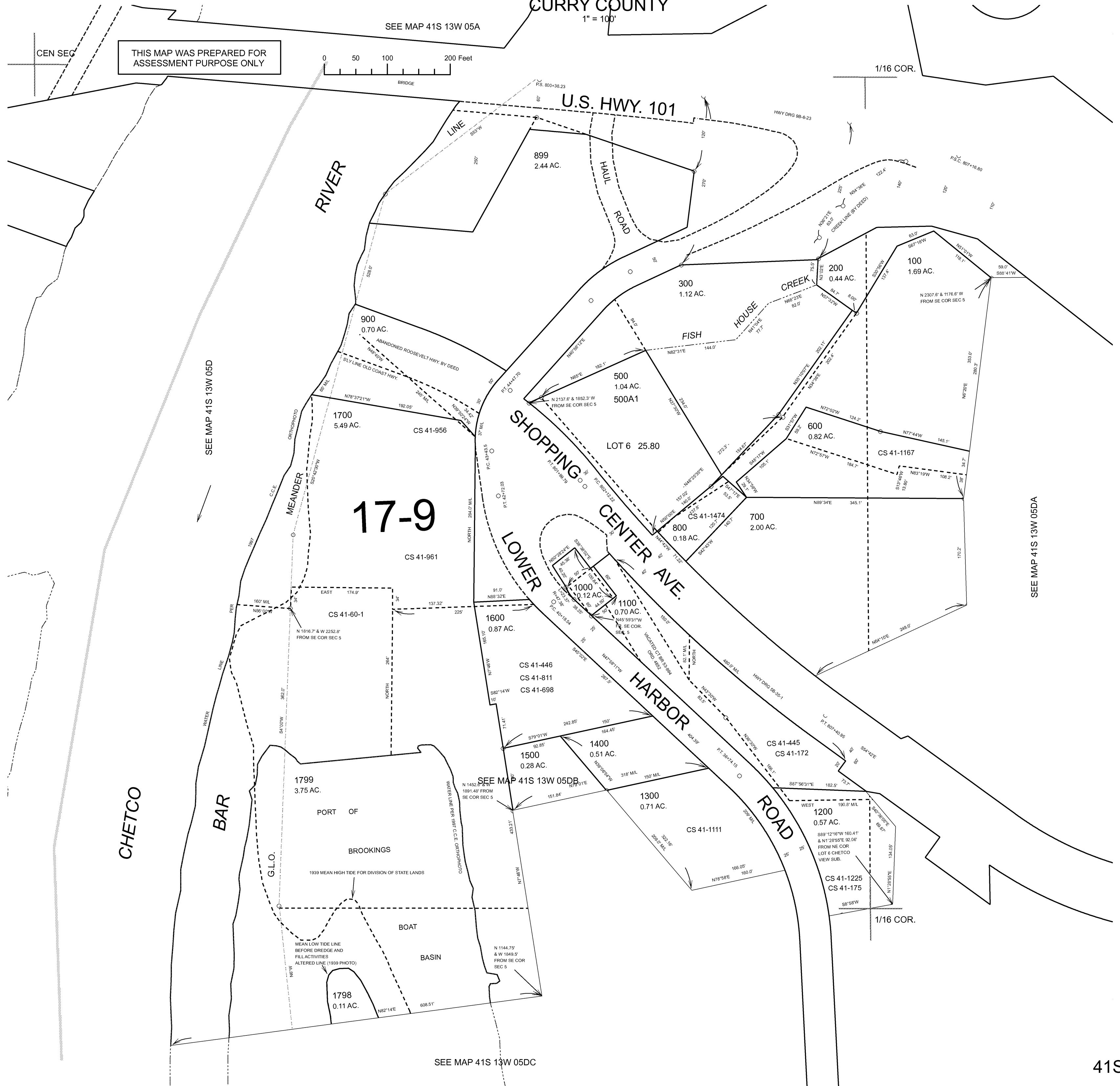
NW1/4 SE1/4 SECTION 05 T.41S. R.13W. W.M.
CURRY COUNTY

41S 13W 05DB
CANCELLED NO.
500A2
500A3
1700A5

THIS MAP WAS PREPARED FOR
ASSESSMENT PURPOSE ONLY

SEE MAP 41S 13W 05A

1" = 100'



SEE MAP 41S 13W 05DC

NW1/4 SE1/4 SECTION 05 T.41S. R.13W. W.M.
CURRY COUNTY

41S 13W 05DB

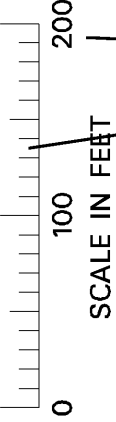
CANCELLED NO.
1700A5

THIS MAP WAS PREPARED FOR
ASSESSMENT PURPOSE ONLY

1"=100'

SEE MAP 41S 13W 05A

CEN. SEC.



1/16 COR.

U.S. HWY. 101

OREGON COAST HIGHWAY

RIVER

HAUL ROAD

CREEK

FISH HOUSE

SHOPPING CENTER AVE. (OLD COAST HWY.)
LOWER CENTER AVE. HARBOR ROAD

BAR

CHETCO

PORT OF BROOKINGS

BOAT BASIN

G.L.O.

1939 MEAN HIGH TIDE FOR DIVISION OF STATE LANDS

MEAN LOW TIDE LINE BEFORE DREDGE AND FILL ACTIVITIES ALTERED LINE (1939 PHOTO)

SEE MAP 41S 13W 05CA

SEE MAP 41S 13W 05DA

17-9

CS 41-961

900
0.70 AC.
1700
5.49 AC.
1700 A1
1700 A2
1700 A6
CS 41-956

899
2.44 AC.

300
1.12 AC.

200
0.44 AC.

100
1.69 AC.

500
1.04 AC.
500 A1
500 A2
500 A3

LOT 6 25.80

600
0.82 AC.

CS 41-1167

1600
0.87 AC.

CS 41-446
CS 41-811
CS 41-698

1100
0.70 AC.

800
0.18 AC.

700
2.00 AC.

1500
0.28 AC.

1400
0.51 AC.

1300
0.71 AC.

1300 A1

1200
0.57 AC.

CS 41-1225
CS 41-175

1799
3.75 AC.

1798
0.11 AC.

SEE MAP 41S 13W 05DC

REVISED: DJ
06/30/03

41S 13W 05DB