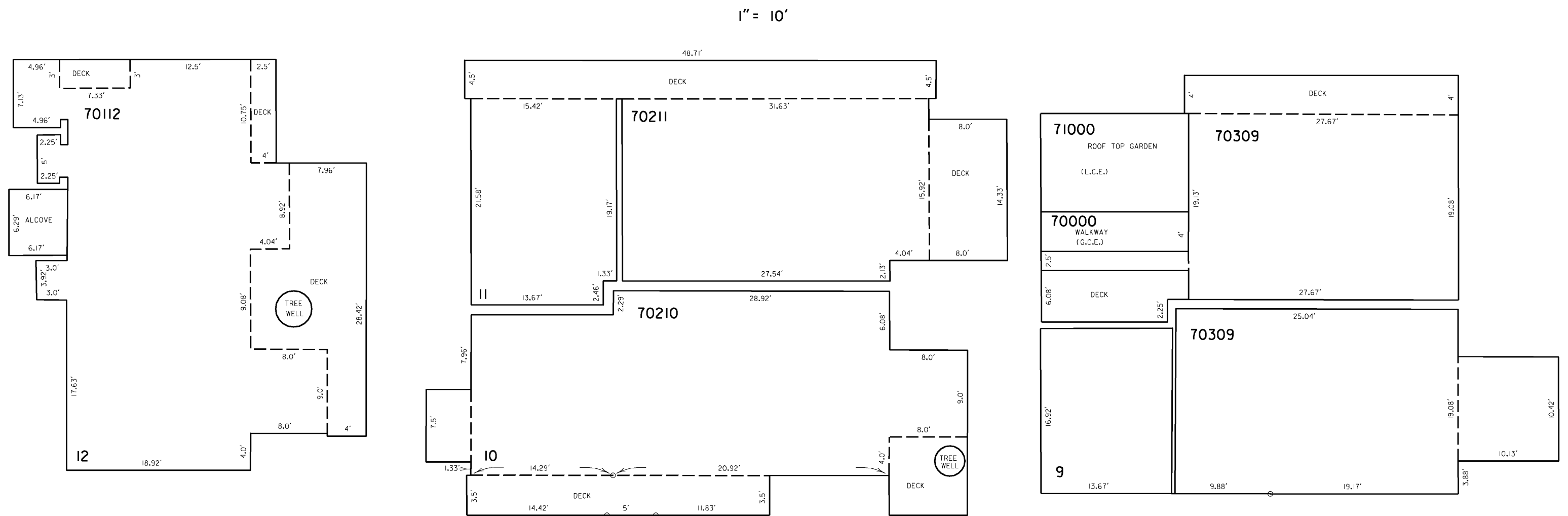
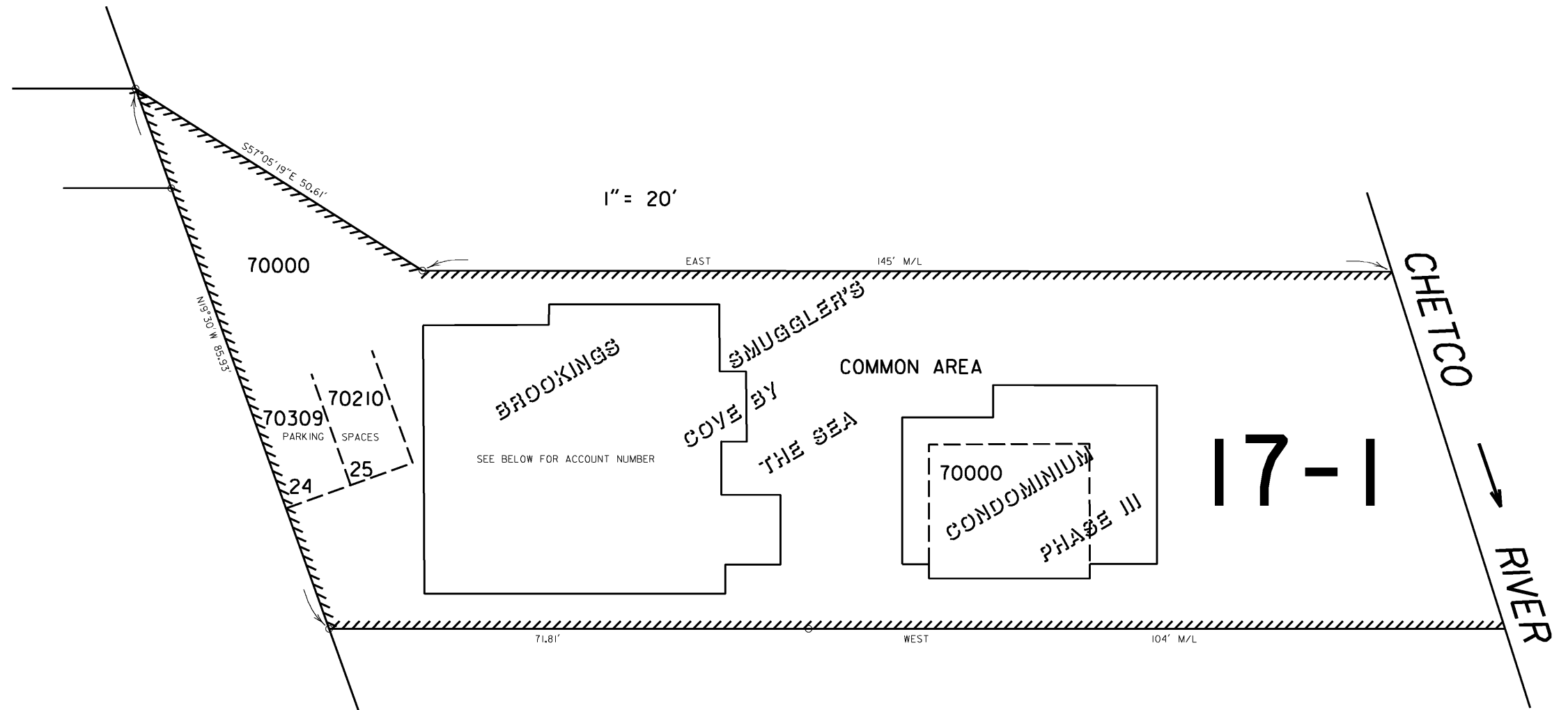


THIS MAP WAS PREPARED FOR
ASSESSMENT PURPOSE ONLY

SUPPLEMENTAL MAP NO. 2
SE1/4 SW1/4 SEC. 5 T.41S. R.13W. W.M.
CURRY COUNTY

41 13 5CD
SUPPLEMENTAL
MAP NO. 2
BROOKINGS



NOTE:
GENERAL COMMON ELEMENTS (GCE)
GENERAL COMMON ELEMENTS CONSIST OF ALL PORTIONS OF THE CONDOMINIUM NOT PART OF A UNIT OR A LIMITED COMMON ELEMENT, INCLUDING BUT NOT LIMITED TO, PARKING AREAS, DRIVEWAYS, RECREATION BUILDING, LAND, AND LANDSCAPING

NOTE:
LIMITED COMMON ELEMENTS (LCE)
LIMITED COMMON ELEMENTS SHALL INCLUDE ROOF, ROOF TOP GARDENS, EXTERIOR WALLS, AND ALL SUPPORTING ELEMENTS OF BUILDING CONTAINING THE CONDOMINIUM UNITS, AND SHALL BE RESERVED FOR THE EQUAL USE OF THE UNITS IN EACH BUILDING. THE DECKS ON THE PLAT AND FLOOR PLAN SHALL BE LIMITED COMMON ELEMENTS AND RESTRICTED FOR THE USE OF UNIT TO WHICH SAID DECKS ARE ADJACENT.

Revised 1/10/01, SD
41 13 5CD
SUPPLEMENTAL
MAP NO. 2
BROOKINGS