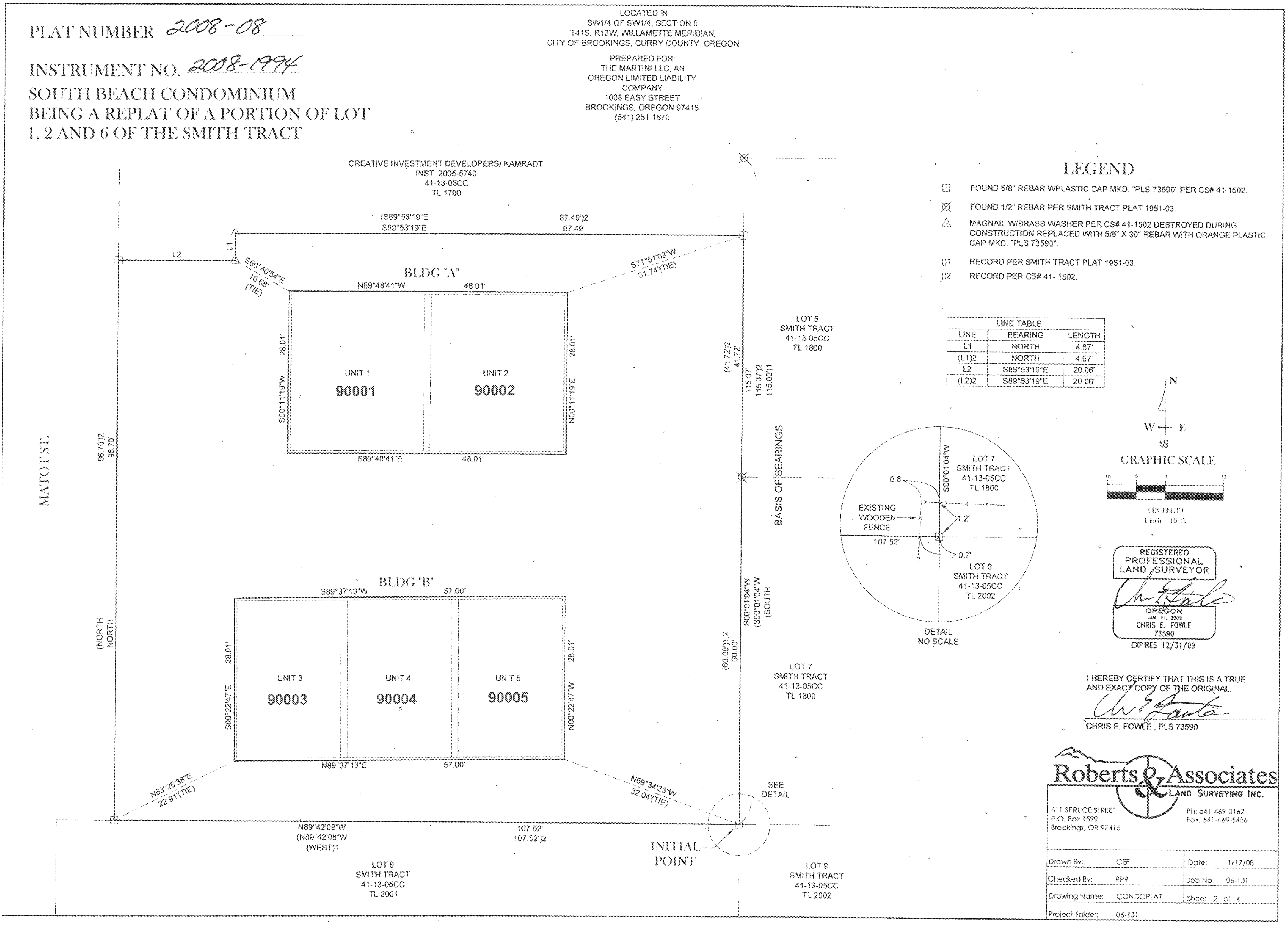


THIS MAP WAS PREPARED FOR ASSESSMENT PURPOSE ONLY

SUPPLEMENTAL MAP NO. 1  
 SW 1/4 SW 1/4 SECTION 05 T41S R13W WM  
 CURRY COUNTY

41S 13W 05CC  
 SUPPLEMENTAL MAP NO. 1  
 SHEET 2



Revised MRT  
 08/22/2008

41S 13W 05CC  
 SUPPLEMENTAL MAP NO. 1  
 SHEET 2

THIS MAP WAS PREPARED FOR  
ASSESSMENT PURPOSE ONLY

SUPPLEMENTAL MAP NO. 1  
SW 1/4 SW 1/4 SECTION 05 T41S R13W WM  
CURRY COUNTY

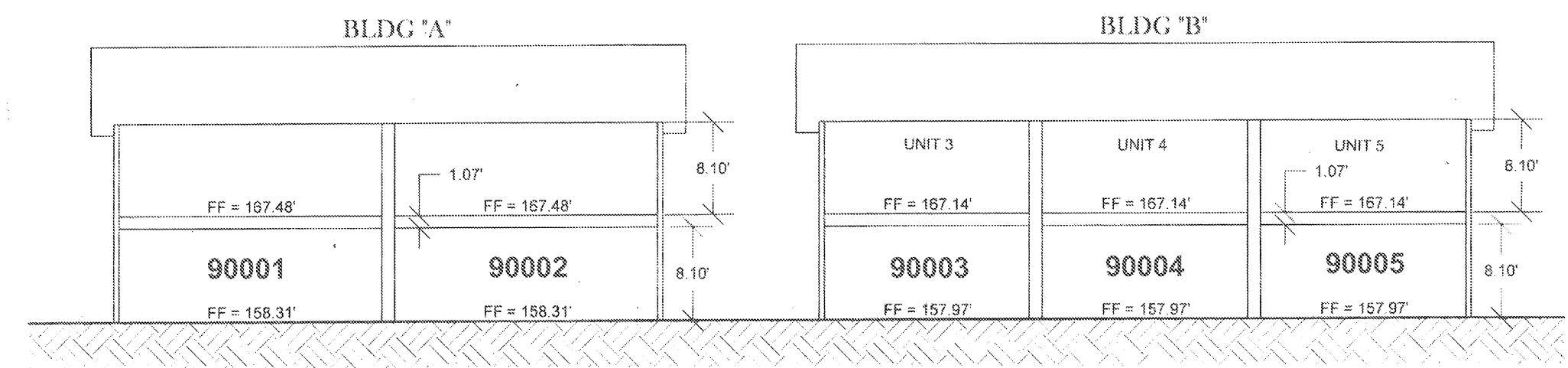
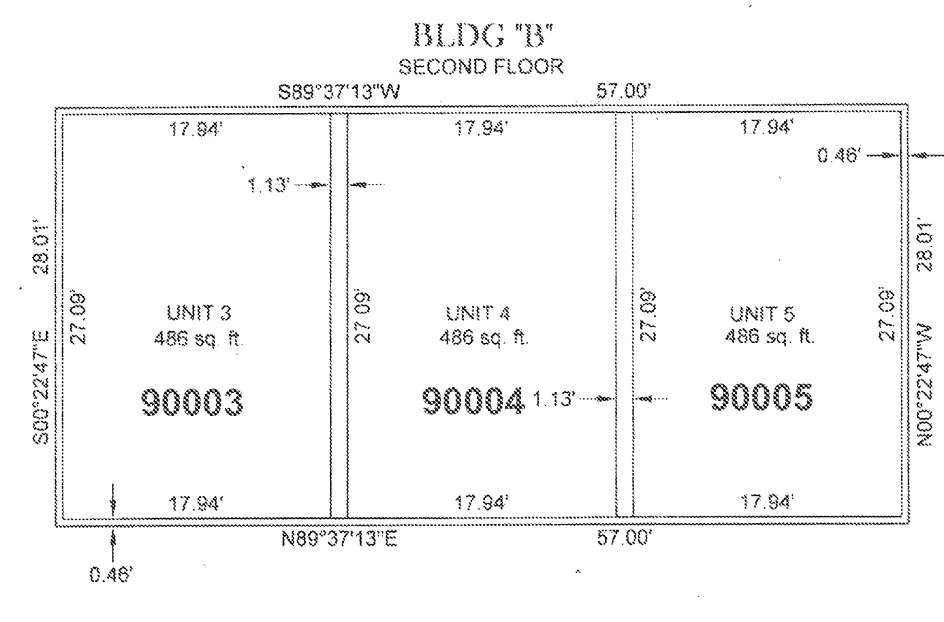
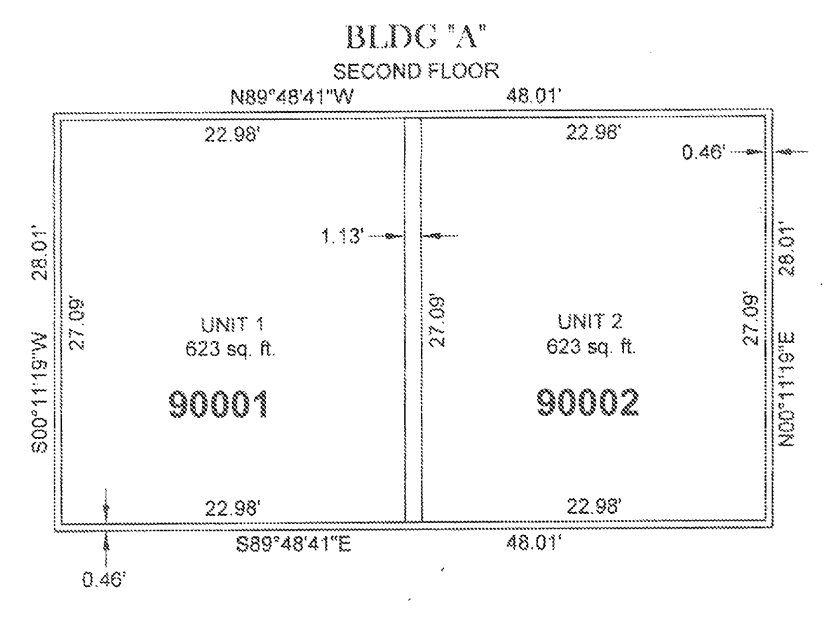
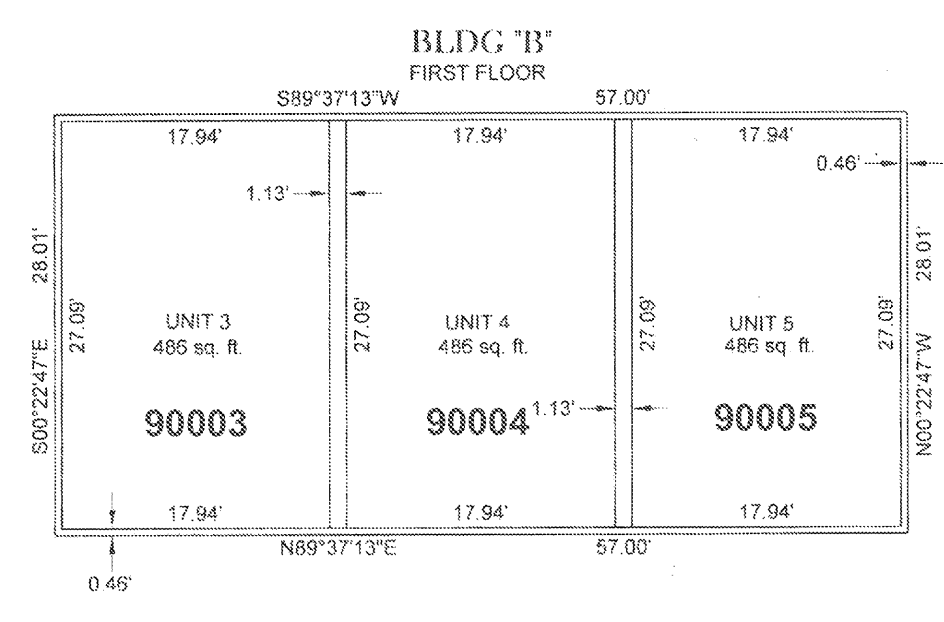
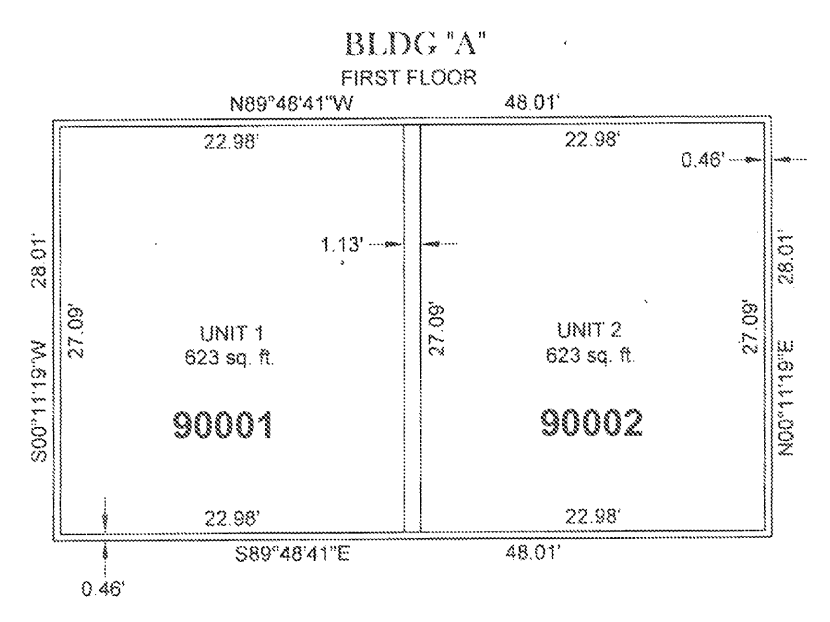
41S 13W 05CC  
SUPPLEMENTAL MAP NO. 1  
SHEET 3

PLAT NUMBER 2008-08  
INSTRUMENT NO. 2008-1994  
SOUTH BEACH CONDOMINIUM  
BEING A REPLAT OF A PORTION OF LOT  
1, 2 AND 6 OF THE SMITH TRACT

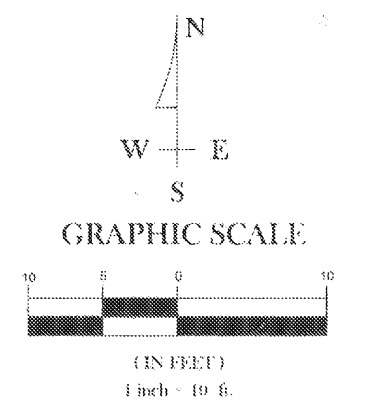
LOCATED IN  
SW1/4 OF SW1/4, SECTION 5,  
T41S, R13W, WILLAMETTE MERIDIAN,  
CITY OF BROOKINGS, CURRY COUNTY, OREGON  
PREPARED FOR:  
THE MARTINI LLC, AN  
OREGON LIMITED LIABILITY  
COMPANY  
1008 EASY STREET  
BROOKINGS, OREGON 97415  
(541) 251-1670

**BENCH MARK**  
A STANDARD NGS BENCH MARK DISC  
DESIGNATION - G 444 RESET  
PID - 0A6199  
ELEVATION = 148.11 FEET (NAVD 88)

**LEGEND**  
FF FINISH FLOOR



ELEVATIONS



REGISTERED  
PROFESSIONAL  
LAND SURVEYOR  
*Chris E. Fowle*  
OREGON  
#11,205  
CHRIS E. FOWLE  
73590  
EXPIRES 12/31/09

I HEREBY CERTIFY THAT THIS IS A TRUE  
AND EXACT COPY OF THE ORIGINAL.  
*Chris E. Fowle*  
CHRIS E. FOWLE, PLS 73590

**Roberts & Associates**  
LAND SURVEYING INC.

611 SPRUCE STREET  
P.O. Box 1599  
Brookings, OR 97415  
Ph: 541-469-0162  
Fax: 541-469-5456

Drawn By: CEF	Date: 1/17/08
Checked By: RPR	Job No. 06-131
Drawing Name: CONDOUNITS	Sheet 3 of 4
Project Folder: 06-131	

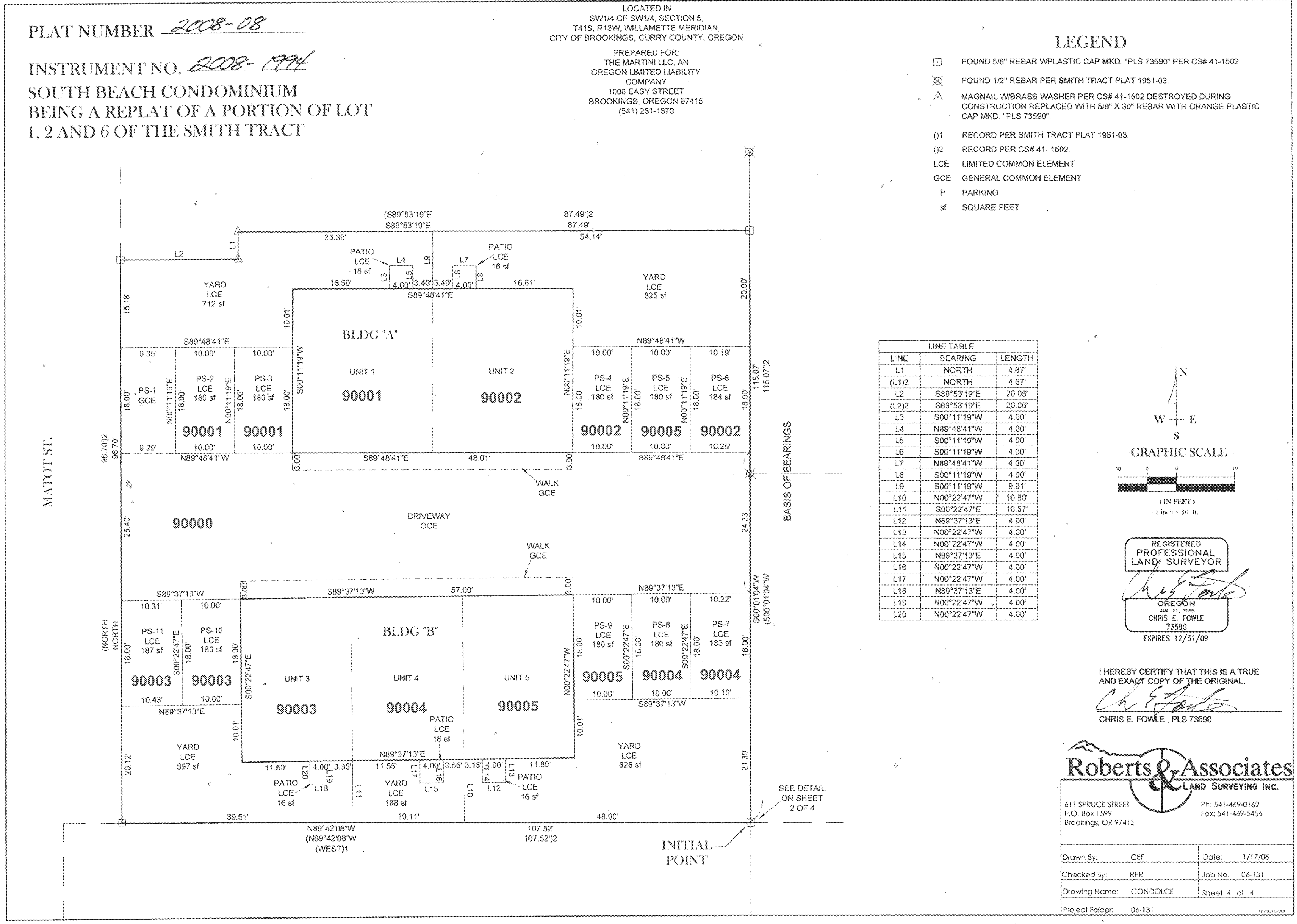
Revised MRT  
08/22/2008

41S 13W 05CC  
SUPPLEMENTAL MAP NO. 1  
SHEET 3

THIS MAP WAS PREPARED FOR ASSESSMENT PURPOSE ONLY

SUPPLEMENTAL MAP NO. 1  
SW 1/4 SW 1/4 SECTION 05 T41S R13W WM  
CURRY COUNTY

41S 13W 05CC  
SUPPLEMENTAL MAP NO. 1  
SHEET 4



Revised MRT  
08/22/2008

41S 13W 05CC  
SUPPLEMENTAL MAP NO. 1  
SHEET 4