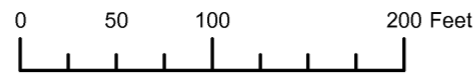


THIS MAP WAS PREPARED FOR ASSESSMENT PURPOSE ONLY



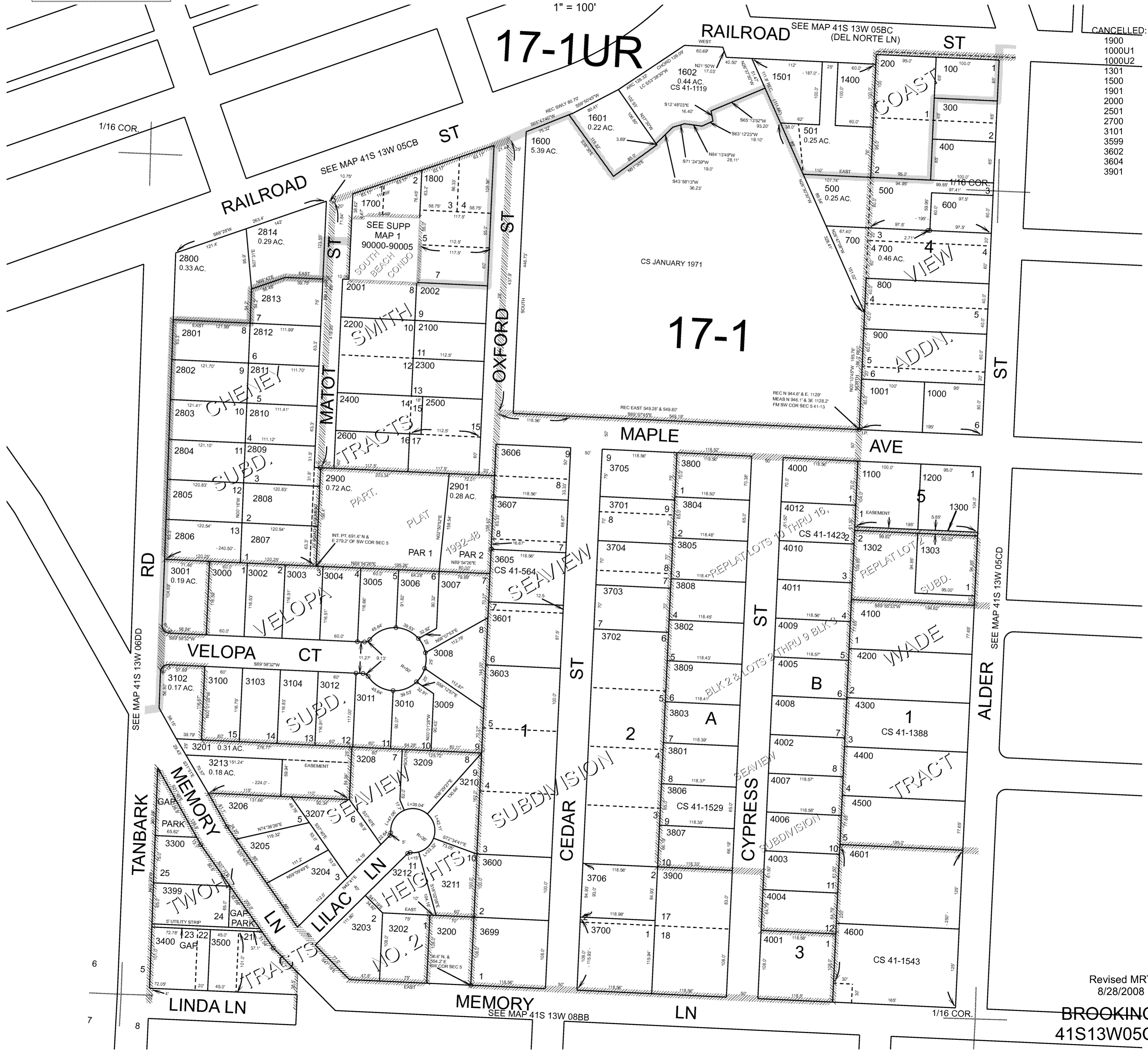
S.W.1/4 S.W.1/4 SEC.5 T.41S. R.13W. W.M. CURRY COUNTY 1" = 100'

41S13W05CC BROOKINGS

17-1UR

17-1

- CANCELLED:
- 1900
  - 1000U1
  - 1000U2
  - 1301
  - 1500
  - 1901
  - 2000
  - 2501
  - 2700
  - 3101
  - 3599
  - 3602
  - 3604
  - 3901



Revised MRT 8/28/2008

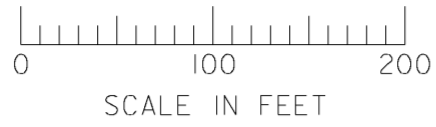
BROOKINGS 41S13W05CC

THIS MAP WAS PREPARED FOR ASSESSMENT PURPOSE ONLY

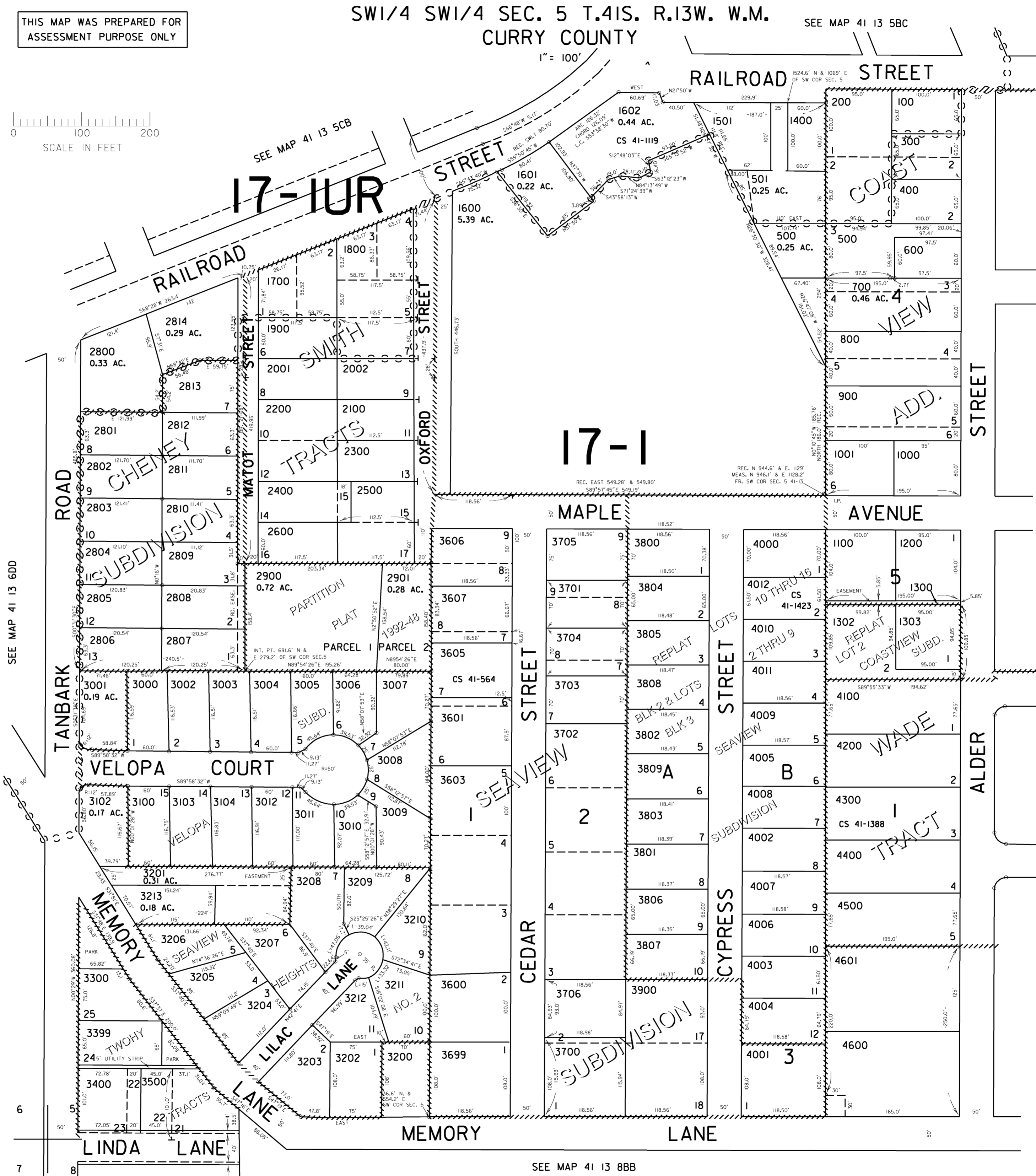
SW1/4 SW1/4 SEC. 5 T.41S. R.13W. W.M. CURRY COUNTY

SEE MAP 41 13 5BC

41 13 5CC BROOKINGS



1" = 100'



- CANCELLED NO.
- 1000U1
- 1000U2
- 1301
- 1500
- 1901
- 2000
- 2501
- 2700
- 3101
- 3599
- 3602
- 3604
- 3901

SEE MAP 41 13 5CD

Revised 4/2/2004, DBJ 41 13 5CC BROOKINGS

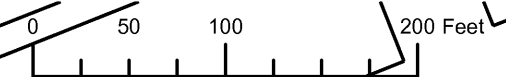
SEE MAP 41 13 8BB

SW1/4 SW1/4 SECTION 05 T.41S. R.13W. W.M.  
CURRY COUNTY

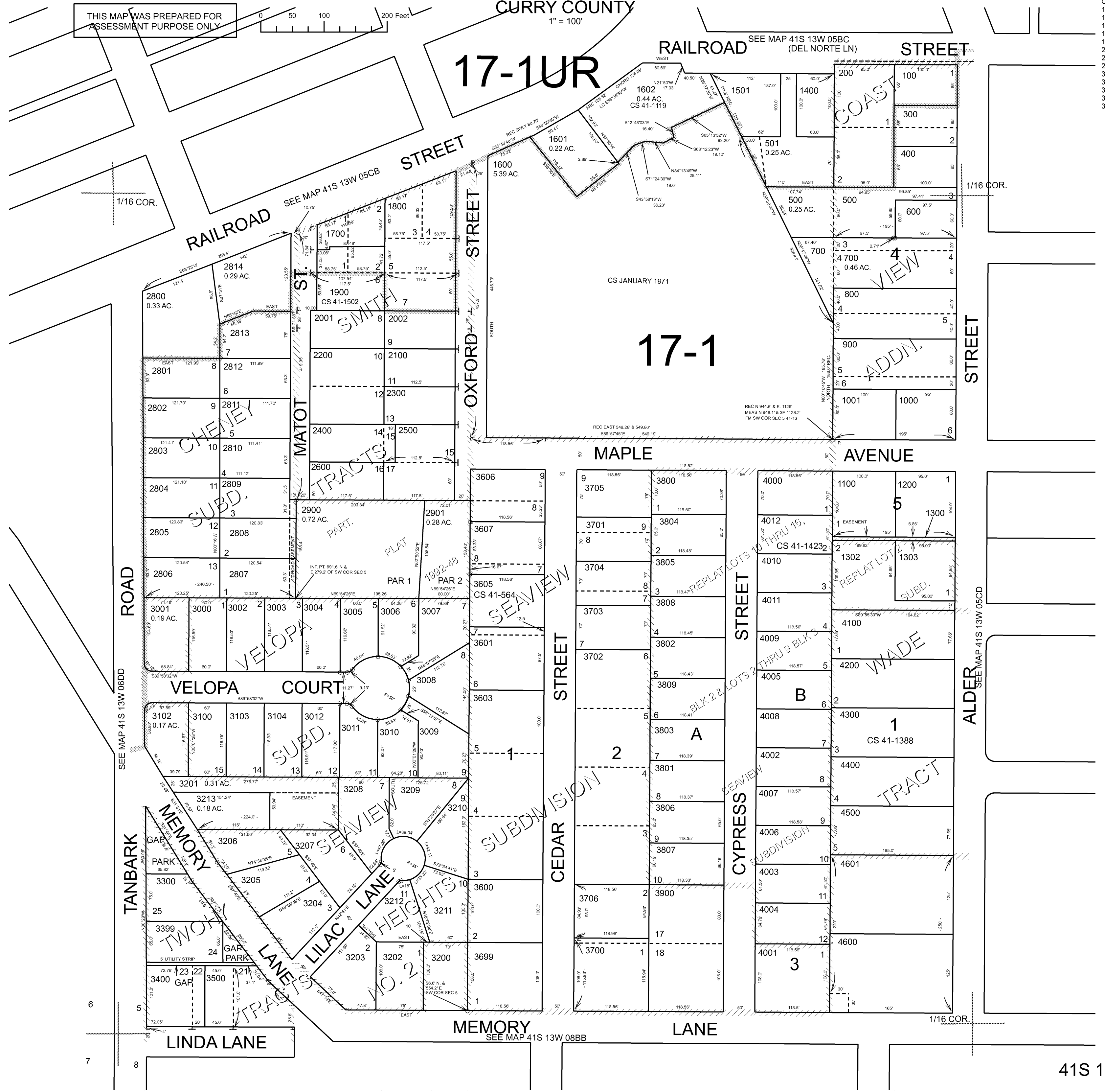
41S 13W 05CC

- CANCELLED NO.
- 1000U1
- 1000U2
- 1301
- 1500
- 1901
- 2000
- 2501
- 2700
- 3101
- 3599
- 3602
- 3604
- 3901

THIS MAP WAS PREPARED FOR  
ASSESSMENT PURPOSE ONLY



1" = 100'



41S 13W 05CC