

THIS MAP WAS PREPARED FOR ASSESSMENT PURPOSE ONLY

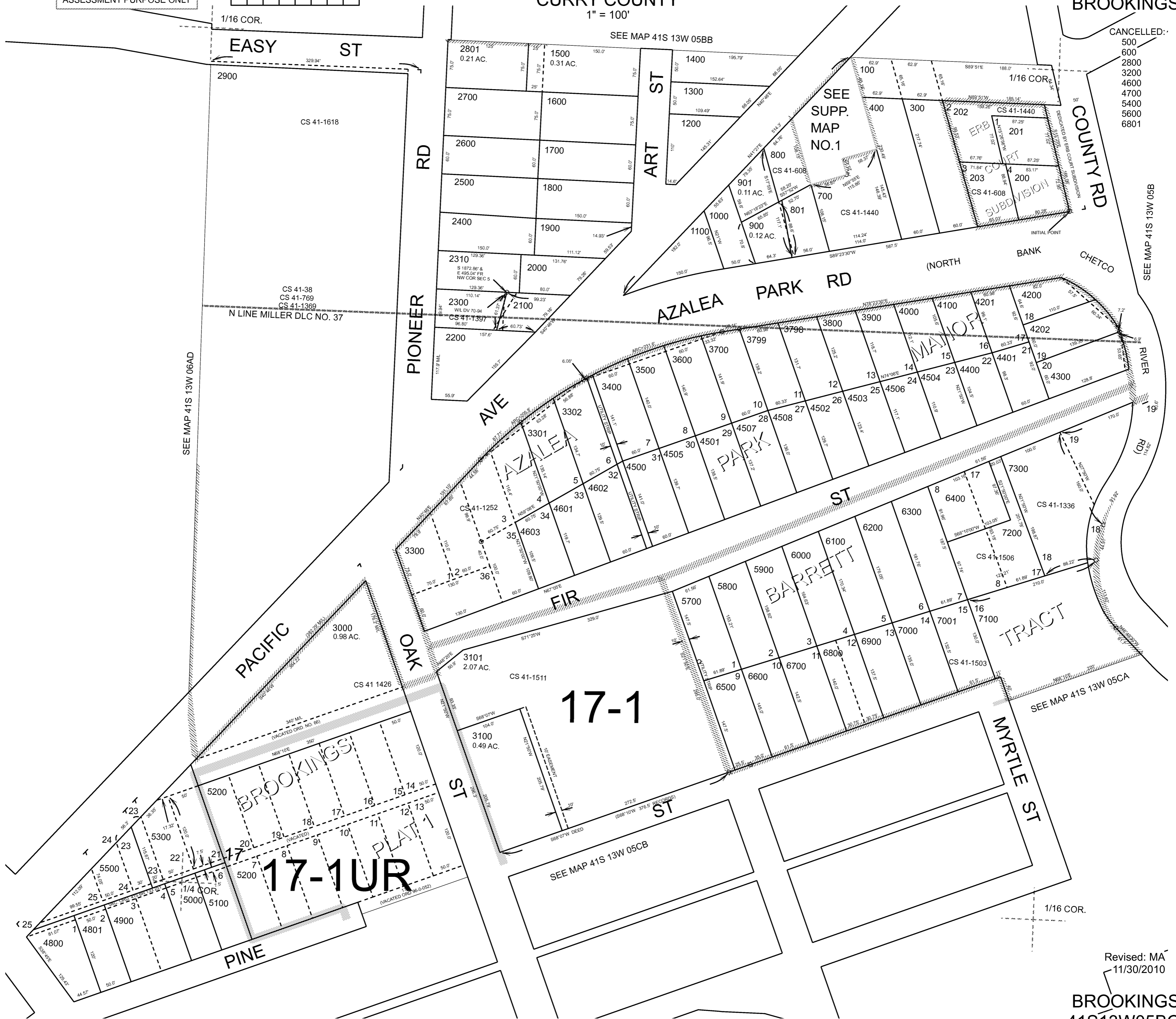
0 50 100 200 Feet

S.W. 1/4 N.W. 1/4 SEC. 5 T.41S. R.13W. W.M. CURRY COUNTY

1" = 100'

41S13W05BC BROOKINGS

CANCELLED:
500
600
2800
3200
4600
4700
5400
5600
6801



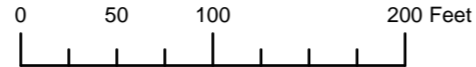
17-1

17-1UR

Revised: MA 11/30/2010

BROOKINGS 41S13W05BC

THIS MAP WAS PREPARED FOR ASSESSMENT PURPOSE ONLY

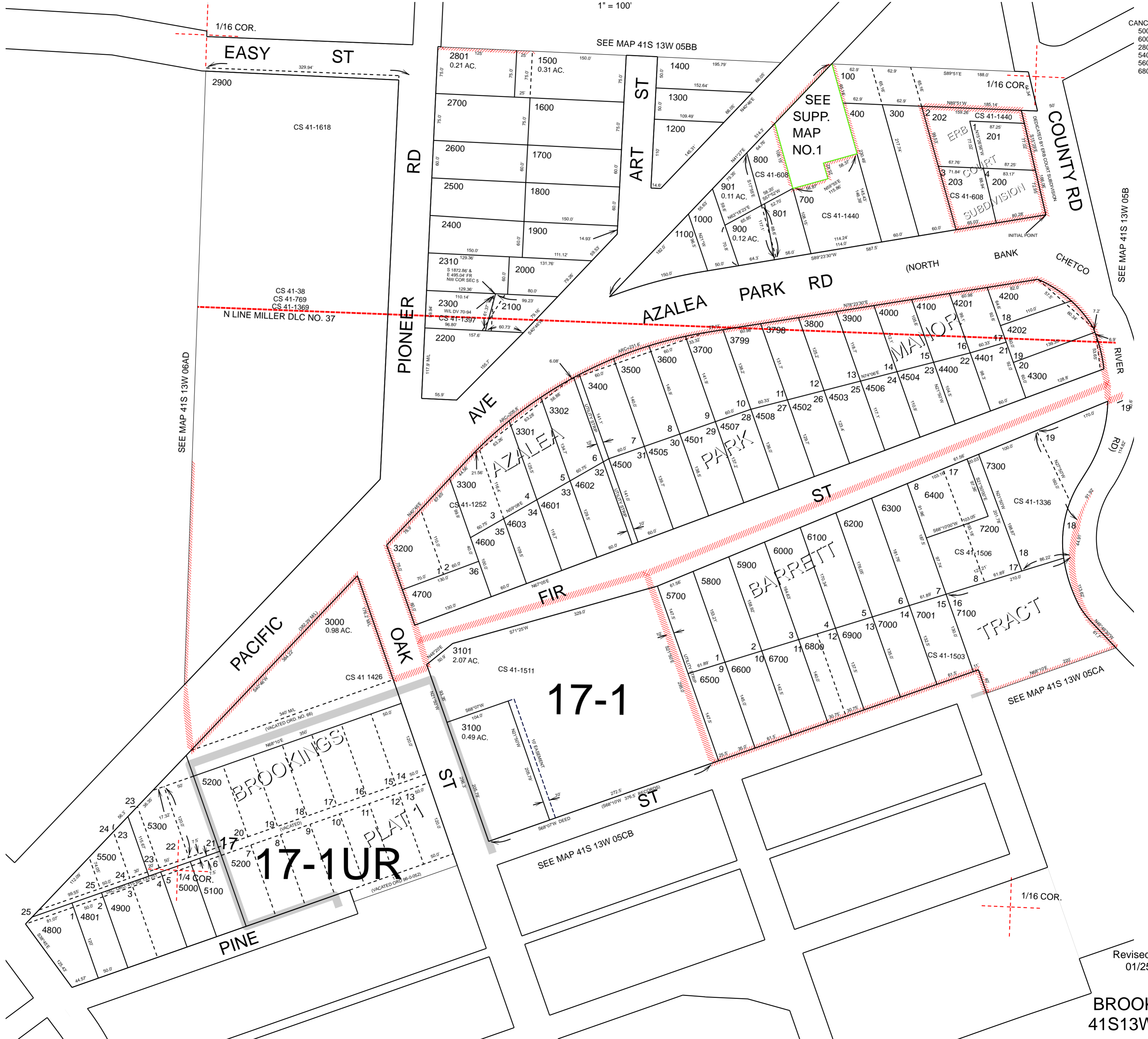


S.W.1/4 N.W.1/4 SEC.5 T.41S. R.13W. W.M. CURRY COUNTY

1" = 100'

41S13W05BC BROOKINGS

CANCELLED:
500
600
2800
5400
5600
6801



SEE MAP 41S 13W 05B

SEE MAP 41S 13W 06AD

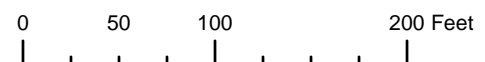
SEE MAP 41S 13W 05CB

SEE MAP 41S 13W 05CA

Revised: RAA
01/25/2010

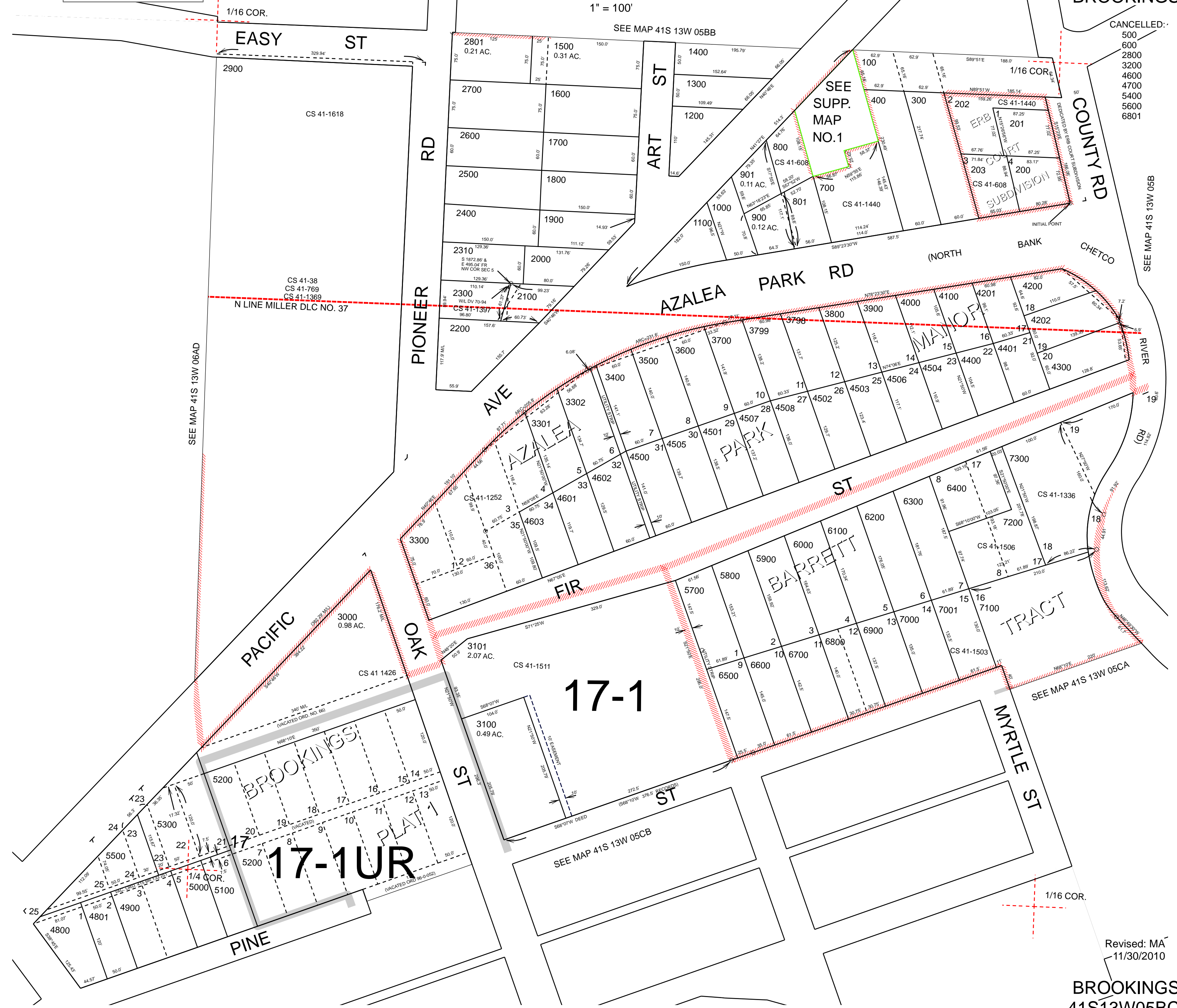
BROOKINGS
41S13W05BC

THIS MAP WAS PREPARED FOR ASSESSMENT PURPOSE ONLY



S.W.1/4 N.W.1/4 SEC.5 T.41S. R.13W. W.M.
CURRY COUNTY
1" = 100'

41S13W05BC
BROOKINGS



- CANCELLED:
- 500
 - 600
 - 2800
 - 3200
 - 4600
 - 4700
 - 5400
 - 5600
 - 6801

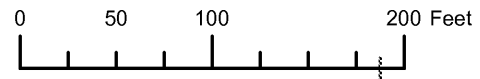
17-1

17-1UR

Revised: MA
11/30/2010

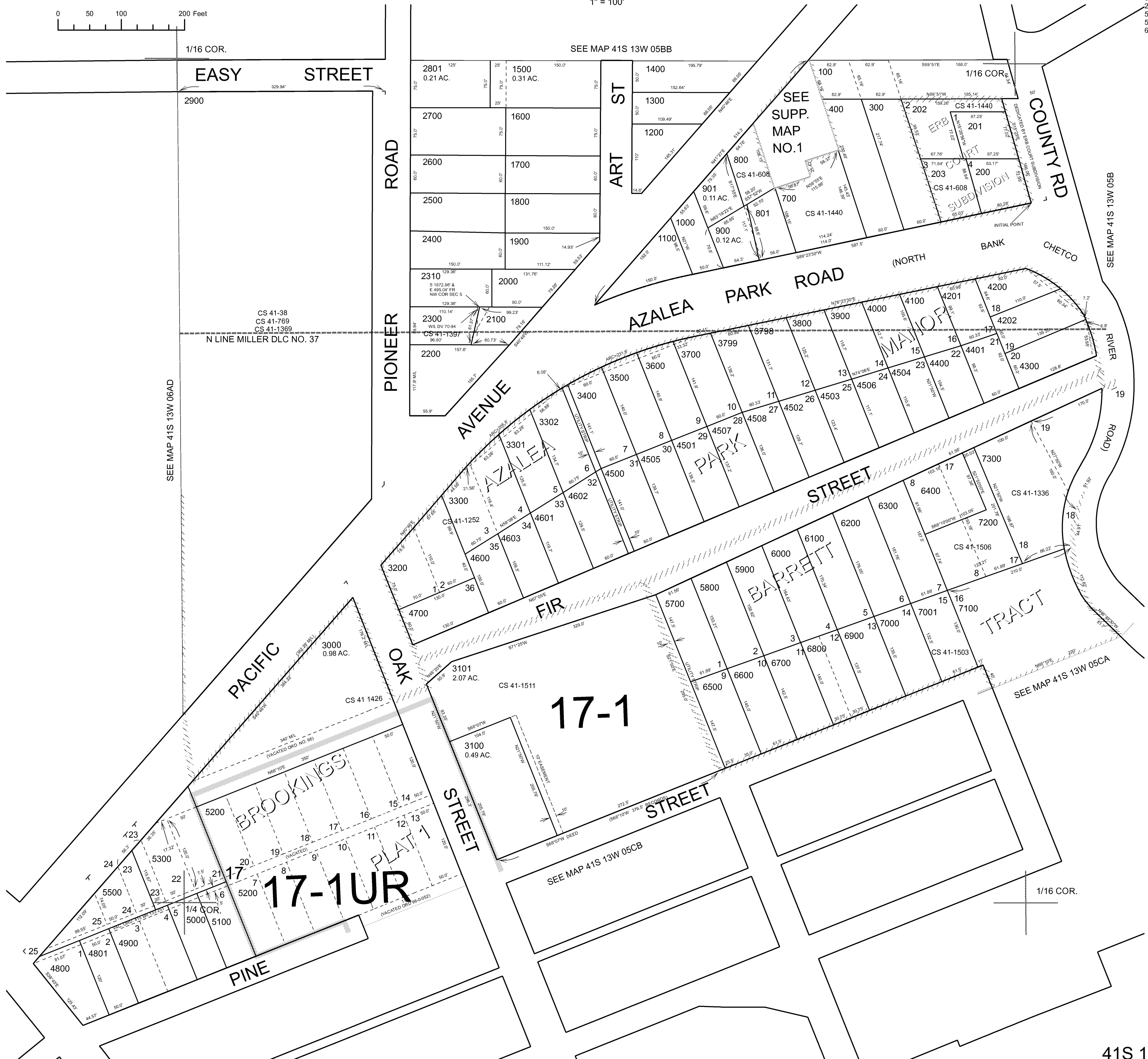
BROOKINGS
41S13W05BC

THIS MAP WAS PREPARED FOR ASSESSMENT PURPOSE ONLY



SW1/4 NW1/4 SECTION 05 T.41S. R.13W. W.M. CURRY COUNTY
1" = 100'

41S 13W 05BC
CANCELLED NO.
500
500
2800
5400
5600
6801



17-1

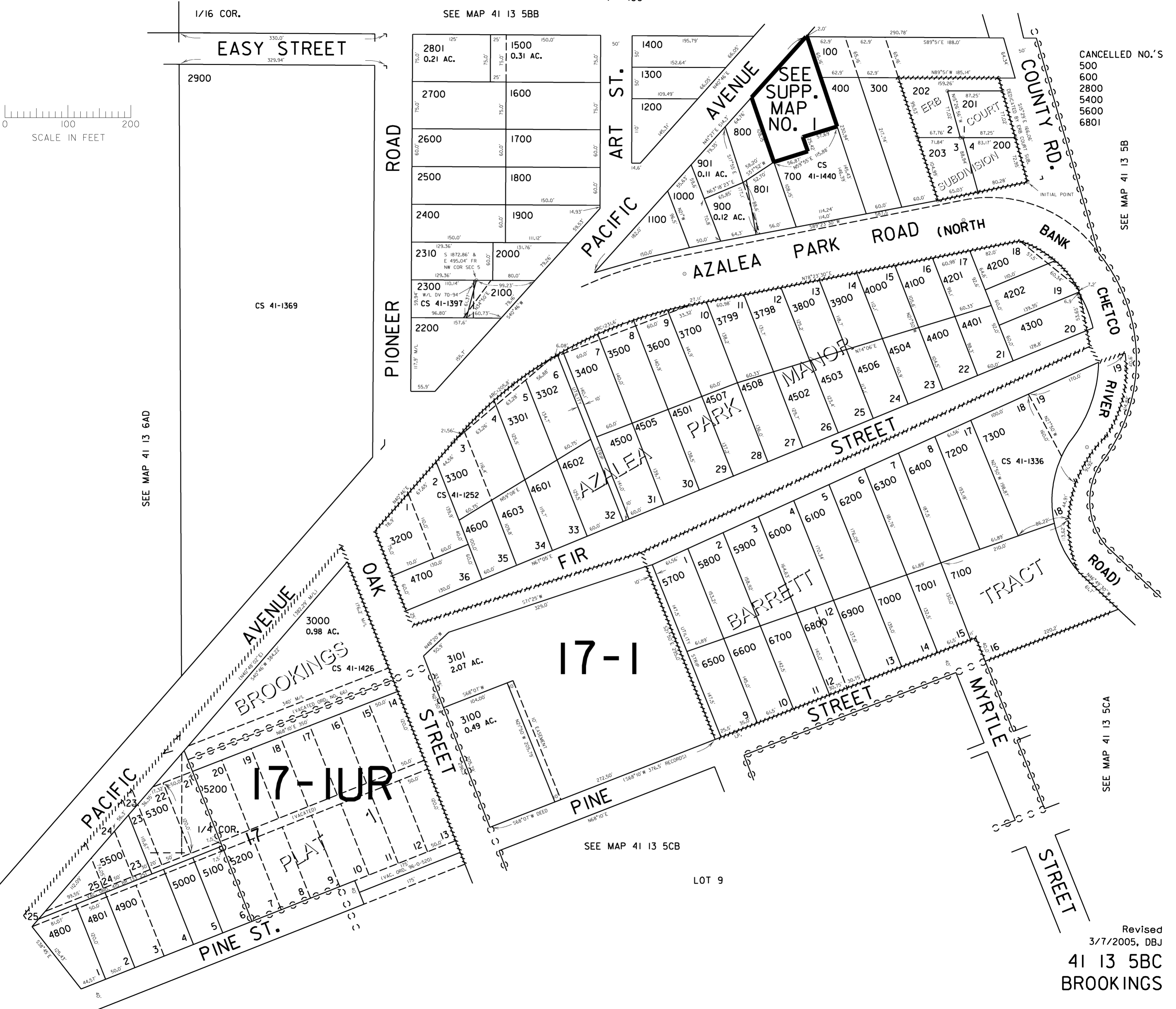
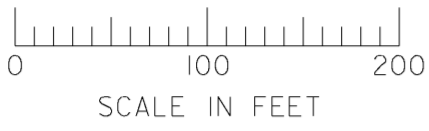
17-1UR

THIS MAP WAS PREPARED FOR
ASSESSMENT PURPOSE ONLY

SW1/4 NW1/4 SEC. 5 T.41S. R.13W. W.M.
CURRY COUNTY

41 13 5BC
BROOKINGS

1" = 100'



CANCELLED NO.'S
500
600
2800
5400
5600
6801

SEE MAP 41 13 5B

SEE MAP 41 13 5CA

SEE MAP 41 13 6AD

SEE MAP 41 13 5CB

LOT 9

Revised
3/7/2005, DBJ
41 13 5BC
BROOKINGS