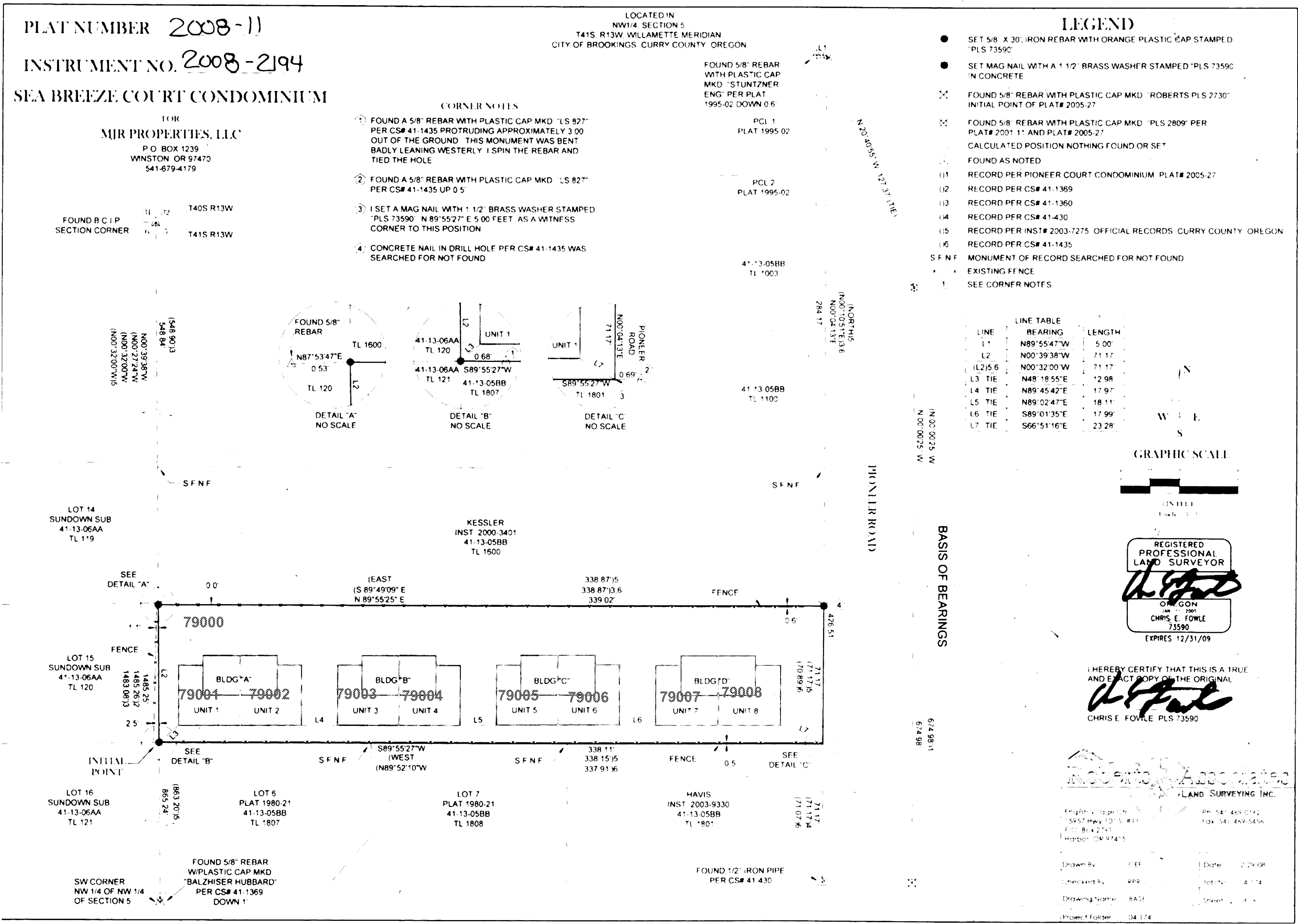


THIS MAP WAS PREPARED FOR ASSESSMENT PURPOSE ONLY

SUPPLEMENTAL MAP NO. 4
 NW 1/4 NW 1/4 SECTION 05 T41S R13W WM
 CURRY COUNTY

41S13W05BB
 SUPPLEMENTAL MAP NO. 4
 SHEET 2



THIS MAP WAS PREPARED FOR ASSESSMENT PURPOSE ONLY

SUPPLEMENTAL MAP NO. 4
 NW 1/4 NW 1/4 SECTION 05 T41S R13W WM
 CURRY COUNTY

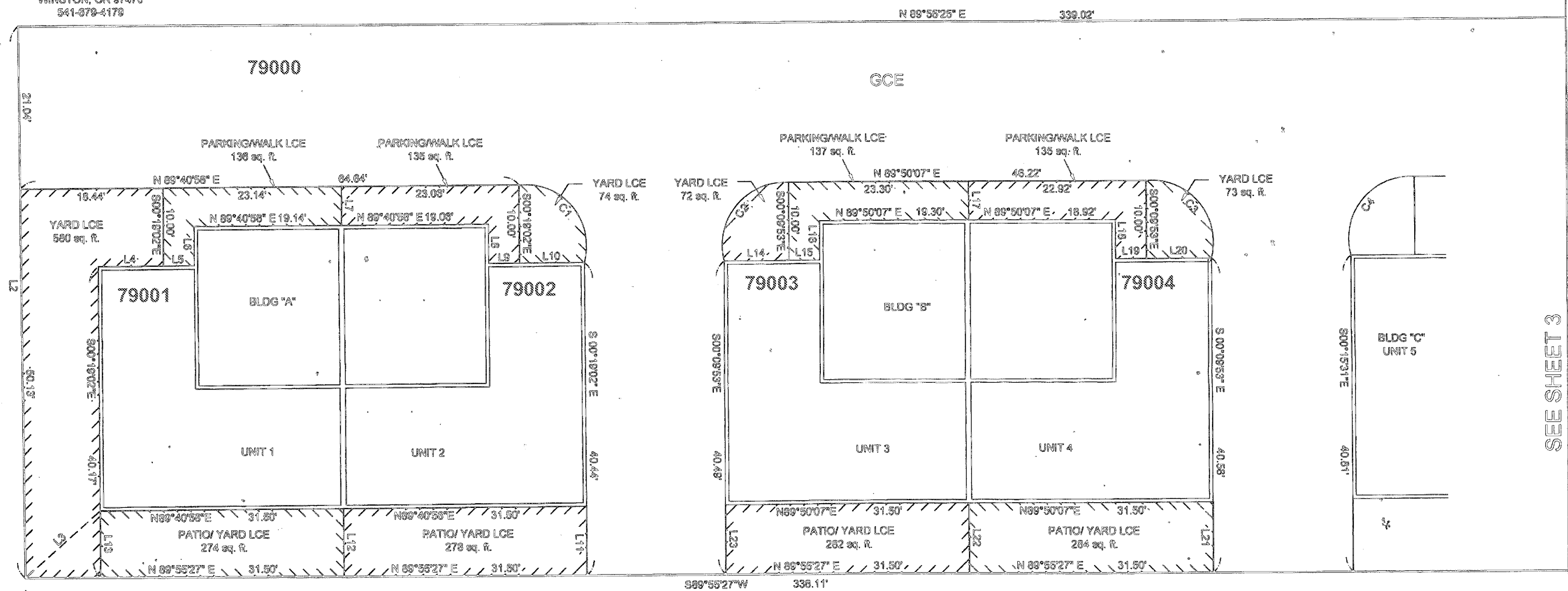
41S13W05BB
 SUPPLEMENTAL MAP NO. 4
 SHEET 3

PLAT NUMBER 2008-11
 INSTRUMENT NO. 2008-2194
 SEA BREEZE COURT CONDOMINIUM

LOCATED IN
 NW1/4, SECTION 5,
 T41S, R13W, WILLAMETTE MERIDIAN,
 CITY OF BROOKINGS, CURRY COUNTY, OREGON

LEGEND
 GCE - GENERAL COMMON ELEMENT
 LCE - LIMITED COMMON ELEMENT
 NOTE:
 AREAS OUTSIDE OF THE UNITS NOT LABELED AS LIMITED COMMON ELEMENT (LCE) SHALL BE CONSIDERED GENERAL COMMON ELEMENT (GCE).

FOR
 MJR PROPERTIES, LLC
 P.O. BOX 1239
 WINSTON, OR 97470
 541-978-4178



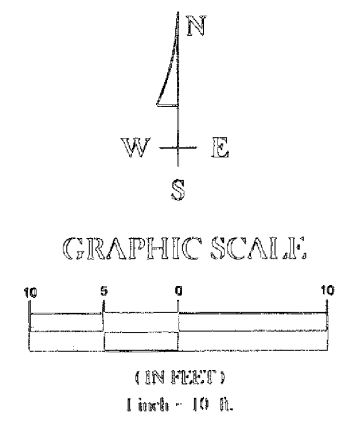
LINE TABLE

| LINE | BEARING | LENGTH |
|--------|-------------|--------|
| L2 | N00°59'58"W | 71.17' |
| L3 TIE | N68°10'55"E | 12.98' |
| L4 | N89°40'58"E | 8.40' |
| L5 | N89°40'58"E | 4.00' |
| L6 | N00°19'02"W | 5.00' |
| L7 | N00°19'02"W | 5.00' |
| L8 | N00°19'02"W | 5.00' |
| L9 | S89°40'58"W | 4.00' |
| L10 | S89°40'58"W | 8.40' |
| L11 | N00°19'02"W | 8.89' |
| L12 | N00°19'02"W | 8.76' |
| L13 | N00°19'02"W | 8.82' |
| L14 | N89°50'07"E | 8.39' |
| L15 | N89°50'07"E | 4.00' |
| L16 | N00°08'53"W | 5.00' |
| L17 | N00°08'53"W | 5.00' |
| L18 | N00°08'53"W | 5.00' |
| L19 | N89°50'07"E | 4.00' |
| L20 | N89°50'07"E | 8.39' |
| L21 | N00°08'53"W | 8.03' |
| L22 | N00°08'53"W | 8.89' |
| L23 | N00°08'53"W | 8.84' |

CURVE TABLE

| CURVE | DELTA | RADIUS | LENGTH | TANGENT | CHORD |
|-------|------------|--------|--------|---------|--------------------|
| C1 | 111°21'57" | 7.81' | 15.37' | 11.56' | R40°20'42"W 13.08' |
| C2 | 107°43'42" | 8.09' | 16.19' | 11.07' | S98°49'26"W 13.08' |
| C3 | 108°18'02" | 8.00' | 16.28' | 11.28' | R40°09'09"W 13.08' |
| C4 | 108°53'54" | 8.00' | 16.21' | 11.19' | S98°32'58"W 13.02' |

SEE SHEET 2 OF 6 FOR TIES BETWEEN BUILDINGS
 SEE SHEET 2 OF 6 FOR BASIS OF BEARINGS



REGISTERED PROFESSIONAL LAND SURVEYOR
 Chris E. Fowle
 OR.L.S.# 11,399
 CHRIS E. FOWLE
 73320
 EXPIRES 12/31/09
 I HEREBY CERTIFY THAT THIS IS A TRUE AND CORRECT COPY OF THE ORIGINAL
 CHRIS E. FOWLE, PLS 73590

Roberts & Associates
 LAND SURVEYING INC.
 English Village Cir.
 13957 Hwy 101 S. #11
 P.O. Box 2791
 Harbor, OR 97415
 Ph: 541-469-0162
 Fax: 541-469-5456

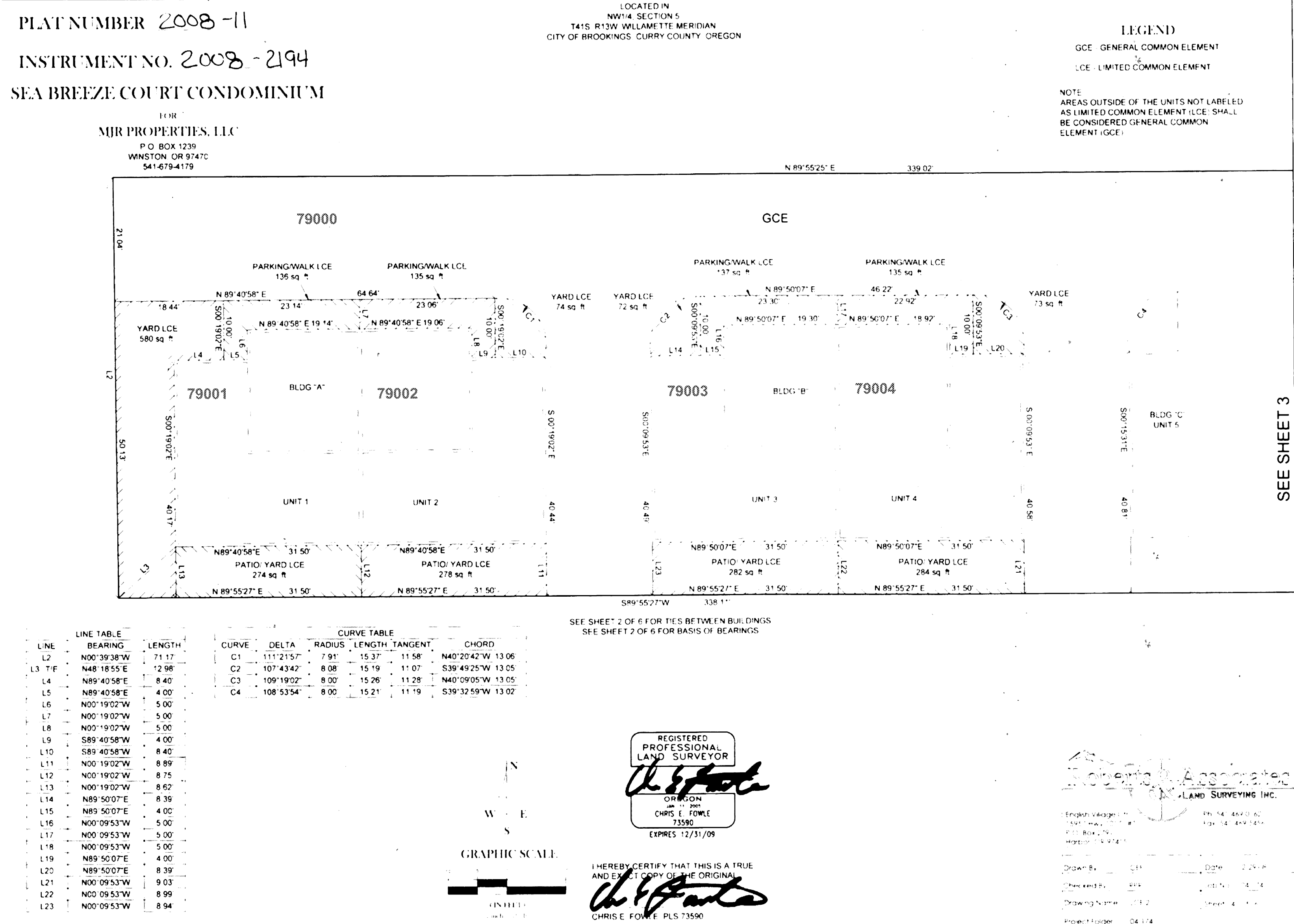
| | |
|------------------------|----------------|
| Drawn By: CEF | Date: 2-29-08 |
| Checked By: RPR | Job No. 04-174 |
| Drawing Name: LCE 2 | Sheet 4 of 6 |
| Project Folder: 04-174 | |

SEE SHEET 3

THIS MAP WAS PREPARED FOR ASSESSMENT PURPOSE ONLY

SUPPLEMENTAL MAP NO. 4
 NW 1/4 NW 1/4 SECTION 05 T41S R13W WM
 CURRY COUNTY

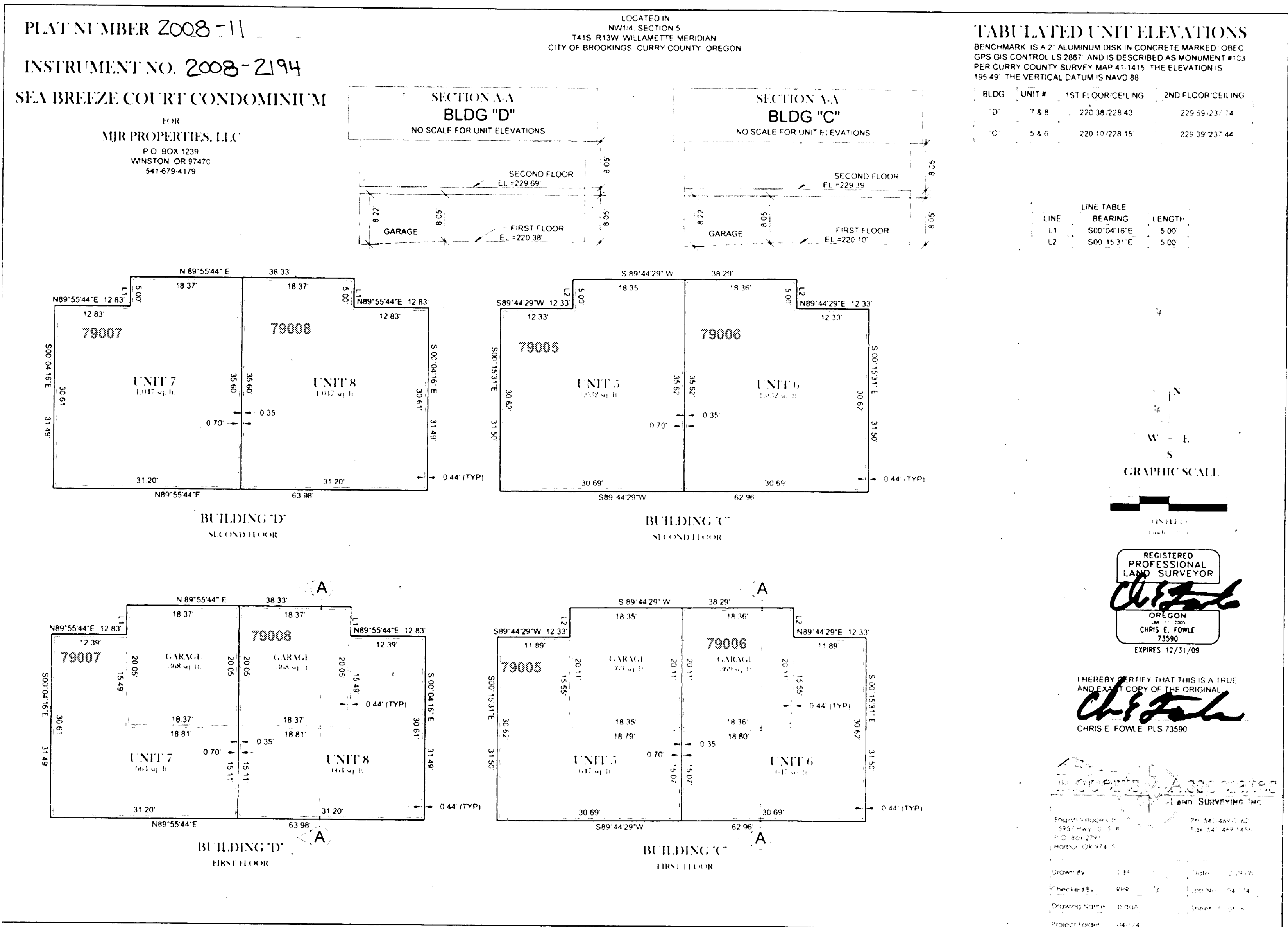
41S13W05BB
 SUPPLEMENTAL MAP NO. 4
 SHEET 4



THIS MAP WAS PREPARED FOR
ASSESSMENT PURPOSE ONLY

SUPPLEMENTAL MAP NO. 4
NW 1/4 NW 1/4 SECTION 05 T41S R13W WM
CURRY COUNTY

41S13W05BB
SUPPLEMENTAL MAP NO. 4
SHEET 5



Revised: 9C
8/21/2008

41S13W05BB
SUPPLEMENTAL MAP NO. 4
SHEET 5

THIS MAP WAS PREPARED FOR ASSESSMENT PURPOSE ONLY

SUPPLEMENTAL MAP NO. 4
 NW 1/4 NW 1/4 SECTION 05 T41S R13W WM
 CURRY COUNTY

PLAT NUMBER 2008-11

INSTRUMENT NO. 2008-2194

EA BREEZE COURT CONDOMINIUM

FOR
 MJR PROPERTIES, LLC
 P.O. BOX 1239
 WINSTON, OR 97470
 541-679-4179

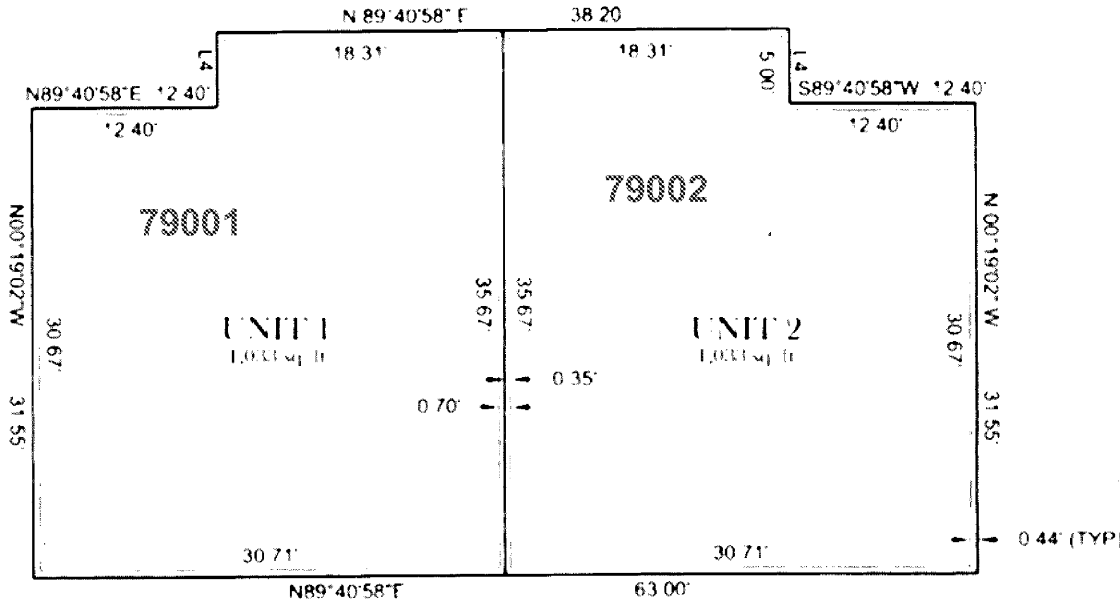
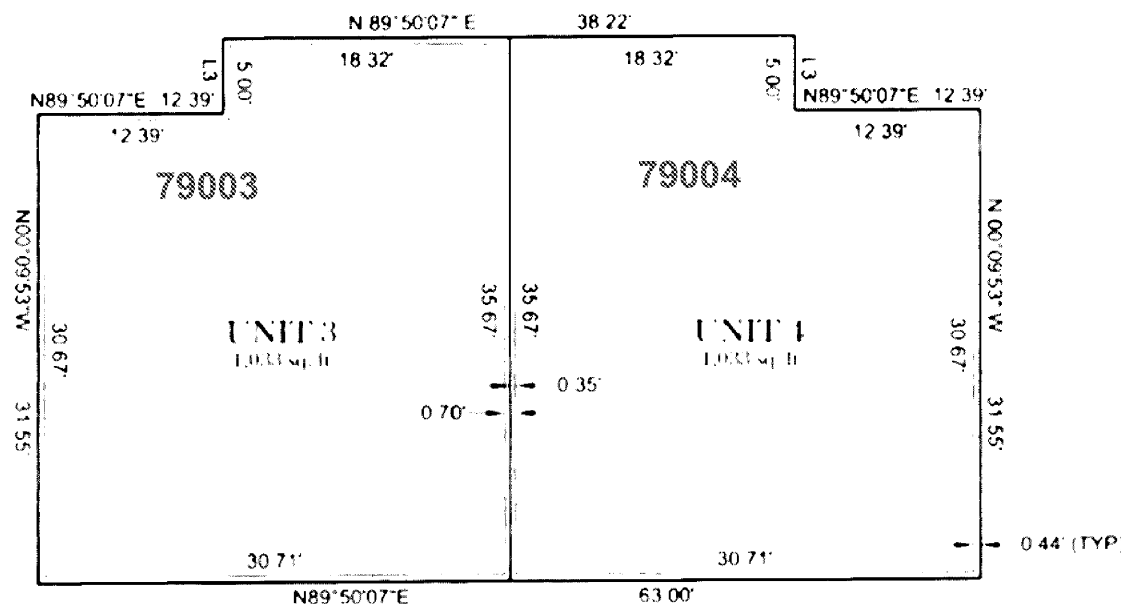
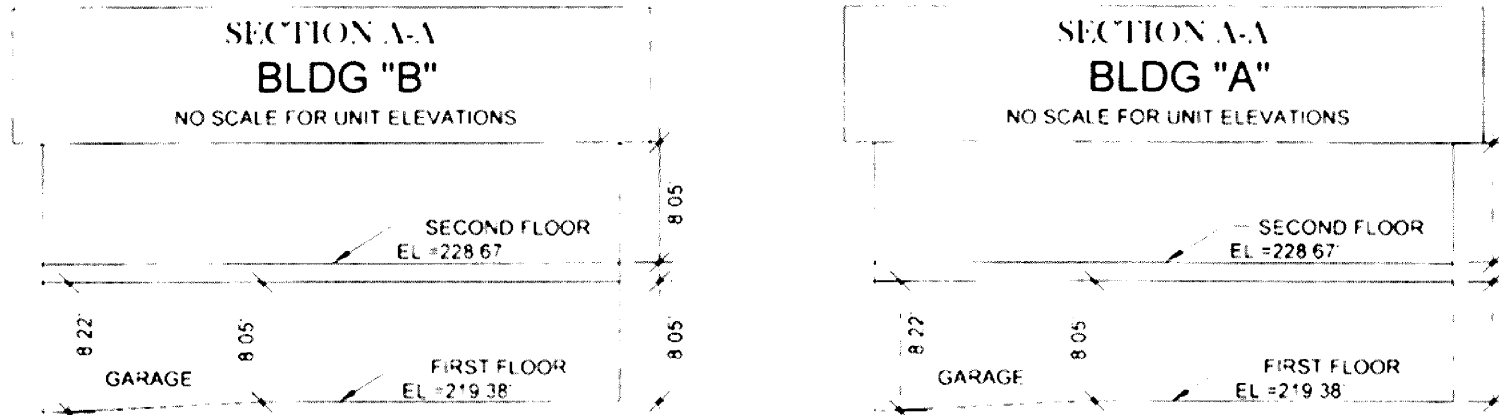
LOCATED IN
 NW 1/4 SECTION 5
 T41S, R13W, WILLAMETTE MERIDIAN
 CITY OF BROOKINGS, CURRY COUNTY, OREGON

TABULATED UNIT ELEVATIONS

BENCHMARK IS A 2" ALUMINUM DISK IN CONCRETE MARKED "OBEC GPS GIS CONTROL LS 2867" AND IS DESCRIBED AS MONUMENT #103 PER CURRY COUNTY SURVEY MAP 41-1415. THE ELEVATION IS 195.49'. THE VERTICAL DATUM IS NAVD 88.

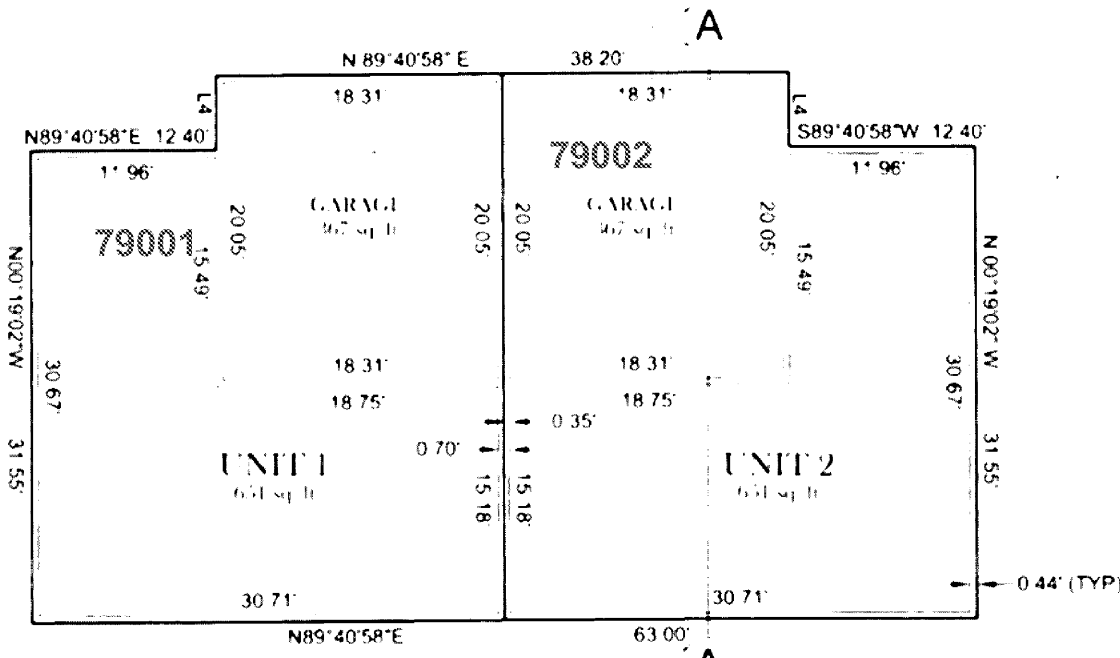
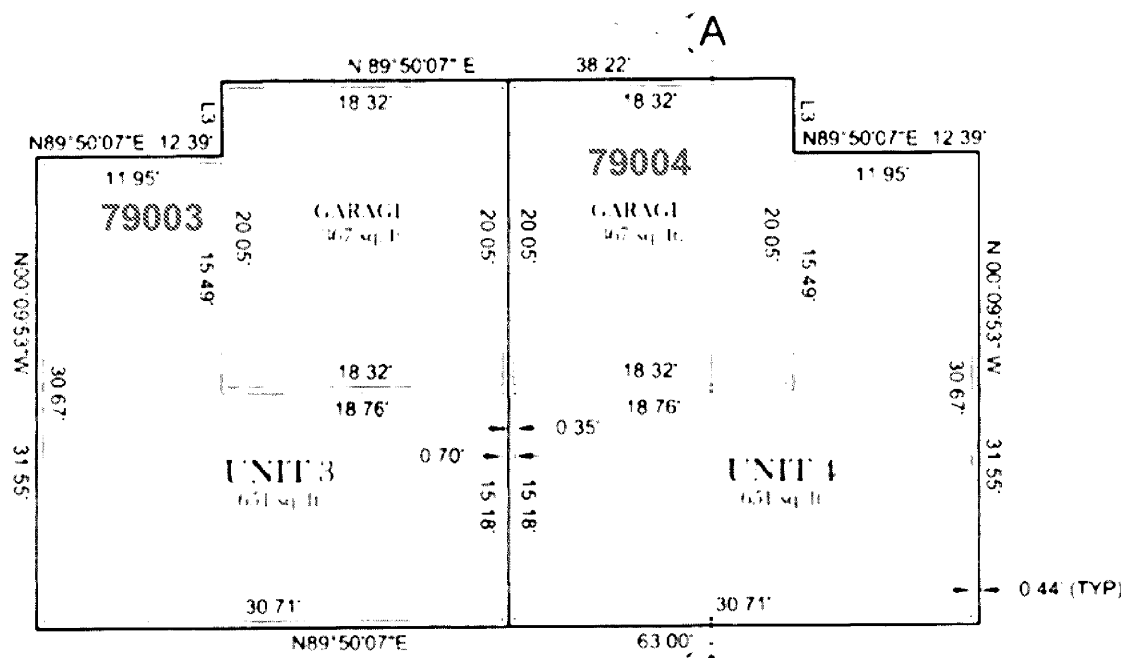
| BLDG | UNIT # | 1ST FLOOR/CEILING | 2ND FLOOR/CEILING |
|------|--------|-------------------|-------------------|
| B | 3 & 4 | 219.38/227.43 | 228.67/236.72 |
| A | 1 & 2 | 219.38/227.43 | 228.67/236.72 |

| LINE | BEARING | LENGTH |
|------|-------------|--------|
| L3 | N00°09'53"W | 5.00 |
| L4 | N00°19'02"W | 5.00 |



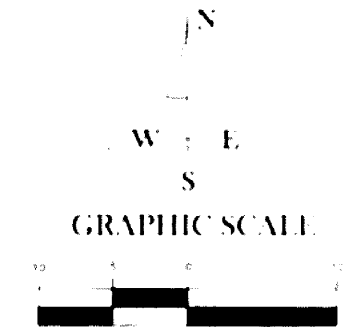
BUILDING 'B' SECOND FLOOR

BUILDING 'A' SECOND FLOOR



BUILDING 'B' FIRST FLOOR

BUILDING 'A' FIRST FLOOR



REGISTERED PROFESSIONAL LAND SURVEYOR
Chris E. Fowle
 OREGON
 JAN 13 2005
 CHRIS E. FOWLE
 73590
 EXPIRES 12/31/09

I HEREBY CERTIFY THAT THIS IS A TRUE AND EXACT COPY OF THE ORIGINAL
Chris E. Fowle
 CHRIS E. FOWLE PLS 73590

Roberts & Associates
 LAND SURVEYING INC.

Engleville, Oregon
 15957 Hwy 10, S.W.
 P.O. Box 2791
 Marion, OR 97415
 Phone: 541-449-0142
 Fax: 541-449-5456
 Drawn By: [Signature] Date: 2/29/08
 Checked By: [Signature] Job No: 04-114
 Drawing Name: [Signature] Sheet: 6 of 7
 Project Folder: 04-114