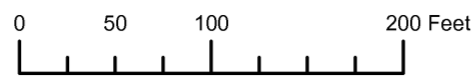


THIS MAP WAS PREPARED FOR ASSESSMENT PURPOSE ONLY



S.E. 1/4 N.E. 1/4 SEC. 5 T. 41S. R. 13W. W.M. CURRY COUNTY

1" = 100'

41S13W05AD BROOKINGS

- CANCELLED:
- 100
- 200
- 300
- 400
- 501
- 803
- 804
- 901
- 902
- 1001U1
- 1001U2
- 1101
- 1102
- 1103
- 1701
- 1800U1
- 1800U2
- 2101U1
- 2101U2
- 3103
- 3201
- 3300
- 4000
- 4001



SEE MAP 41S 13W 05A

SEE MAP 41S 13W 04B

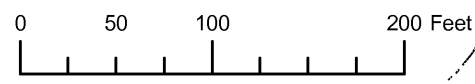
Revised: RAA 2/25/2009

BROOKINGS 41S13W05AD

SE1/4 NE1/4 SECTION 05 T.41S. R.13W. W.M.  
CURRY COUNTY

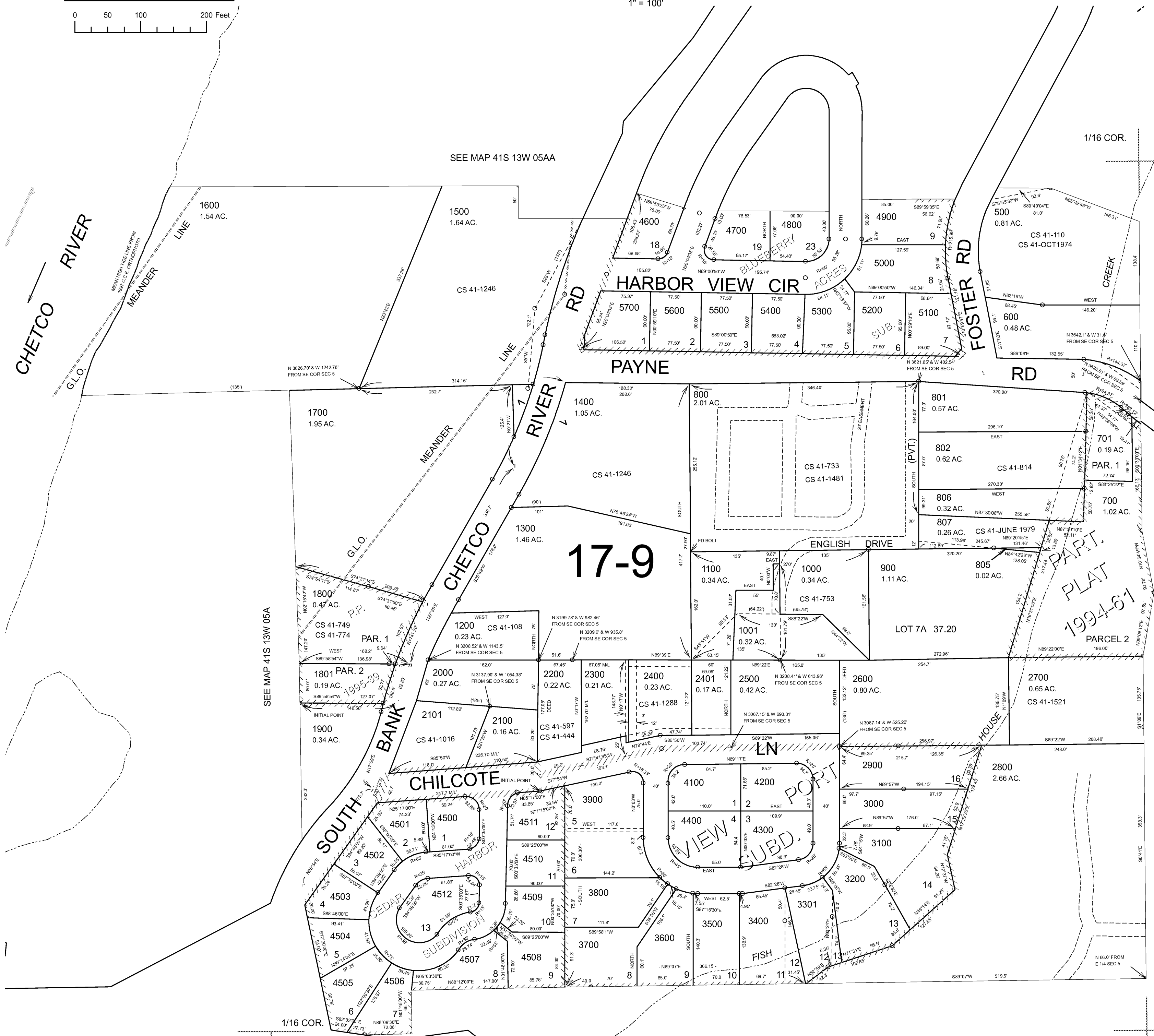
41S 13W 05AD

THIS MAP WAS PREPARED FOR  
ASSESSMENT PURPOSE ONLY



1" = 100'

- CANCELLED NO.
- 100
- 200
- 300
- 400
- 501
- 803
- 804
- 808
- 901
- 902
- 1001U1
- 1001U2
- 1101
- 1102
- 1103
- 1701
- 1800U1
- 1800U2
- 2101U1
- 2101U2
- 3201
- 3300
- 4000
- 4001



17-9

PART PLAT 1994-61

SEE MAP 41S 13W 05A

SEE MAP 41S 13W 04B

SEE MAP 41S 13W 05DA

1/4 COR.

Revised RAA  
6/26/2006

41S 13W 05AD

SE1/4 NE1/4 SECTION 05 T.41S. R.13W. W.M.  
CURRY COUNTY

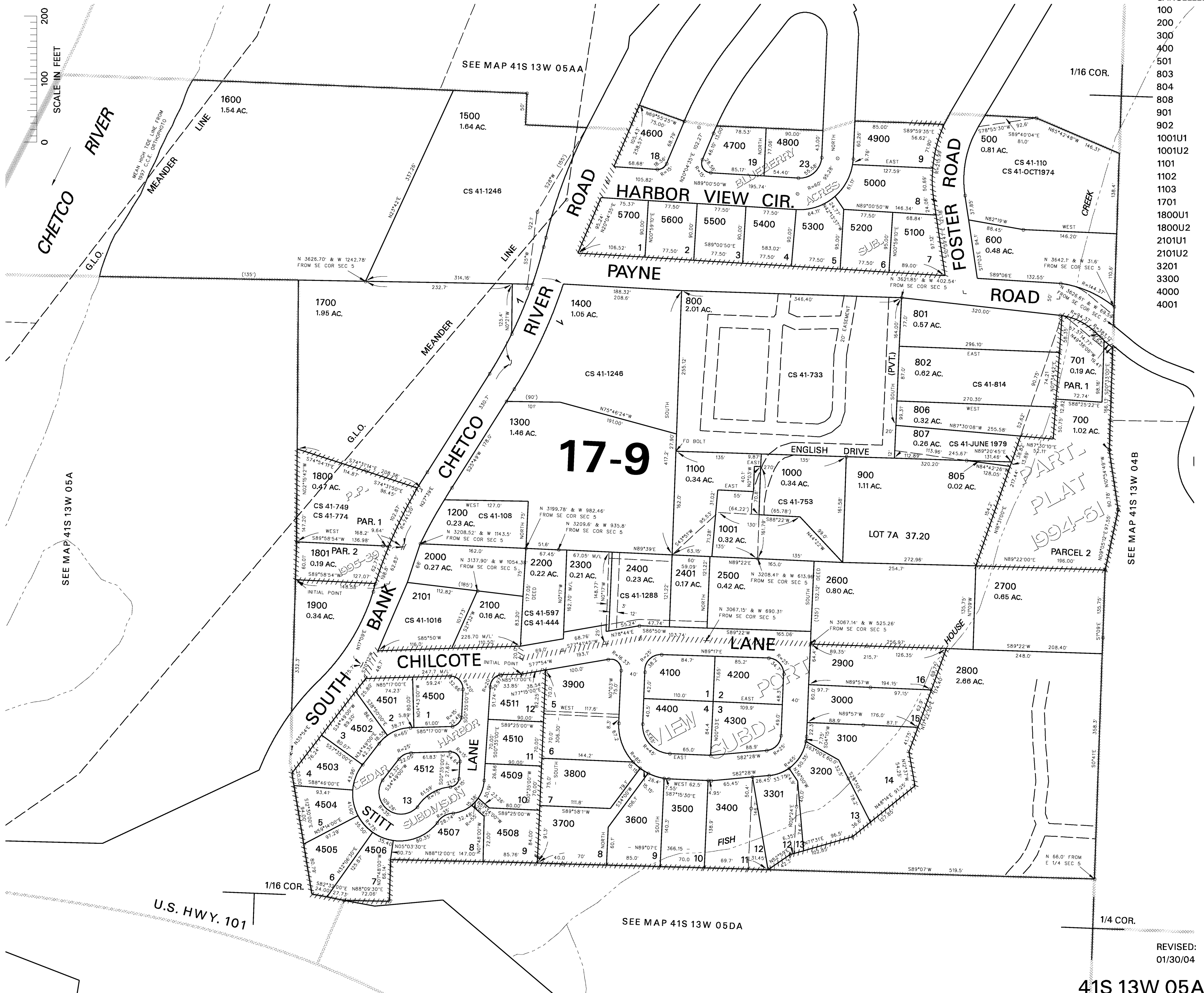
THIS MAP WAS PREPARED FOR  
ASSESSMENT PURPOSE ONLY

1"=100'

41S 13W 05AD

CANCELLED NO.

- 100
- 200
- 300
- 400
- 501
- 803
- 804
- 808
- 901
- 902
- 1001U1
- 1001U2
- 1101
- 1102
- 1103
- 1701
- 1800U1
- 1800U2
- 2101U1
- 2101U2
- 3201
- 3300
- 4000
- 4001



SEE MAP 41S 13W 04B

1/4 COR.

REVISED: DJ  
01/30/04

41S 13W 05AD