

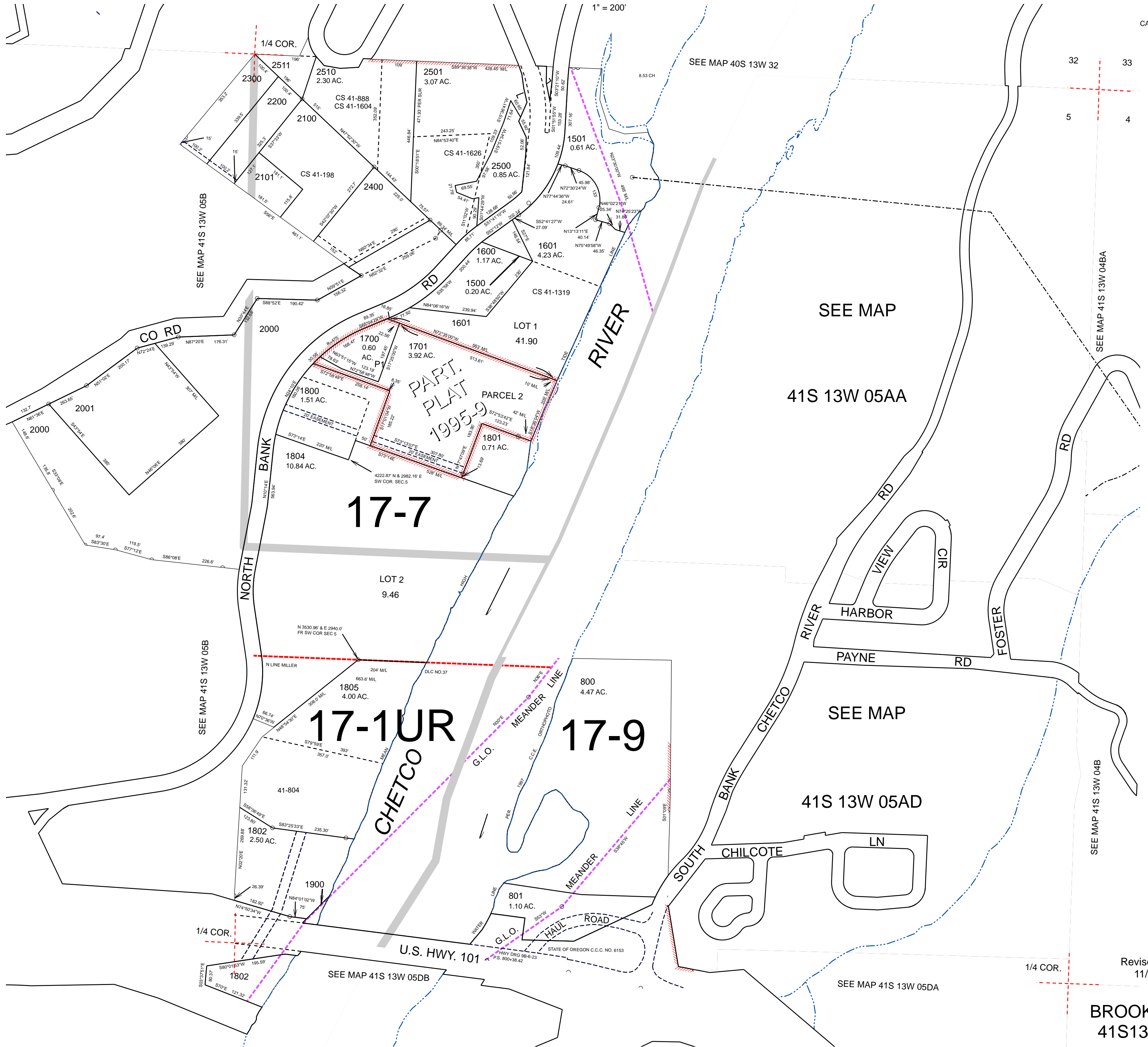
THIS MAP WAS PREPARED FOR ASSESSMENT PURPOSE ONLY

0 100 200 400 Feet

N.E. 1/4 SEC.5 T.41S. R.13W. W.M. CURRY COUNTY

41S13W05A BROOKINGS

1" = 200'



- CANCELLED:
- 100 THRU
- 118
- 200 THRU
- 700
- 899
- 900 THRU
- 925
- 1000 THRU
- 1401
- 1803
- 1804U1
- 1804U2
- 1806
- 2520
- 2600
- 2700
- 2800

32 33

5 4

SEE MAP 41S 13W 04BA

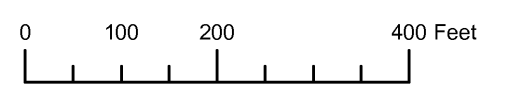
SEE MAP 41S 13W 04B

1/4 COR.

Revised: RAA 11/30/2009

BROOKINGS 41S13W05A

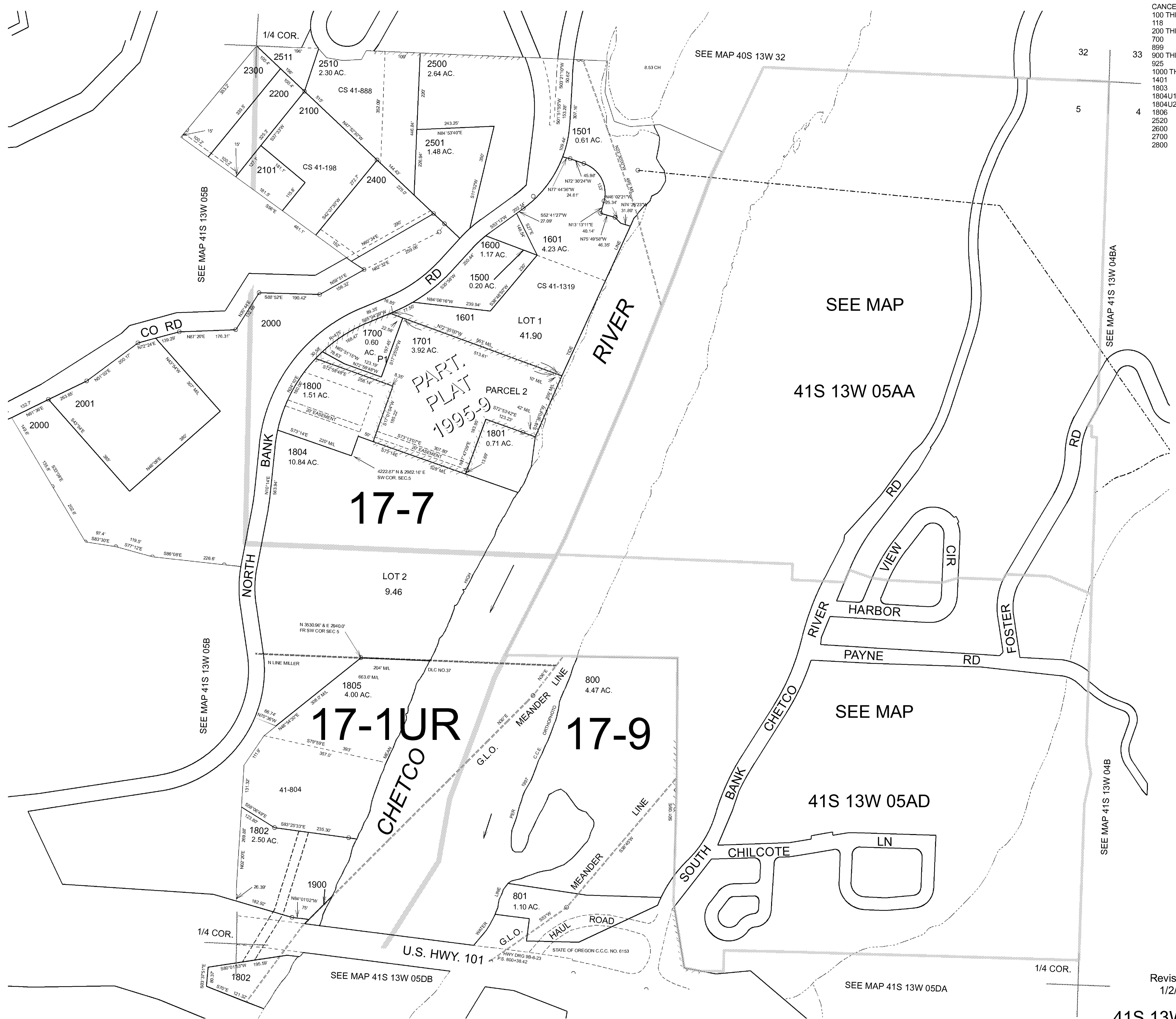
THIS MAP WAS PREPARED FOR ASSESSMENT PURPOSE ONLY



NE1/4 SECTION 05 T.41S. R.13W. W.M. CURRY COUNTY  
1" = 200'

41S 13W 05A & INDEX

- CANCELLED NO.
- 100 THRU
- 118
- 200 THRU
- 700
- 899
- 900 THRU
- 925
- 1000 THRU
- 1401
- 1803
- 1804U1
- 1804U2
- 1806
- 2520
- 2600
- 2700
- 2800



SEE MAP 41S 13W 05DA

Revised RAA 1/2/2007

41S 13W 05A & INDEX

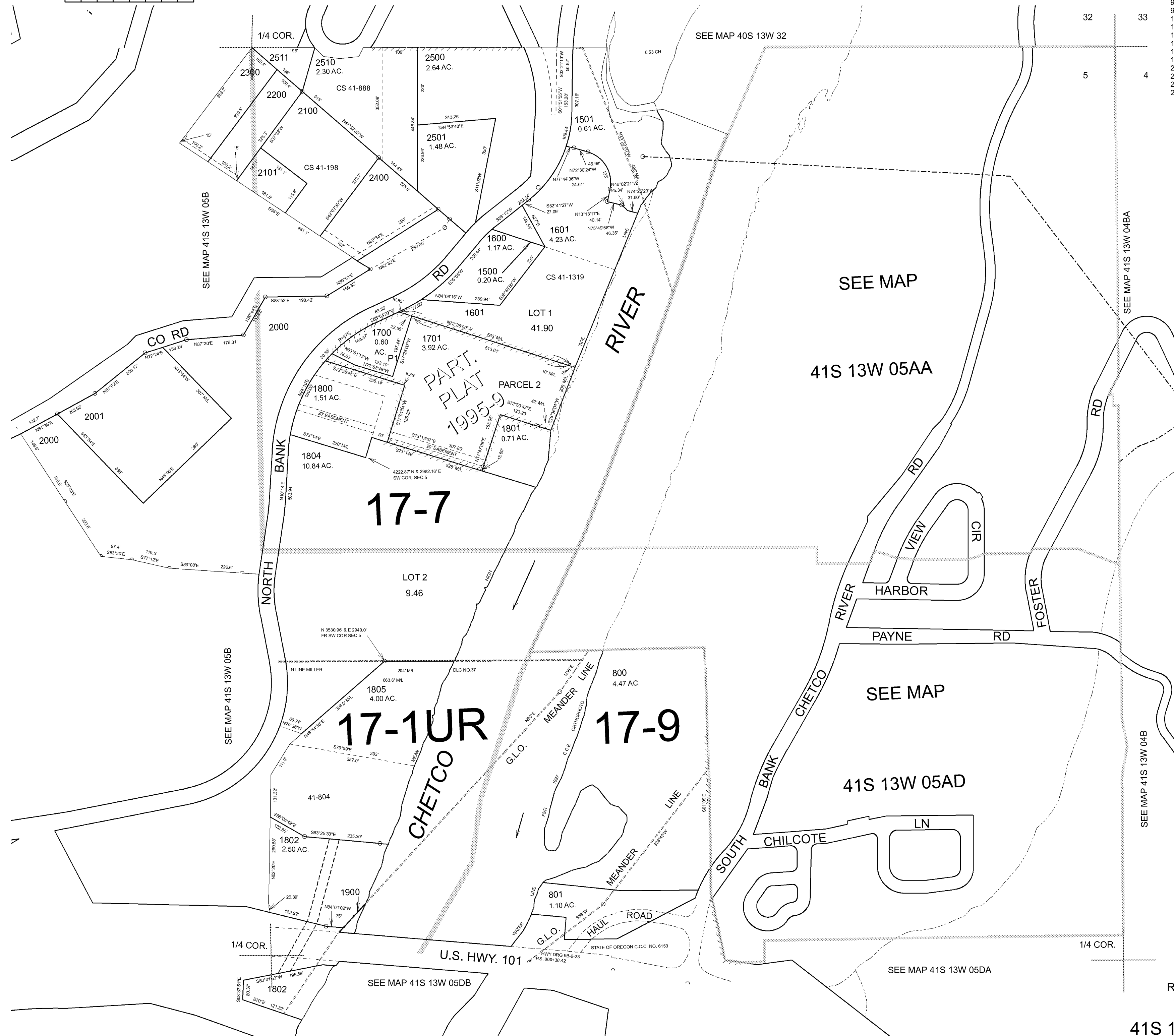
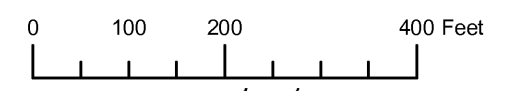
NE1/4 SECTION 05 T.41S. R.13W. W.M.  
CURRY COUNTY

1" = 200'

41S 13W 05A

CANCELLED NO.  
100 THRU  
119  
200 THRU  
700  
899  
900 THRU  
925  
1000 THRU  
1401  
1803  
1804U1  
1804U2  
1806  
2520  
2600  
2700  
2800

THIS MAP WAS PREPARED FOR  
ASSESSMENT PURPOSE ONLY



32 33

5 4

SEE MAP 41S 13W 04BA

SEE MAP 41S 13W 04B

1/4 COR.

SEE MAP 41S 13W 05DA

SEE MAP 41S 13W 05DB

Revised RAA  
6/13/2006

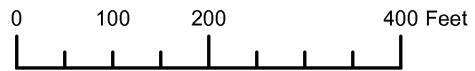
41S 13W 05A



NE1/4 SECTION 05 T.41S. R.13W. W.M.  
CURRY COUNTY

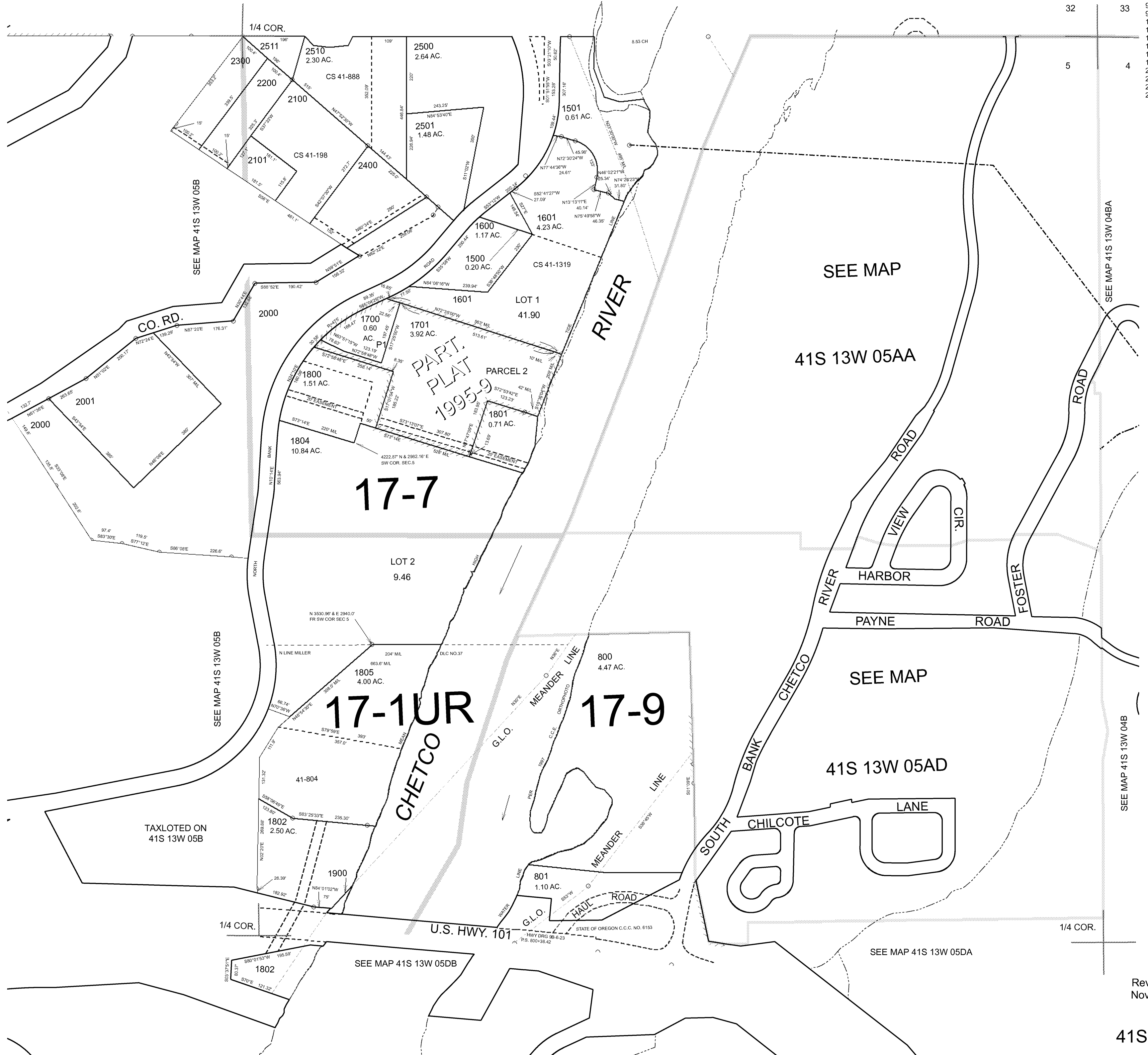
41S 13W 05A

THIS MAP WAS PREPARED FOR  
ASSESSMENT PURPOSE ONLY



1" = 200'  
SEE MAP 40S 13W 32

CANCELLED NO.  
100 THRU  
118  
200 THRU  
700  
899  
900 THRU  
925  
1401  
1803  
1804U1  
1804U2  
1806  
2520  
2600  
2700  
2800



32 33

5 4

SEE MAP 41S 13W 04BA

SEE MAP 41S 13W 04B

1/4 COR.

SEE MAP 41S 13W 05DA

Revised DBJ  
Nov 25, 2005

41S 13W 05A

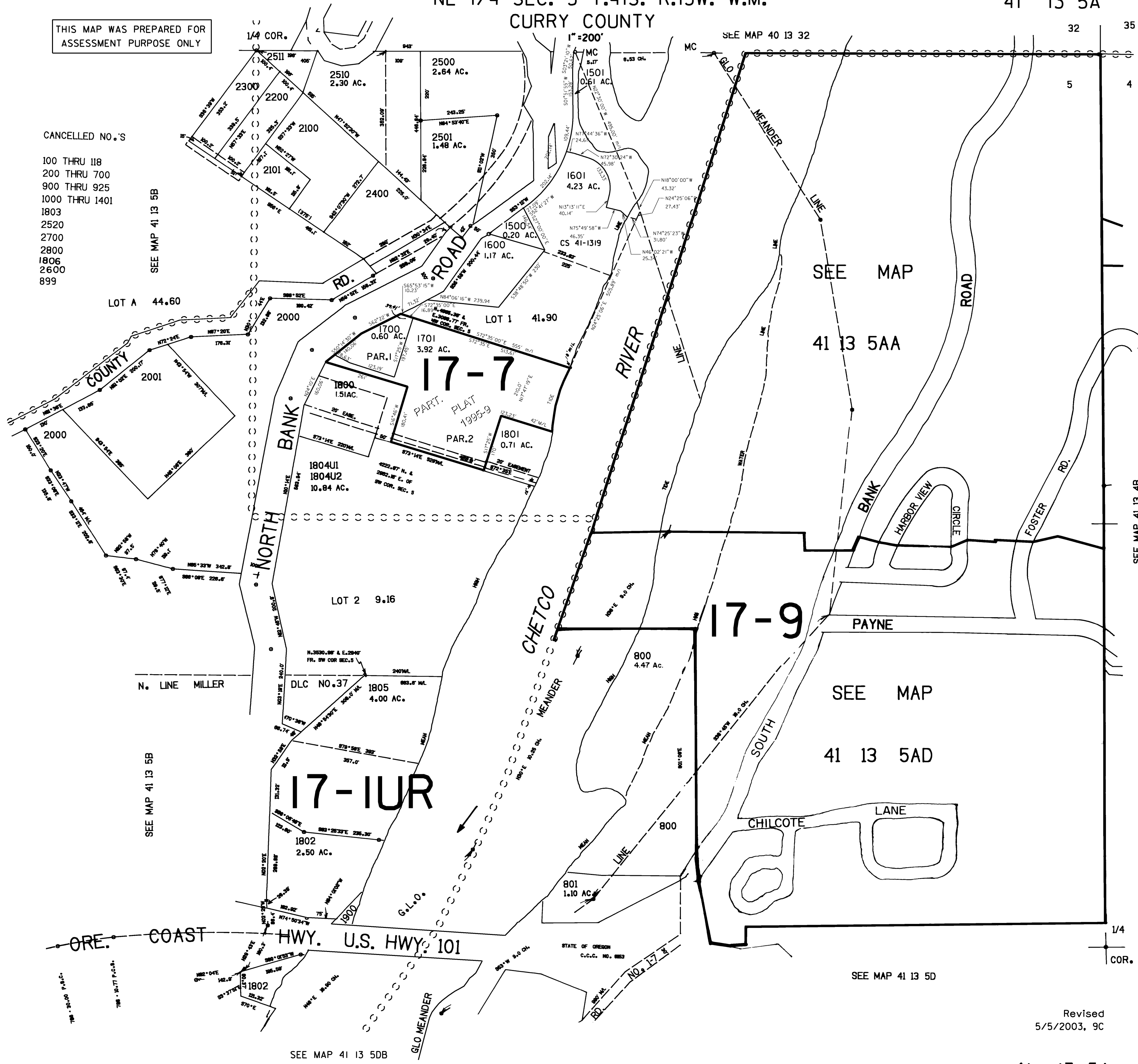
NE 1/4 SEC. 5 T.41S. R.13W. W.M.  
CURRY COUNTY

41 13 5A

THIS MAP WAS PREPARED FOR  
ASSESSMENT PURPOSE ONLY

CANCELLED NO.'S

- 100 THRU 118
- 200 THRU 700
- 900 THRU 925
- 1000 THRU 1401
- 1803
- 2520
- 2700
- 2800
- 1806
- 2600
- 899



SEE MAP 41 13 5B

LOT A 44.60

SEE MAP 41 13 5B

SEE MAP 41 13 5DB

SEE MAP 40 13 32

SEE MAP

41 13 5AA

SEE MAP

41 13 5AD

SEE MAP 41 13 5D

Revised  
5/5/2003, 9C

41 13 5A