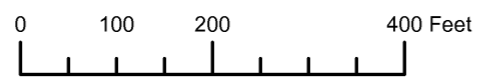


THIS MAP WAS PREPARED FOR ASSESSMENT PURPOSE ONLY



S.E.1/4 SEC.6 T.41S. R.12W. W.M. CURRY COUNTY

41S12W06D

CANCELLED: 201



27-3

Revised: RAA 10/6/2009

41S12W06D

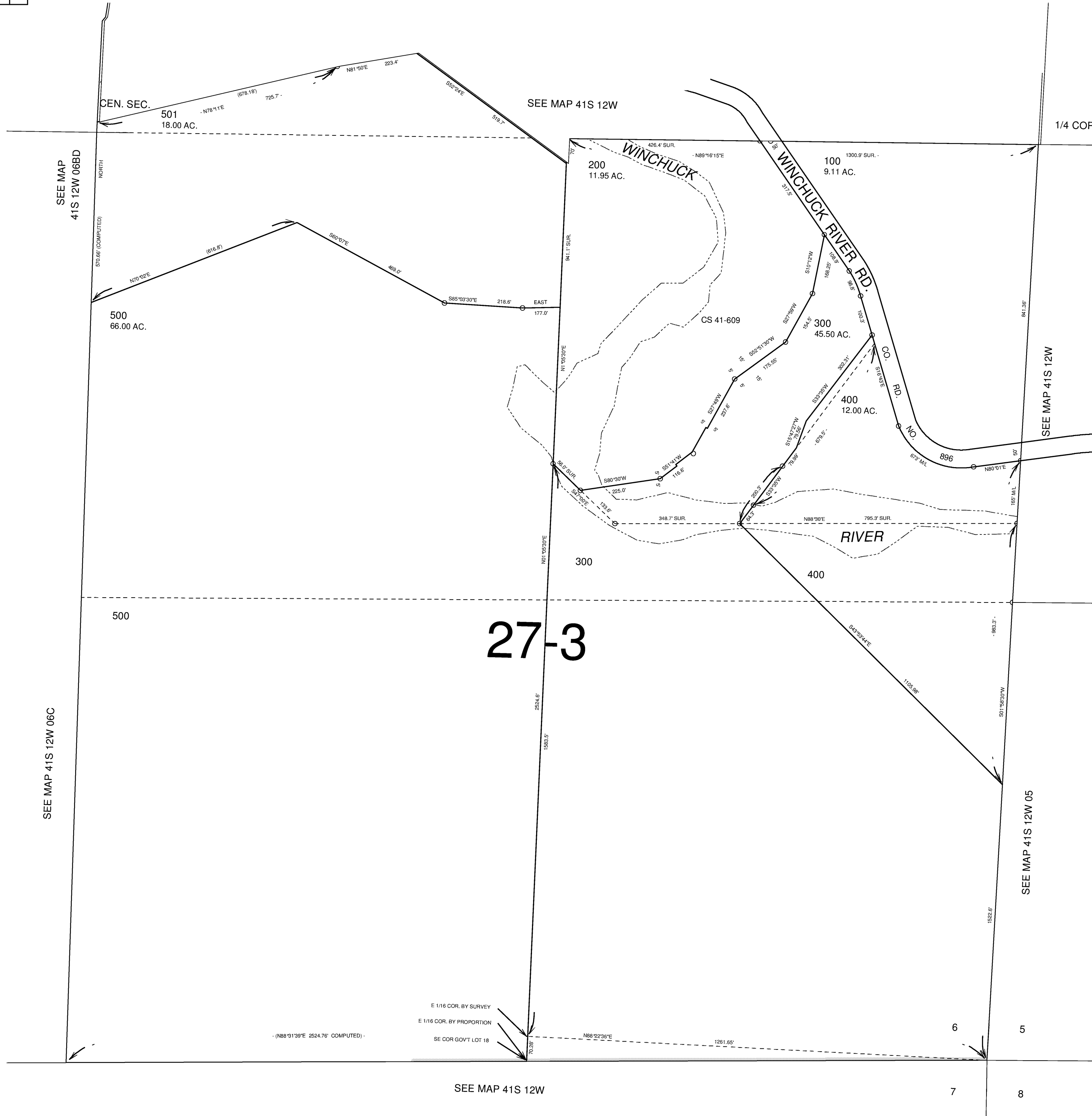
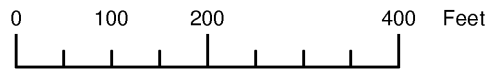
THIS MAP WAS PREPARED FOR ASSESSMENT PURPOSE ONLY

# SE1/4 SE1/4 SECTION 06 T.41S. R.12W. W.M. CURRY COUNTY

1" = 200'

41S 12W 06D

CANCELLED No.  
201



# 27-3

Revised RAA  
6/30/2004  
41S 12W 06D