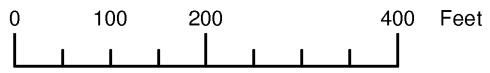


THIS MAP WAS PREPARED FOR ASSESSMENT PURPOSE ONLY

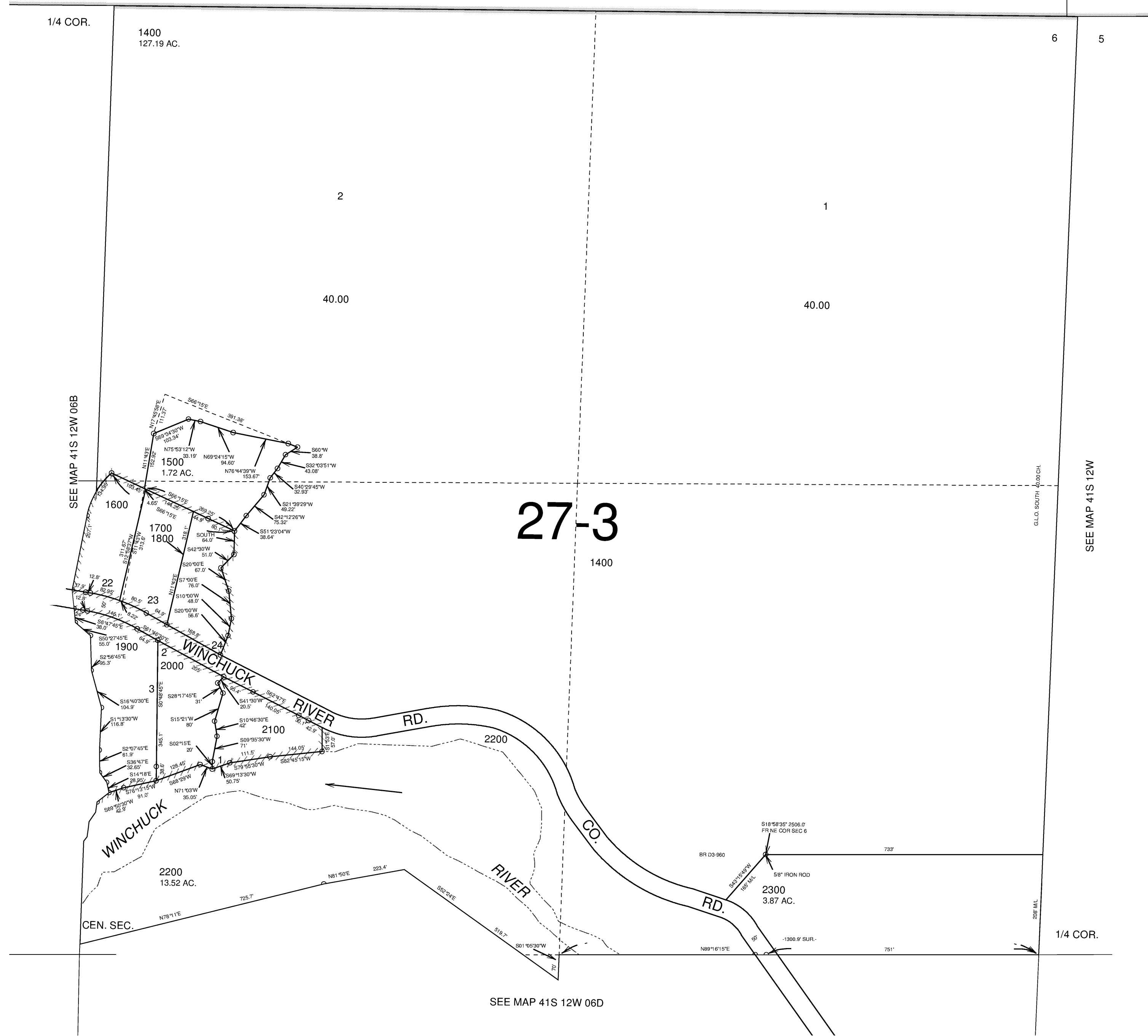
NE1/4 NE1/4 SECTION 06 T.41S. R.12W. W.M. CURRY COUNTY

41S 12W 06A

CANCELLED No.
100 THRU 1300
1501
2200M1



SEE MAP 41S 12W
9TH STANDARD PARALLEL SOUTH



Revised RAA
6/30/2004
41S 12W 06A