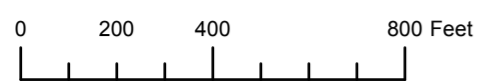


THIS MAP WAS PREPARED FOR ASSESSMENT PURPOSE ONLY

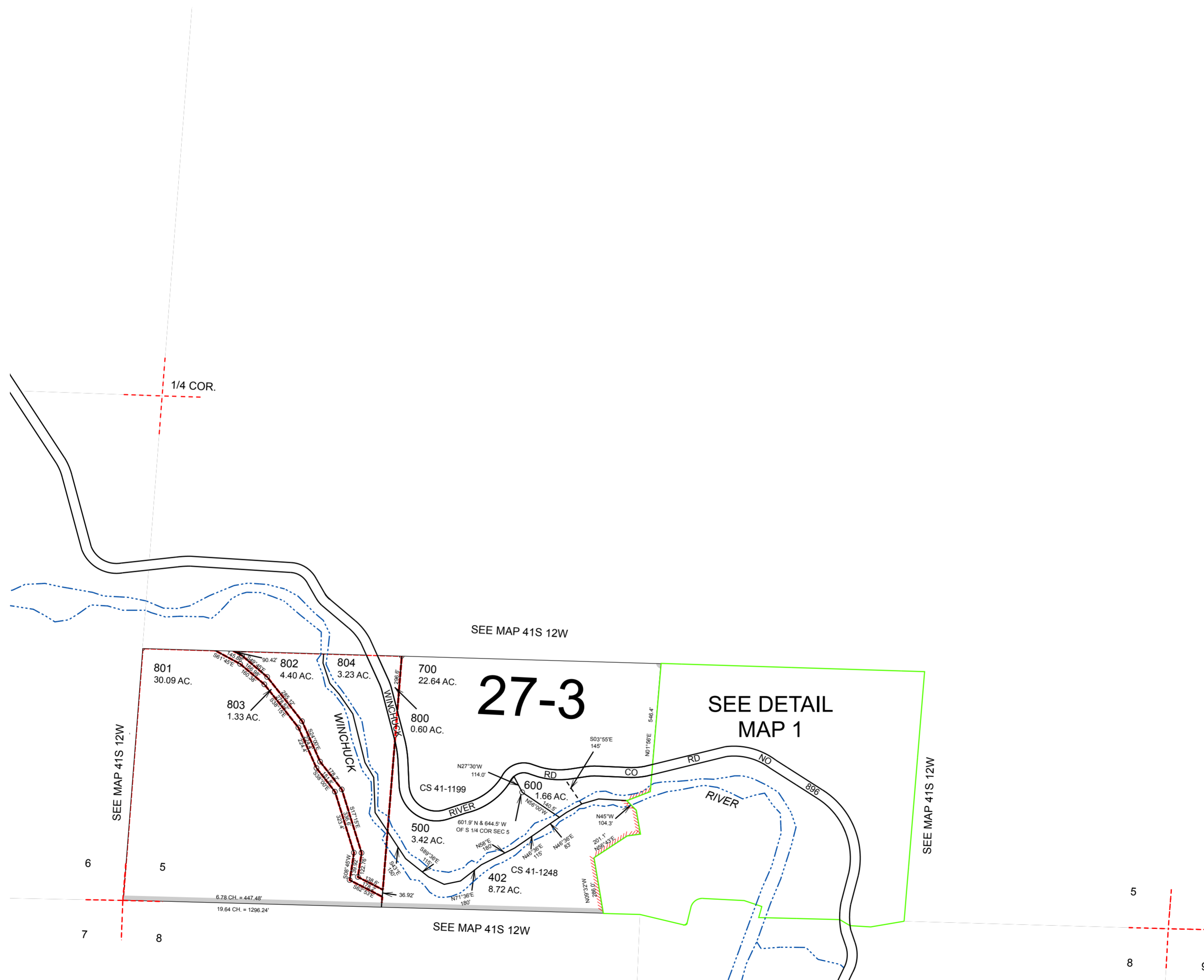


SECTION 5 T.41S. R.12W. W.M. CURRY COUNTY

1" = 400'

41S12W05 & INDEX

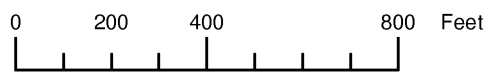
CANCELLED:
106
400
403
404



Revised: RAA
5/18/2010

41S12W05 & INDEX

THIS MAP WAS PREPARED FOR ASSESSMENT PURPOSE ONLY



SECTION 05 T.41S. R.12W. W.M.
CURRY COUNTY
1" = 400'

41S 12W 05
CANCELLED No.
106
400
403
404

