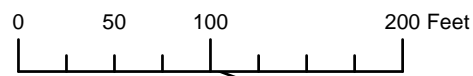


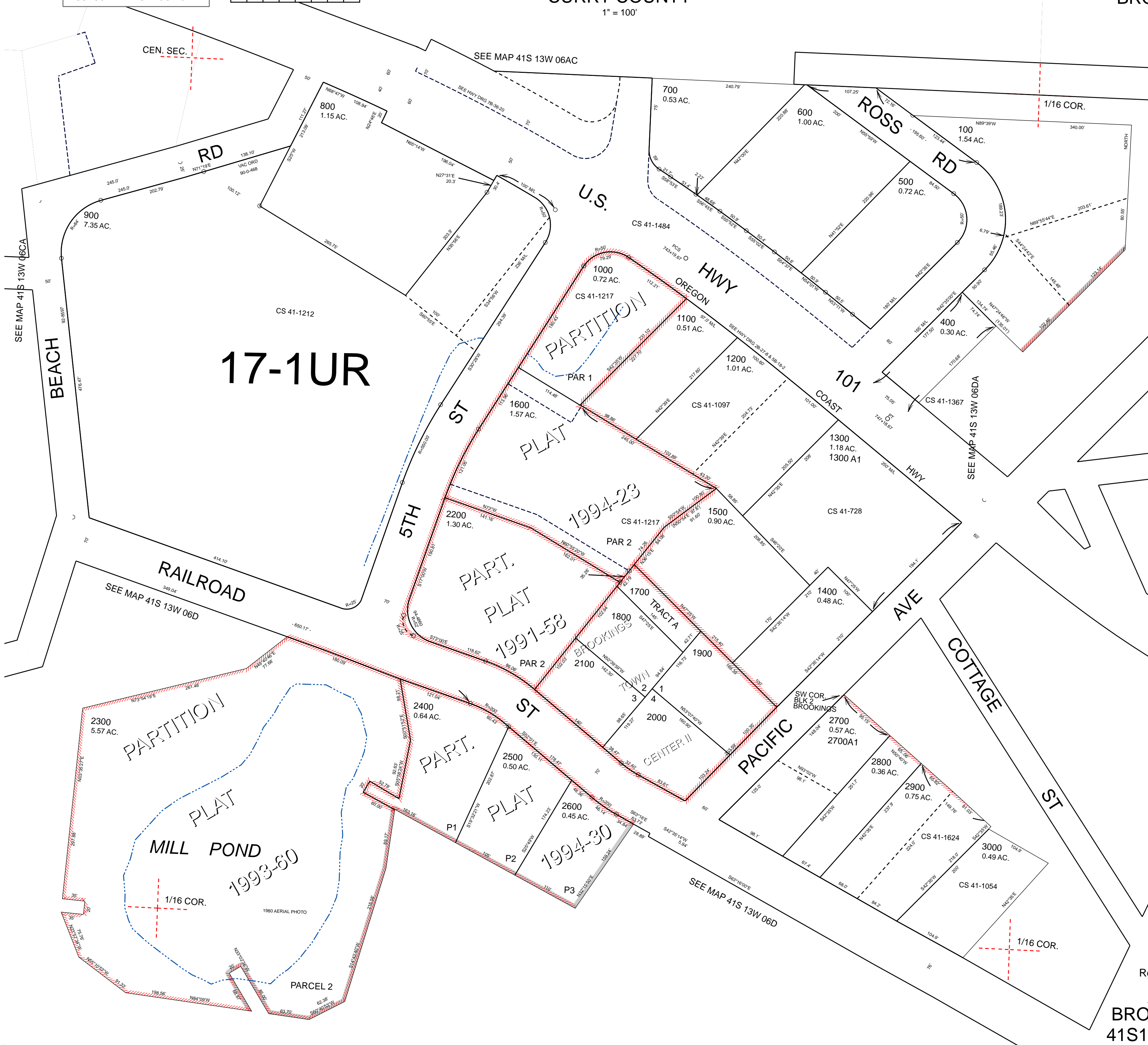
THIS MAP WAS PREPARED FOR ASSESSMENT PURPOSE ONLY



N.W.1/4 S.E.1/4 SEC.6 T.41S. R.13W. W.M.  
CURRY COUNTY  
1" = 100'

41S13W06DB  
BROOKINGS

CANCELLED:  
200  
300



17-1UR

MILL POND  
1993-60  
1/16 COR.

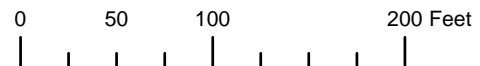
PARTITION  
PLAT  
1994-23  
PAR 1

PART.  
PLAT  
1991-58  
PAR 2

PART.  
PLAT  
1994-30  
P1  
P2  
P3

Revised: RAA  
8/24/2010  
BROOKINGS  
41S13W06DB

THIS MAP WAS PREPARED FOR ASSESSMENT PURPOSE ONLY

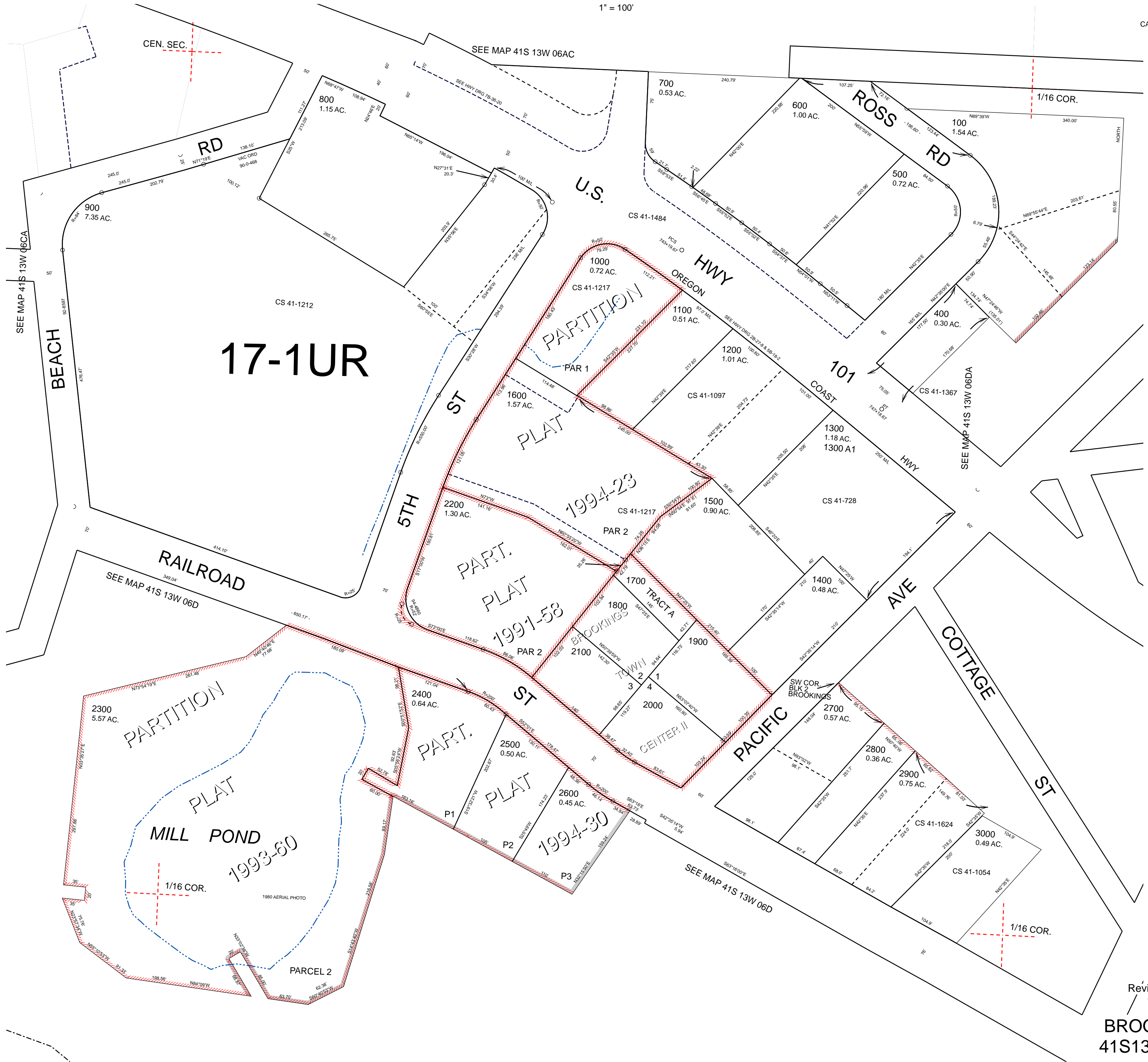


N.W.1/4 S.E.1/4 SEC.6 T.41S. R.13W. W.M.  
CURRY COUNTY

1" = 100'

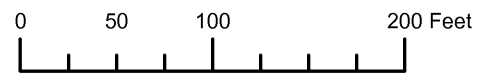
41S13W06DB  
BROOKINGS

CANCELLED:  
200  
300



Revised: RAA  
12/1/2009  
**BROOKINGS**  
41S13W06DB

THIS MAP WAS PREPARED FOR ASSESSMENT PURPOSE ONLY

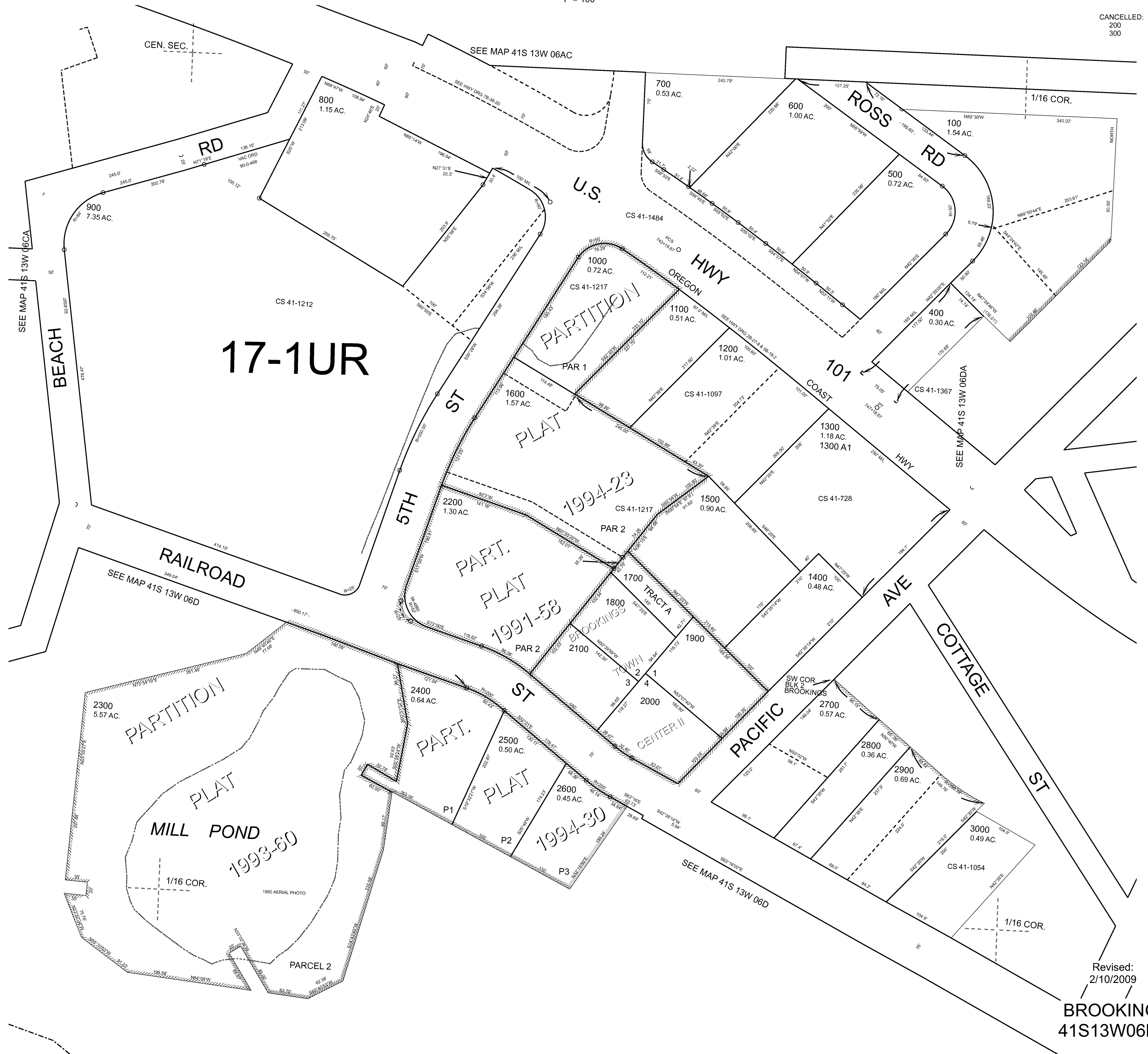


N.W. 1/4 S.E. 1/4 SEC. 6 T. 41S. R. 13W. W.M. CURRY COUNTY

1" = 100'

41S13W06DB BROOKINGS

CANCELLED: 200 300



Revised: 2/10/2009

BROOKINGS 41S13W06DB

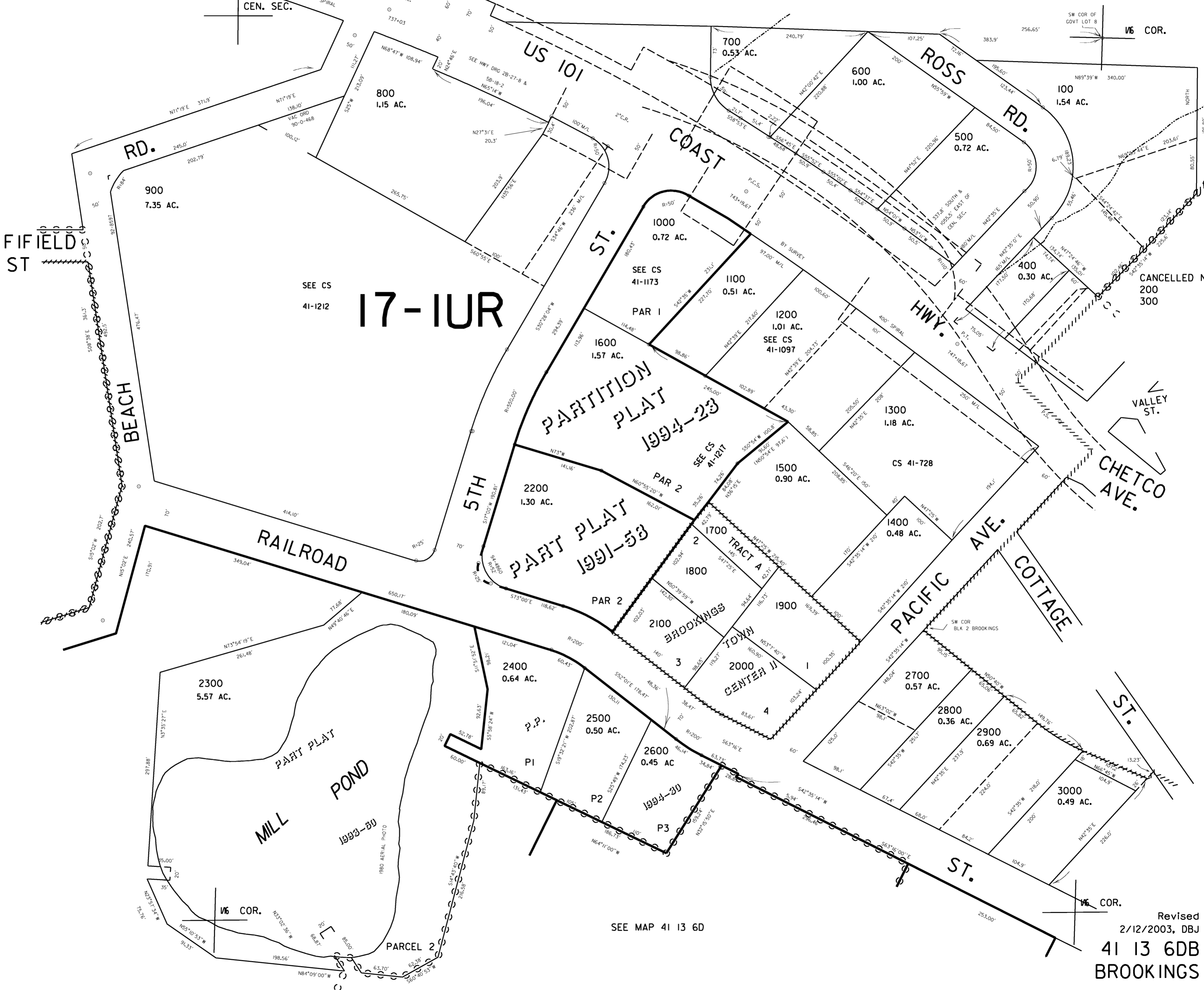
THIS MAP WAS PREPARED FOR ASSESSMENT PURPOSE ONLY

NW1/4 SE1/4 SEC. 6 T.41S. R.13W. W.M.  
CURRY COUNTY

41 13 6DB  
BROOKINGS

1" = 100'

SEE MAP 41 13 6AC



SEE MAP 41 13 6CA

SEE MAP 41 13 6DA

CANCELLED NOS.  
200  
300

SEE MAP 41 13 6D

Revised  
2/12/2003, DBJ  
41 13 6DB  
BROOKINGS