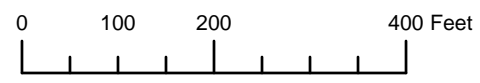


THIS MAP WAS PREPARED FOR ASSESSMENT PURPOSE ONLY



S.E. 1/4 SEC. 6 T. 41S. R. 13W. W.M. CURRY COUNTY

1" = 200'

41S13W06D & INDEX BROOKINGS

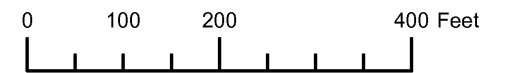
CANCELLED:  
100 THRU 108  
200  
301 THRU 302  
304 THRU 308  
310  
315 THRU 319  
321 THRU 322  
326 THRU 332  
334  
400 THRU 401  
700 THRU 1200



Revised: RAA 7/6/2010

BROOKINGS & INDEX 41S13W06D

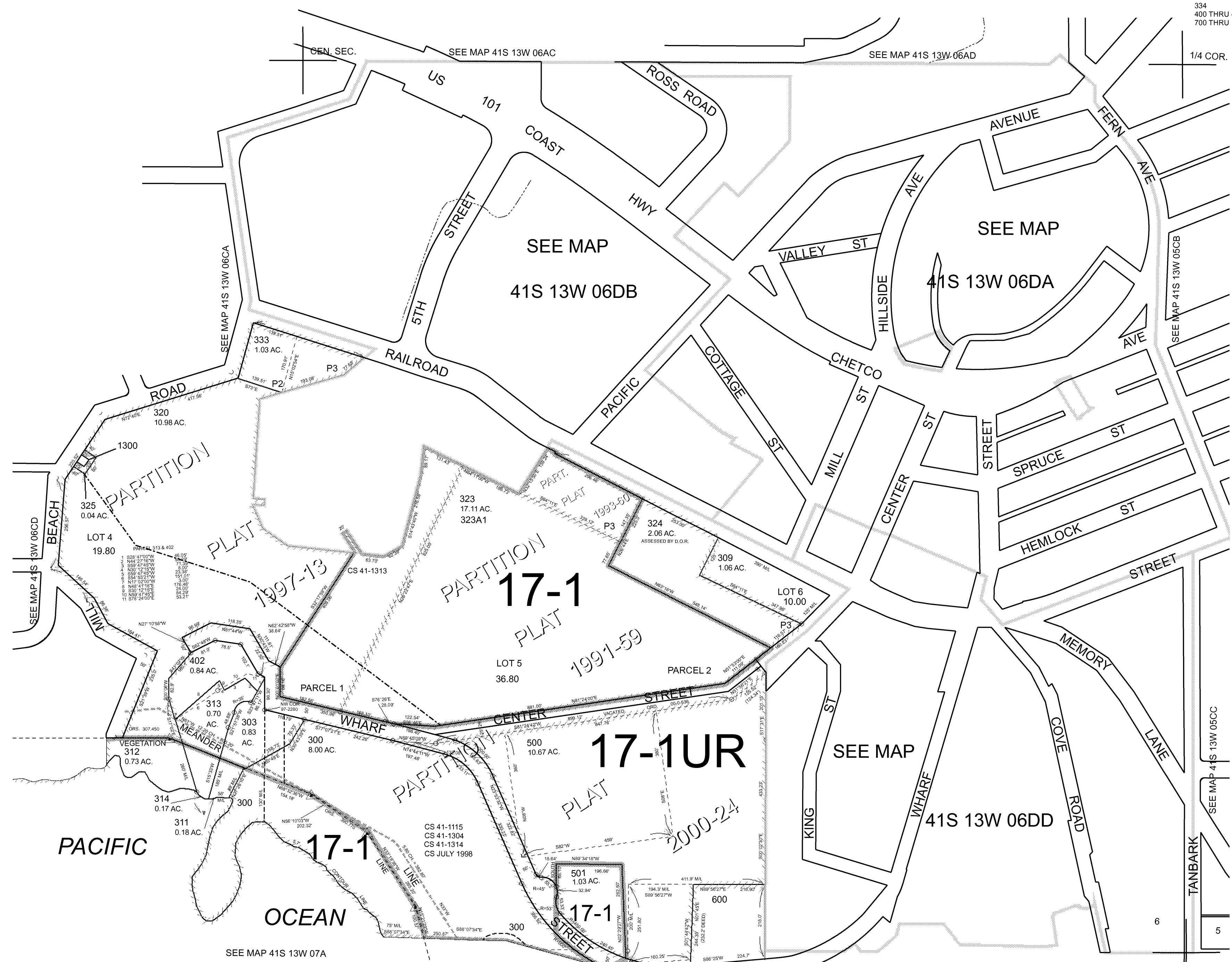
THIS MAP WAS PREPARED FOR ASSESSMENT PURPOSE ONLY



SE1/4 SECTION 06 T.41S. R.13W. W.M. CURRY COUNTY  
1" = 200'

41S 13W 06D & INDEX BROOKINGS

- CANCELLED NO.
- 100 THRU 108
- 200
- 301 THRU 302
- 304 THRU 308
- 310
- 315 THRU 319
- 321 THRU 322
- 326 THRU 332
- 334
- 400 THRU 401
- 700 THRU 1200





THIS MAP WAS PREPARED FOR  
ASSESSMENT PURPOSE ONLY

SE1/4 SEC. 6 T.41S. R.13W. W.M.  
CURRY COUNTY

1" = 200'

41 13 6D  
& INDEX  
BROOKINGS



SEE MAP 41 13 6AC

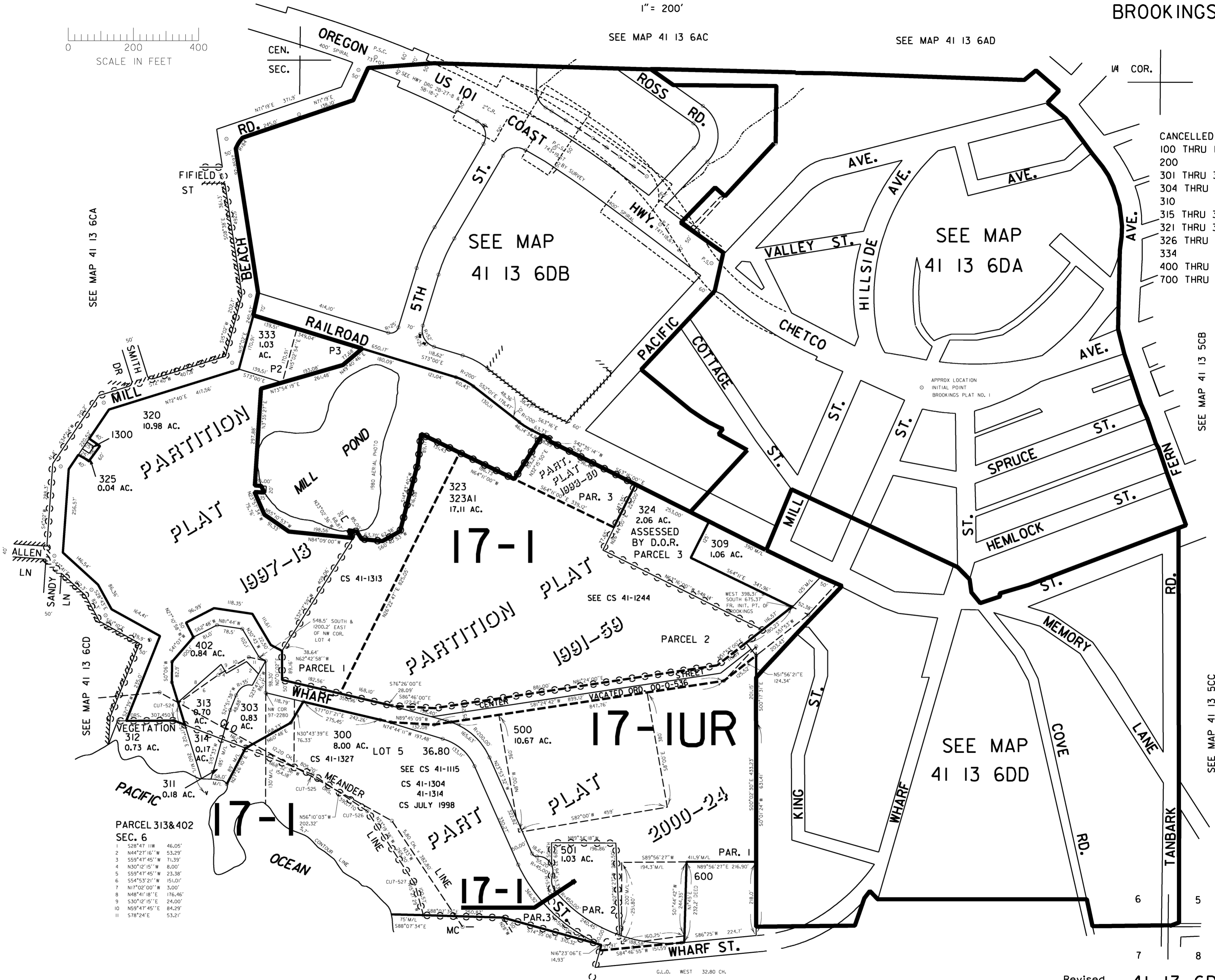
SEE MAP 41 13 6AD

SEE MAP 41 13 6CA

CANCELLED NO.  
100 THRU 108  
200  
301 THRU 302  
304 THRU 308  
310  
315 THRU 319  
321 THRU 322  
326 THRU 332  
334  
400 THRU 401  
700 THRU 1200

SEE MAP 41 13 5CB

SEE MAP 41 13 5CC



PARCEL 313&402  
SEC. 6

1	S28°47'11"W	46.05'
2	N44°21'16"W	53.29'
3	S59°47'45"W	71.30'
4	N30°12'15"W	8.00'
5	S59°47'45"W	23.38'
6	S54°53'21"W	151.01'
7	N17°02'00"W	3.00'
8	N48°41'18"E	176.46'
9	S30°12'15"E	24.00'
10	N59°47'45"E	84.29'
11	S78°24"E	53.21'

Revised  
2/11/2003, DBJ

41 13 6D  
& INDEX  
BROOKINGS

SEE MAP 41 13 7A