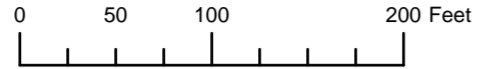


THIS MAP WAS PREPARED FOR ASSESSMENT PURPOSE ONLY

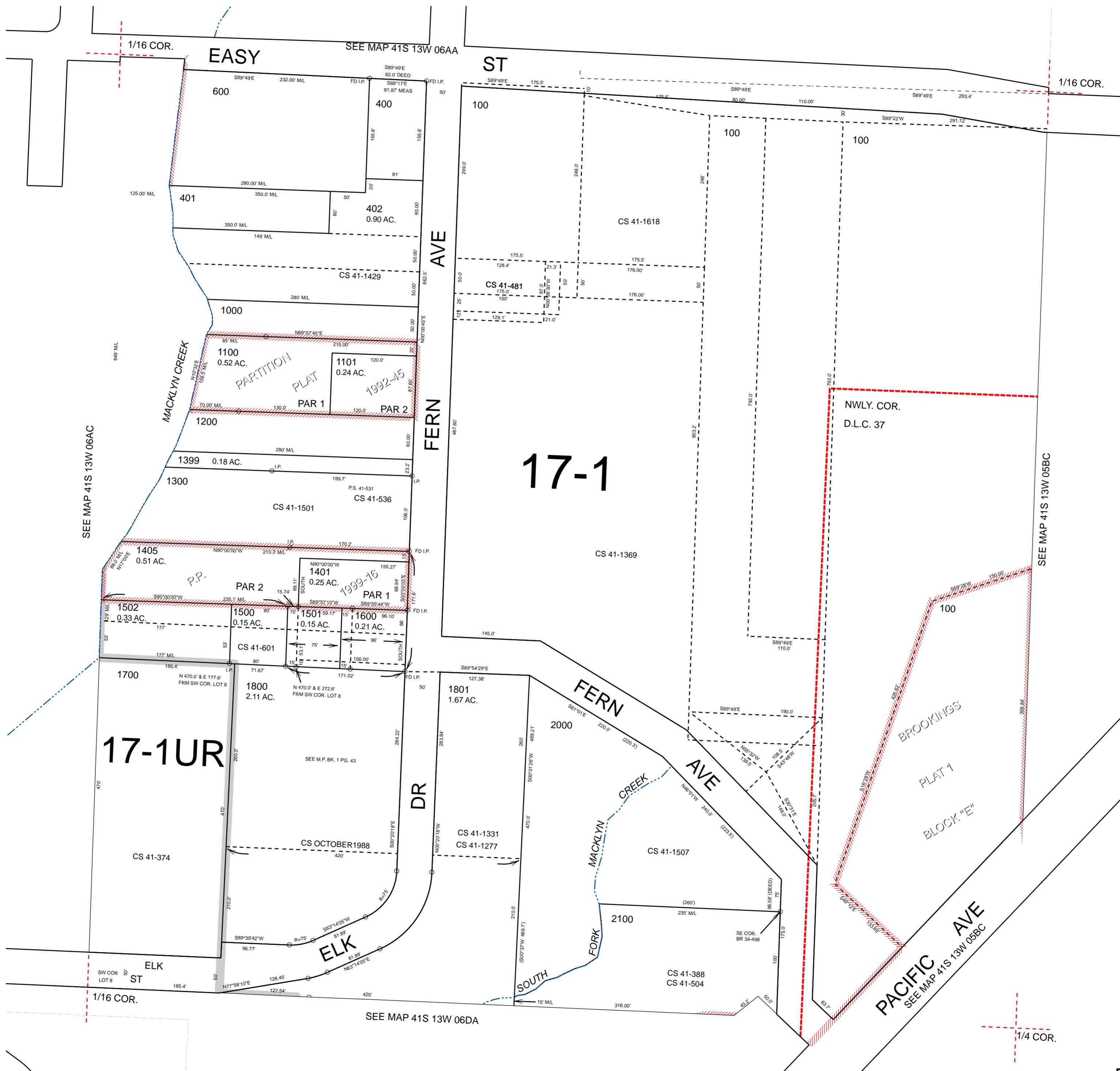


S.E.1/4 N.E.1/4 SEC.6 T.41S. R.13W. W.M. CURRY COUNTY

1" = 100'

41S13W06AD BROOKINGS

- CANCELLED:
- 101
 - 102
 - 103
 - 198
 - 199
 - 200
 - 300
 - 402A1
 - 500
 - 700
 - 701
 - 702
 - 800
 - 900
 - 1400
 - 1402
 - 1403
 - 1404
 - 1601
 - 1900



SEE MAP 41S 13W 05BC

SEE MAP 41S 13W 06AC

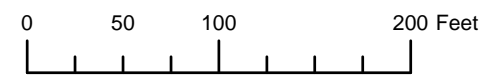
SEE MAP 41S 13W 06DA

1/4 COR.

Revised: RAA 6/21/2010

BROOKINGS 41S13W06AD

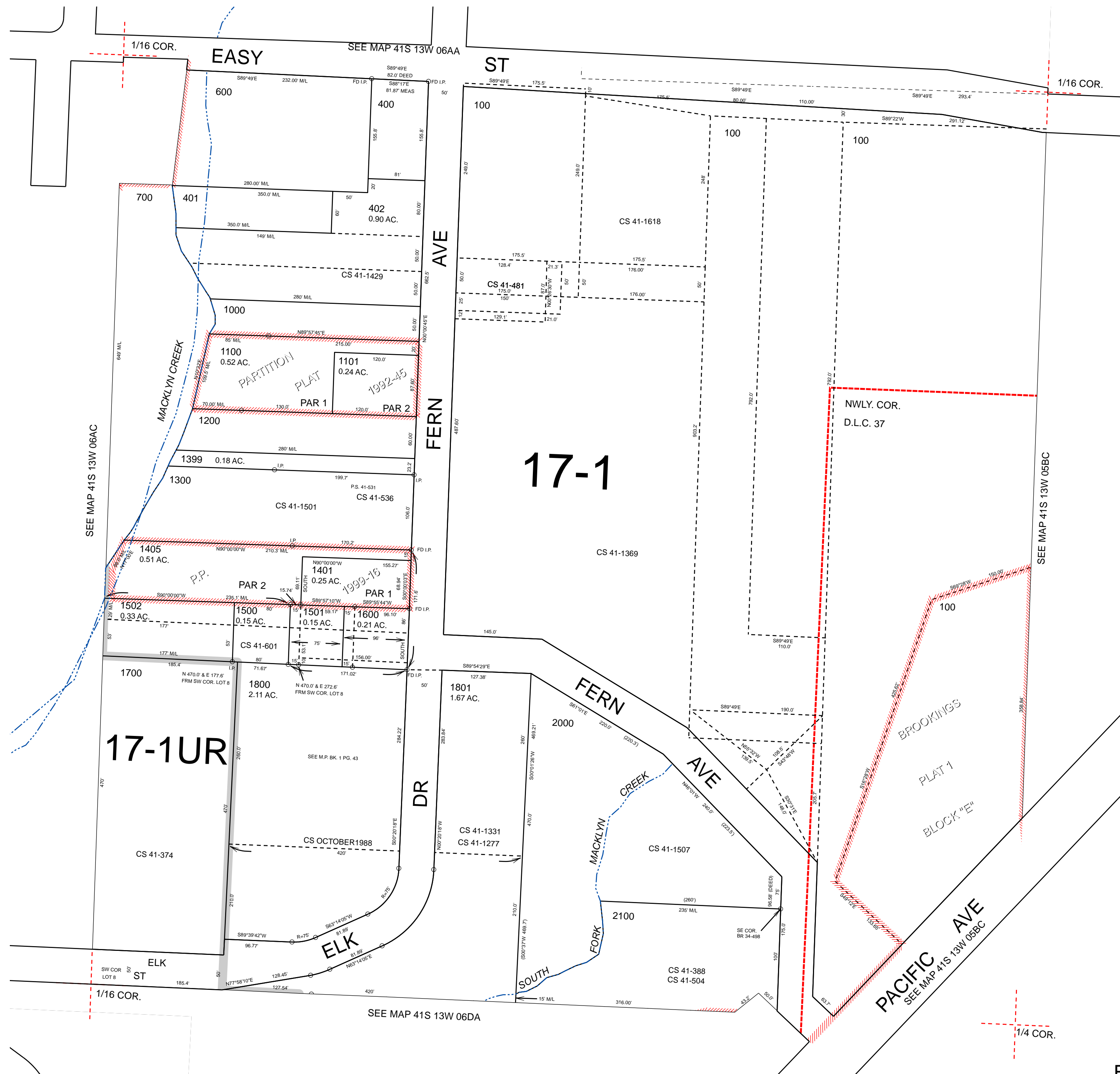
THIS MAP WAS PREPARED FOR ASSESSMENT PURPOSE ONLY



S.E.1/4 N.E.1/4 SEC.6 T.41S. R.13W. W.M. CURRY COUNTY
1" = 100'

41S13W06AD
BROOKINGS

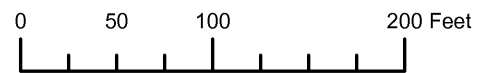
- CANCELLED:
- 101
 - 102
 - 103
 - 198
 - 199
 - 200
 - 300
 - 402A1
 - 500
 - 701
 - 702
 - 800
 - 900
 - 1400
 - 1402
 - 1403
 - 1404
 - 1601
 - 1900



Revised: RAA
6/2/2010

BROOKINGS
41S13W06AD

THIS MAP WAS PREPARED FOR ASSESSMENT PURPOSE ONLY

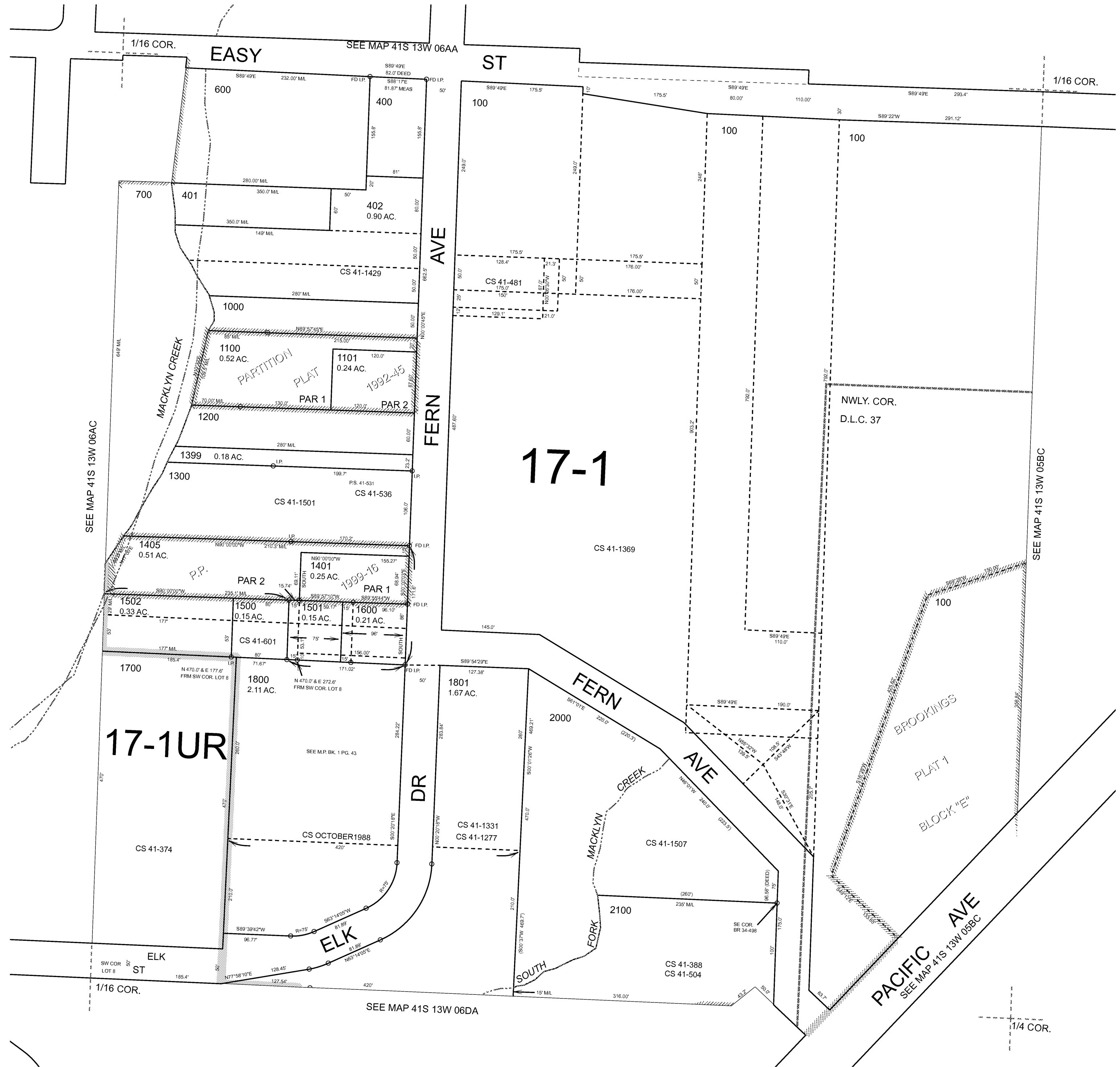


S.E. 1/4 N.E. 1/4 SEC. 6 T. 41S. R. 13W. W.M. CURRY COUNTY

1" = 100'

41S13W06AD BROOKINGS

- CANCELLED:
- 101
 - 102
 - 103
 - 198
 - 199
 - 200
 - 300
 - 402A1
 - 500
 - 701
 - 702
 - 800
 - 900
 - 1400
 - 1402
 - 1403
 - 1404
 - 1601
 - 1900



Revised: RAA 3/10/2009

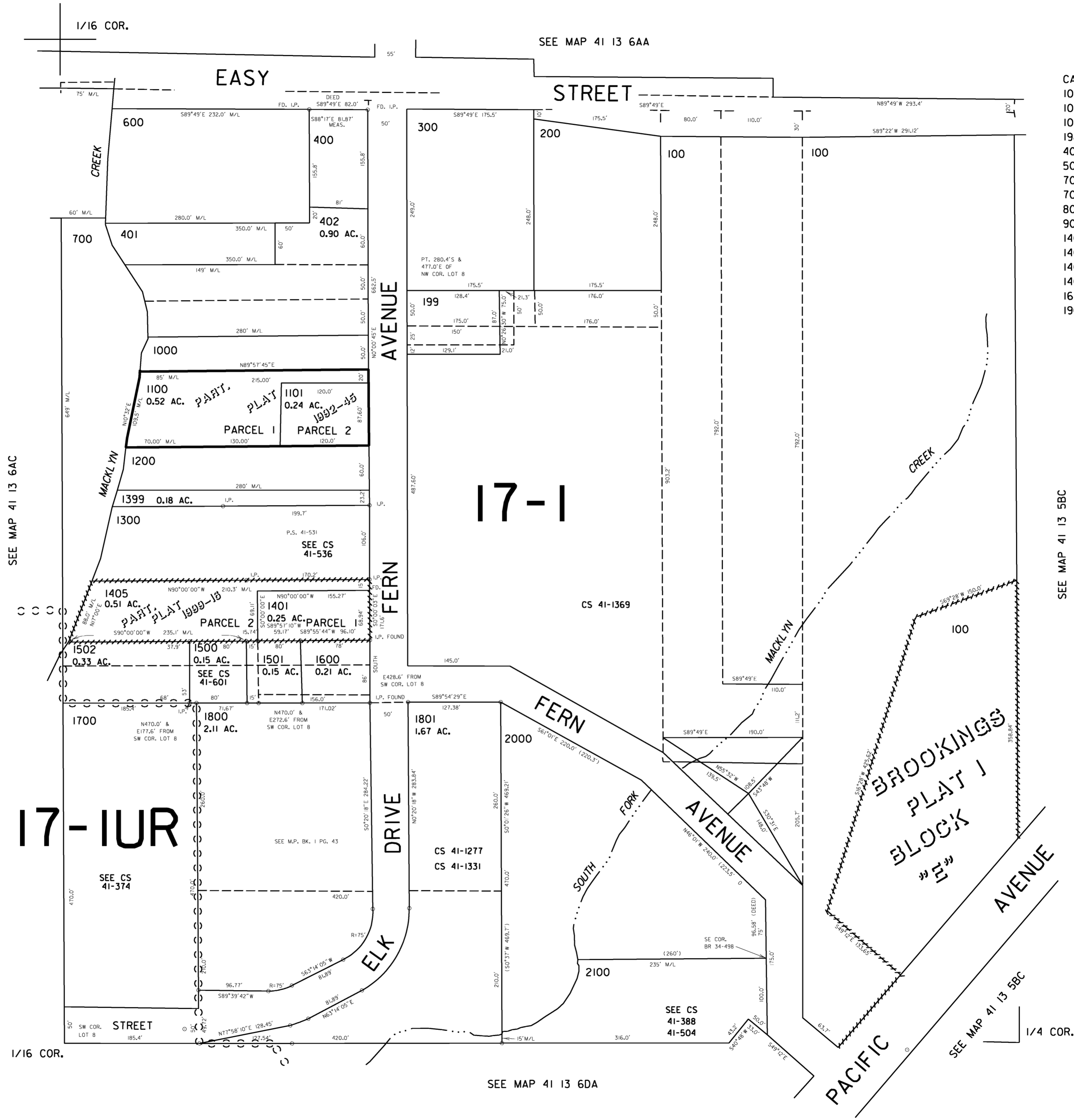
BROOKINGS 41S13W06AD

THIS MAP WAS PREPARED FOR
ASSESSMENT PURPOSE ONLY

SE1/4 NE1/4 SEC. 6 T.41S. R.13W. W.M.
CURRY COUNTY

1" = 100'

41 13 6AD
BROOKINGS



- CANCELLED NO.
- 101
 - 102
 - 103
 - 198
 - 402A1
 - 500
 - 701
 - 702
 - 800
 - 900
 - 1400
 - 1402
 - 1403
 - 1404
 - 1601
 - 1900

SEE MAP 41 13 5BC

Revised
4/3/2003, DBJ
41 13 6AD
BROOKINGS