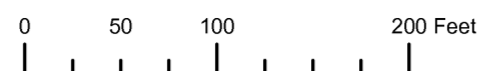
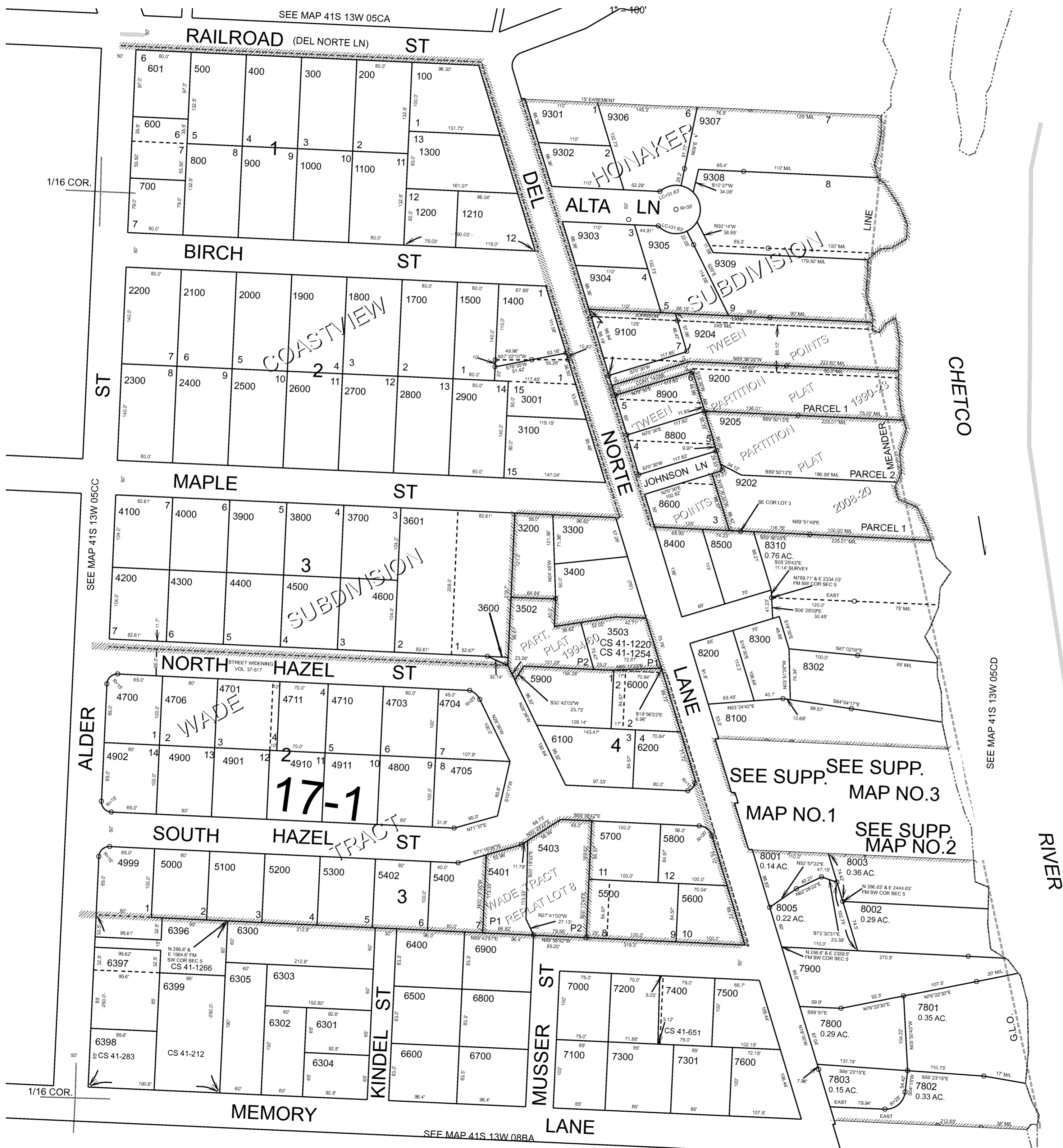


THIS MAP WAS PREPARED FOR ASSESSMENT PURPOSE ONLY



S.E.1/4 S.W.1/4 SEC.5 T.41S. R.13W. W.M. CURRY COUNTY

41S13W05CD BROOKINGS

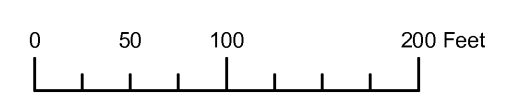


- CANCELLED:
- 701
 - 1401
 - 1600
 - 3000
 - 3500
 - 3501
 - 4702
 - 5801
 - 7201
 - 7700
 - 8000
 - 8004
 - 8006
 - 8007
 - 8301
 - 8601
 - 8700
 - 8701
 - 9000
 - 9001
 - 9201
 - 9203
 - 9300

SEE SUPP. MAP NO.1
SEE SUPP. MAP NO.2
SEE SUPP. MAP NO.3

Revised RAA 10/22/2008
BROOKINGS 41S13W05CD

THIS MAP WAS PREPARED FOR ASSESSMENT PURPOSE ONLY



SE1/4 SW1/4 SECTION 05 T.41S. R.13W. W.M. CURRY COUNTY

41S 13W 05CD BROOKINGS

- CANCELLED NO.
- 701
- 1401
- 1600
- 3000
- 3500
- 3501
- 4702
- 5901
- 7201
- 7700
- 8000
- 8004
- 8006
- 8007
- 8301
- 8601
- 8700
- 8701
- 9000
- 9001
- 9201
- 9203
- 9300



RIVER

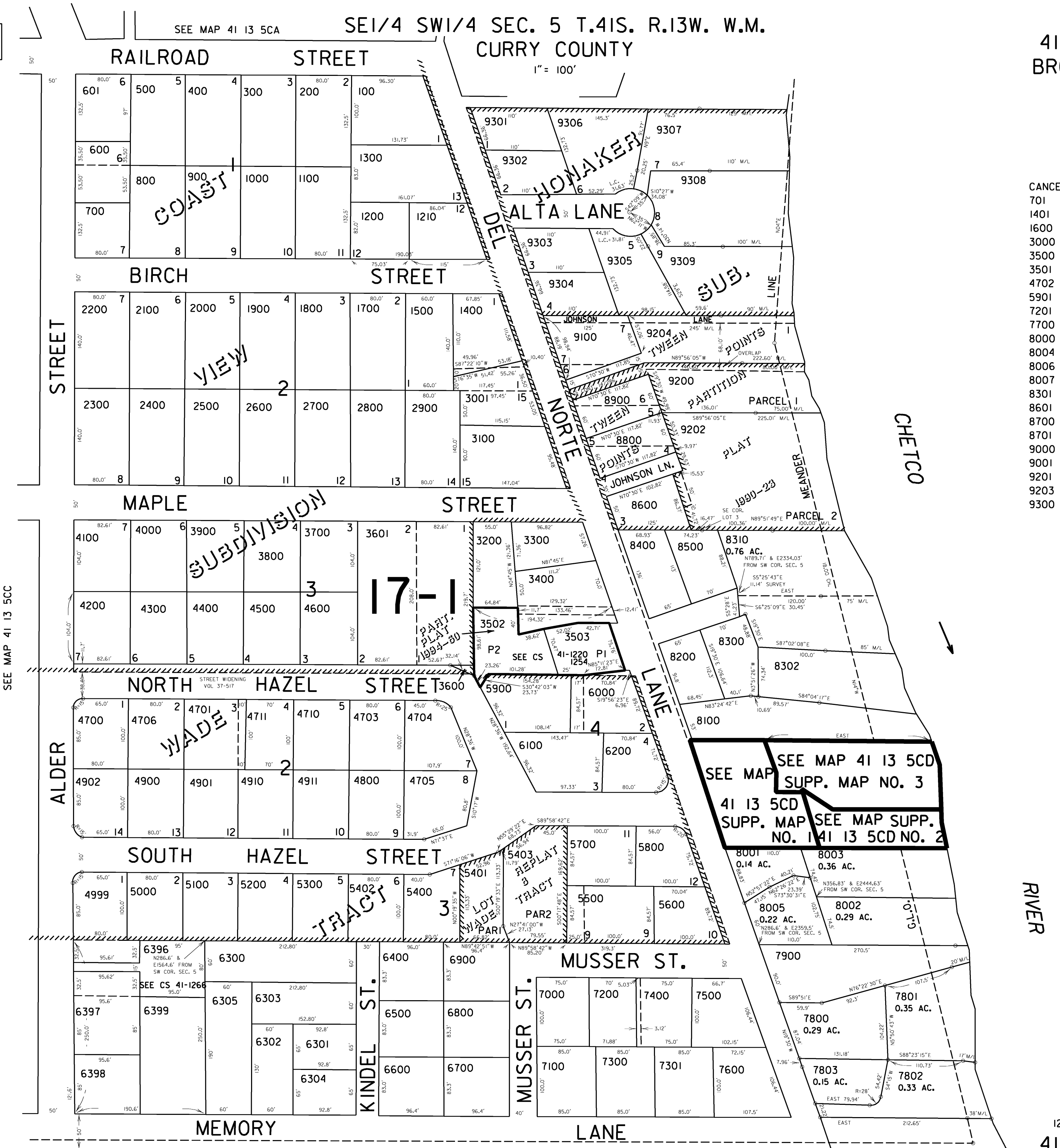
THIS MAP WAS PREPARED FOR ASSESSMENT PURPOSE ONLY

SEE MAP 41 13 5CA

SE1/4 SW1/4 SEC. 5 T.41S. R.13W. W.M. CURRY COUNTY

1" = 100'

41 13 5CD BROOKINGS



- CANCELLED NO.
- 701
 - 1401
 - 1600
 - 3000
 - 3500
 - 3501
 - 4702
 - 5901
 - 7201
 - 7700
 - 8000
 - 8004
 - 8006
 - 8007
 - 8301
 - 8601
 - 8700
 - 8701
 - 9000
 - 9001
 - 9201
 - 9203
 - 9300

SEE MAP 41 13 5CD
 SUPP. MAP NO. 3
 41 13 5CD
 SUPP. MAP NO. 1
 41 13 5CD NO. 2

RIVER

SEE MAP 41 13 8BA

Revised
 12/27/2002, DBJ
 41 13 5CD
 BROOKINGS