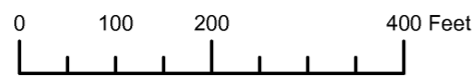


THIS MAP WAS PREPARED FOR ASSESSMENT PURPOSE ONLY

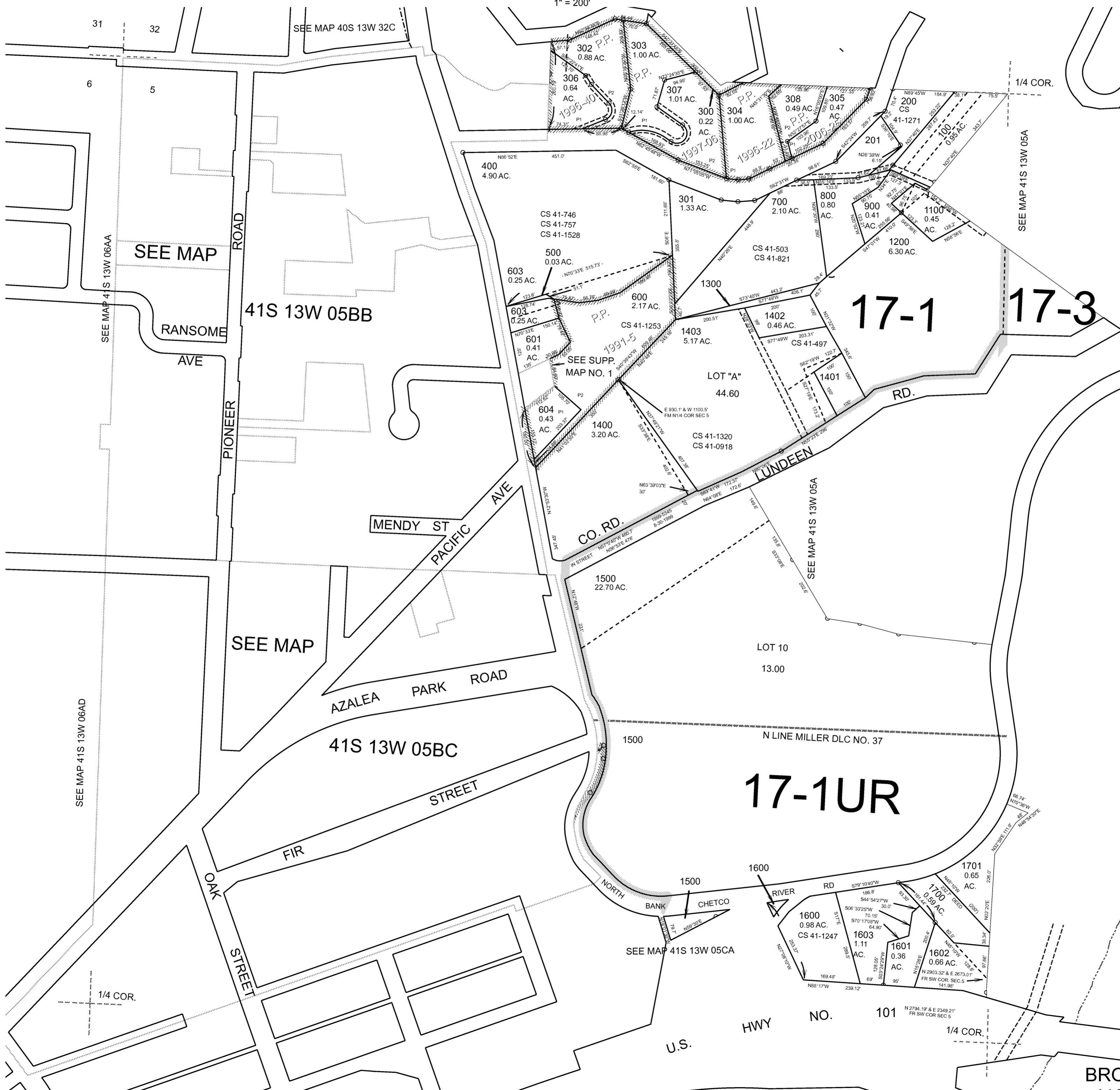


N.W. 1/4 SEC. 5 T. 41S. R. 13W. W.M. CURRY COUNTY

41S13W05B BROOKINGS

1" = 200'

- CANCELLED:
- 101
 - 401
 - 501
 - 602
 - 605
 - 901
 - 1000
 - 1702



17-1UR

17-1

17-3

41S 13W 05BB

41S 13W 05BC

Revised: 2/11/2009

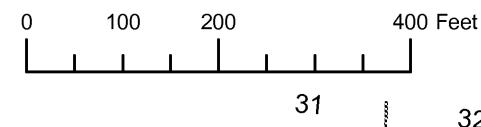
BROOKINGS 41S13W05B

NW1/4 SECTION 05 T.41S. R.13W. W.M.
CURRY COUNTY

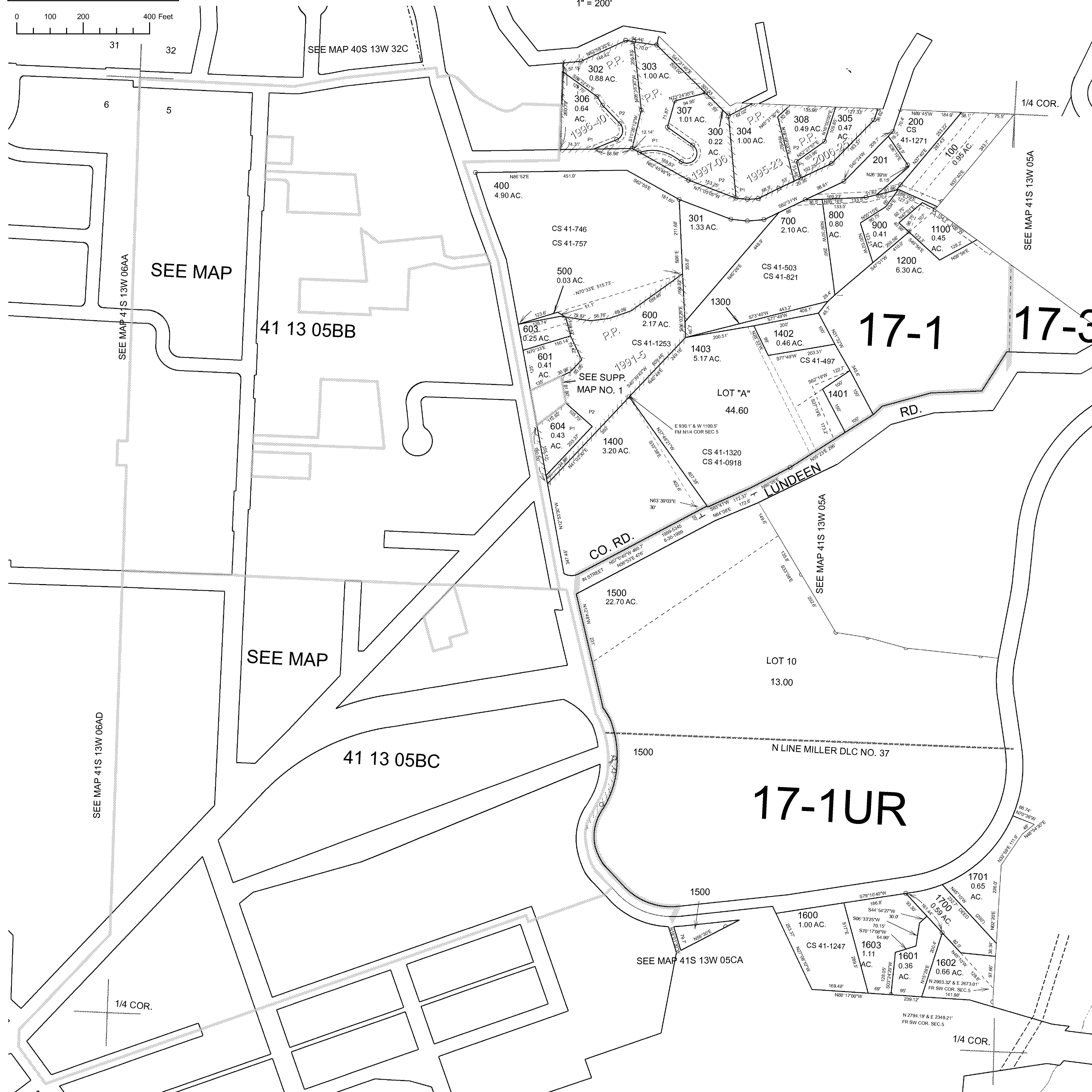
1" = 200'

41S 13W 05B
& INDEX

THIS MAP WAS PREPARED FOR
ASSESSMENT PURPOSE ONLY



- CANCELLED NO.
- 101
- 401
- 501
- 602
- 605
- 901
- 1000
- 1702

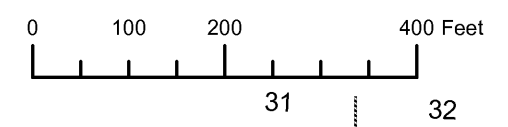


THIS MAP WAS PREPARED FOR ASSESSMENT PURPOSE ONLY

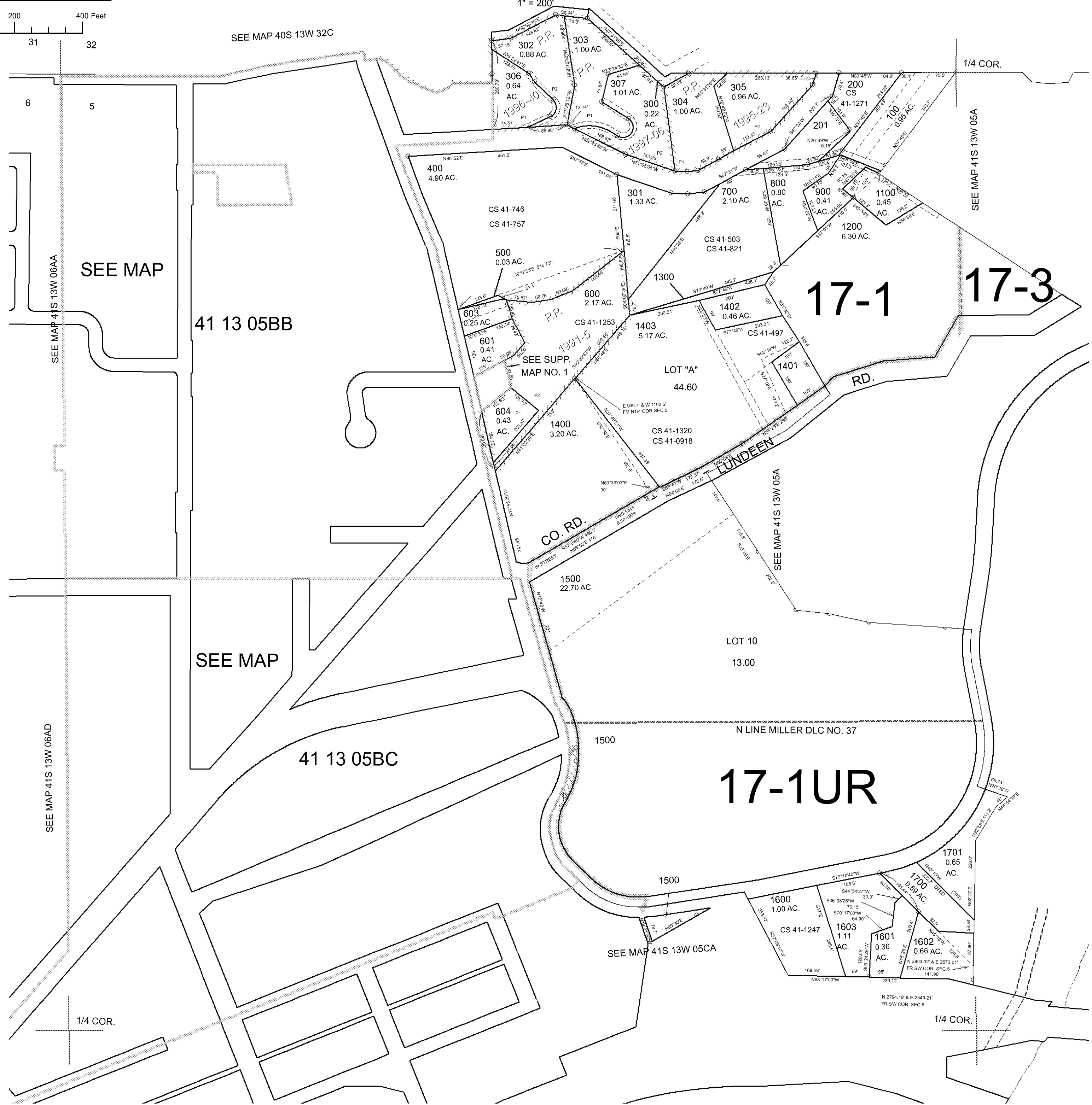
NW1/4 SECTION 05 T.41S. R.13W. W.M. CURRY COUNTY

41S 13W 05B

CANCELLED NO.
101
401
501
602
605
901
1000
1702



1" = 200'



31 32

SEE MAP 40S 13W 32C

1/4 COR.

SEE MAP 41S 13W 05A

SEE MAP 41S 13W 06AA

SEE MAP

41 13 05BB

17-1 17-3

CO. RD.

LUNDEEN

SEE MAP 41S 13W 05A

SEE MAP

41 13 05BC

17-1UR

N LINE MILLER DLC NO. 37

SEE MAP 41S 13W 06AD

SEE MAP 41S 13W 05CA

1/4 COR.

1/4 COR.

Revised DBJ
2/23/2006

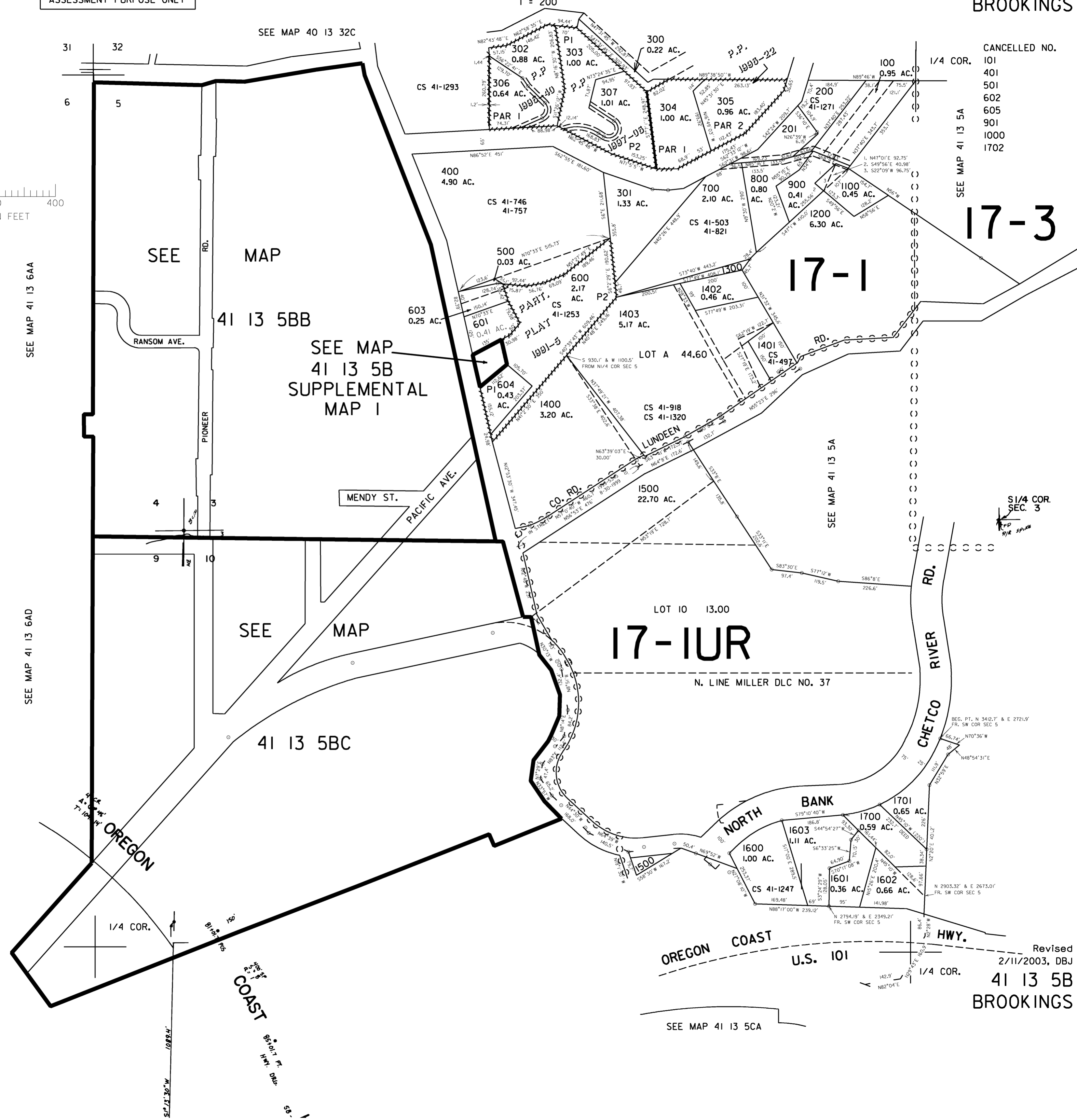
41S 13W 05B

NW1/4 SEC. 5 T.41S. R.13W. W.M.
CURRY COUNTY

41 13 5B
BROOKINGS

THIS MAP WAS PREPARED FOR
ASSESSMENT PURPOSE ONLY

1" = 200'



CANCELLED NO.

101
401
501
602
605
901
1000
1702

SEE MAP 41 13 6AA

SEE MAP 41 13 6AD

SEE MAP 40 13 32C

41 13 5BB

SEE MAP
41 13 5B
SUPPLEMENTAL
MAP I

SEE MAP

41 13 5BC

17-IUR

OREGON COAST

U.S. 101

SEE MAP 41 13 5CA

17-3

17-1

1/4 COR.
SEC. 3

Revised
2/11/2003, DBJ

41 13 5B
BROOKINGS