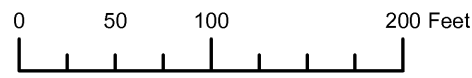


THIS MAP WAS PREPARED FOR ASSESSMENT PURPOSE ONLY

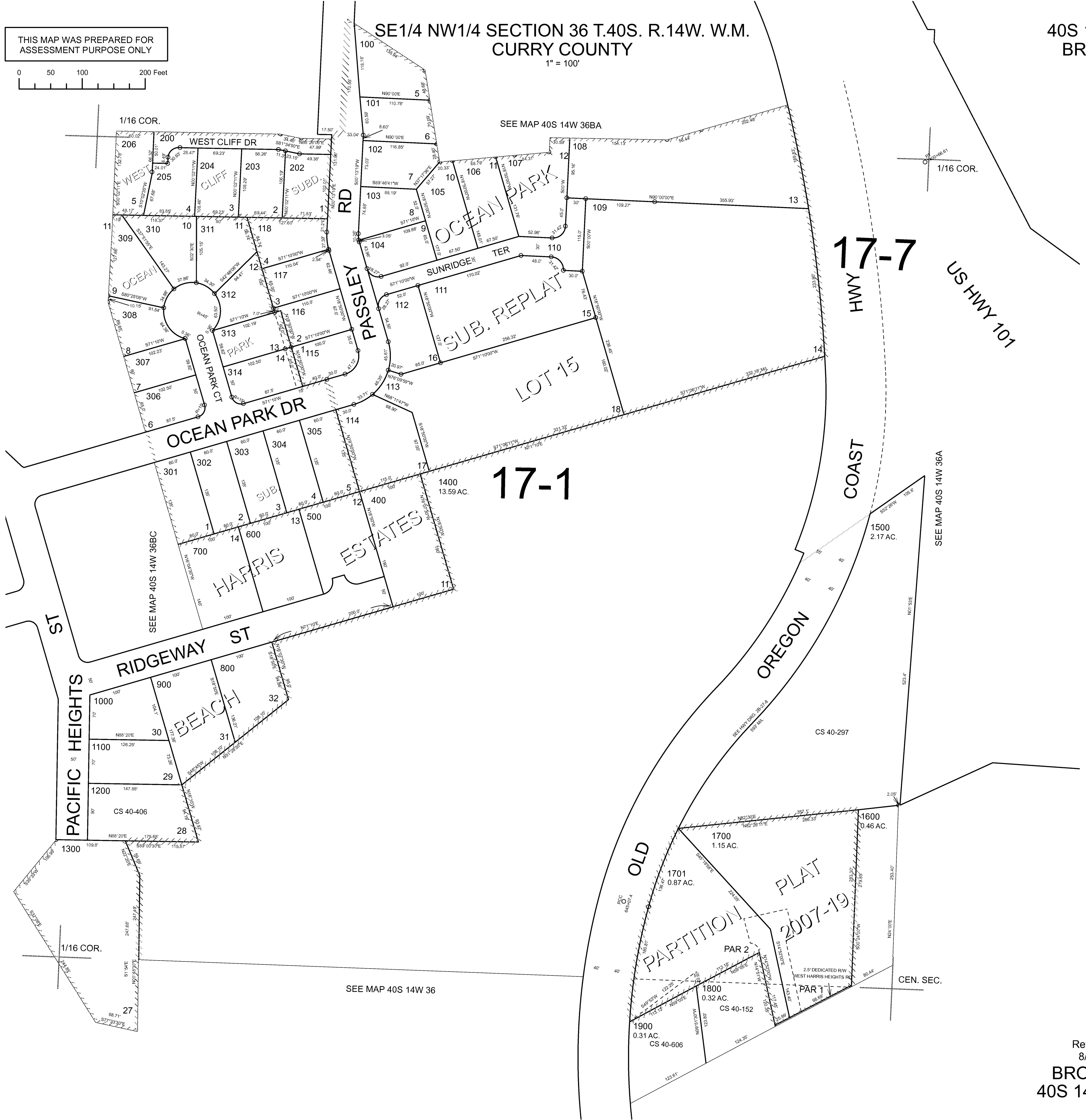


SE1/4 NW1/4 SECTION 36 T.40S. R.14W. W.M. CURRY COUNTY

1" = 100'

40S 14W 36BD BROOKINGS

CANCELLED NO. 201 300



1/16 COR.

SEE MAP 40S 14W 36BA

1/16 COR.

17-7

US HWY 101

COAST

17-1

SEE MAP 40S 14W 36A

PACIFIC HEIGHTS

RIDGEWAY ST

BEACH

HARRIS ESTATES

OREGON

OLD

PARTITION PLAT 2007-19

PAR 2

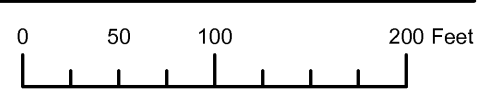
PAR 1

CEN. SEC.

SEE MAP 40S 14W 36

Revised RAA 8/16/2007 BROOKINGS 40S 14W 36BD

THIS MAP WAS PREPARED FOR ASSESSMENT PURPOSE ONLY

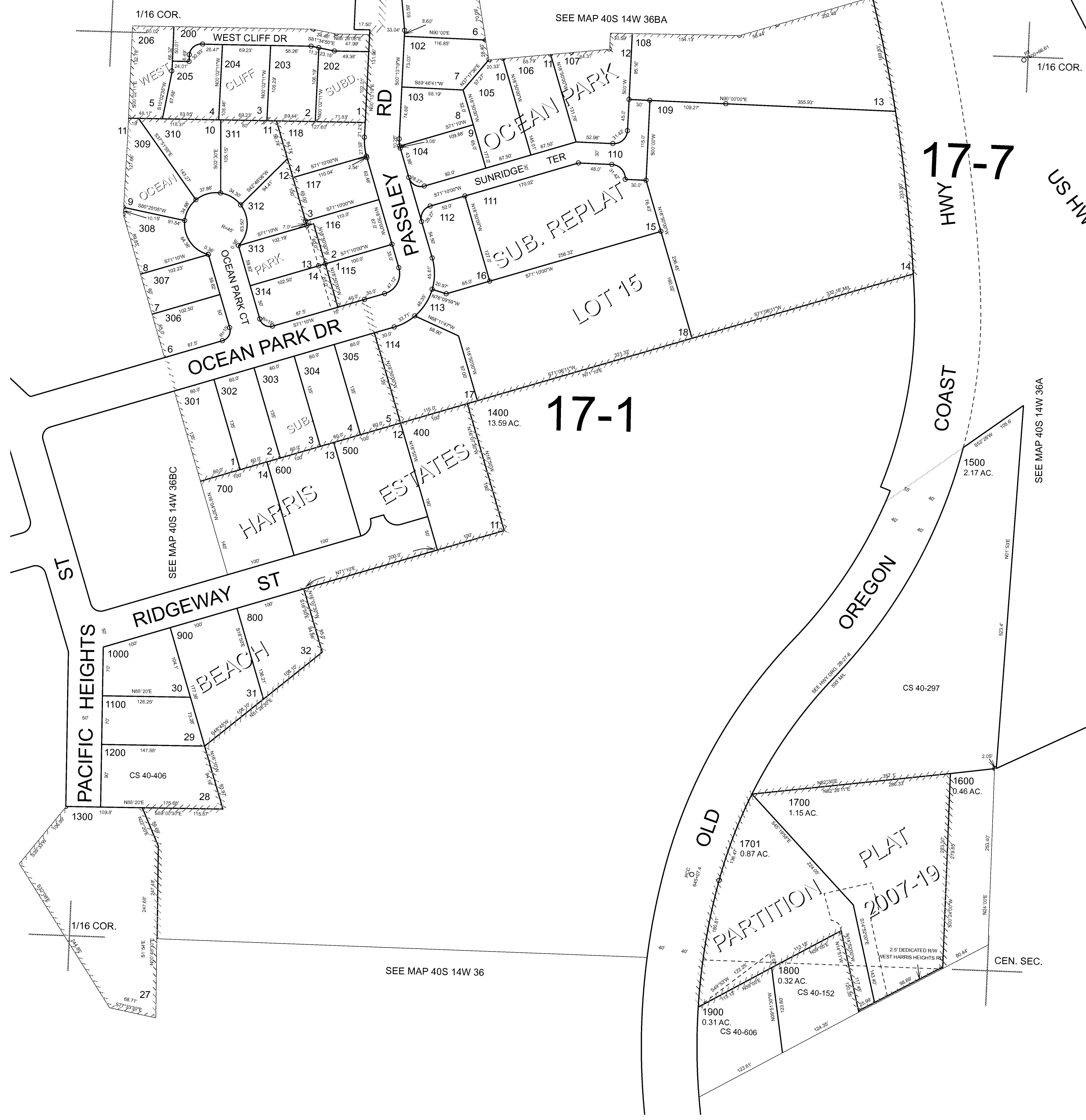


SE1/4 NW1/4 SECTION 36 T.40S. R.14W. W.M. CURRY COUNTY

1" = 100'

40S 14W 36BD BROOKINGS

CANCELLED NO. 201 300



1/16 COR.

SEE MAP 40S 14W 36BA

1/16 COR.

17-7

US HWY 101

HWY

COAST

17-1

1400 13.59 AC.

1500 2.17 AC.

SEE MAP 40S 14W 36A

ST

RIDGEWAY ST

PACIFIC HEIGHTS

HARRIS ESTATES

OCEAN PARK DR

HARRIS ESTATES

OREGON

OLD

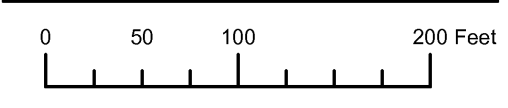
PARTITION PLAT 2007-19

CS 40-297

SEE MAP 40S 14W 36

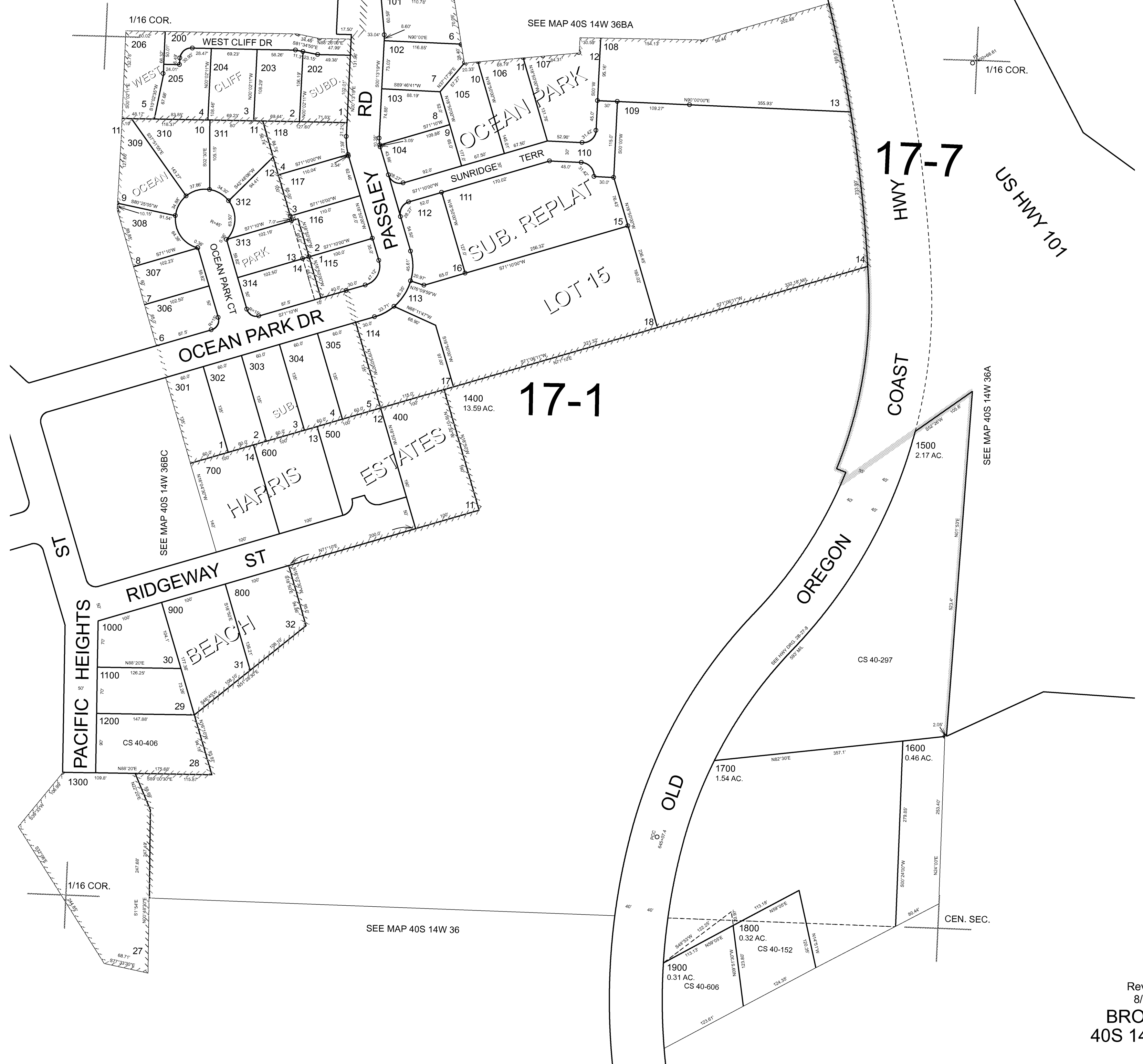
CEN. SEC.

THIS MAP WAS PREPARED FOR ASSESSMENT PURPOSE ONLY



SE1/4 NW1/4 SECTION 36 T.40S. R.14W. W.M. CURRY COUNTY
1" = 100'

40S 14W 36BD
BROOKINGS
CANCELLED NO.
201
300



17-7

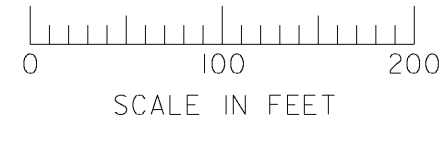
17-1

Revised RAA
8/20/2006
BROOKINGS
40S 14W 36BD

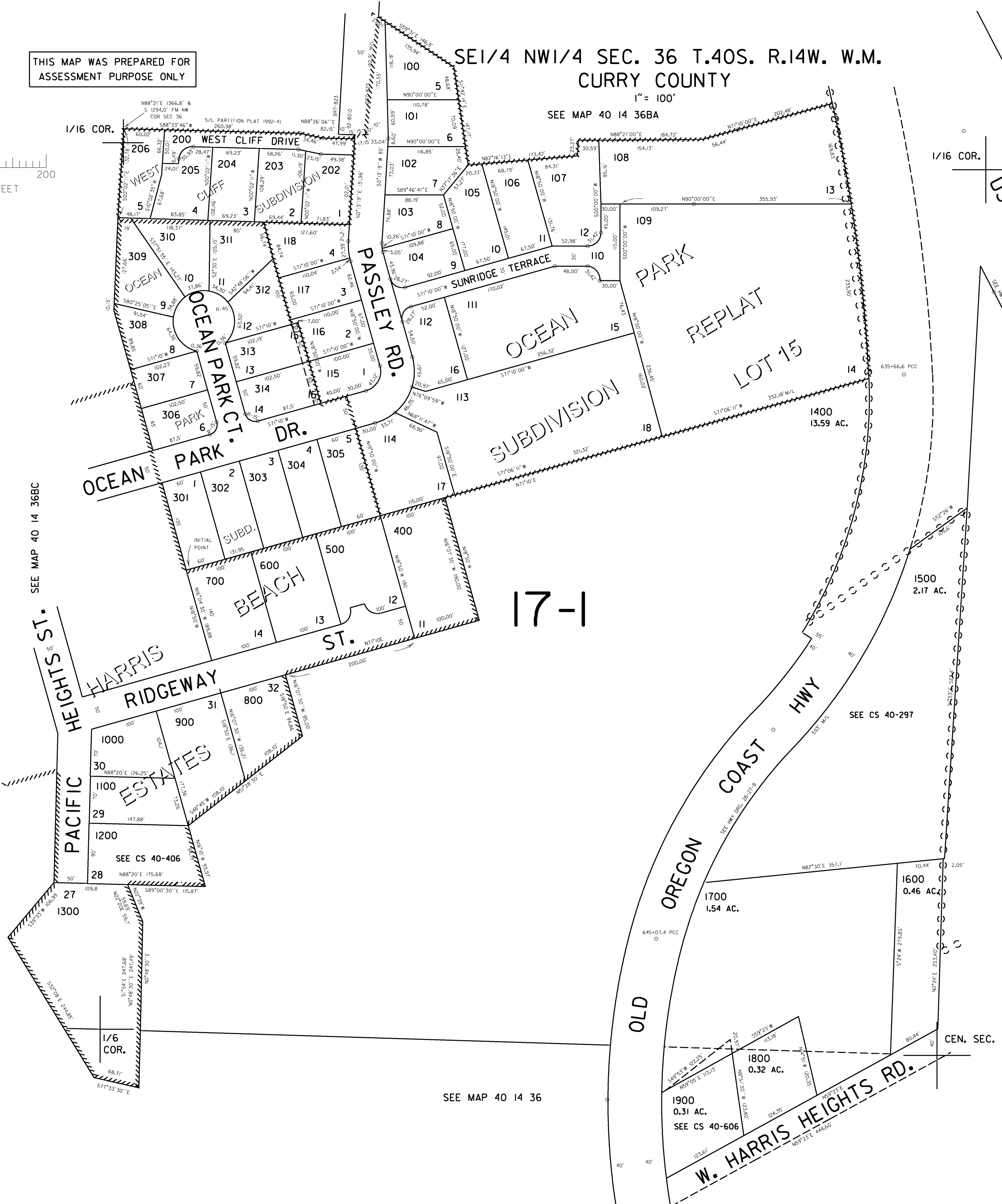
THIS MAP WAS PREPARED FOR
ASSESSMENT PURPOSE ONLY

SE1/4 NW1/4 SEC. 36 T.40S. R.14W. W.M. CURRY COUNTY

40 14 36BD BROOKINGS



1" = 100'



CANCELLED NOS.
201
300

US HWY 101

17-1

SEE MAP 40 14 36A

SEE MAP 40 14 36BC

SEE CS 40-297

SEE MAP 40 14 36

1900
0.31 AC.
SEE CS 40-606

1700
1.54 AC.

1500
2.17 AC.

1600
0.46 AC.

1400
13.59 AC.

1800
0.32 AC.

Revised
11/20/2003, DBJ
**40 14 36BD
BROOKINGS**