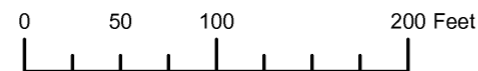


THIS MAP WAS PREPARED FOR ASSESSMENT PURPOSE ONLY

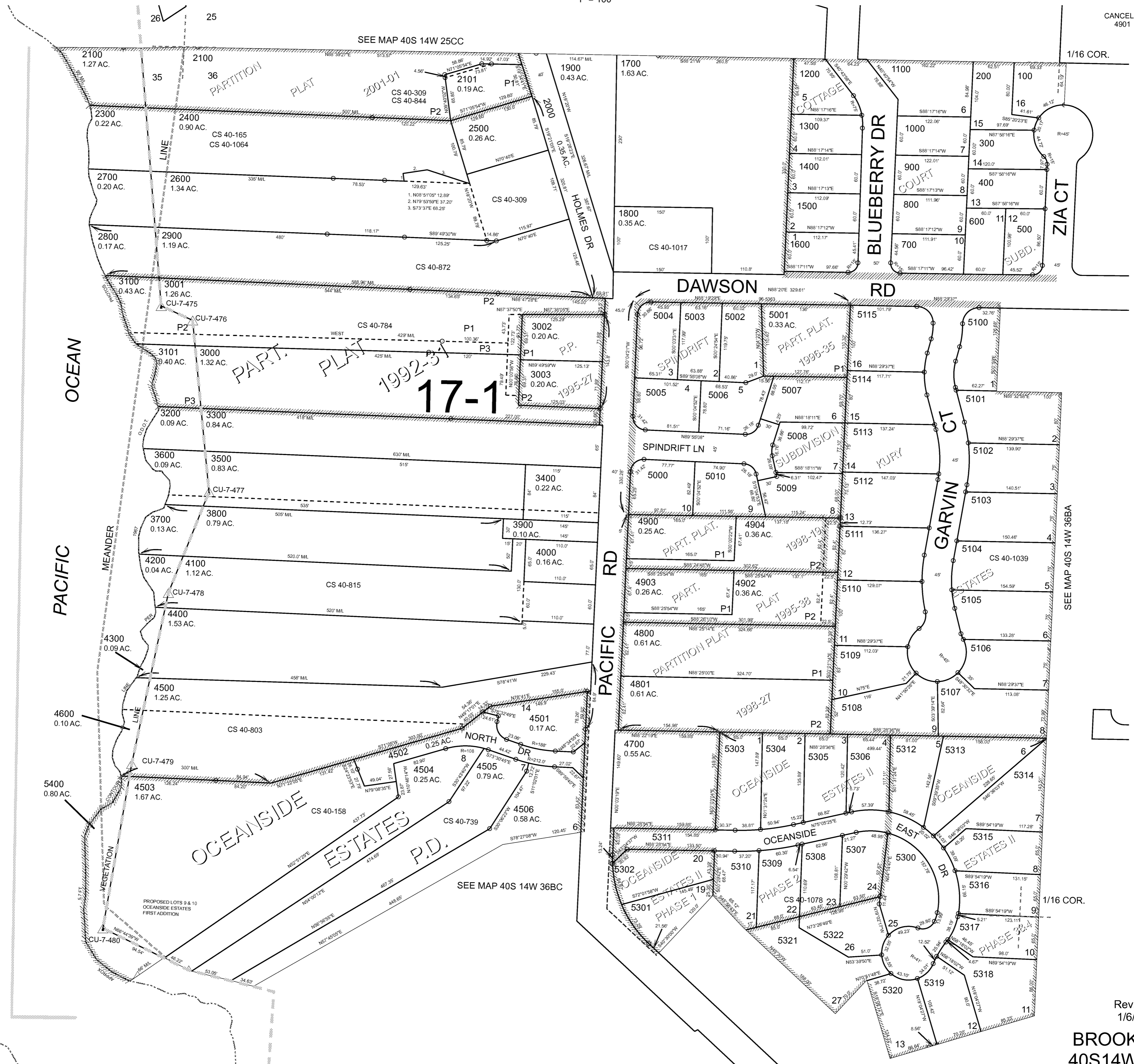


# N.W.1/4 N.W.1/4 SEC.36 T.40S. R.14W. W.M. CURRY COUNTY

1" = 100'

# 40S14W36BB BROOKINGS

CANCELLED:  
4901



OCEAN

PACIFIC

MEANDER

VEGETATION

17-1

SEE MAP 40S 14W 36BA

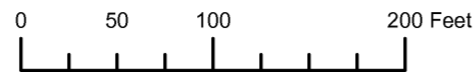
SEE MAP 40S 14W 36BC

1/16 COR.

Revised:  
1/6/2010

## BROOKINGS 40S14W36BB

THIS MAP WAS PREPARED FOR ASSESSMENT PURPOSE ONLY



N.W. 1/4 N.W. 1/4 SEC. 36 T.40S. R.14W. W.M. CURRY COUNTY

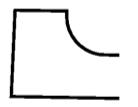
1" = 100'

40S14W36BB BROOKINGS

CANCELLED: 4901



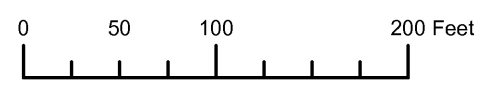
SEE MAP 40S 14W 36BA



Revised: RAA 5/12/2009

BROOKINGS 40S14W36BB

THIS MAP WAS PREPARED FOR ASSESSMENT PURPOSE ONLY



NW1/4 NW1/4 SECTION 36 T.40S. R.14W. W.M. CURRY COUNTY 1" = 100'

40S 14W 36BB BROOKINGS



17-1

SEE MAP 40S 14W 36BA

SEE MAP 40S 14W 25CC

SEE MAP 40S 14W 36BC

Revised RAA 8/20/2006 BROOKINGS 40S 14W 36BB

THIS MAP WAS PREPARED FOR ASSESSMENT PURPOSE ONLY

# NW1/4 NW1/4 SEC. 36 T.40S. R.14W. W.M. CURRY COUNTY

## 40 14 36BB BROOKINGS



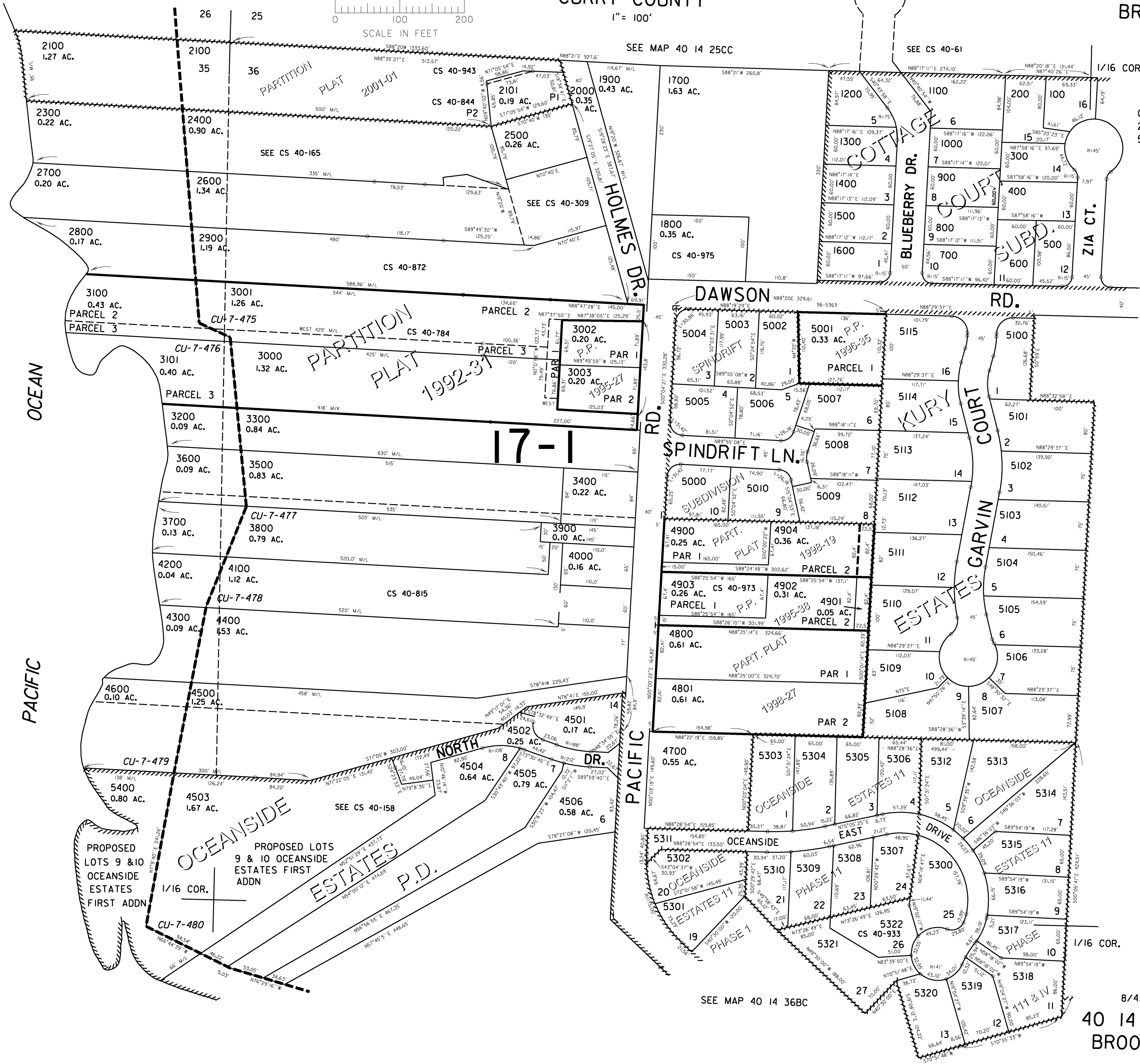
1" = 100'

SEE MAP 40 14 25CC

SEE CS 40-61

1/16 COR.

CANCELLED NO. 2200 5200



OCEAN

PACIFIC

PACIFIC

SEE MAP 40 14 36BC

SEE MAP 40 14 36BA

PROPOSED LOTS 9 & 10 OCEANSIDE ESTATES FIRST ADDN

PROPOSED LOTS 9 & 10 OCEANSIDE ESTATES FIRST ADDN

OCEANSIDE ESTATES P.D.

Revised 8/4/2005, DBJ  
40 14 36BB BROOKINGS