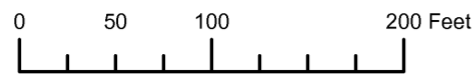


THIS MAP WAS PREPARED FOR ASSESSMENT PURPOSE ONLY

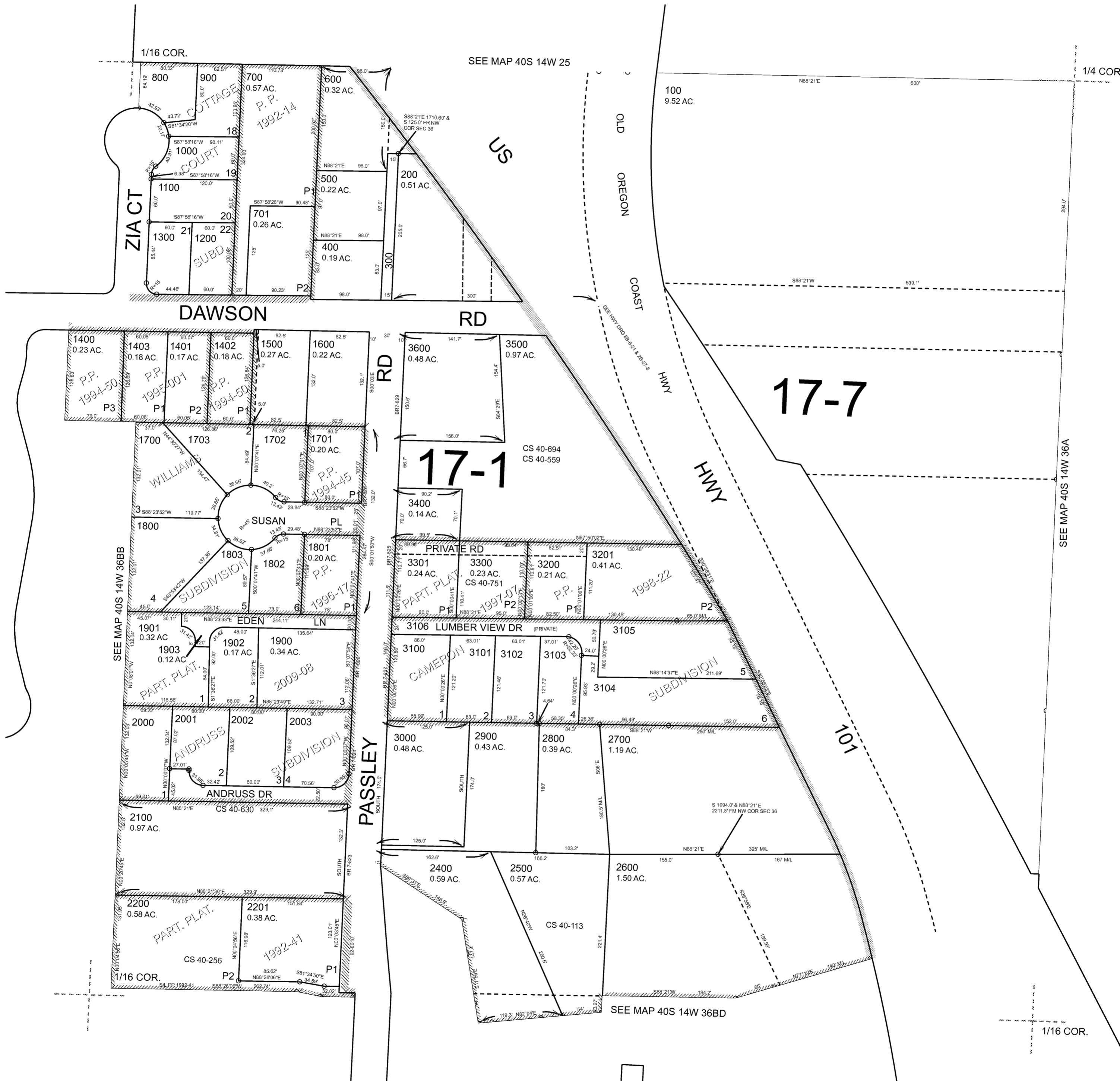


N.E. 1/4 N.W. 1/4 SEC. 36 T.40S. R.14W. W.M. CURRY COUNTY

1" = 100'

40S14W36BA BROOKINGS

CANCELLED: 2300



Revised: RAA 7/7/2009

BROOKINGS 40S14W36BA

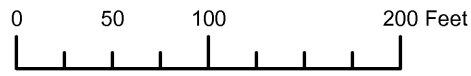
THIS MAP WAS PREPARED FOR ASSESSMENT PURPOSE ONLY

NE1/4 NW1/4 SECTION 36 T.40S. R.14W. W.M. CURRY COUNTY

1" = 100'

40S 14W 36BA BROOKINGS

CANCELLED NO. 2300

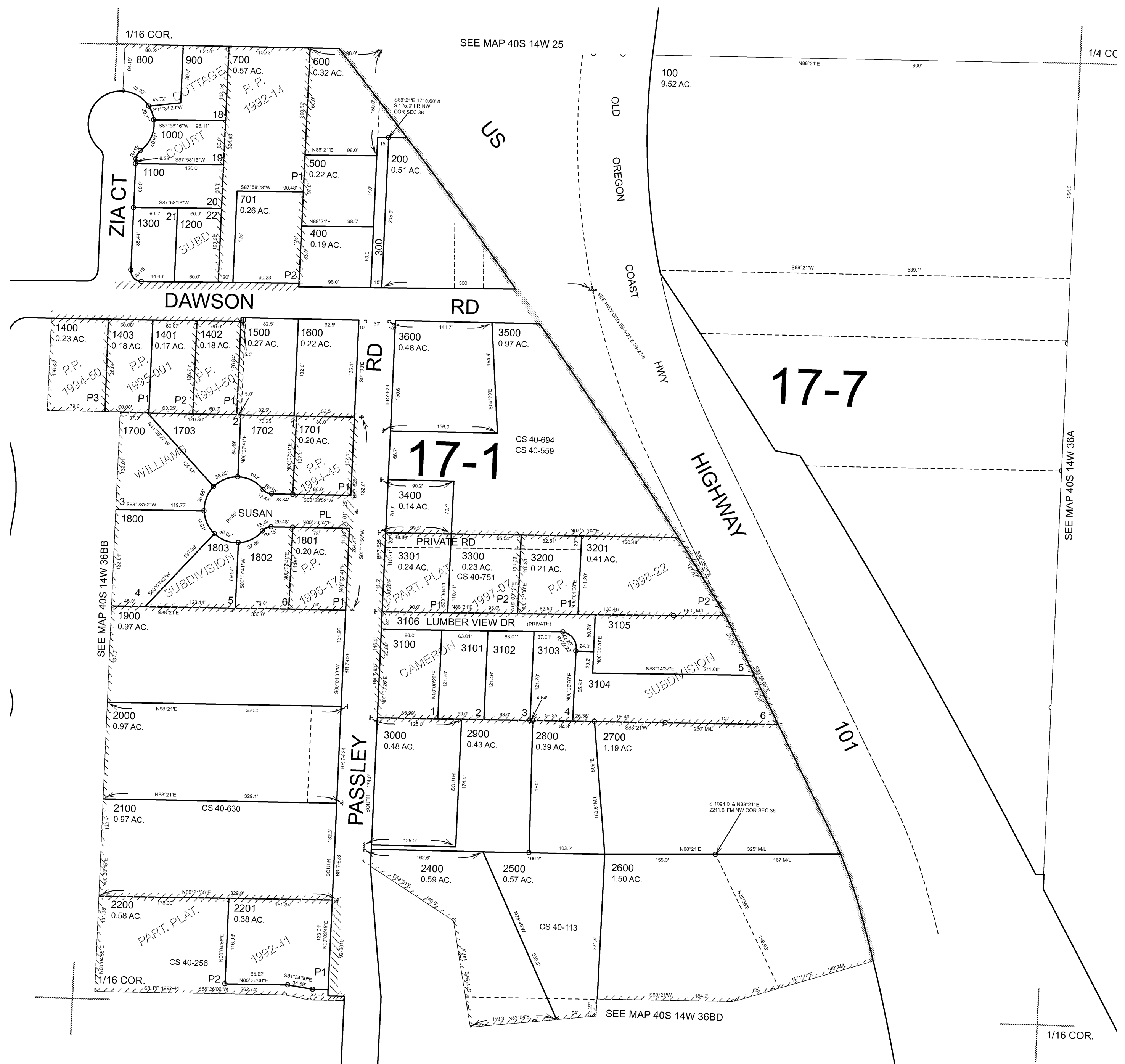
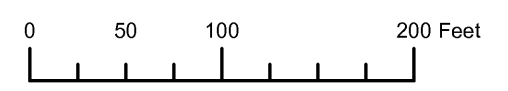


Revised RAA 8/20/2007
BROOKINGS 40S 14W 36BA

THIS MAP WAS PREPARED FOR
ASSESSMENT PURPOSE ONLY

NE1/4 NW1/4 SECTION 36 T.40S. R.14W. W.M.
CURRY COUNTY
1" = 100'

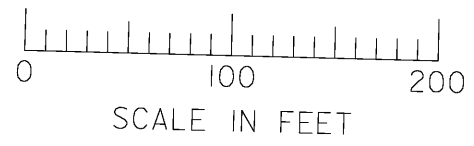
40S 14W 36BA
BROOKINGS
CANCELLED NO.
2300



THIS MAP WAS PREPARED FOR
ASSESSMENT PURPOSE ONLY

NE1/4 NW1/4 SEC. 36 T.40S. R14W. WM
CURRY COUNTY

40 14 36BA
BROOKINGS



CANCELLED NO.
2300

SEE MAP 40 14 36A

SEE MAP 40 14 36BB

SEE MAP 40 14 36D

Revised
6/6/2006 RAA
40 14 36BA
BROOKINGS

