

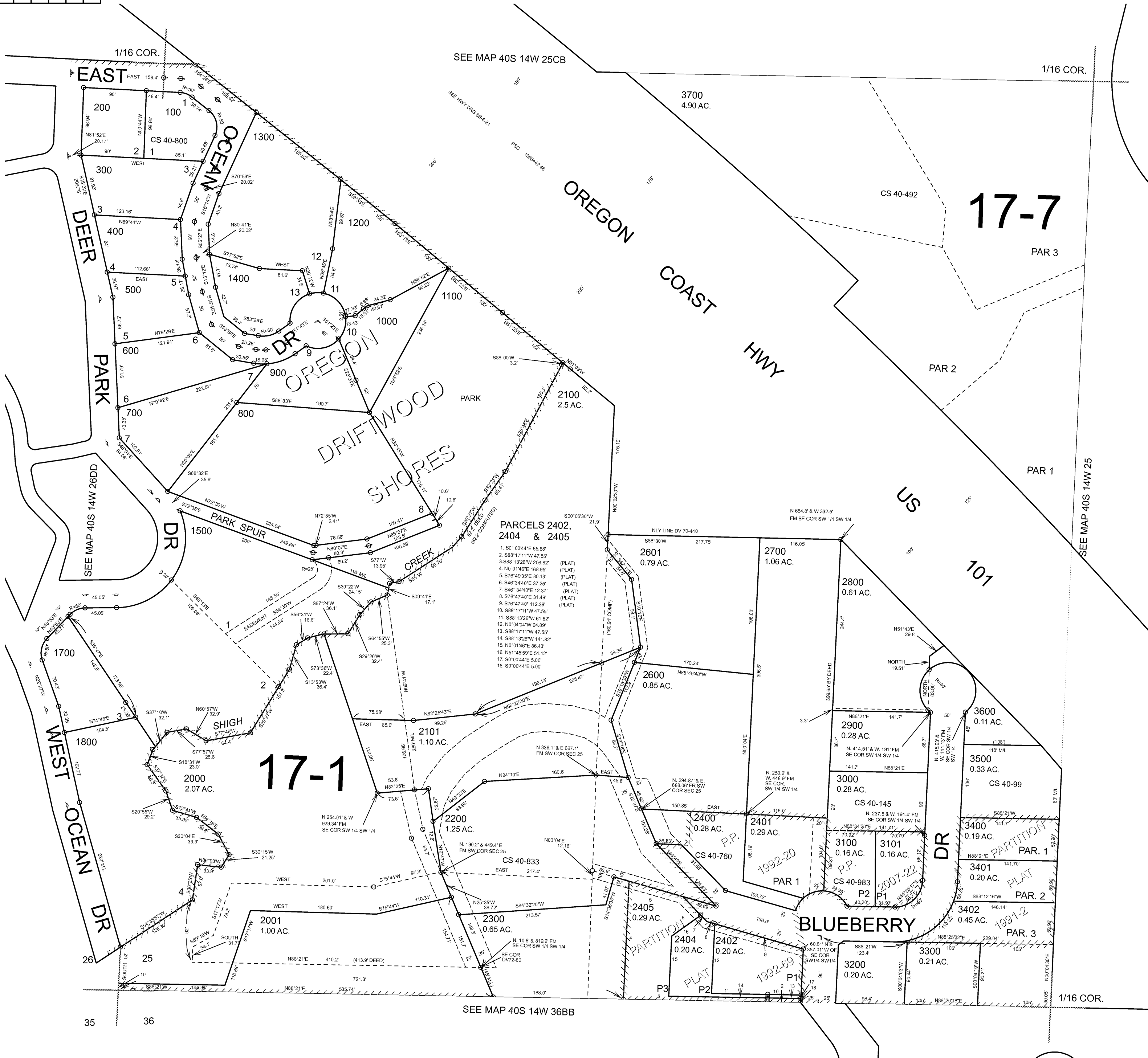
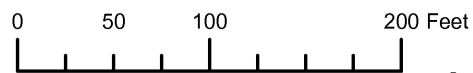
THIS MAP WAS PREPARED FOR ASSESSMENT PURPOSE ONLY

# SW1/4 SW1/4 SECTION 25 T.40S. R.14W. W.M. CURRY COUNTY

1" = 100'

## 40S 14W 25CC

CANCELLED NO.  
1600  
1900U1  
1900U2  
1900  
1901  
2002  
2003  
2004  
2403  
2500  
2501  
2700U1  
2700U2



PARCELS 2402, 2404 & 2405

1. S0°00'44"E 65.88'
2. S88°17'11"W 47.55'
3. S88°13'26"W 206.62'
4. N0°01'40"E 168.99'
5. S76°49'55"E 80.13'
6. S46°34'40"E 37.25'
7. S46°34'40"E 12.37'
8. S76°47'40"E 31.49'
9. S76°47'40"E 112.39'
10. S88°17'11"W 47.55'
11. S88°13'26"W 61.82'
12. N0°04'04"W 94.89'
13. S88°17'11"W 47.55'
14. S88°13'26"W 141.82'
15. N0°01'40"E 86.43'
16. N51°49'55"E 61.12'
17. S0°00'44"E 5.00'
18. S0°00'44"E 5.00'

Revised RAA  
8/16/2007

## 40S 14W 25CC

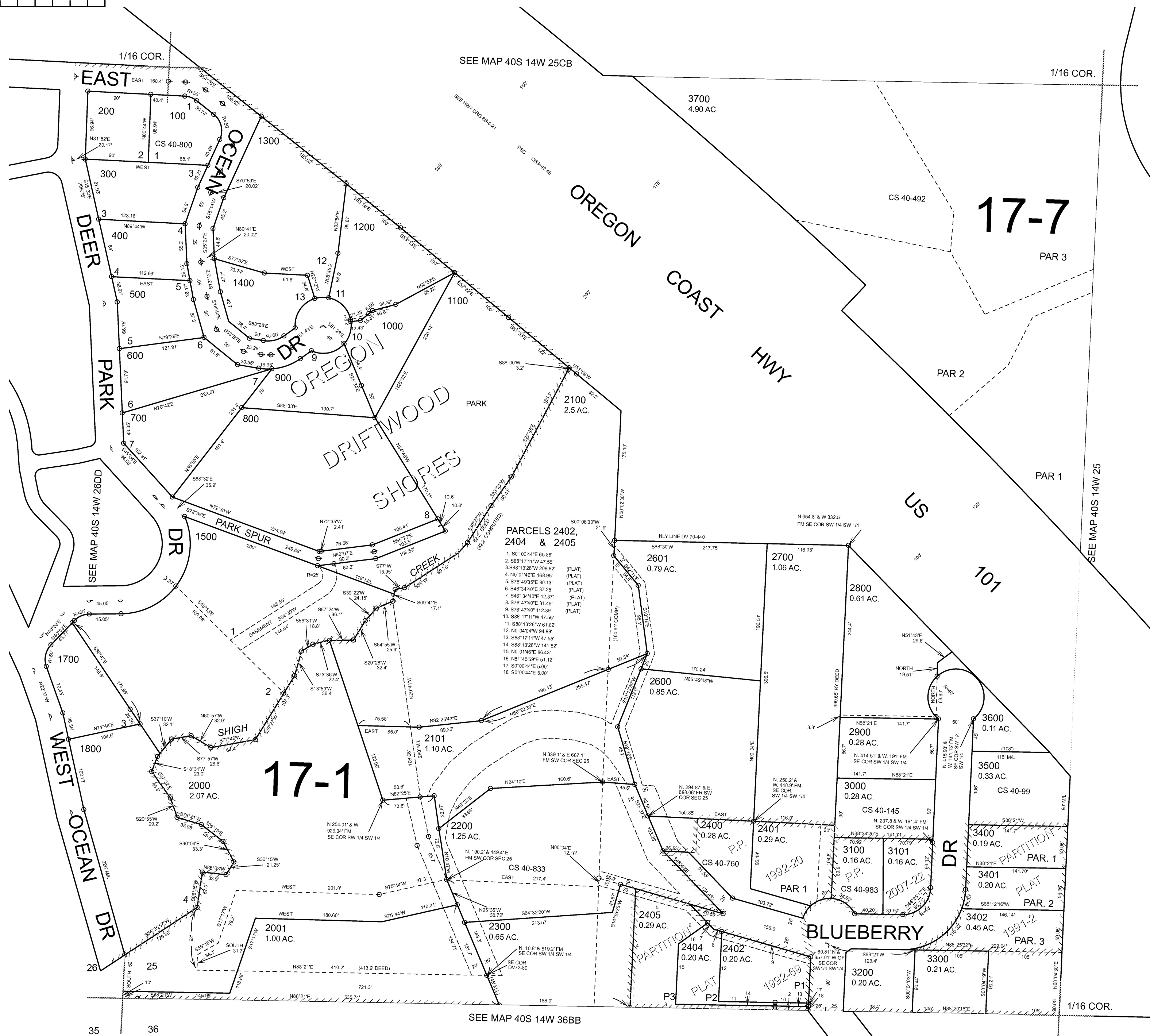
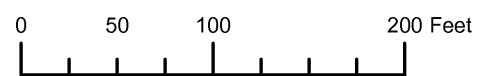
THIS MAP WAS PREPARED FOR ASSESSMENT PURPOSE ONLY

SW1/4 SW1/4 SECTION 25 T.40S. R.14W. W.M. CURRY COUNTY

1" = 100'

40S 14W 25CC

CANCELLED NO.  
1600  
1900U1  
1900U2  
1900  
1901  
2002  
2003  
2004  
2403  
2500  
2501  
2700U1  
2700U2



PARCELS 2402, 2404 & 2405

- 1. S0' 00'44"E 55.89'
- 2. S88° 17'11"W 47.56'
- 3. S88° 15'28"W 206.82' (PLAT)
- 4. N0° 01'46"E 168.89' (PLAT)
- 5. S76° 49'50"E 80.13' (PLAT)
- 6. S46° 34'40"E 37.29' (PLAT)
- 7. S46° 34'40"E 12.37' (PLAT)
- 8. S76° 47'40"E 31.49' (PLAT)
- 9. S76° 47'40"E 12.39'
- 10. S88° 17'11"W 47.56'
- 11. S88° 13'28"W 61.82'
- 12. N0° 04'04"W 94.89'
- 13. S88° 17'11"W 47.56'
- 14. S88° 13'28"W 141.82'
- 15. N0° 01'46"E 86.43'
- 16. N81° 49'50"E 51.12'
- 17. S0° 00'44"E 51.00'
- 18. S0° 00'44"E 51.00'

Revised RAA 8/16/2007

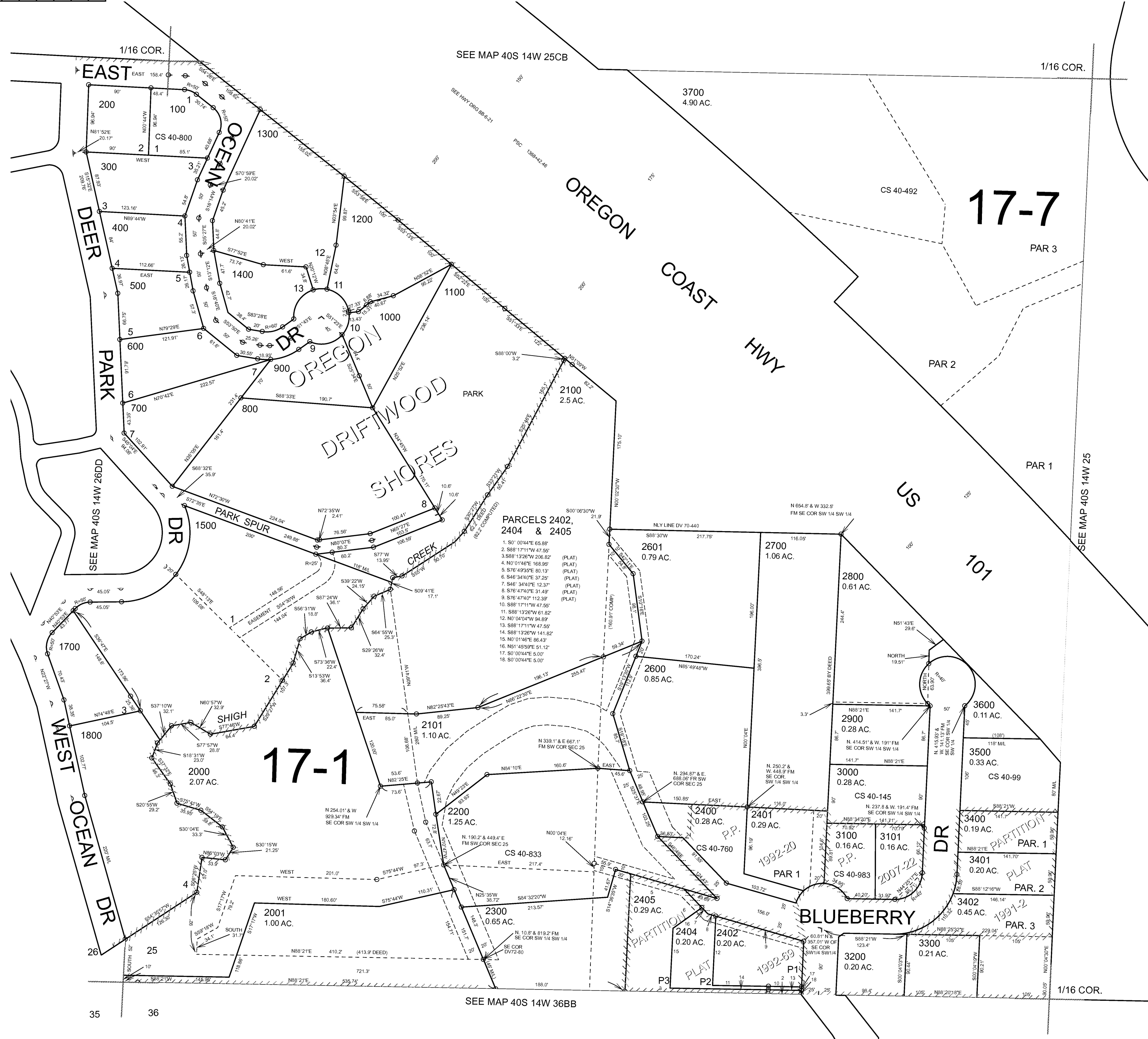
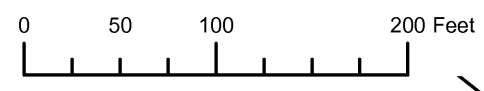
40S 14W 25CC

THIS MAP WAS PREPARED FOR ASSESSMENT PURPOSE ONLY

SW1/4 SW1/4 SECTION 25 T.40S. R.14W. W.M. CURRY COUNTY  
1" = 100'

40S 14W 25CC

CANCELLED NO.  
1600  
1900U1  
1900U2  
1900  
1901  
2002  
2003  
2004  
2403  
2500  
2501  
2700U1  
2700U2



- PARCELS 2402, 2404 & 2405
1. S0' 02'44"E 55.89'
  2. S88° 17'11"W 47.56'
  3. S88° 15'28"W 206.82' (PLAT)
  4. N0° 01'46"E 168.89' (PLAT)
  5. S76° 42'50"E 80.13' (PLAT)
  6. S46° 34'40"E 37.29' (PLAT)
  7. S46° 34'40"E 12.37' (PLAT)
  8. S76° 42'50"E 31.49' (PLAT)
  9. S76° 42'50"E 12.39'
  10. S88° 17'11"W 47.56'
  11. S88° 13'28"W 61.82'
  12. N0° 04'04"W 94.89'
  13. S88° 17'11"W 47.56'
  14. S88° 13'28"W 141.82'
  15. N0° 01'46"E 86.43'
  16. N81° 42'50"E 51.12'
  17. S0° 02'44"E 5.00'
  18. S0° 02'44"E 5.00'

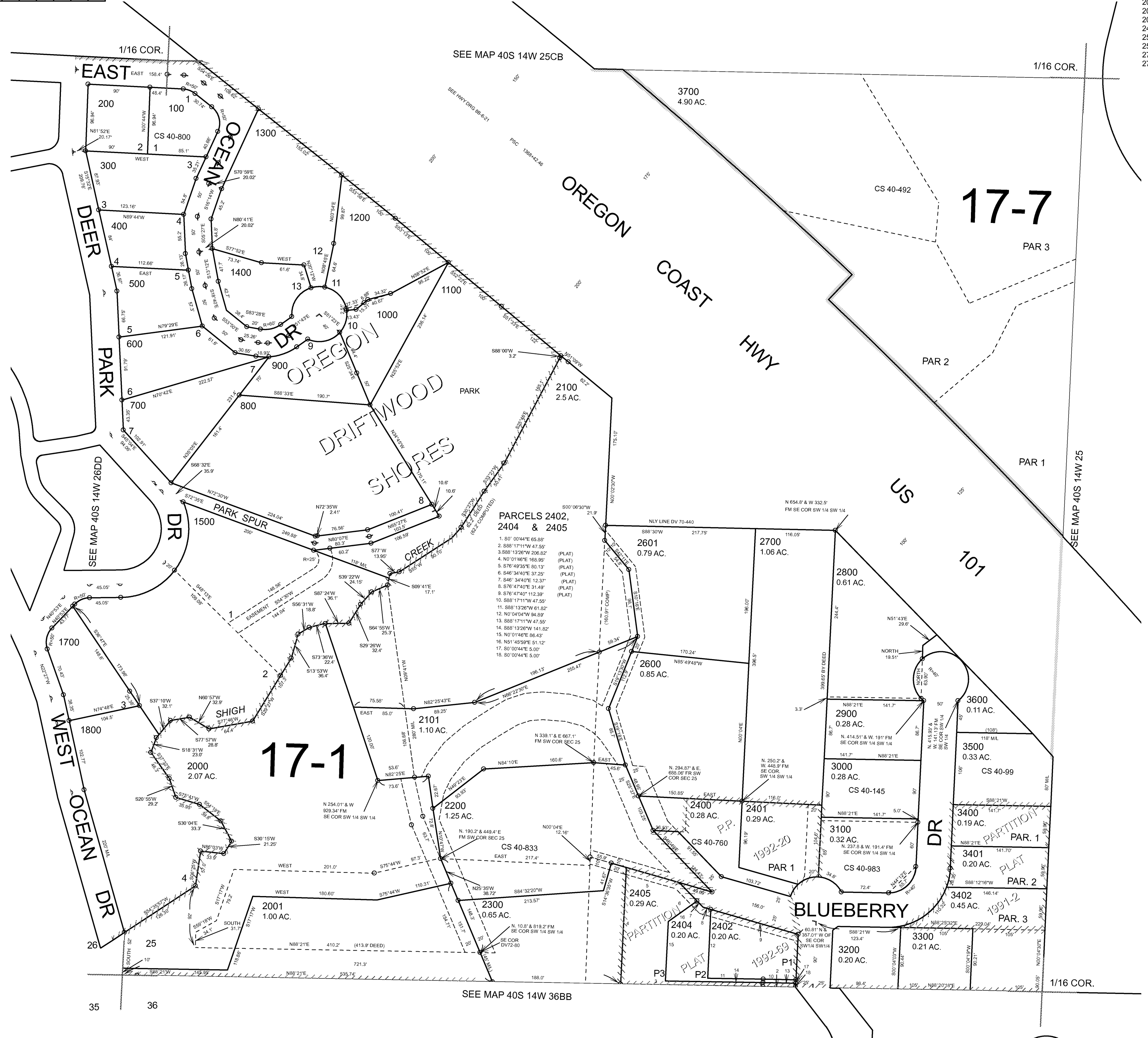
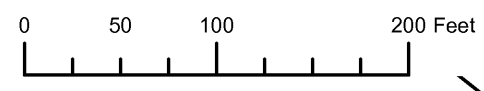
Revised RAA  
8/16/2007

40S 14W 25CC

THIS MAP WAS PREPARED FOR ASSESSMENT PURPOSE ONLY

SW1/4 SW1/4 SECTION 25 T.40S. R.14W. W.M. CURRY COUNTY  
1" = 100'

40S 14W 25CC  
CANCELLED NO.  
1600  
1900U1  
1900U2  
1900  
1901  
2002  
2003  
2004  
2403  
2500  
2501  
2700U1  
2700U2



PARCELS 2402, 2404 & 2405

- 1. S0° 02'44"E 65.85'
- 2. S88° 17'11"W 47.58'
- 3. S88° 13'26"W 206.82' (PLAT)
- 4. N0° 01'46"E 168.85' (PLAT)
- 5. S76° 49'25"E 80.13' (PLAT)
- 6. S46° 34'40"E 37.25' (PLAT)
- 7. S46° 34'40"E 12.37' (PLAT)
- 8. S76° 47'40"E 31.49' (PLAT)
- 9. S76° 47'40"E 12.39' (PLAT)
- 10. S88° 17'11"W 47.55'
- 11. S88° 13'26"W 61.82'
- 12. N0° 04'04"W 84.89'
- 13. S88° 17'11"W 47.55'
- 14. S88° 13'26"W 141.82'
- 15. N0° 01'46"E 86.43'
- 16. N51° 49'59"E 51.12'
- 17. S0° 00'44"E 5.00'
- 18. S0° 00'44"E 5.00'

Revised RAA  
8/20/2006

40S 14W 25CC



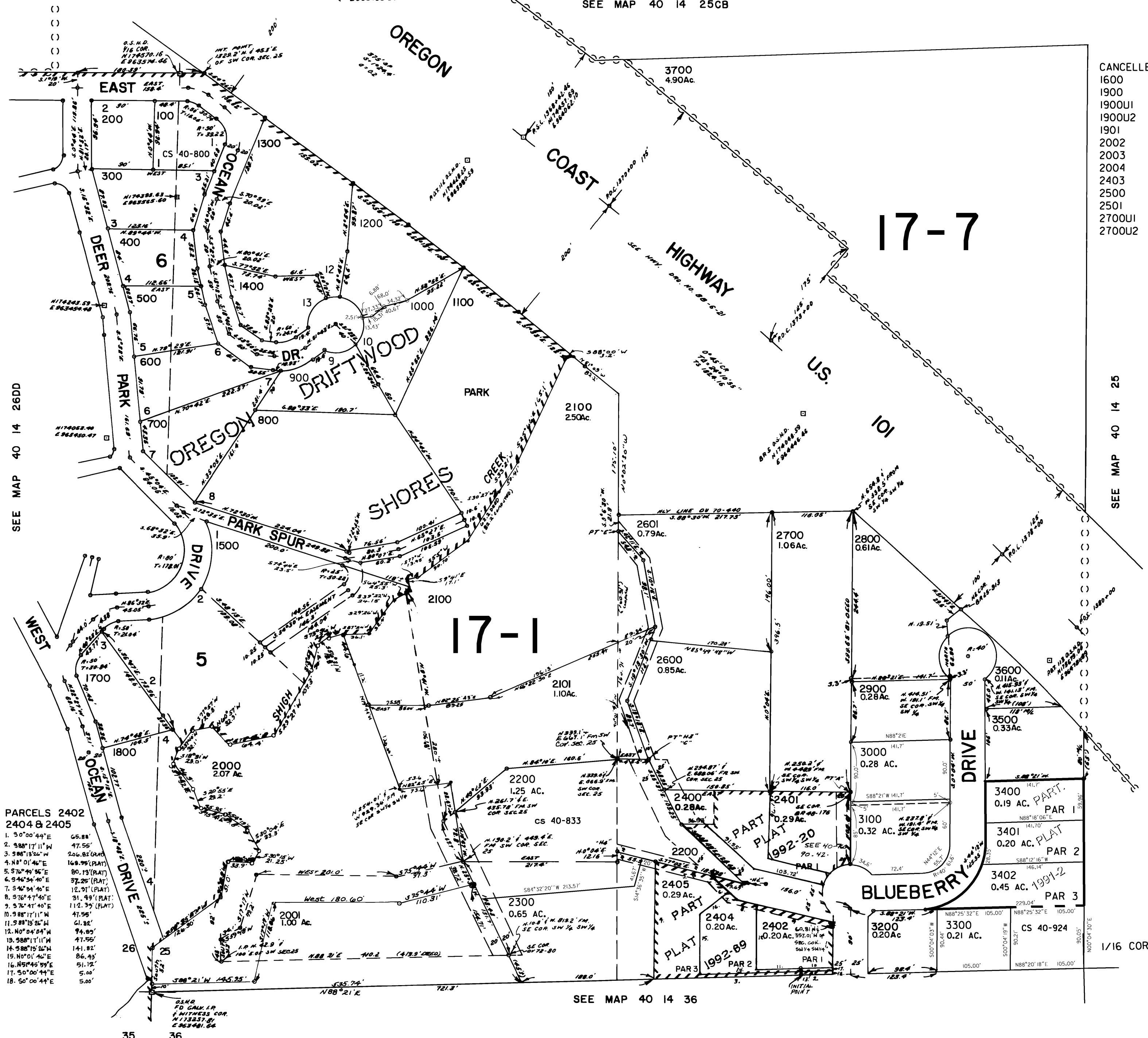
THIS MAP WAS PREPARED FOR ASSESSMENT PURPOSE ONLY

SW1/4 SW1/4 SEC. 25 T.40S. R.14W. W.M. CURRY COUNTY

40 14 25CC

1" = 100'

SEE MAP 40 14 25CB



PARCELS 2402 2404 & 2405

1. 5°00'44"E	65.88'
2. 588°17'11"W	47.55'
3. 588°13'26"W	206.82' (PLAT)
4. N8°01'46"E	169.99' (PLAT)
5. 576°49'56"E	80.19' (PLAT)
6. 546°54'40"E	37.25' (PLAT)
7. 546°54'40"E	12.91' (PLAT)
8. 576°47'40"E	31.49' (PLAT)
9. 576°47'40"E	112.39' (PLAT)
10. 988°17'11"W	47.55'
11. 988°13'26"W	61.82'
12. N0°04'04"W	94.85'
13. 588°17'11"W	47.55'
14. 588°13'26"W	141.92'
15. N0°01'46"E	86.43'
16. N8°04'59"E	51.12'
17. 5°00'44"E	5.00'
18. 5°00'44"E	5.00'

CANCELLED NO'S  
 1600  
 1900  
 1900U1  
 1900U2  
 1901  
 2002  
 2003  
 2004  
 2403  
 2500  
 2501  
 2700U1  
 2700U2

SEE MAP 40 14 25

SEE MAP 40 14 36