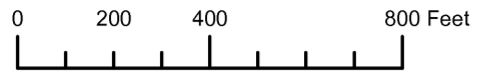


THIS MAP WAS PREPARED FOR ASSESSMENT PURPOSE ONLY

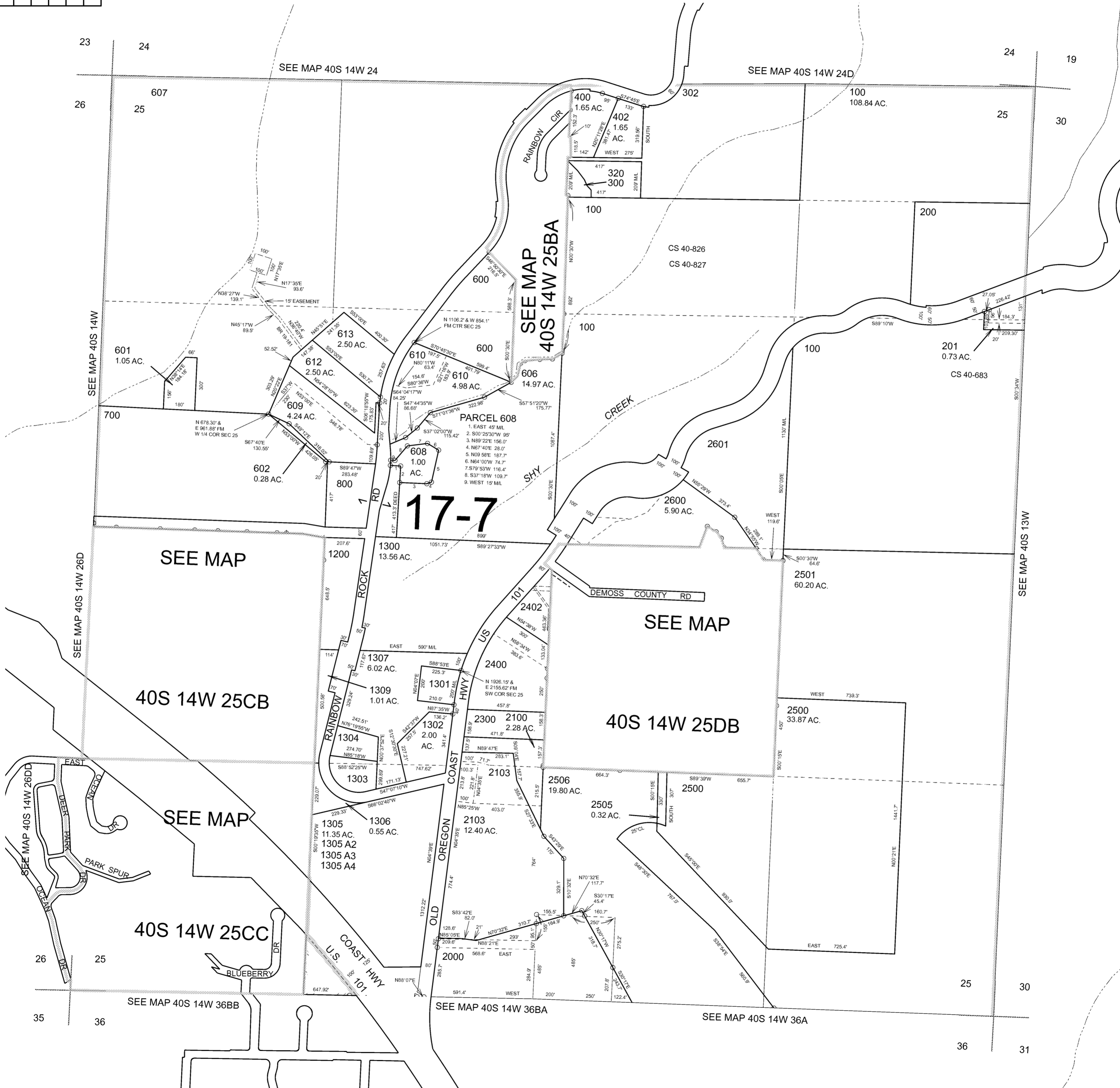
SECTION 25 T.40S. R.14W. W.M. CURRY COUNTY

1" = 400'

40S 14W 25 & INDEX

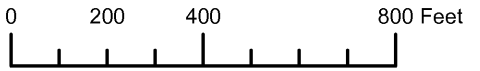


- CANCELLED NO.
- 101
- 102
- 202
- 301
- 401
- 499
- 500
- 603 THRU 605
- 701
- 900 THRU 924
- 1100
- 1299
- 1300A1
- 1305U1
- 1305U2
- 1305A1
- 1308
- 1400 THRU 1908
- 2000A1
- 2001 THRU 2003
- 2100A1
- 2101
- 2200
- 2401
- 2502 THRU 2504
- 2602
- 2603
- 1307A1



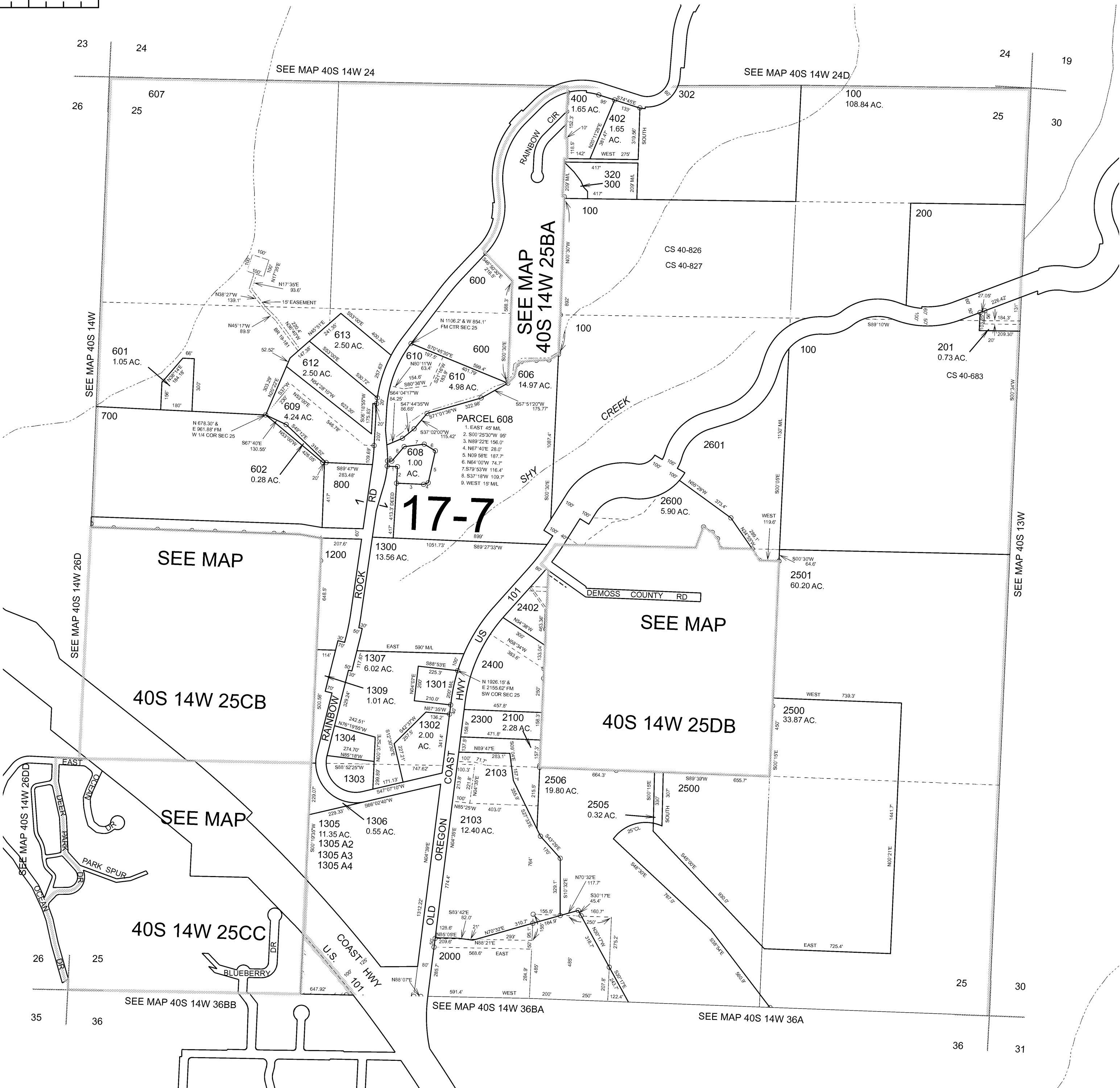
17-7

THIS MAP WAS PREPARED FOR ASSESSMENT PURPOSE ONLY



SECTION 25 T.40S. R.14W. W.M. CURRY COUNTY  
1" = 400'

40S 14W 25 & INDEX



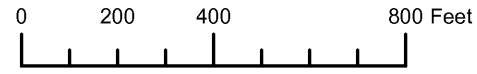
- CANCELLED NO.
- 101
- 102
- 202
- 301
- 401
- 499
- 500
- 603 THRU 605
- 701
- 900 THRU 924
- 1100
- 1299
- 1300A1
- 1305U1
- 1305U2
- 1305A1
- 1308
- 1400 THRU 1908
- 2000A1
- 2001 THRU 2003
- 2100A1
- 2101
- 2200
- 2401
- 2502 THRU 2504
- 2602
- 2603
- 1307A1

SECTION 25 T.40S. R.14W. W.M.  
CURRY COUNTY

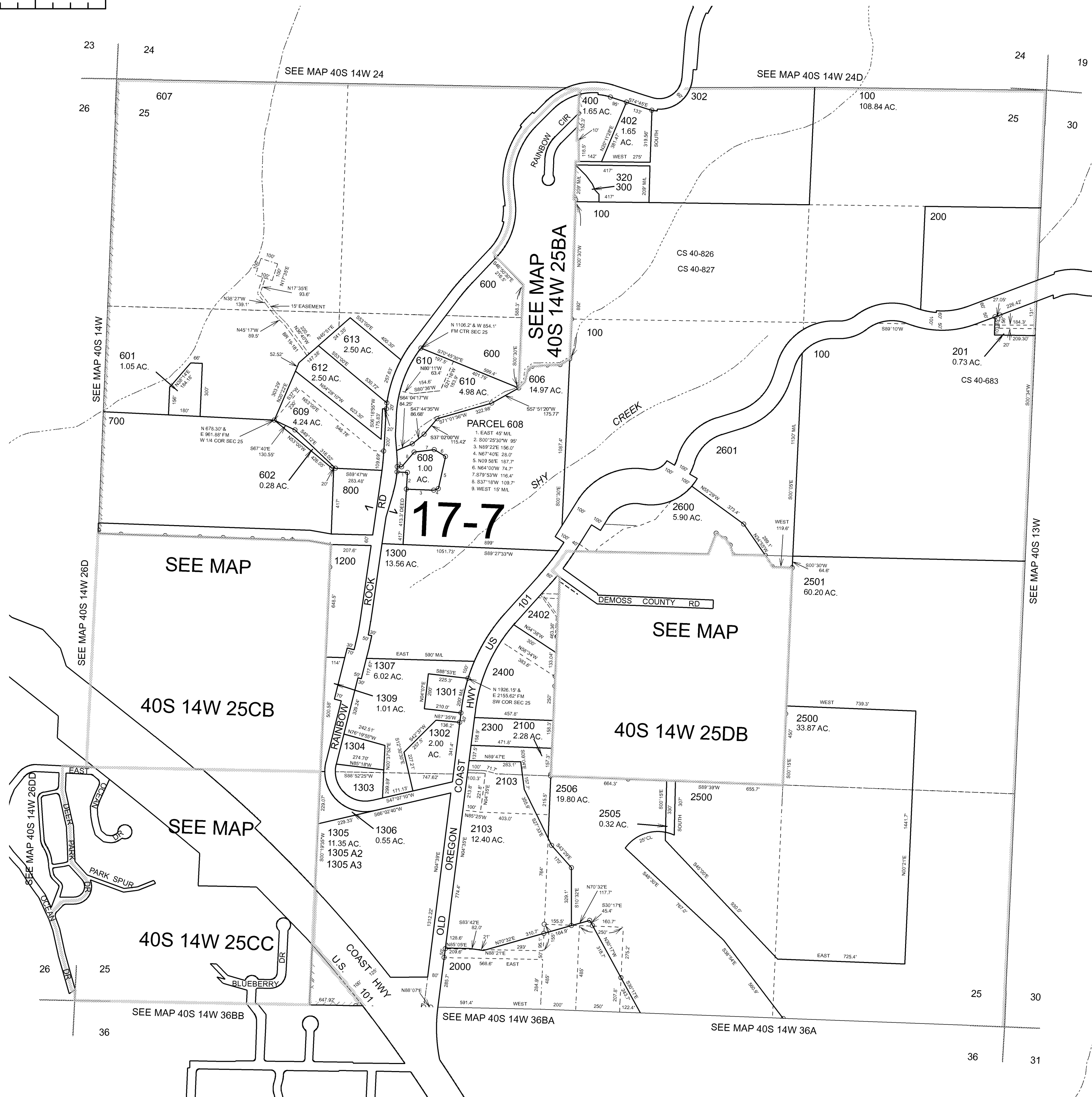
1" = 400'

40S 14W 25  
& INDEX

THIS MAP WAS PREPARED FOR  
ASSESSMENT PURPOSE ONLY



- CANCELLED NO.
- 101
- 102
- 202
- 301
- 401
- 499
- 500
- 603 THRU 605
- 701
- 900 THRU 924
- 1100
- 1299
- 1300A1
- 1305U1
- 1305U2
- 1305A1
- 1308
- 1400 THRU 1908
- 2000A1
- 2001 THRU 2003
- 2100A1
- 2101
- 2200
- 2401
- 2502 THRU 2504
- 2602
- 2603
- 1307A1



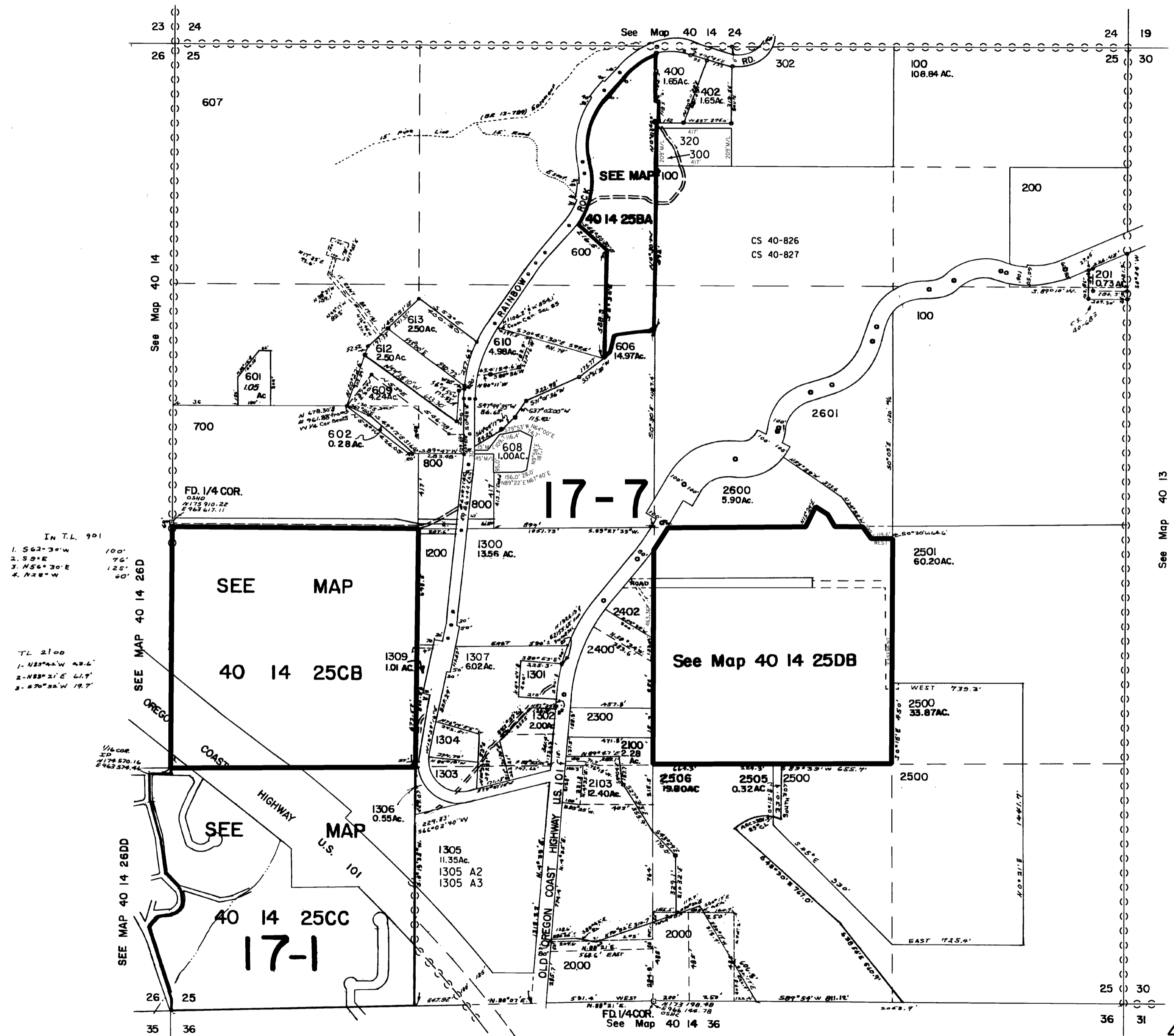
THIS MAP WAS PREPARED FOR  
ASSESSMENT PURPOSE ONLY

SECTION 25 T.40S. R.14W. W.M.  
CURRY COUNTY

1" = 400'

40 14 25  
& INDEX

- CANCELLED NO.
- 101
- 102
- 202
- 301
- 401
- 499
- 500
- 603-605
- 701
- 900-924
- 1100
- 1299
- 1300A1
- 1305U1
- 1305U2
- 1305A1
- 1308
- 1400-1908
- 2000A1
- 2001-2003
- 2100A1
- 2101
- 2200
- 2401
- 2502-2504
- 2602
- 2603
- 1307A1



In T.L. 901  
 1. S62°30'W 100'  
 2. S9°E 76'  
 3. N56°30'E 125'  
 4. N28°W 60'

TL 2100  
 1. N85°44'W 43.6'  
 2. N83°21'E 41.9'  
 3. S70°32'W 19.7'

See Map 40 13

Revised  
 8/7/2006, RAA  
 40 14 25  
 & INDEX

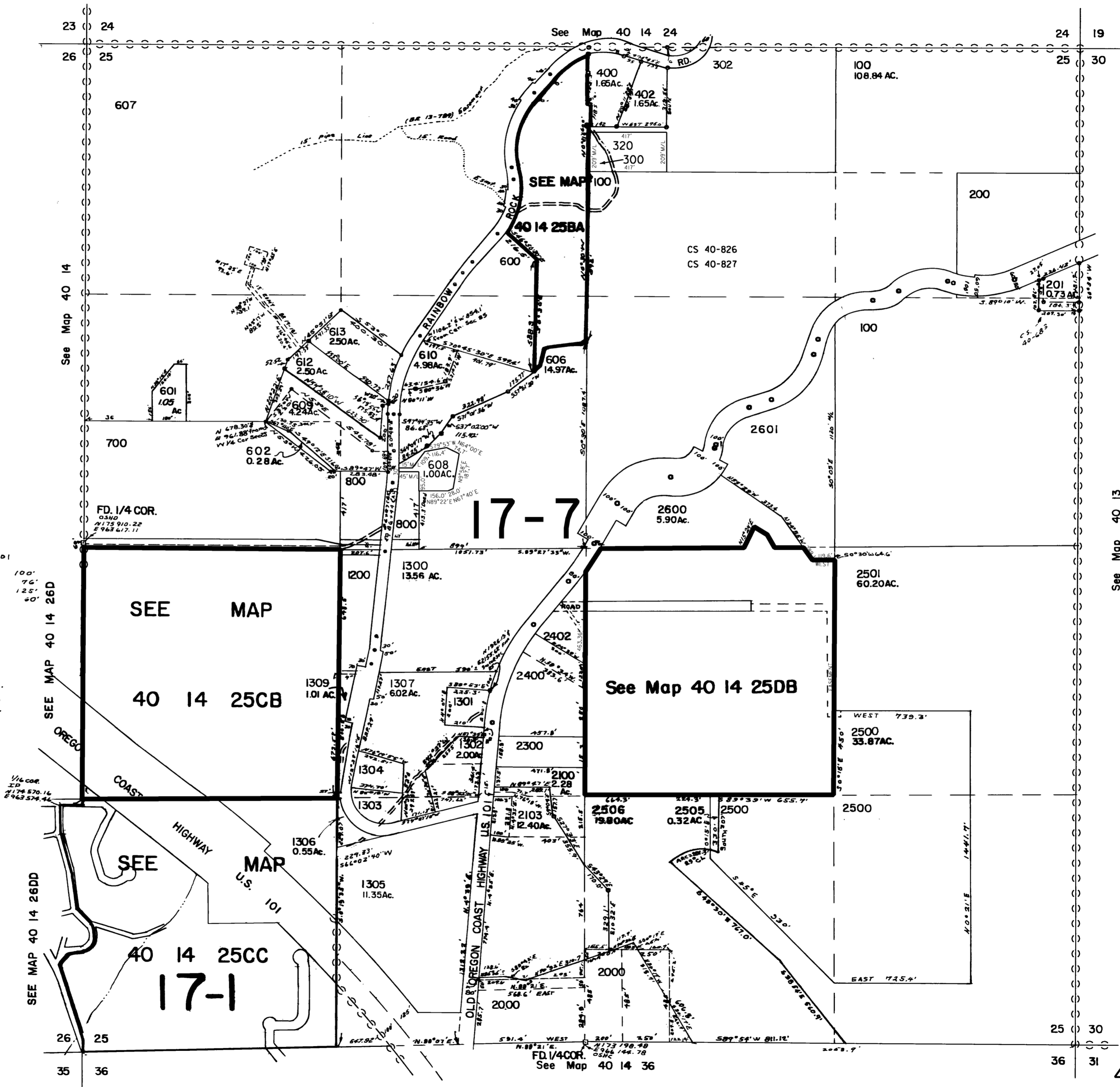
THIS MAP WAS PREPARED FOR  
ASSESSMENT PURPOSE ONLY

SECTION 25 T.40S. R.14W. W.M.  
CURRY COUNTY

1" = 400'

40 14 25  
& INDEX

- CANCELLED NO.  
101  
102  
202  
301  
401  
499  
500  
603-605  
701  
900-924  
1100  
1299  
1300A1  
1305U1  
1305U2  
1305A1  
1308  
1400-1908  
2000A1  
2001-2003  
2100A1  
2101  
2200  
2401  
2502-2504  
2602  
2603  
1307A1



IN T.L. 901  
1. S62°30'W 100'  
2. S9°E 76'  
3. N56°30'E 125'  
4. N28°W 50'

TL 2100  
1. N83°42'W 42.6'  
2. N88°21'E 61.9'  
3. S70°32'W 19.7'

See Map 40 13

See Map 40 14 26DD

See Map 40 14 26D

See Map 40 14 36

Revised  
4/26/2005, DBJ  
40 14 25  
& INDEX