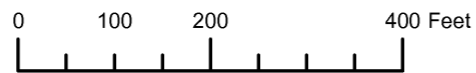


THIS MAP WAS PREPARED FOR ASSESSMENT PURPOSE ONLY

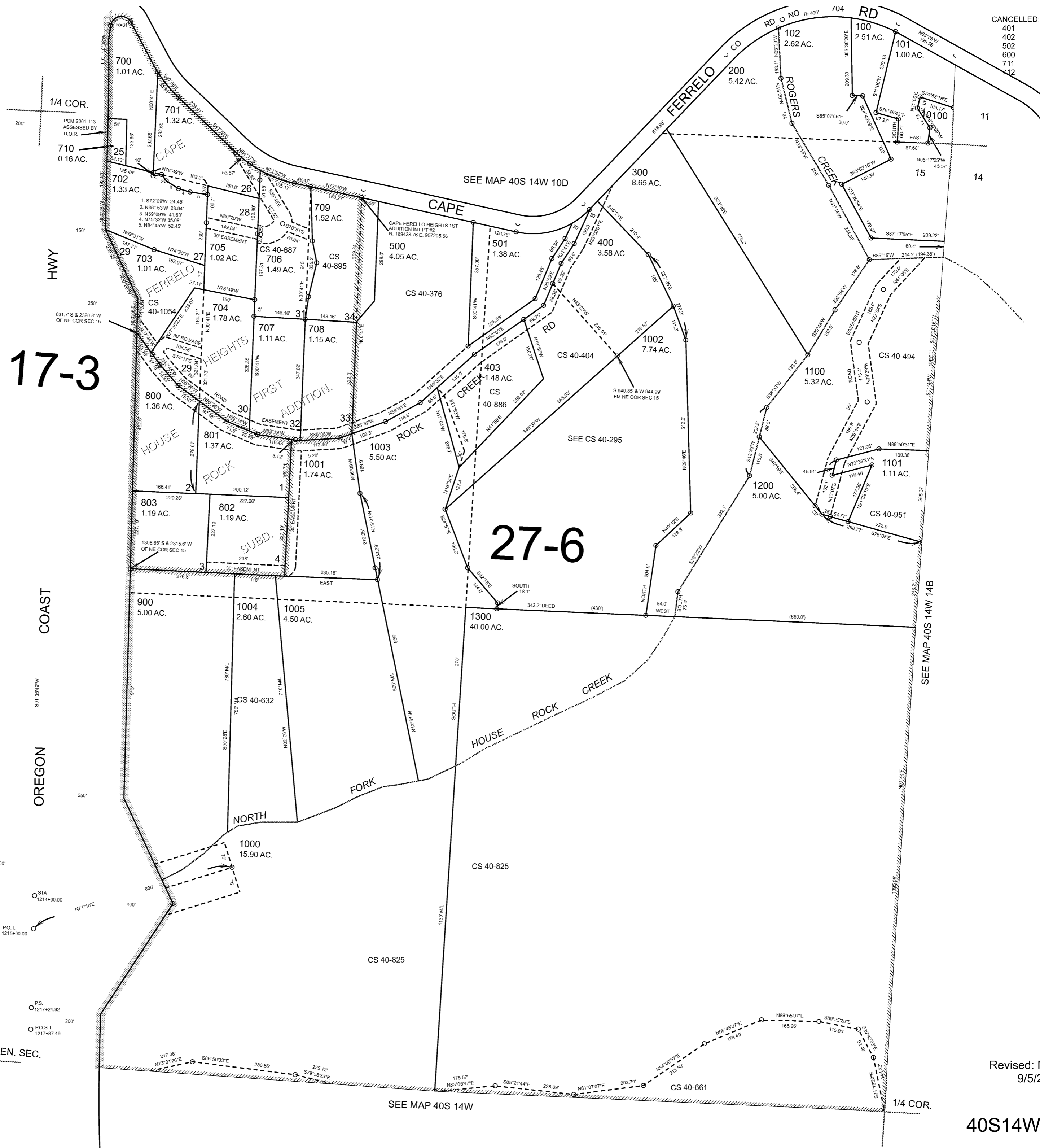


N.E. 1/4 SEC. 15 T.40S. R.14W. W.M. CURRY COUNTY

1" = 200'

40S14W15A

CANCELLED:
401
402
502
600
711
712



SEE MAP 40S 14W

OREGON COAST

CEN. SEC.

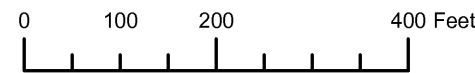
SEE MAP 40S 14W

SEE MAP 40S 14W 14B

Revised: MRT
9/5/2008

40S14W15A

THIS MAP WAS PREPARED FOR ASSESSMENT PURPOSE ONLY

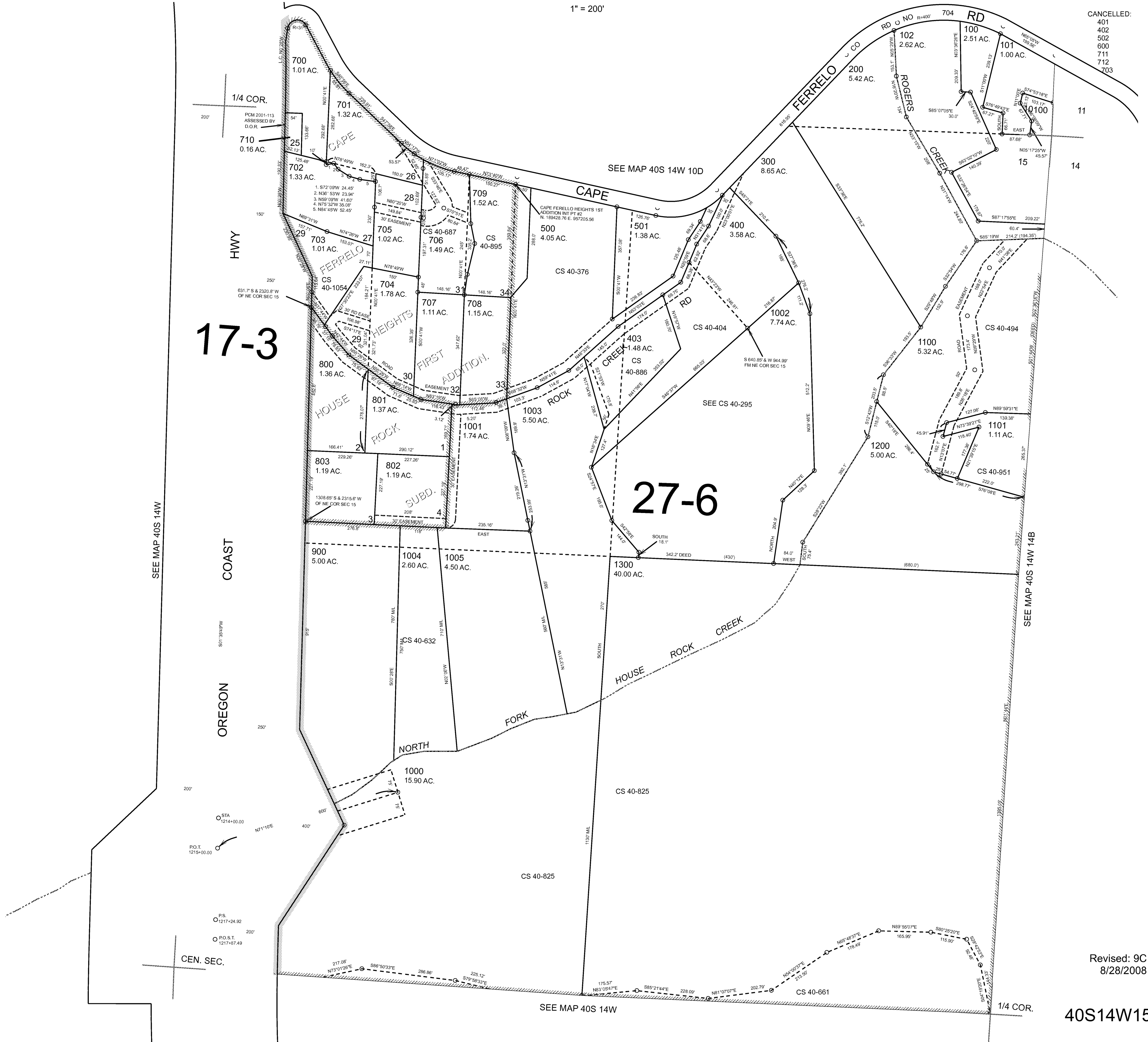


N.E. 1/4 SEC. 15 T.40S. R.14W. W.M. CURRY COUNTY

1" = 200'

40S14W15A

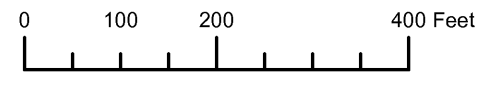
- CANCELLED:
- 401
- 402
- 502
- 600
- 711
- 712
- 703



Revised: 9C 8/28/2008

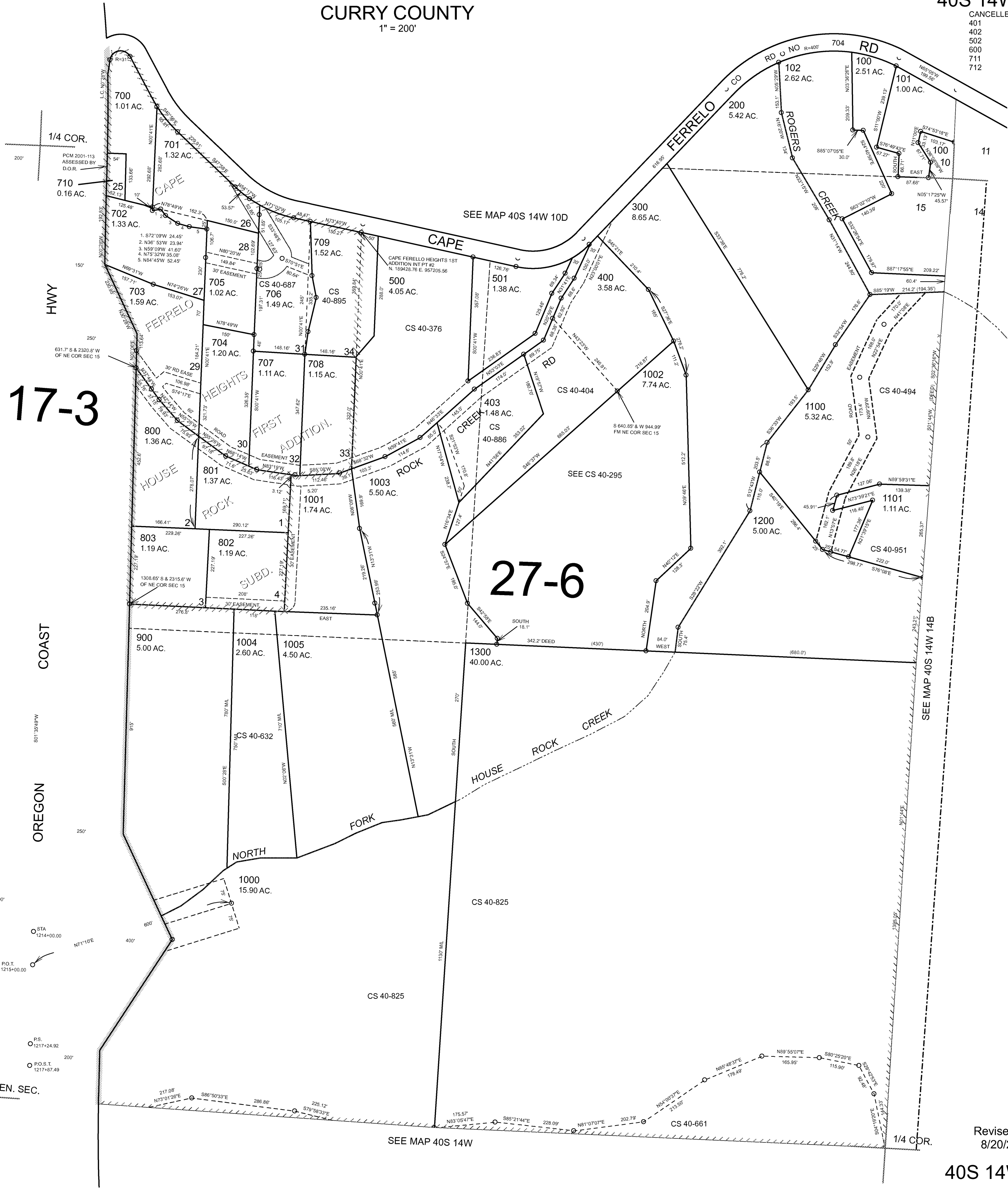
40S14W15A

THIS MAP WAS PREPARED FOR
ASSESSMENT PURPOSE ONLY



NE1/4 SECTION 15 T.40S. R.14W. W.M.
CURRY COUNTY
1" = 200'

40S 14W 15A
CANCELLED NO.
401
402
502
600
711
712



SEE MAP 40S 14W

COAST

OREGON

CEN. SEC.

SEE MAP 40S 14W

1/4 COR.

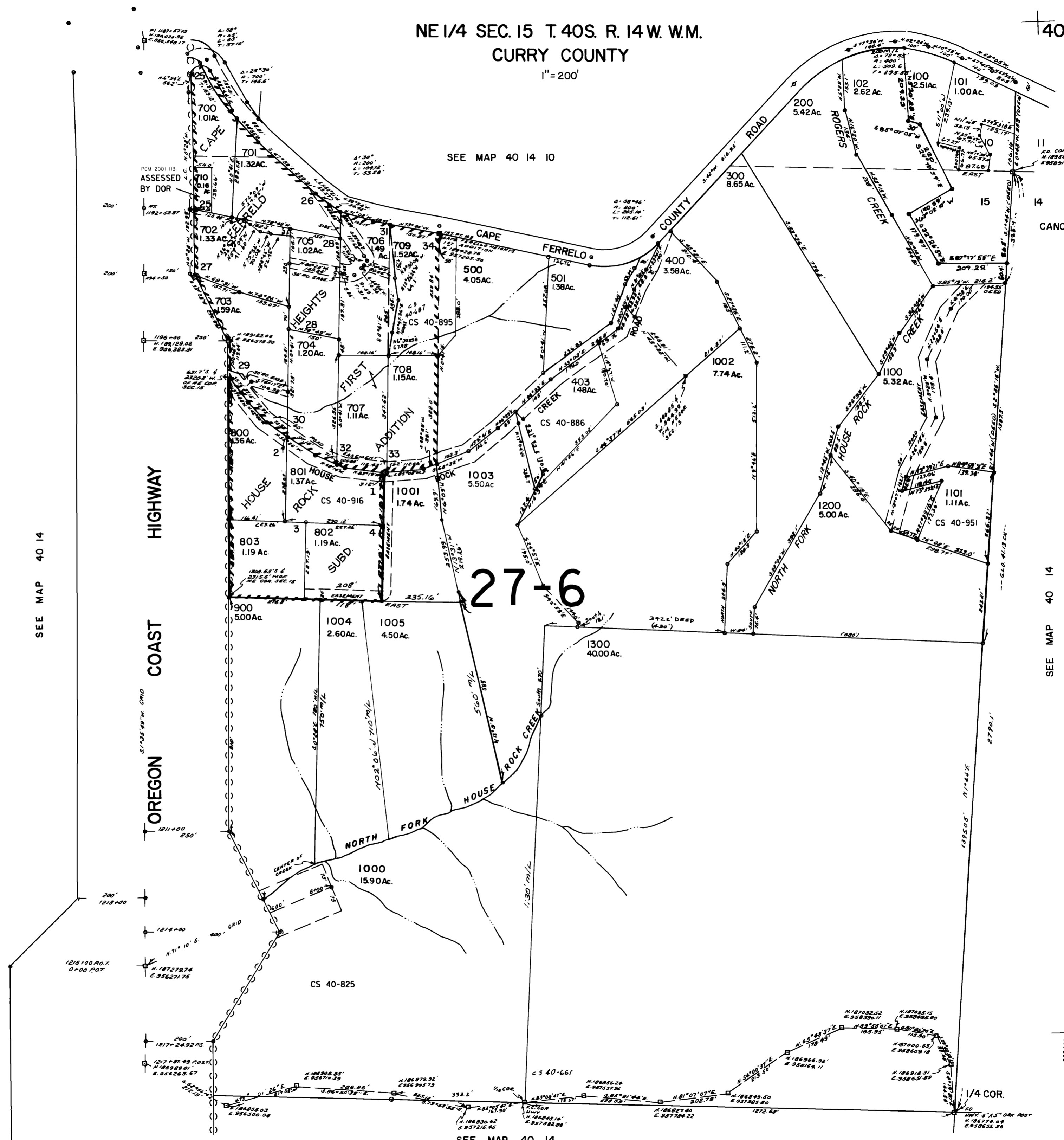
Revised RAA
8/20/2006

40S 14W 15A

THIS MAP WAS PREPARED FOR ASSESSMENT PURPOSE ONLY

NE 1/4 SEC. 15 T. 40S. R. 14W. W.M.
CURRY COUNTY
1" = 200'

40 14 15A



SEE MAP 40 14 10

SEE MAP 40 14

SEE MAP 40 14

27-6

- CANCELLED NO'S
- 600
 - 401
 - 402
 - 711
 - 712
 - 502

1215+00 P.O.T.
0+00 P.O.T.

1217+24.245
1217+21.49 P.O.T.
1217+21.49 P.O.T.

CS 40-825

SFF MAP 40 14

Revised
4/28/2005, DBJ
40 14 15A

1/4 COR.
1/4 COR.
1/4 COR.