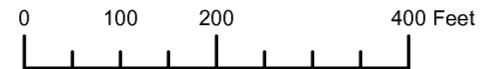


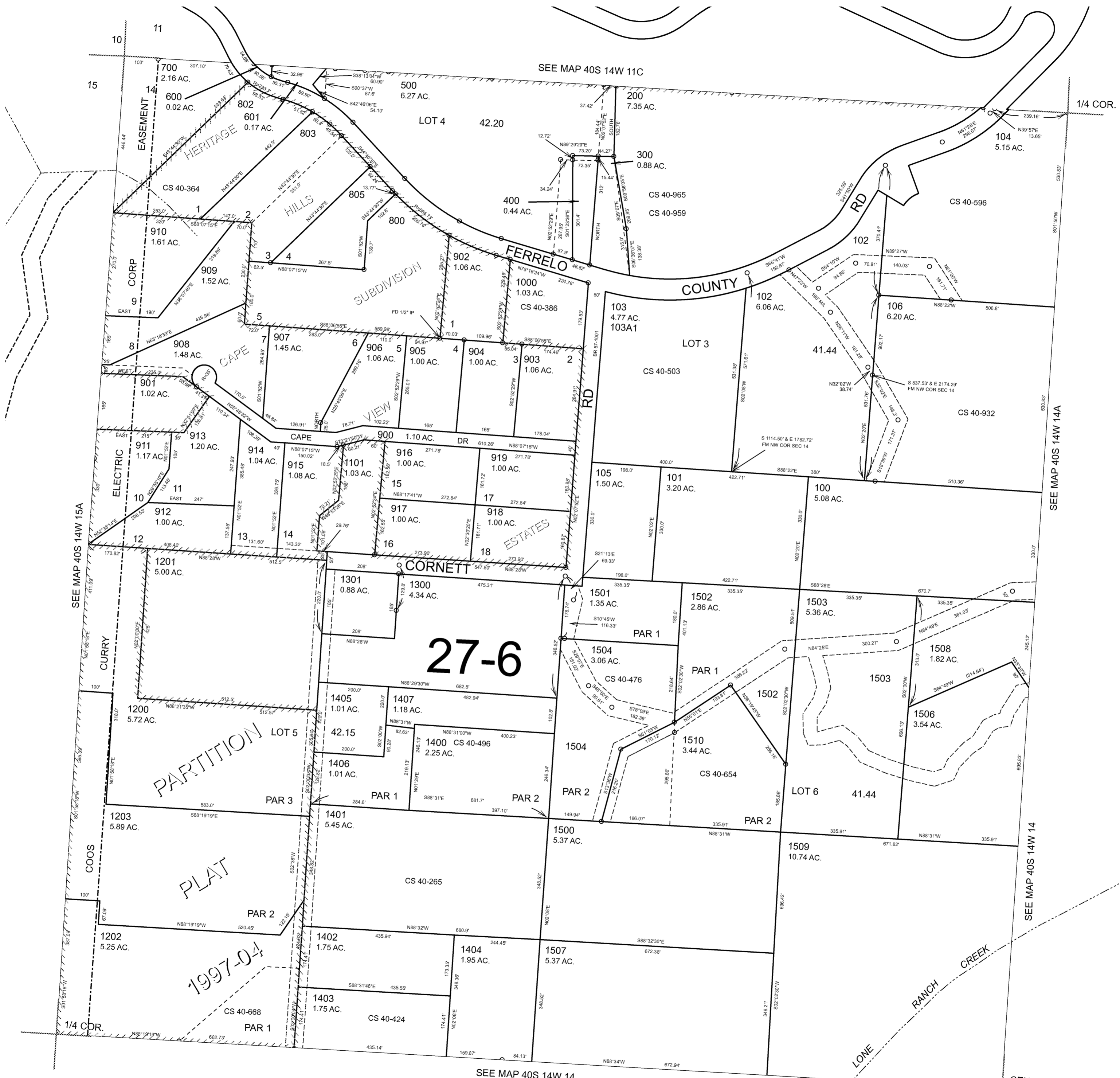
THIS MAP WAS PREPARED FOR ASSESSMENT PURPOSE ONLY



NW1/4 SECTION 14 T.40S. R.14W. W.M. CURRY COUNTY 1" = 200'

40S 14W 14B

- CANCELLED NO.
- 301
- 401
- 501
- 602
- 801
- 804
- 920
- 921
- 922
- 923
- 1100
- 1102
- 1302
- 1505



SEE MAP 40S 14W 14

CEN. SEC.

Revised RAA 8/20/2006

40S 14W 14B

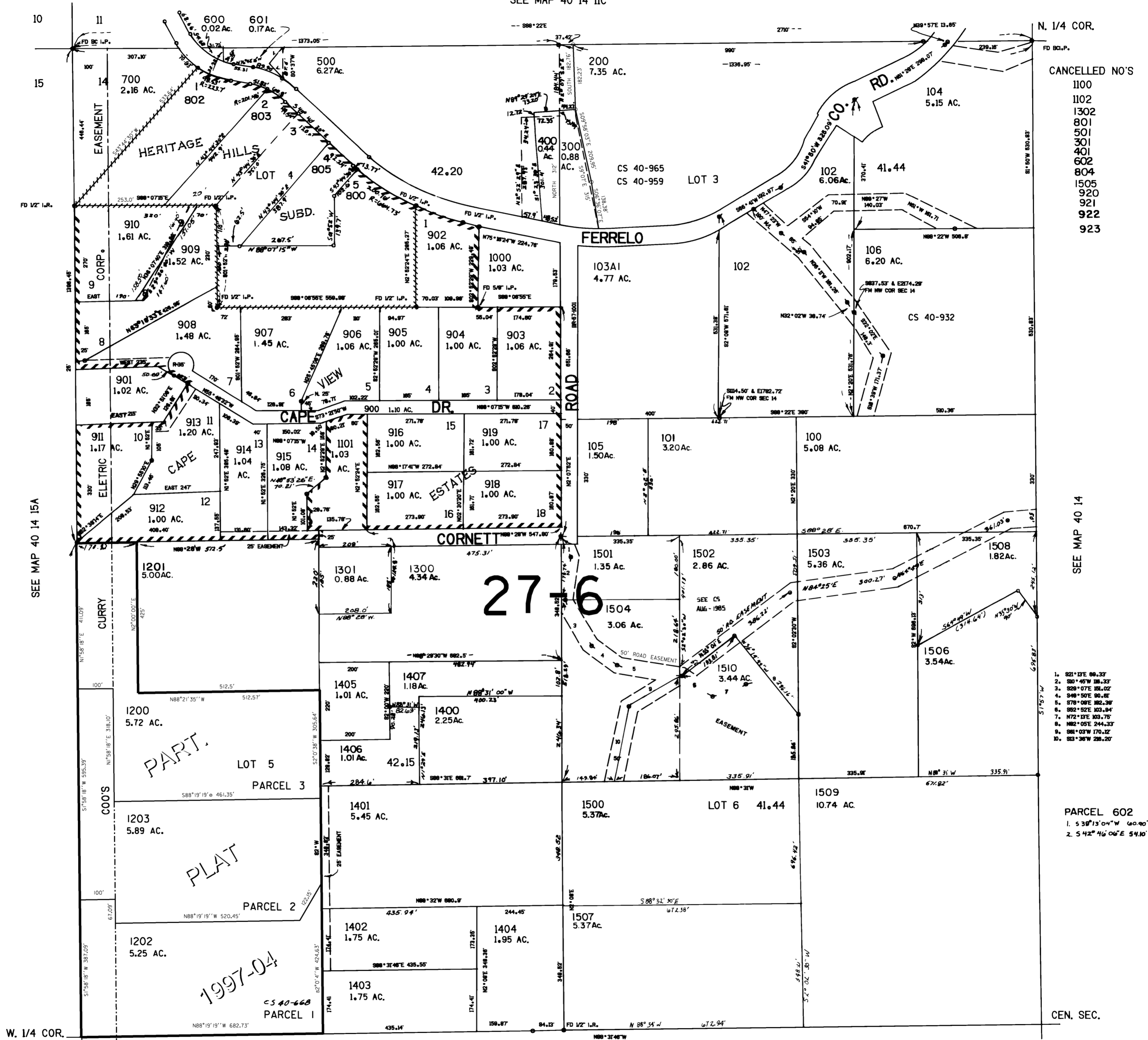
THIS MAP WAS PREPARED FOR ASSESSMENT PURPOSE ONLY

NW1/4 SEC. 14 T.40S. R.14W. W.M.
CURRY COUNTY

40 14 14B

1"=200'

SEE MAP 40 14 IIC



- CANCELLED NO'S
- 1100
 - 1102
 - 1302
 - 801
 - 501
 - 301
 - 401
 - 602
 - 804
 - 1505
 - 920
 - 921
 - 922
 - 923

SEE MAP 40 14

- 1. S21°12'E 88.33'
- 2. S3°45'W 181.23'
- 3. S28°07'E 181.02'
- 4. S48°50'E 90.81'
- 5. S78°08'E 102.38'
- 6. S82°02'E 103.84'
- 7. N72°57'E 103.78'
- 8. N82°05'E 244.33'
- 9. S81°03'W 170.12'
- 10. S3°38'W 286.20'

PARCEL 602

- 1. S38°13'04"W 60.90'
- 2. S42°46'06"E 54.10'

CEN. SEC.

SEE MAP 40 14

40 14 14B

Revised
7/7/2005, DBJ