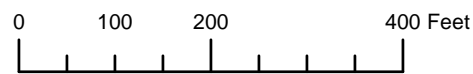


THIS MAP WAS PREPARED FOR ASSESSMENT PURPOSE ONLY

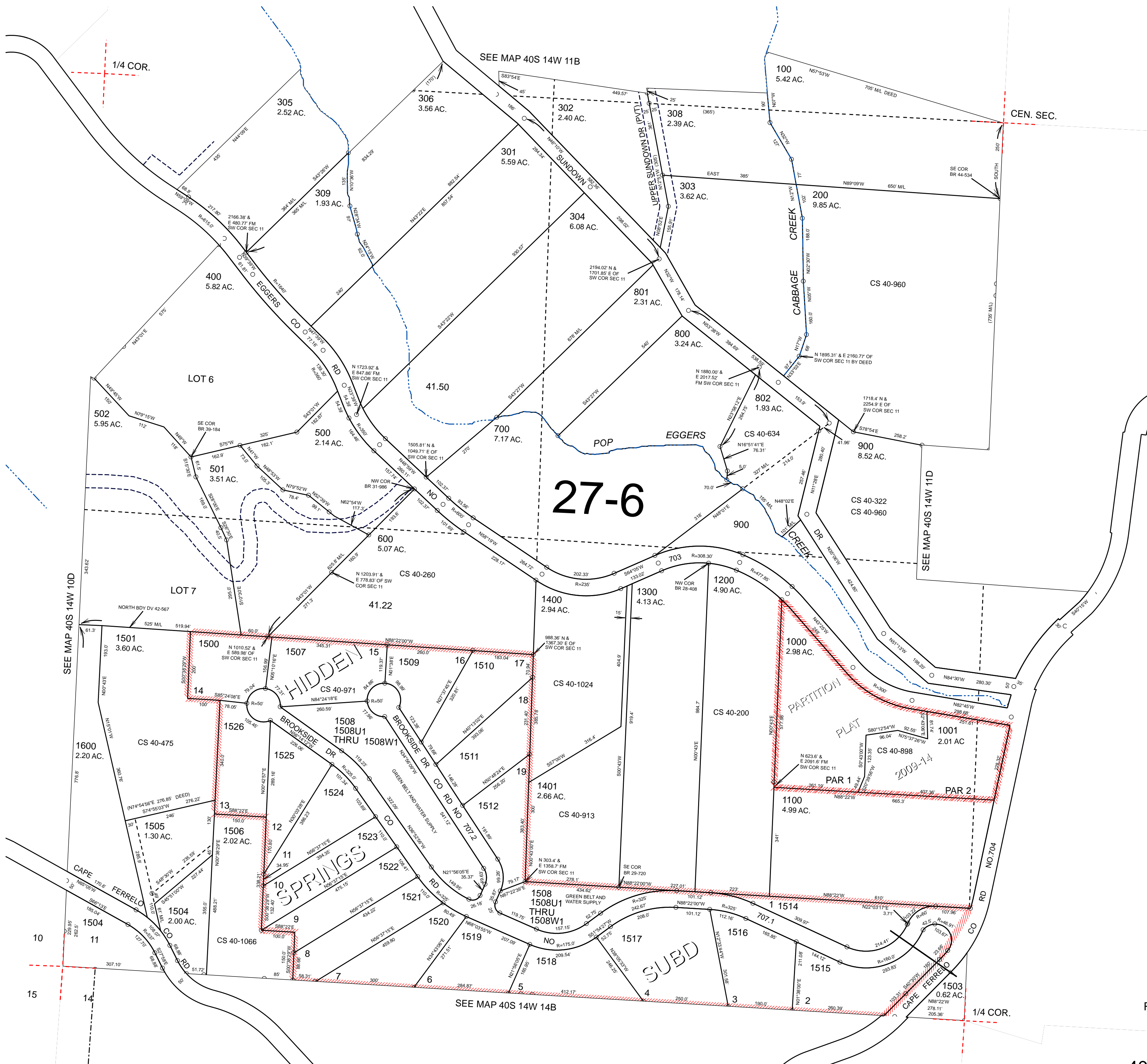


S.W.1/4 SEC.11 T.40S. R.14W. W.M. CURRY COUNTY

1" = 200'

40S14W11C

CANCELLED:
300
307
901
1502
1527



27-6

SEE MAP 40S 14W 14B

SEE MAP 40S 14W 11D

SEE MAP 40S 14W 10D

Revised: RAA
12/1/2009

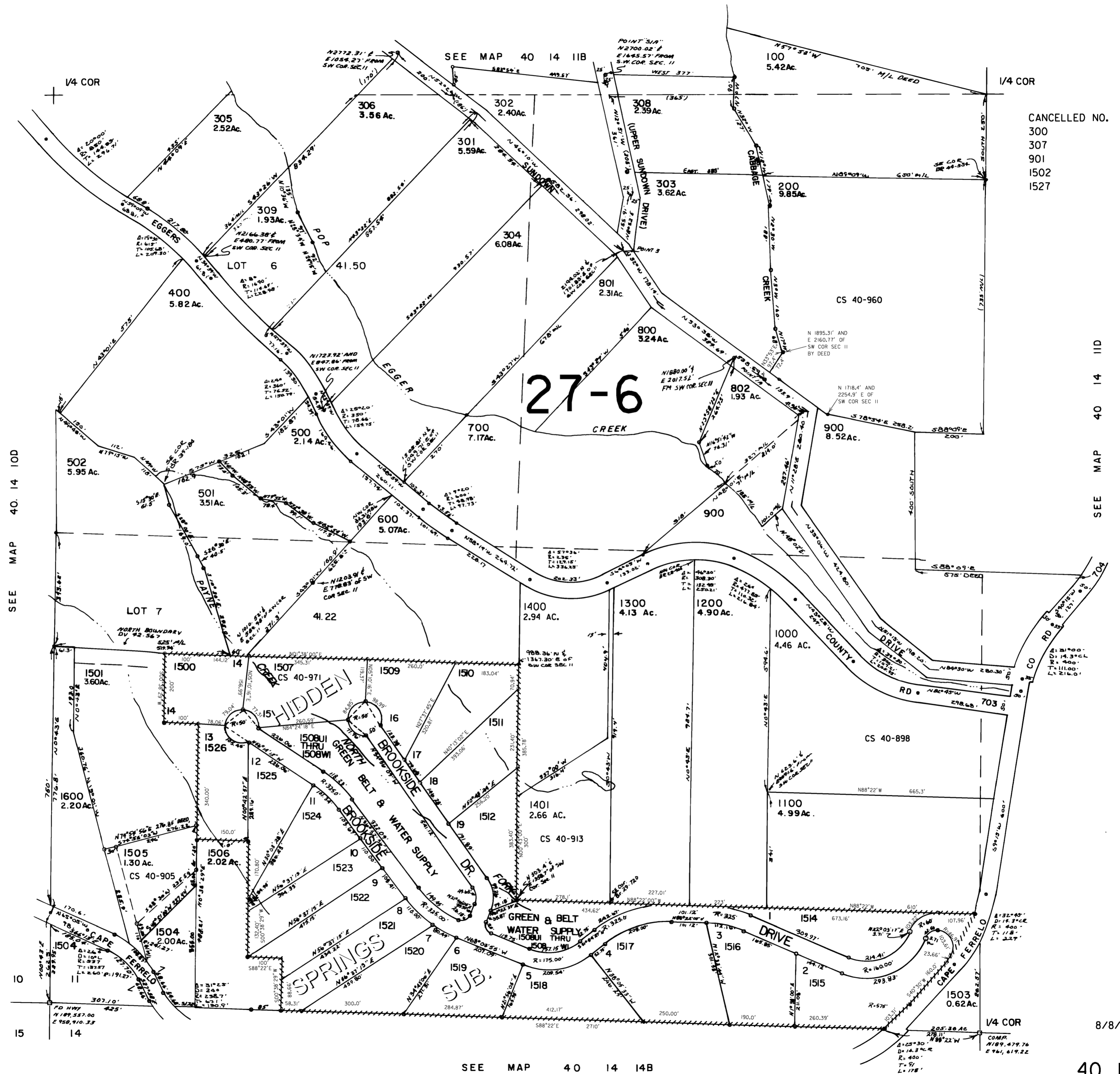
40S14W11C

THIS MAP WAS PREPARED FOR
ASSESSMENT PURPOSE ONLY

SW1/4 SEC. II T.40S. R.14W. W.M.
CURRY COUNTY

40 14 IIC

1" = 200'



CANCELLED NO.
300
307
901
1502
1527

SEE MAP 40 14 IIC

Revised
8/8/2005, DBJ

40 14 IIC