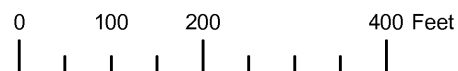


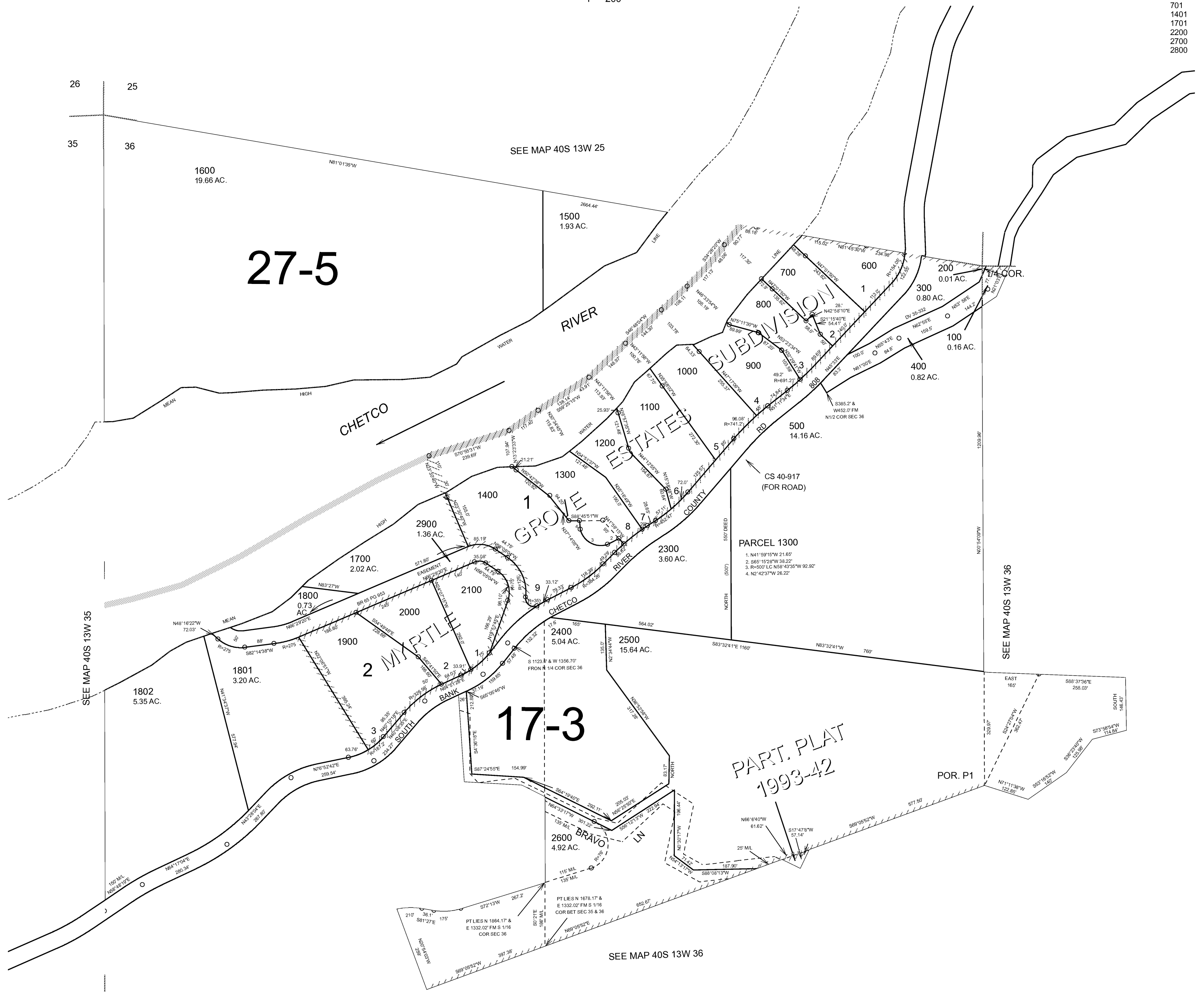
THIS MAP WAS PREPARED FOR ASSESSMENT PURPOSE ONLY



NW1/4 SECTION 36 T.40S. R.13W. W.M.  
CURRY COUNTY  
1" = 200'

40S 13W 36B

CANCELLED NO.  
701  
1401  
1701  
2200  
2700  
2800



26  
35

25  
36

1600  
19.66 AC.

SEE MAP 40S 13W 25

27-5

1500  
1.93 AC.

RIVER

CHETCO

GROWL ESTATES  
SUBDIVISION

CS 40-917  
(FOR ROAD)

PARCEL 1300  
1. N41°59'15"W 21.65'  
2. S65°15'28"W 38.22'  
3. R=500' LC N58°43'35"W 92.92'  
4. N2°42'37"W 26.22'

SEE MAP 40S 13W 36

SEE MAP 40S 13W 35

1802  
5.35 AC.

1801  
3.20 AC.

MARTIN

17-3

PART. PLAT  
1993-42

POR. P1

2600  
4.92 AC.

BRAVO

SEE MAP 40S 13W 36

1/4 COR.

CEN. SEC.

Revised RAA  
3/8/2006

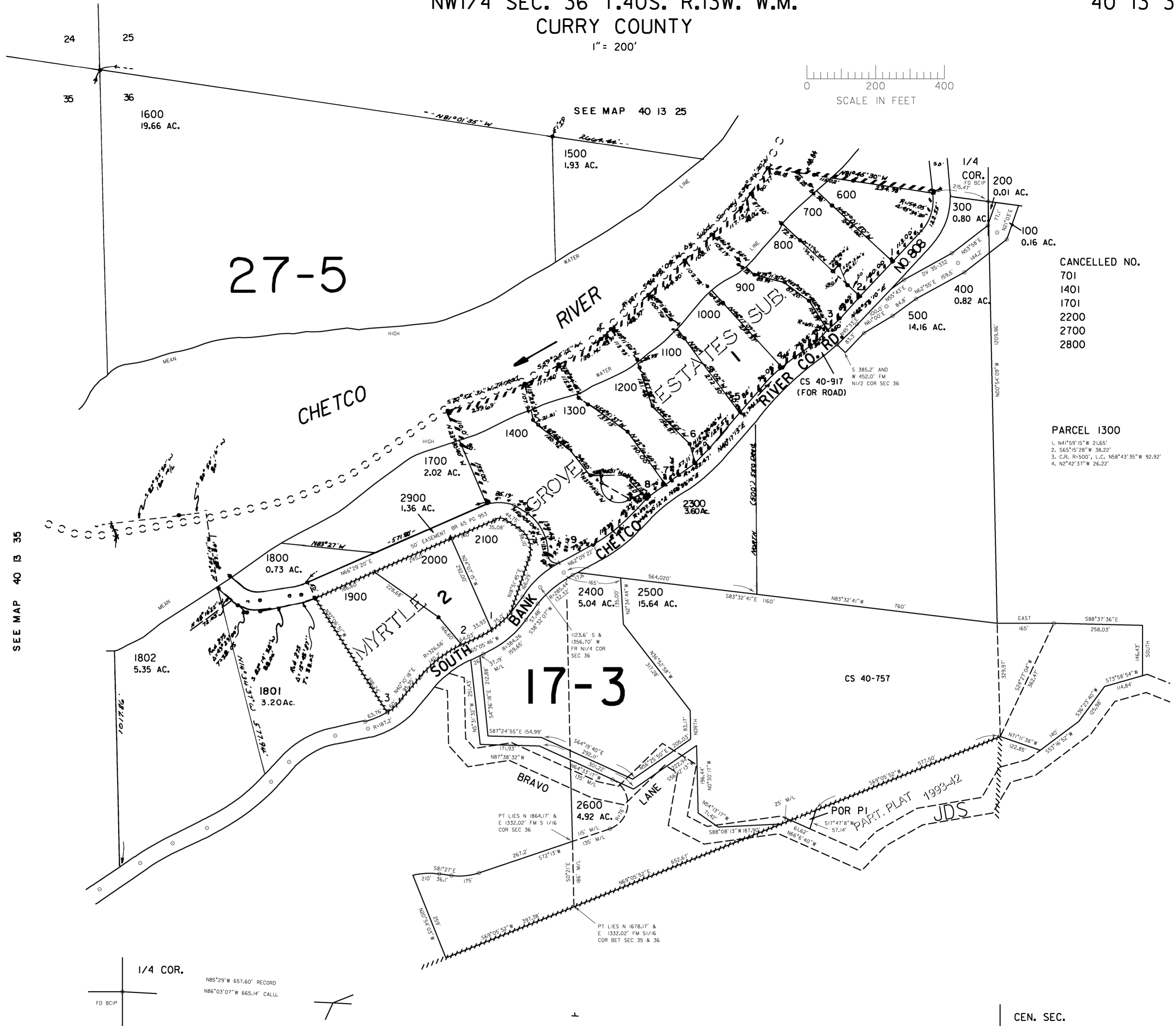
40S 13W 36B

THIS MAP WAS PREPARED FOR ASSESSMENT PURPOSE ONLY

NW1/4 SEC. 36 T.40S. R.13W. W.M.  
CURRY COUNTY

40 13 36B

1" = 200'

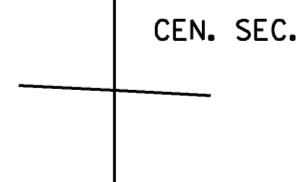
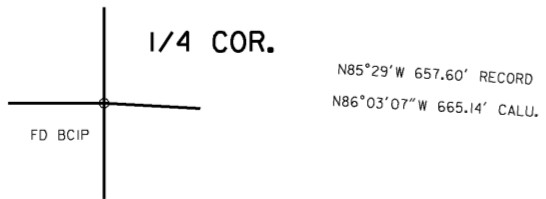


SEE MAP 40 13 35

SEE MAP 40 13 25

CANCELLED NO.  
701  
1401  
1701  
2200  
2700  
2800

PARCEL 1300  
1. N41°59'15"W 21.65'  
2. S65°15'28"W 38.22'  
3. C.R. R4500', L.C. N58°43'35"W 92.92'  
4. N2°42'37"W 26.22'



SEE MAP 40 13 36

Revised  
8/22/2005, DBJ

40 13 36B