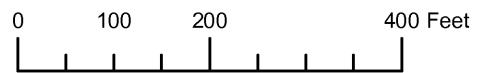


THIS MAP WAS PREPARED FOR ASSESSMENT PURPOSE ONLY

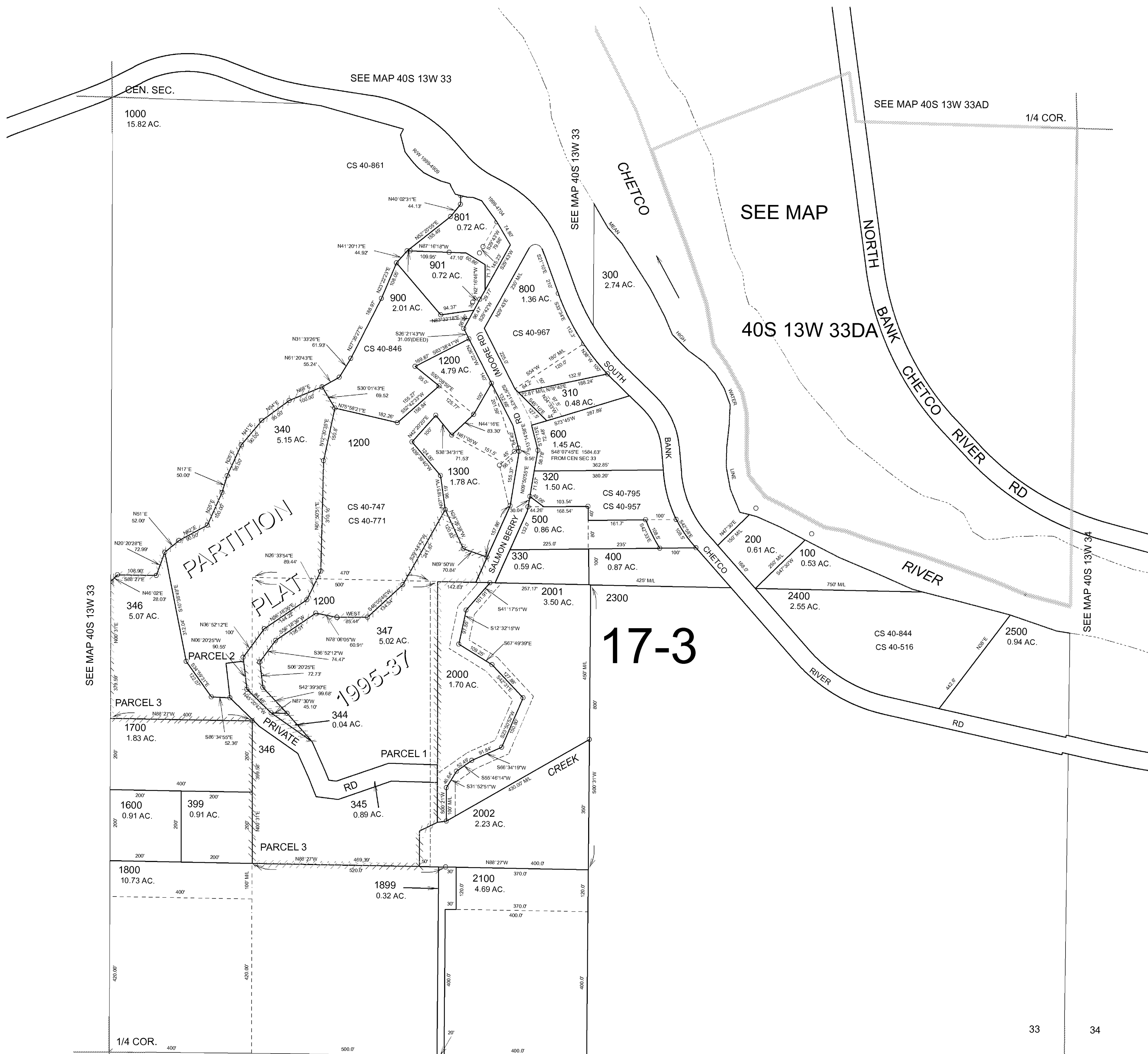
SE1/4 SECTION 33 T.40S. R.13W. W.M. CURRY COUNTY

1" = 200'

40S 13W 33D & INDEX



CANCELLED NO. 341 THRU 343 398 700 802 1100 1400 1500 1801 1900 2200



17-3

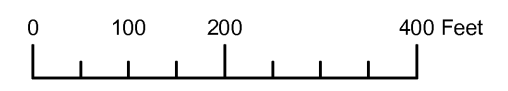
SEE MAP 41S 13W 04

33 34

4 3

Revised RAA 1/29/2007 40S 13W 33D & INDEX

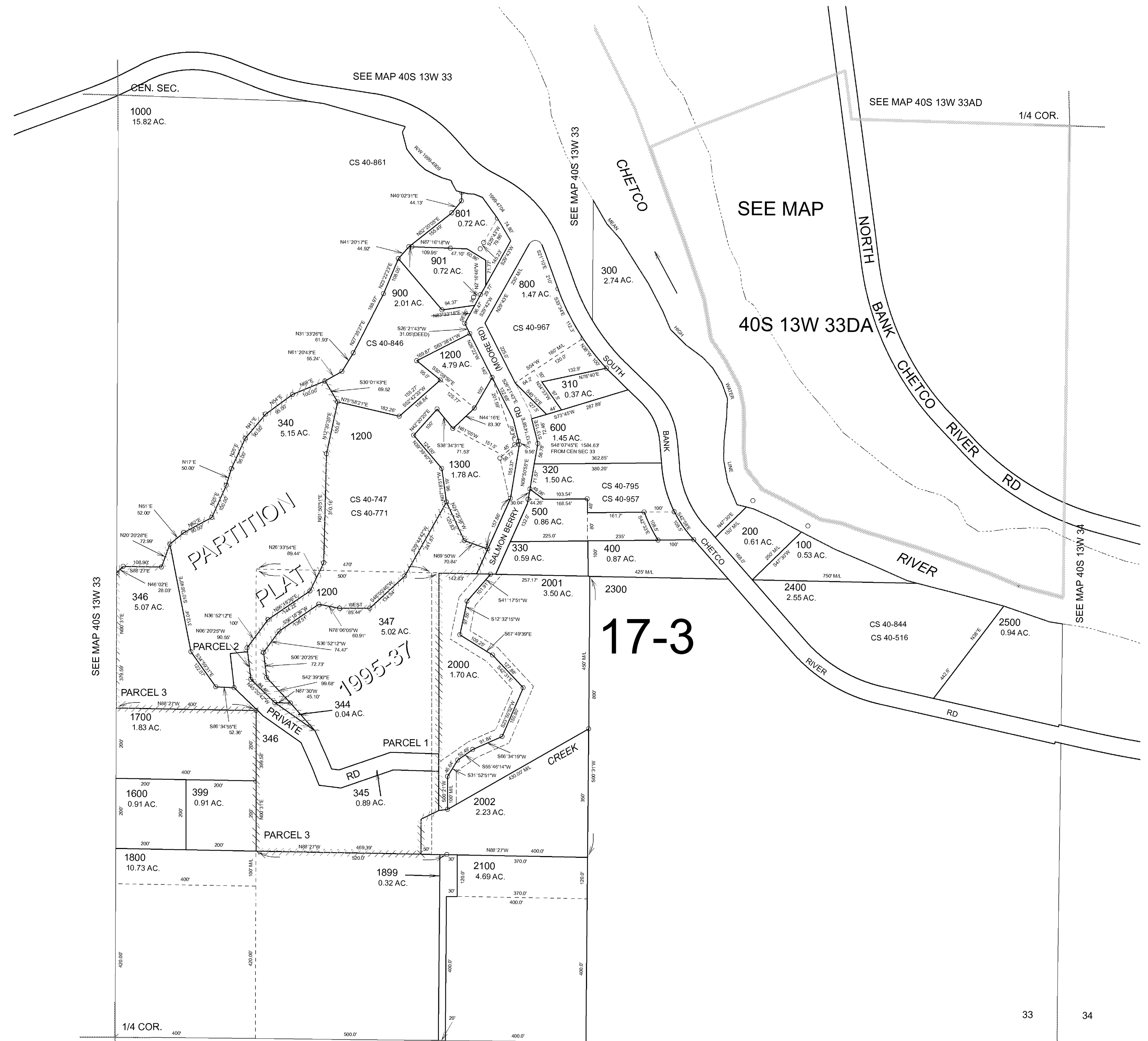
THIS MAP WAS PREPARED FOR
ASSESSMENT PURPOSE ONLY



SE1/4 SECTION 33 T.40S. R.13W. W.M.
CURRY COUNTY
1" = 200'

40S 13W 33D
& INDEX

CANCELLED NO.
341 THRU 343
398
700
802
1100
1400
1500
1801
1802
1900
2200



THIS MAP WAS PREPARED FOR ASSESSMENT PURPOSE ONLY

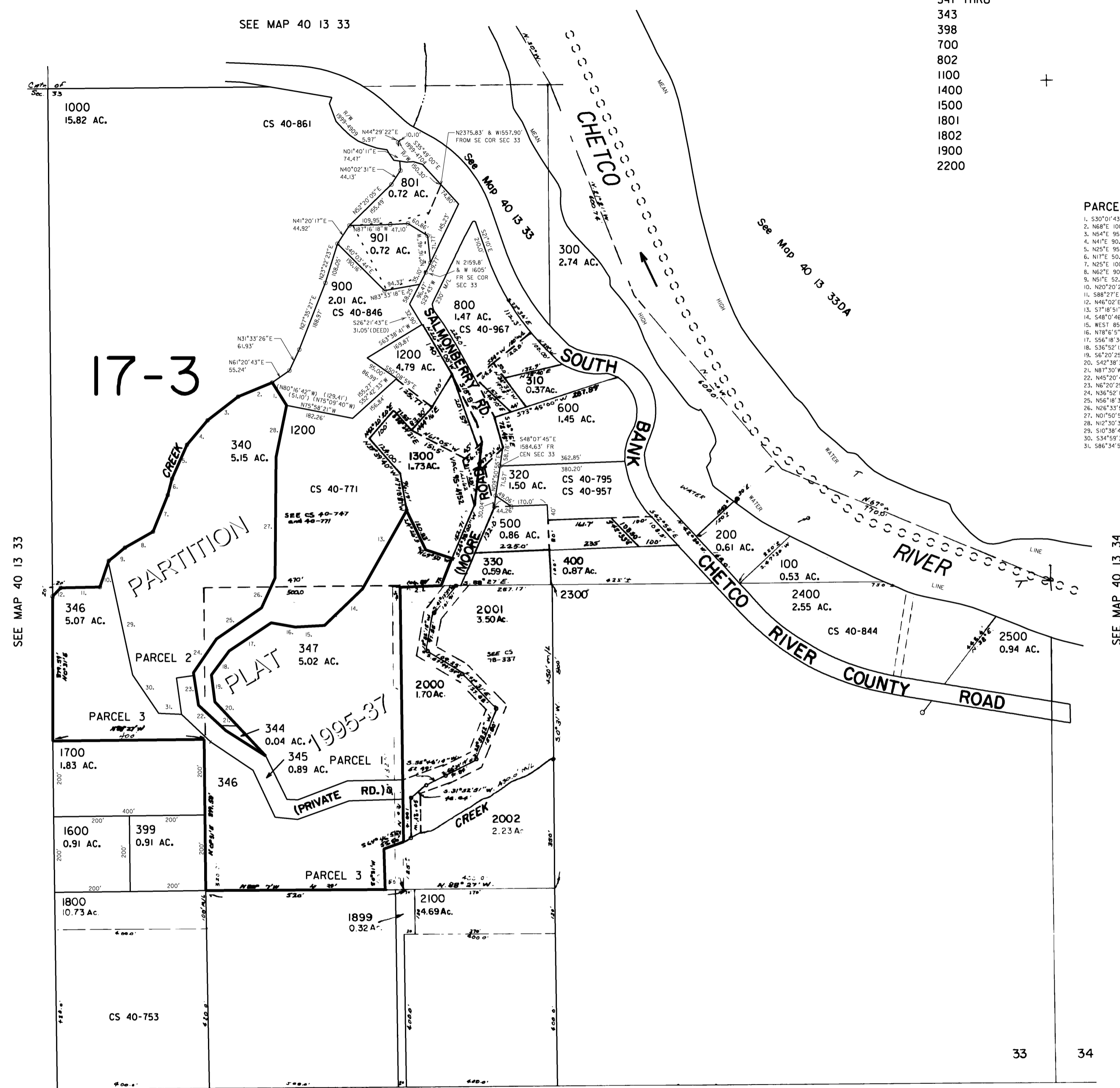
SE1/4 Sec.33 T.40S. R.13W.W.M. CURRY COUNTY 1"=200'

40 13 33 D

CANCELLED NO. 341 THRU 343 398 700 802 1100 1400 1500 1801 1802 1900 2200

PARCELS 340 AND 1200

- 1. S30°01'43"E 69.52'
2. N68°E 100.00'
3. N64°E 95.00'
4. N41°E 80.00'
5. N25°E 95.00'
6. N17°E 50.00'
7. N25°E 100.00'
8. N62°E 90.00'
9. N51°E 52.00'
10. N20°20'28"E 72.99'
11. S88°27'E 108.90'
12. N46°02'E 28.03'
13. S71°05'1"E 96.19'
14. S48°0'46"W 134.54'
15. WEST 85.44'
16. N78°5'5"W 60.91'
17. S56°18'36"W 136.51'
18. S36°52'12"W 74.41'
19. S67°20'25"E 72.13'
20. S42°38'30"E 95.68'
21. N87°30'W 45.10'
22. N45°20'42"W 94.46'
23. N67°20'25"W 90.55'
24. N36°52'12"E 100'
25. S56°18'36"E 144.22'
26. N26°33'54"E 89.44'
27. N07°50'51"E 310.16'
28. N12°30'35"E 150.8'
29. S10°38'49"E 312.04'
30. S34°58'31"E 122.07'
31. S86°34'59"E 52.36'



SEE MAP 40 13 33

SEE MAP 40 13 34

33 34

SEE MAP 41 13

Revised 2/21/2006, DBJ

40 13 33 D

THIS MAP WAS PREPARED FOR ASSESSMENT PURPOSE ONLY

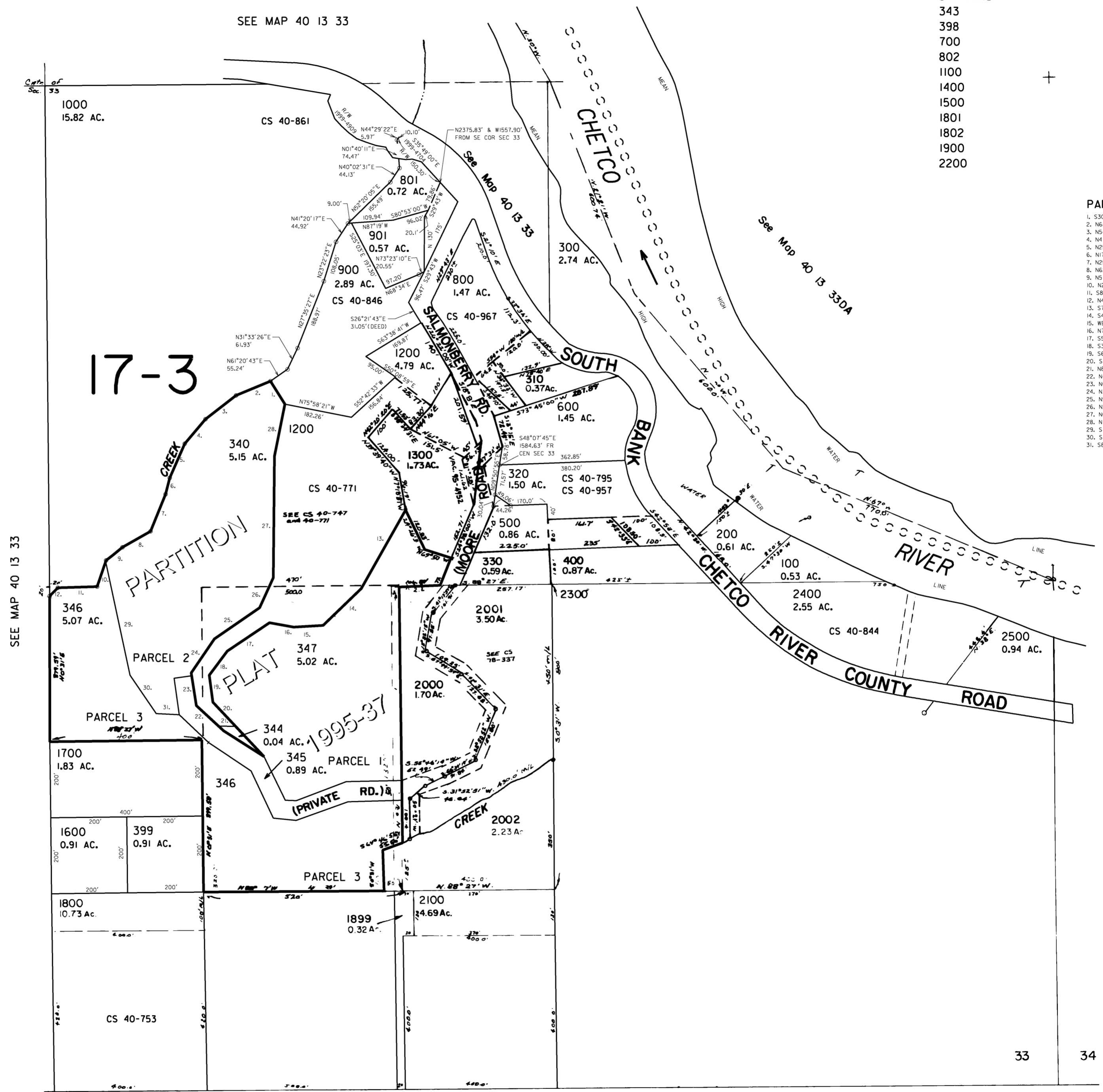
SE1/4 Sec.33 T.40S. R.13W.W.M.
CURRY COUNTY
1" = 200'

40 13 33 D

CANCELLED NO.
341 THRU
343
398
700
802
1100
1400
1500
1801
1802
1900
2200

PARCELS 340 AND 1200

1. S30°10'43"E 69.52'
2. N68°E 100.00'
3. N54°E 95.00'
4. N41°E 90.00'
5. N25°E 85.00'
6. N17°E 50.00'
7. N25°E 100.00'
8. N62°E 90.00'
9. N51°E 52.00'
10. N20°20'28"E 72.99'
11. S88°27'E 108.90'
12. N46°02'E 28.03'
13. S17°18'51"E 96.19'
14. S48°0'46"W 134.54'
15. WEST 85.44'
16. N78°6'5"W 60.91'
17. S56°18'36"W 136.51'
18. S36°52'12"W 74.41'
19. S6°00'25"E 12.71'
20. S42°38'30"E 99.68'
21. N87°30'W 45.10'
22. N45°20'42"W 94.46'
23. N6°20'25"W 90.55'
24. N36°52'12"E 100'
25. N56°18'36"E 144.22'
26. N26°33'54"E 89.44'
27. N01°50'51"E 310.16'
28. N12°30'35"E 150.8'
29. S10°38'49"E 312.04'
30. S34°59'31"E 122.07'
31. S86°34'55"E 52.36'



SEE MAP 40 13 33

SEE MAP 40 13 34

33 34

Revised
6/28/2005, DBJ

4 3

SEE MAP 41 13

40 13 33 D