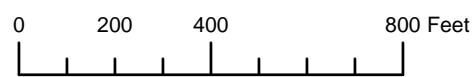


THIS MAP WAS PREPARED FOR ASSESSMENT PURPOSE ONLY

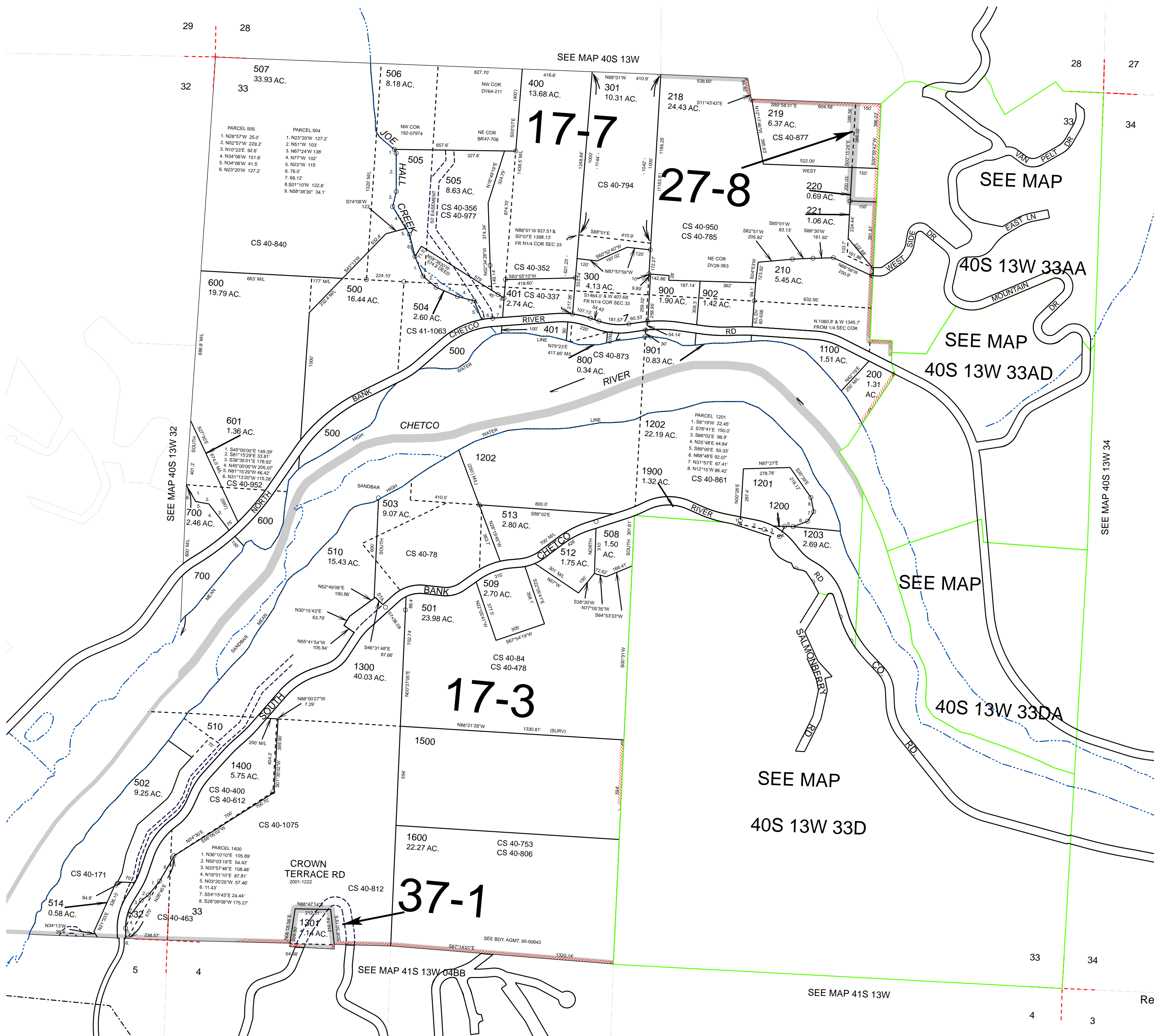


SECTION 33 T.40S. R.13W. W.M. CURRY COUNTY

1" = 400'

40S13W33

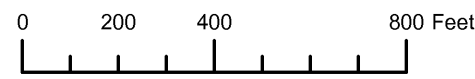
CANCELLED:  
100 THRU 104  
201 THRU 209  
211 THRU 215  
217  
222  
402  
511  
801  
802  
1000  
1204  
1401  
1700 THRU 1805



Revised: RAA  
01/20/2010

40S13W33

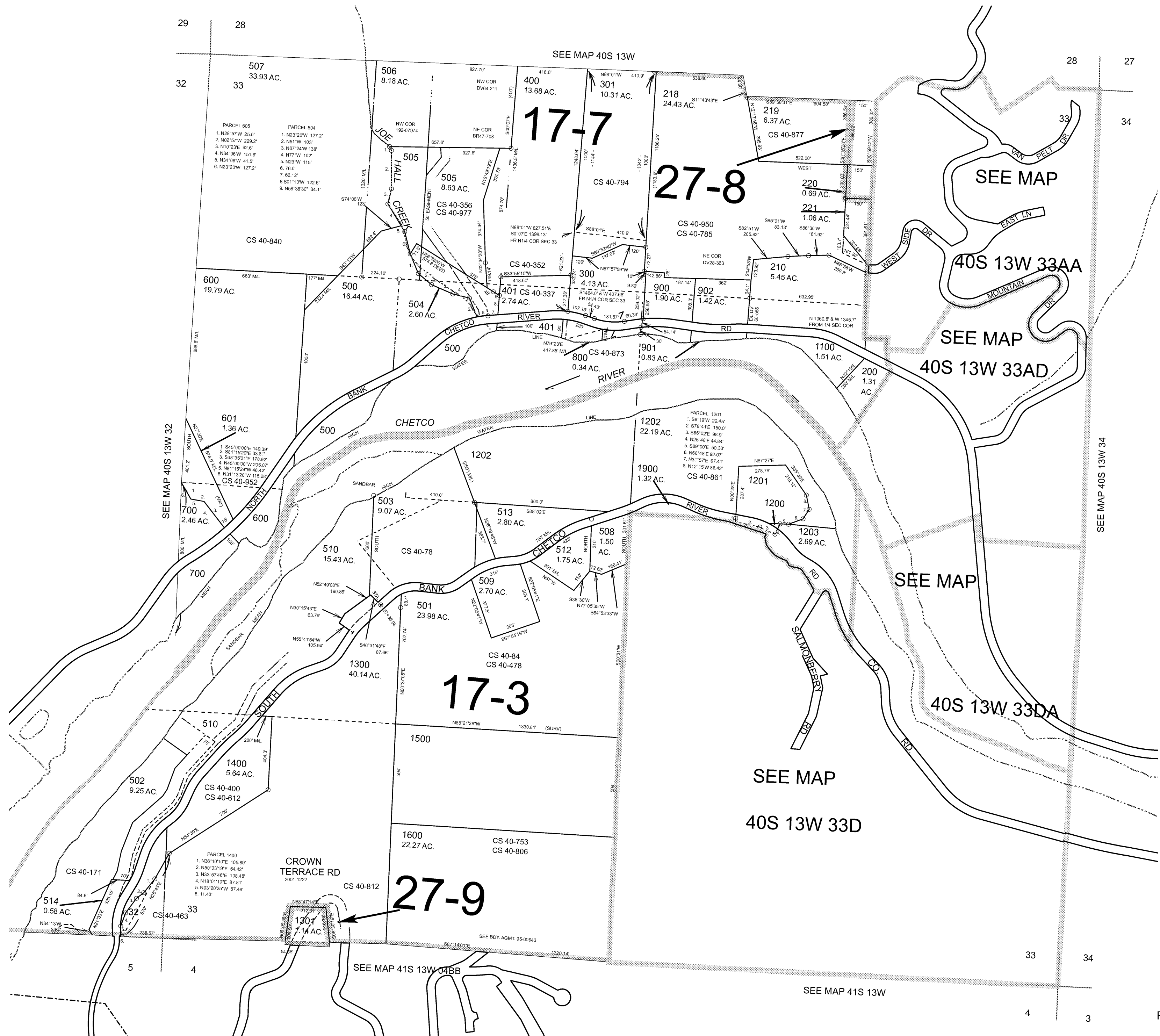
THIS MAP WAS PREPARED FOR ASSESSMENT PURPOSE ONLY



SECTION 33 T.40S. R.13W. W.M. CURRY COUNTY 1" = 400'

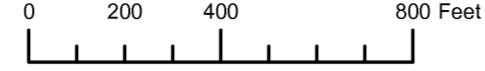
40S13W33

CANCELLED: 100 THRU 104 201 THRU 209 211 THRU 215 217 222 402 511 801 802 1000 1204 1401 1700 THRU 1805



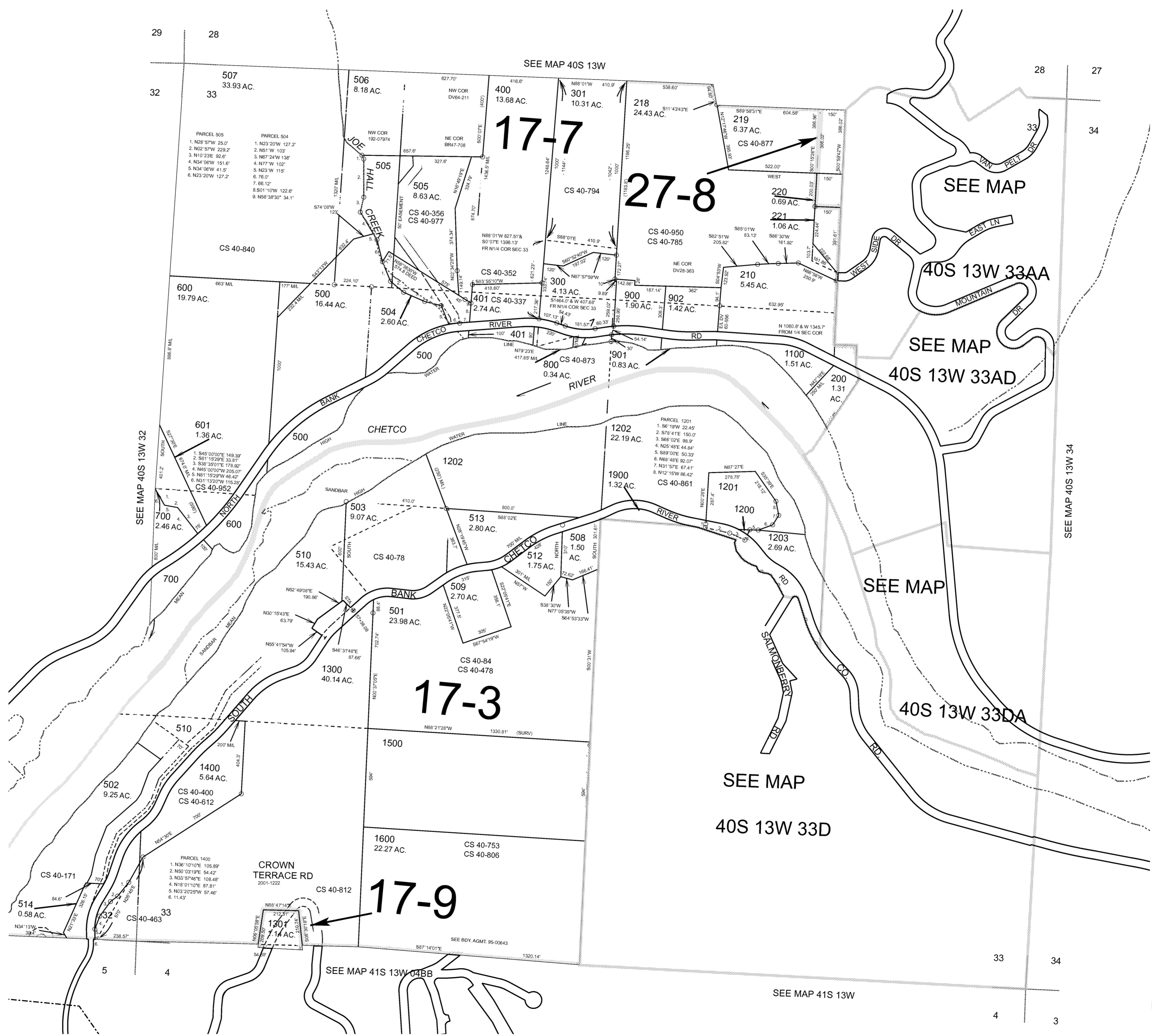
4 3

THIS MAP WAS PREPARED FOR ASSESSMENT PURPOSE ONLY



SECTION 33 T.40S. R.13W. W.M. CURRY COUNTY 1" = 400'

- CANCELLED:
- 100 THRU 104
- 201 THRU 209
- 211 THRU 215
- 217
- 222
- 402
- 511
- 801
- 802
- 1000
- 1204
- 1401
- 1700 THRU 1805

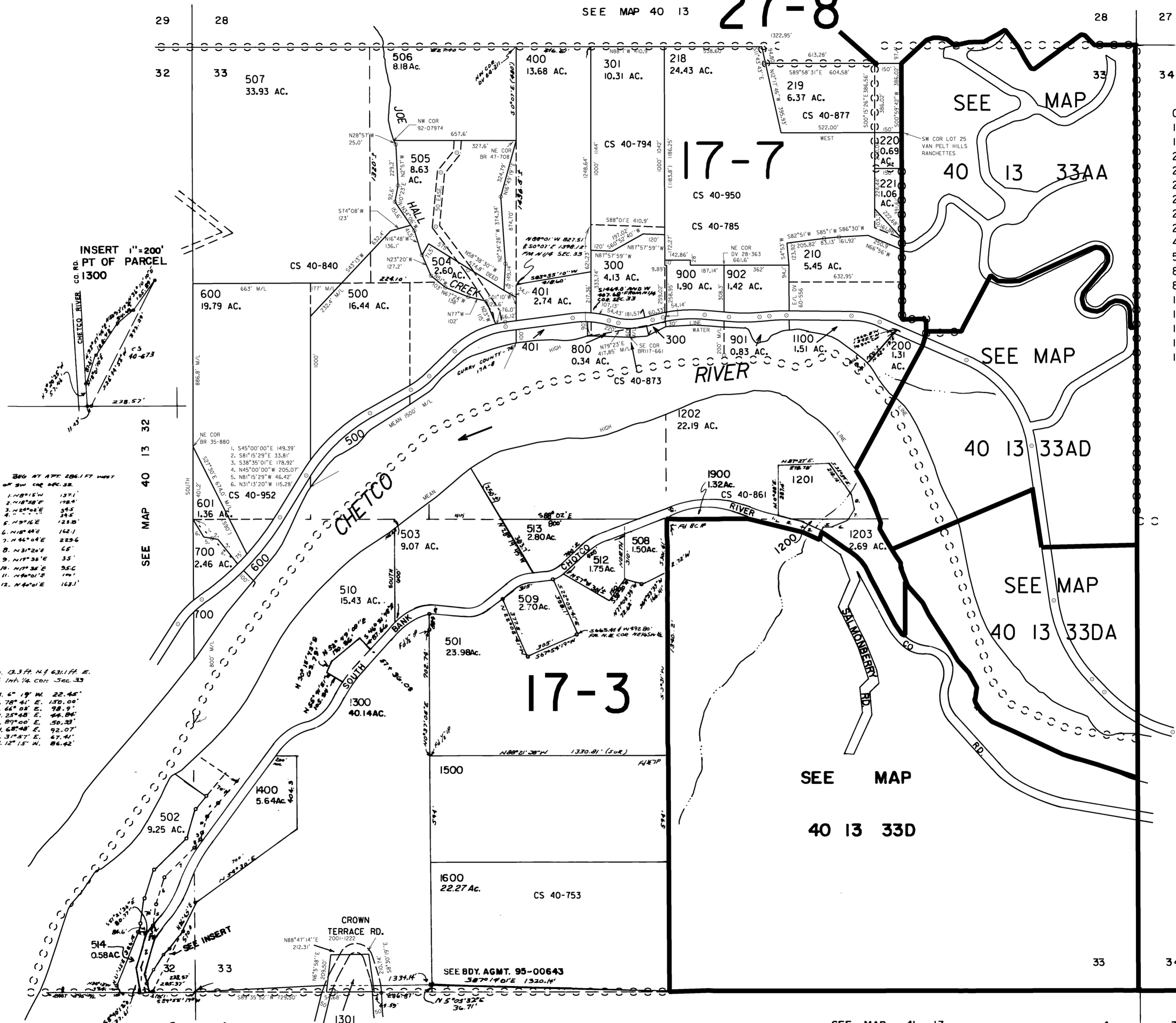


THIS MAP WAS PREPARED FOR ASSESSMENT PURPOSE ONLY

SECTION 33 T.40S R.13W. W.M. CURRY COUNTY



1" = 400'



INSERT 1"=200' PT OF PARCEL 1300

- 280 AT APT 206.1 FT WEST OF SW COR SEC. 33
- 1. N81°15'W 137.1'
- 2. N18°28'E 178.4'
- 3. N20°4'E 34.5'
- 4. N5°16'E 24.5'
- 5. N5°16'E 23.0'
- 6. N18°44'E 142.1'
- 7. N46°04'E 223.6'
- 8. N31°24'E 45'
- 9. N17°36'E 35'
- 10. N17°36'E 35.0'
- 11. N80°15'W 190'
- 12. N40°1'E 163.1'

- 89. 13.3 FT. N. § 63.1 FT. E. OF INT. 1/4 COR. SEC. 33
- 1. S. 6° 18' W. 22.45'
- 2. S. 78° 41' E. 150.00'
- 3. S. 66° 08' E. 78.9'
- 4. N. 25° 48' E. 44.84'
- 5. S. 81° 00' E. 50.33'
- 6. N. 68° 48' E. 92.07'
- 7. N. 31° 57' E. 47.41'
- 8. N. 12° 15' W. 86.42'

27-8

17-7

17-3

CANCELLED NO. 100 THRU 104 201 THRU 209 211 THRU 215 217 222 402 511 801 802 1000 1204 1401 1700 THRU 1805

SEE MAP 40 13 34

Revised 11/25/2005, DBJ

THIS MAP WAS PREPARED FOR  
ASSESSMENT PURPOSE ONLY

SECTION 33 T.40S R.13W. W.M.  
CURRY COUNTY

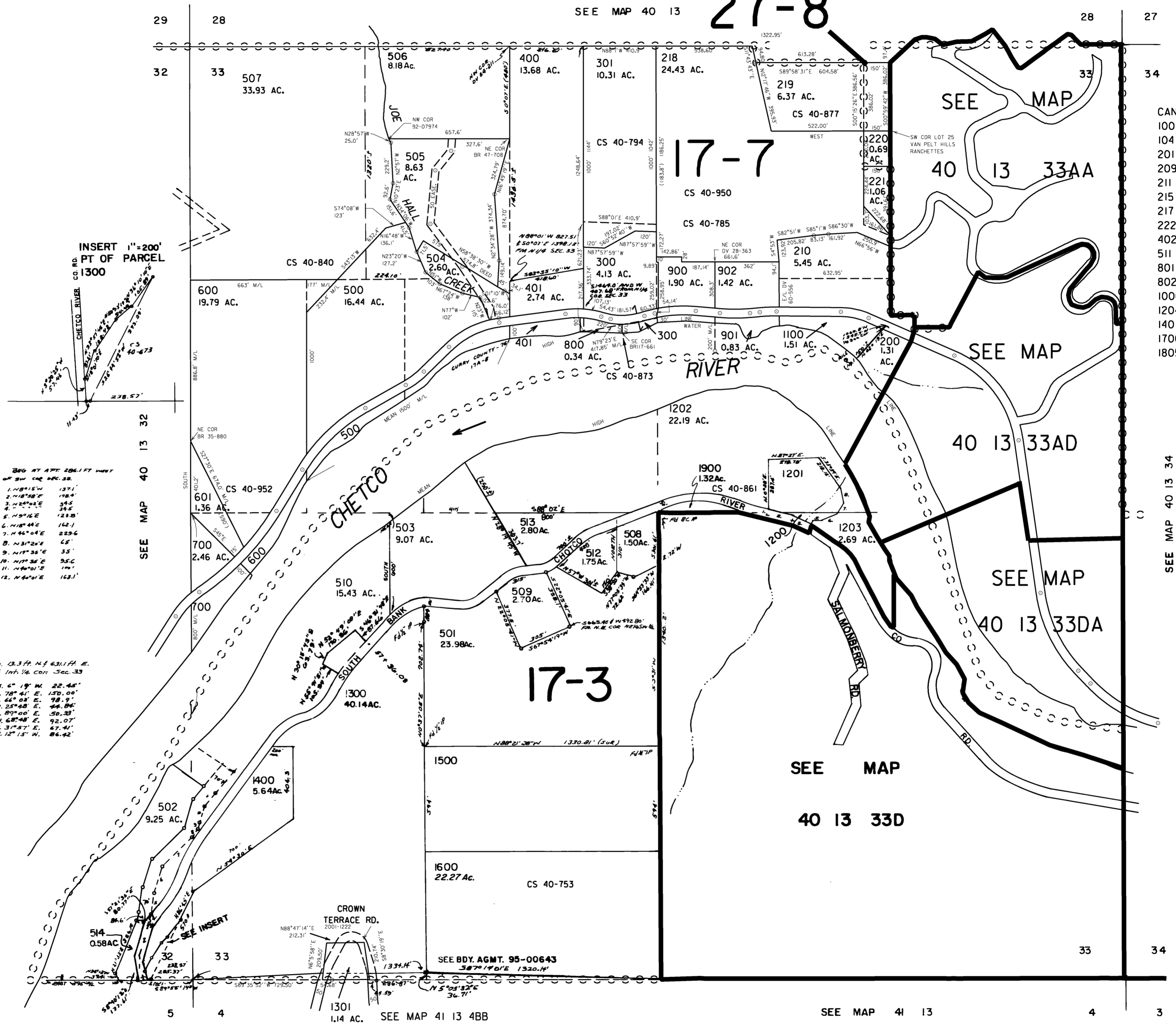
40 13 33  
& INDEX



1" = 400'

SEE MAP 40 13

27-8



INSERT 1"=200'  
PT OF PARCEL  
1300

- 280 AT THE 206.1 FT POINT  
OF SW COR SEC. 33
1. N89°15'W 137.1'
  2. N18°28'E 178.4'
  3. N20°4'E 34.5'
  4. N19°16'E 123.0'
  5. N19°16'E 123.0'
  6. N18°44'E 142.1'
  7. N46°04'E 223.6'
  8. N31°24'E 45'
  9. N17°36'E 35'
  10. N17°36'E 35.0'
  11. N89°15'W 137.1'
  12. N46°04'E 163.1'

89. 13.3 FT. N. § 63.1 FT. E.  
OF INT. 1/4 COR. SEC. 33
1. S. 6° 19' W. 22.45'
  2. S. 78° 41' E. 150.00'
  3. S. 66° 08' E. 78.9'
  4. N. 25° 48' E. 44.84'
  5. S. 89° 00' E. 50.33'
  6. N. 68° 40' E. 92.07'
  7. N. 31° 57' E. 67.41'
  8. N. 12° 15' W. 86.42'

CANCELLED NO.  
100 THRU  
104  
201 THRU  
209  
211 THRU  
215  
217  
222  
402  
511  
801  
802  
1000  
1204  
1401  
1700 THRU  
1805

SEE MAP 40 13 34

Revised  
9/1/2005, 9C

40 13 33  
& INDEX