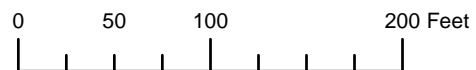


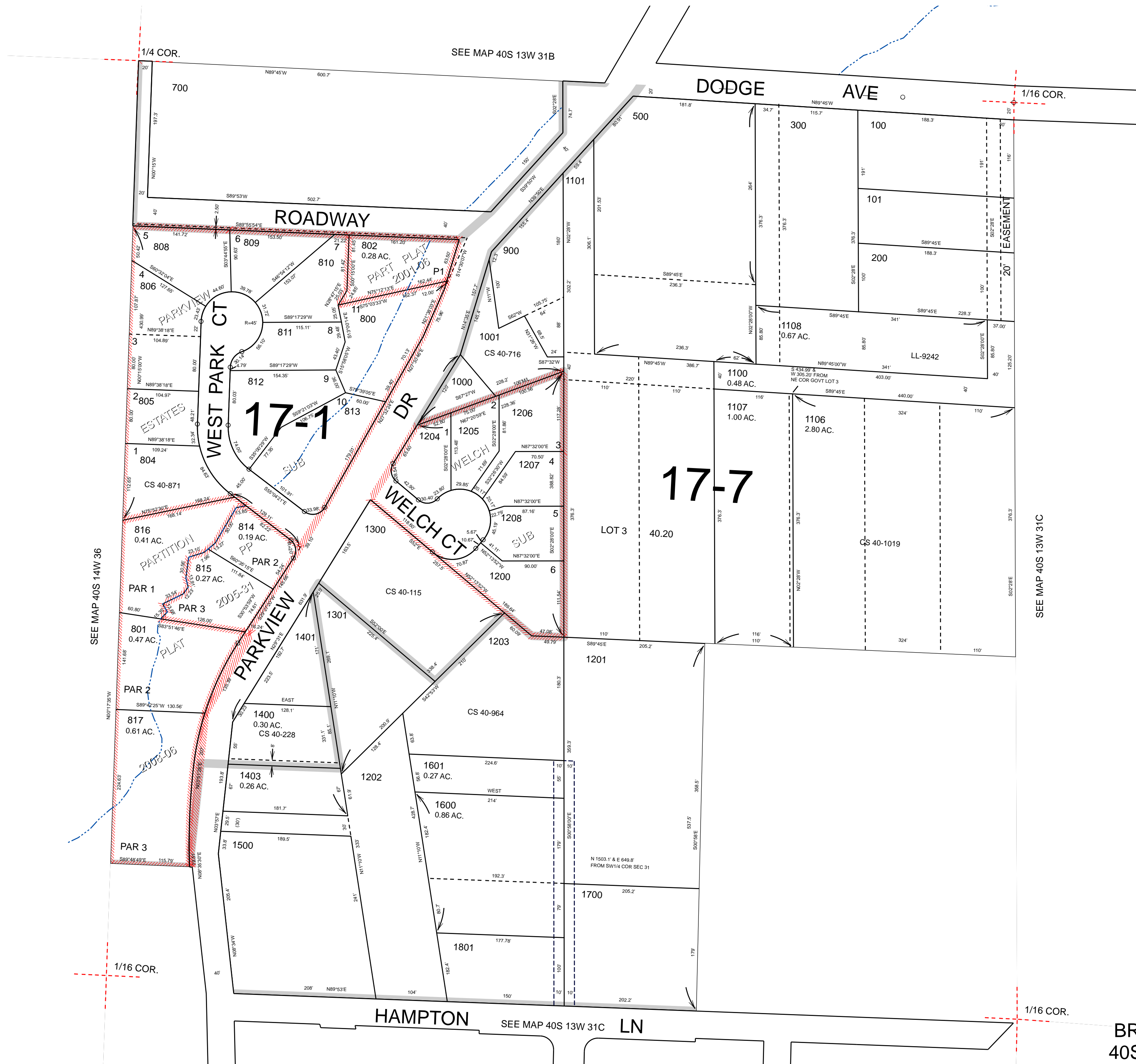
THIS MAP WAS PREPARED FOR ASSESSMENT PURPOSE ONLY



N.W.1/4 S.W.1/4 SEC.31 T.40S. R.13W. W.M.  
CURRY COUNTY  
1" = 100'

40S13W31CB  
BROOKINGS

- CANCELLED:
- 102
  - 301
  - 400
  - 401
  - 600
  - 803
  - 807
  - 1102 THRU 1105
  - 1402
  - 1800



SEE MAP 40S 14W 36

SEE MAP 40S 13W 31B

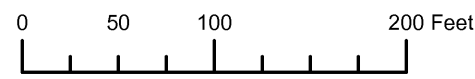
SEE MAP 40S 13W 31C

SEE MAP 40S 13W 31C

Revised: RAA  
7/20/2011

BROOKINGS  
40S13W31CB

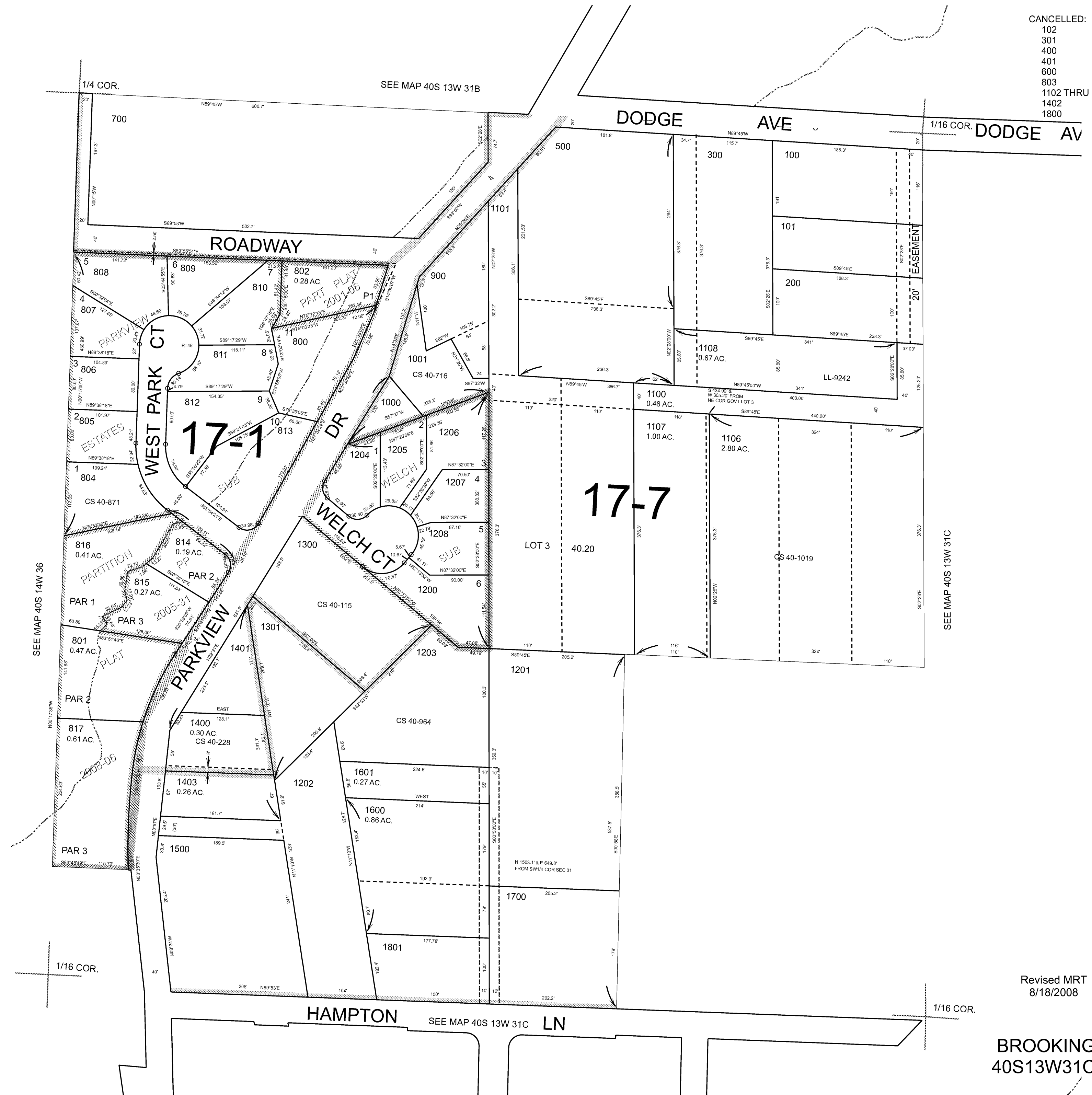
THIS MAP WAS PREPARED FOR ASSESSMENT PURPOSE ONLY



N.W.1/4 S.W.1/4 SEC.31 T.40S. R.13W. W.M.  
CURRY COUNTY  
1" = 100'

40S13W31CB  
BROOKINGS

- CANCELLED:
- 102
  - 301
  - 400
  - 401
  - 600
  - 803
  - 1102 THRU 1105
  - 1402
  - 1800



Revised MRT  
8/18/2008

BROOKINGS  
40S13W31CB

THIS MAP WAS PREPARED FOR  
ASSESSMENT PURPOSE ONLY

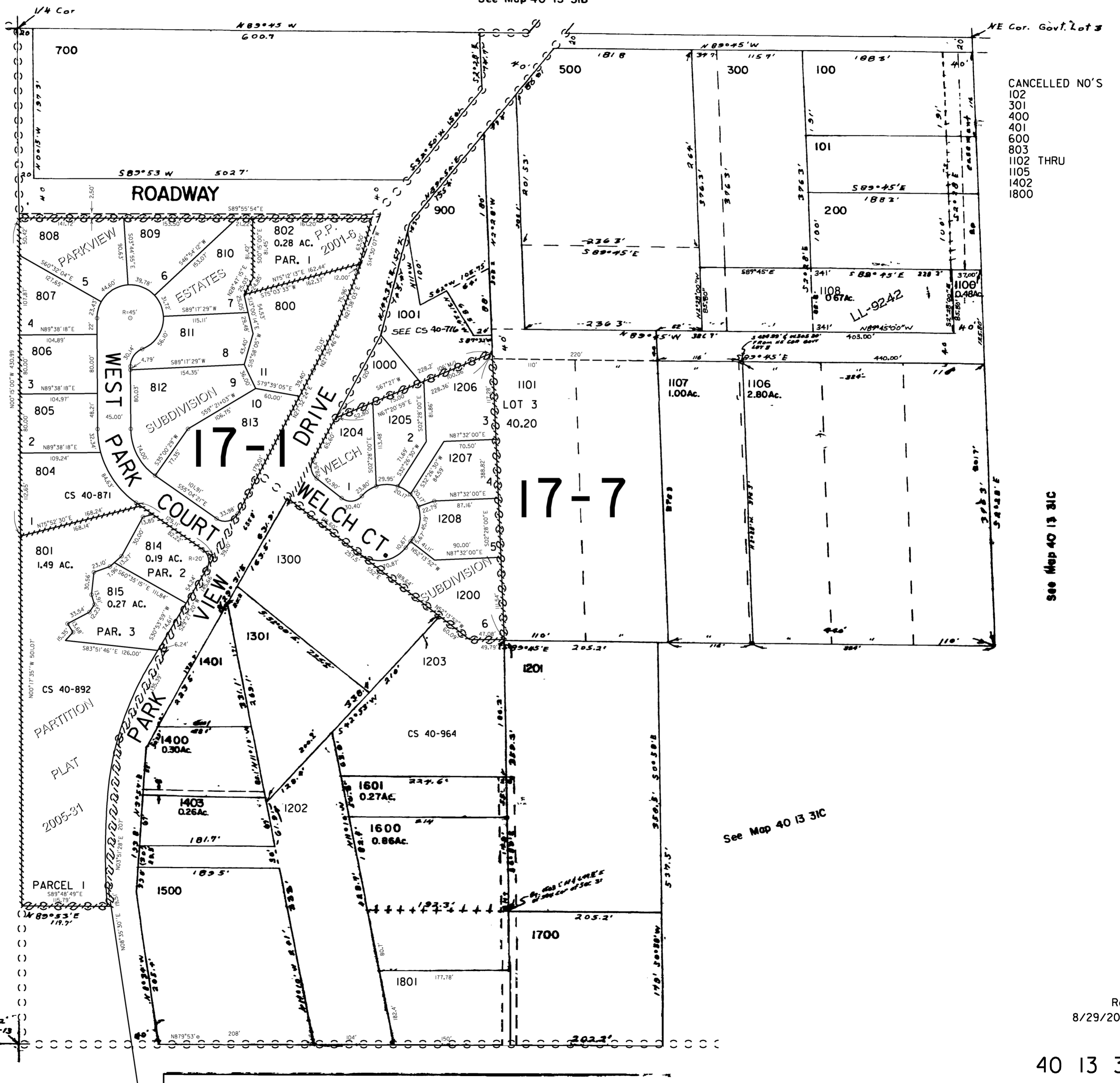
NW1/4 SW1/4 SEC.31 T40S. R13W.W.M.  
CURRY COUNTY

40 13 31CB

1" = 100'



See Map 40 13 31B



CANCELLED NO'S  
102  
301  
400  
401  
600  
803  
1102 THRU  
1105  
1402  
1800

See Map 40 14 36

See Map 40 13 31C

See Map 40 13 31C

Revised  
8/29/2005, 9C

40 13 31CB