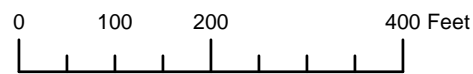


THIS MAP WAS PREPARED FOR ASSESSMENT PURPOSE ONLY

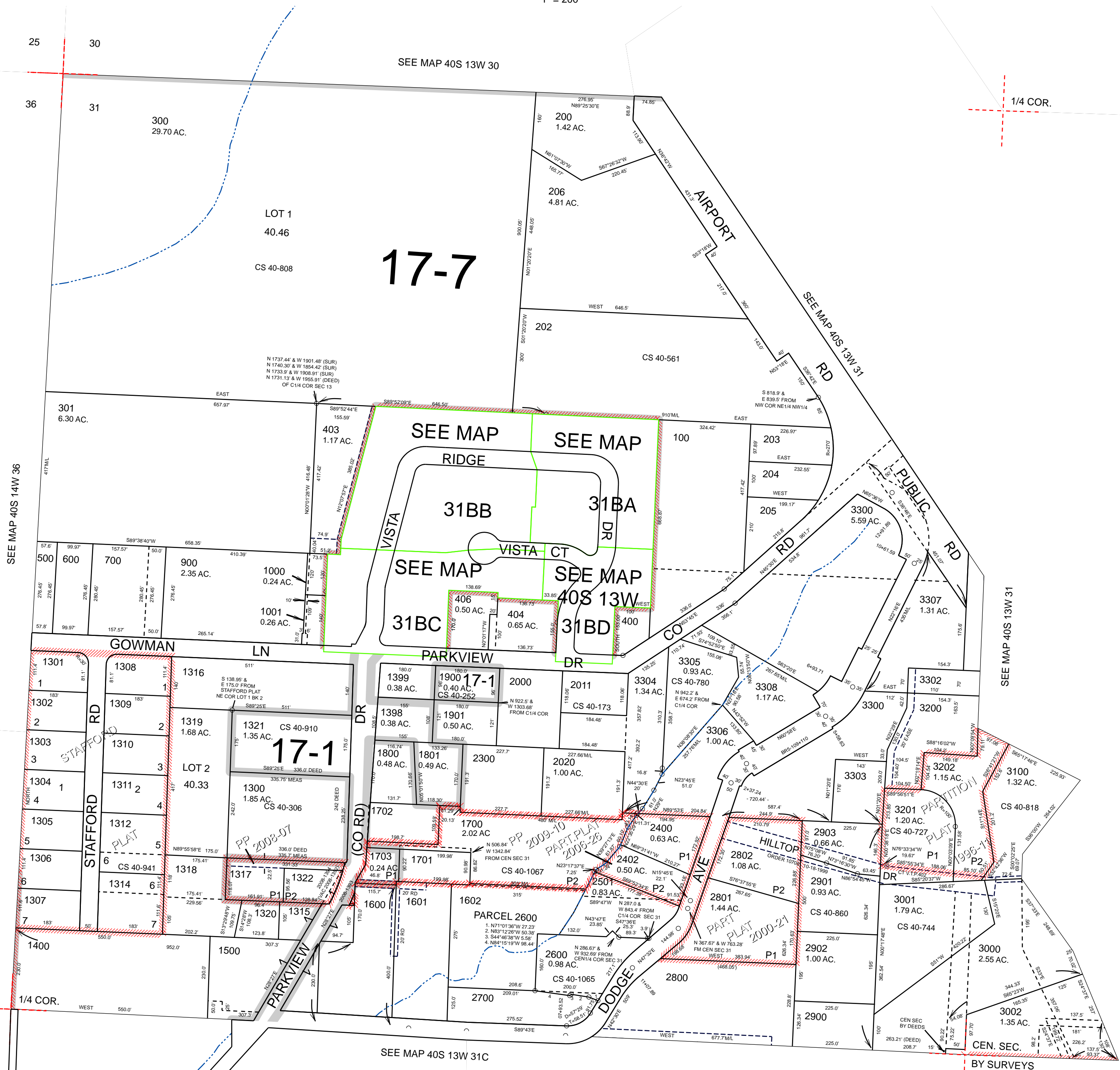


N.W. 1/4 SEC. 31 T. 40S. R. 13W. W.M. CURRY COUNTY

1" = 200'

40S13W31B BROOKINGS

- CANCELLED:
- 201
- 402
- 405
- 407
- 408
- 800
- 901
- 902
- 1002
- 1099
- 1100
- 1101
- 1200
- 1313
- 1603
- 2010
- 2100
- 2200
- 2401
- 2500
- 2502
- 3003 THRU 3007
- 3301



SEE MAP 40S 13W 31

SEE MAP 40S 14W 36

SEE MAP 40S 13W 30

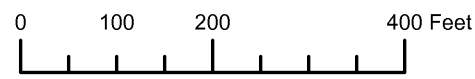
SEE MAP 40S 13W 31

SEE MAP 40S 13W 31C

Revised: RAA 11/30/2009

BROOKINGS 40S13W31B

THIS MAP WAS PREPARED FOR ASSESSMENT PURPOSE ONLY

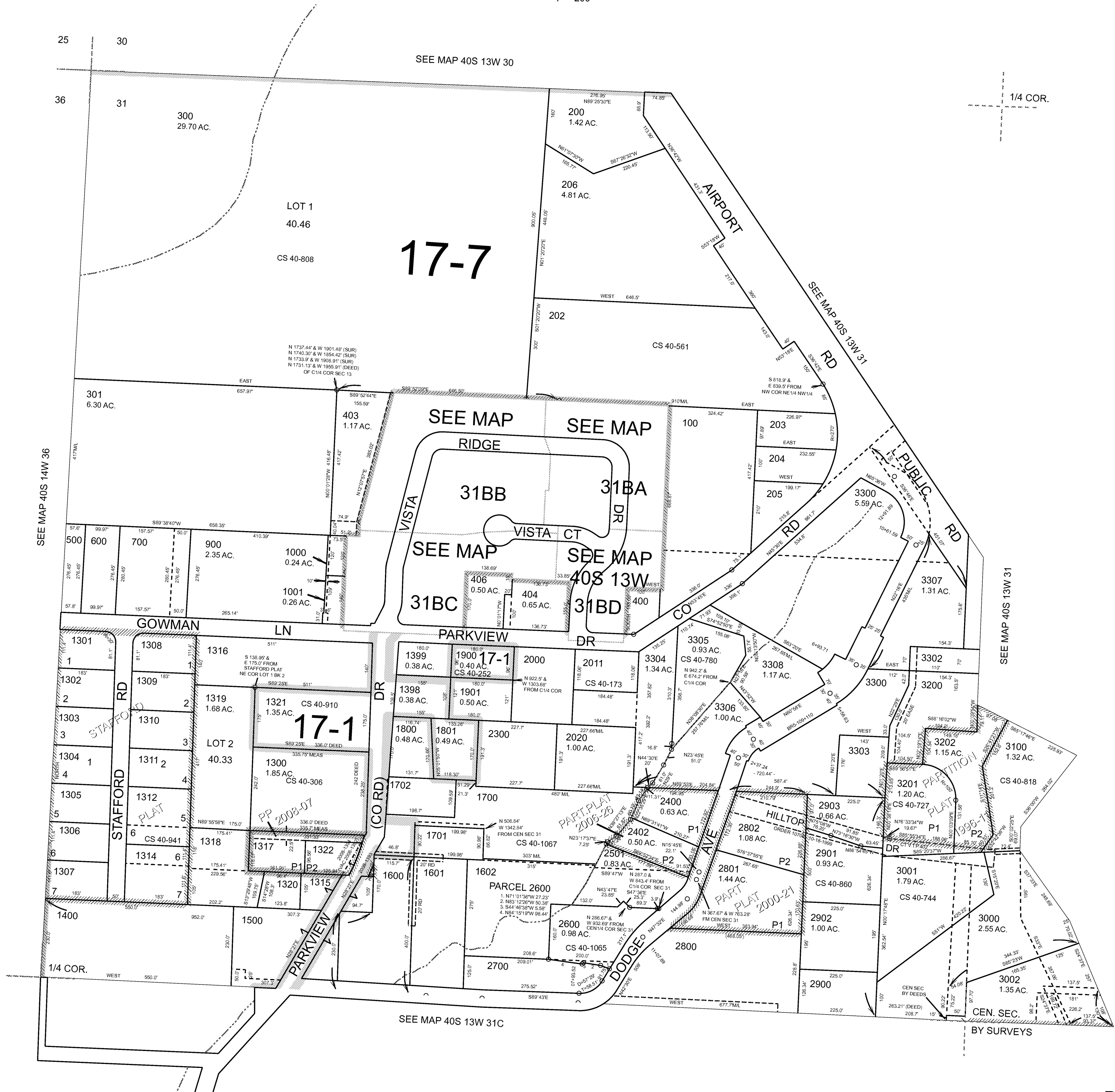


N.W. 1/4 SEC. 31 T. 40S. R. 13W. W.M. CURRY COUNTY

1" = 200'

40S13W31B BROOKINGS

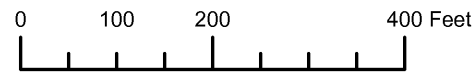
- CANCELLED:
- 201
 - 402
 - 405
 - 407
 - 408
 - 800
 - 901
 - 902
 - 1002
 - 1099
 - 1100
 - 1101
 - 1200
 - 1313
 - 1603
 - 2010
 - 2100
 - 2200
 - 2401
 - 2500
 - 2502
 - 3003 THRU 3007
 - 3301



Revised: RAA 6/22/2009

BROOKINGS 40S13W31B

THIS MAP WAS PREPARED FOR ASSESSMENT PURPOSE ONLY

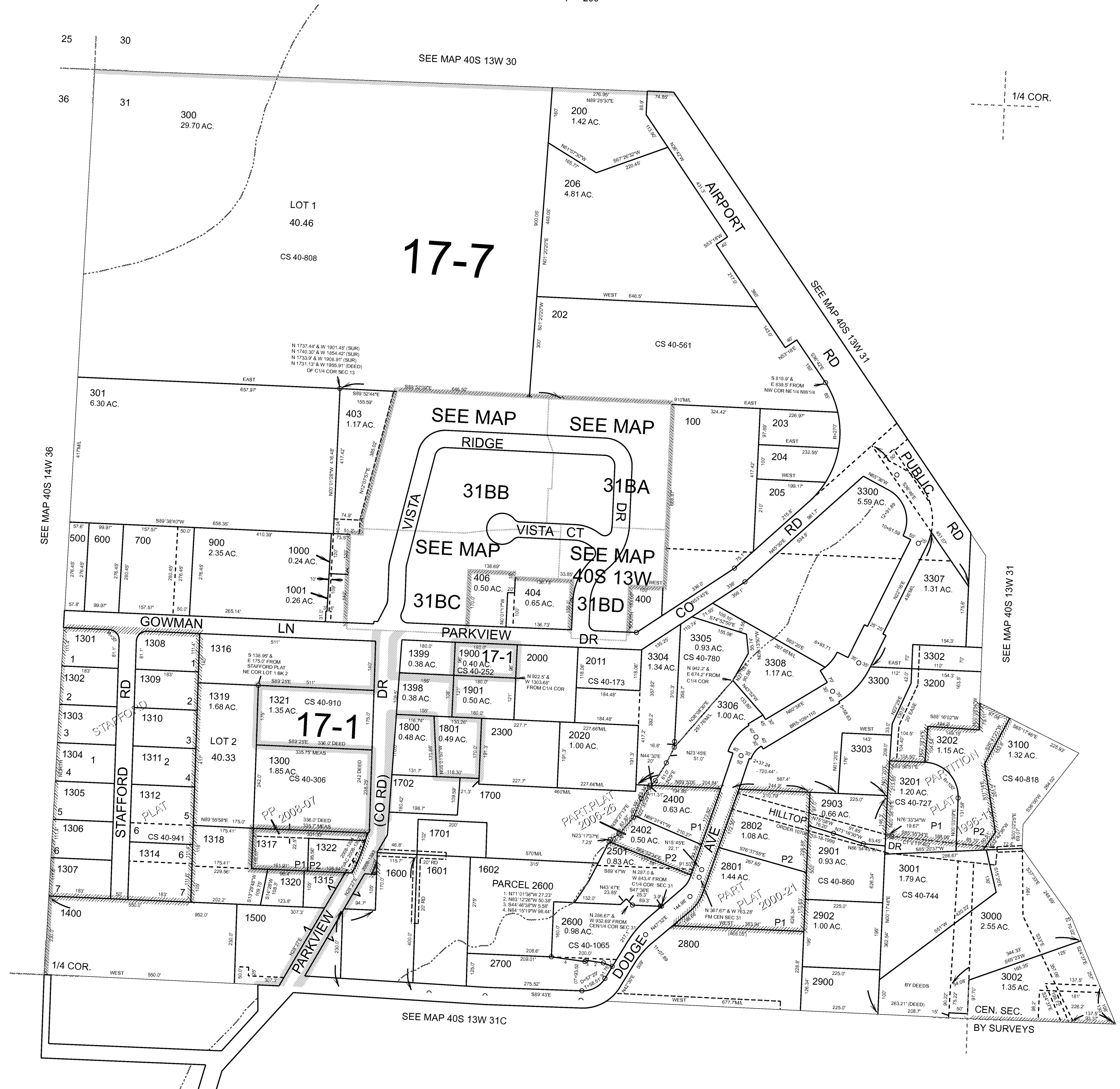


N.W. 1/4 SEC.31 T.40S. R.13W. W.M. CURRY COUNTY

1" = 200'

40S13W31B BROOKINGS

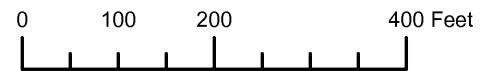
- CANCELLED:
- 1099
 - 1101
 - 1200
 - 1313
 - 1603
 - 2010
 - 2100
 - 2200
 - 2401
 - 2500
 - 2502
 - 3003 THRU 3007
 - 3301
 - 201
 - 402
 - 405
 - 407
 - 408
 - 800
 - 901
 - 902
 - 1002
 - 1100



Revised: RAA 4/23/2009

BROOKINGS 40S13W31B

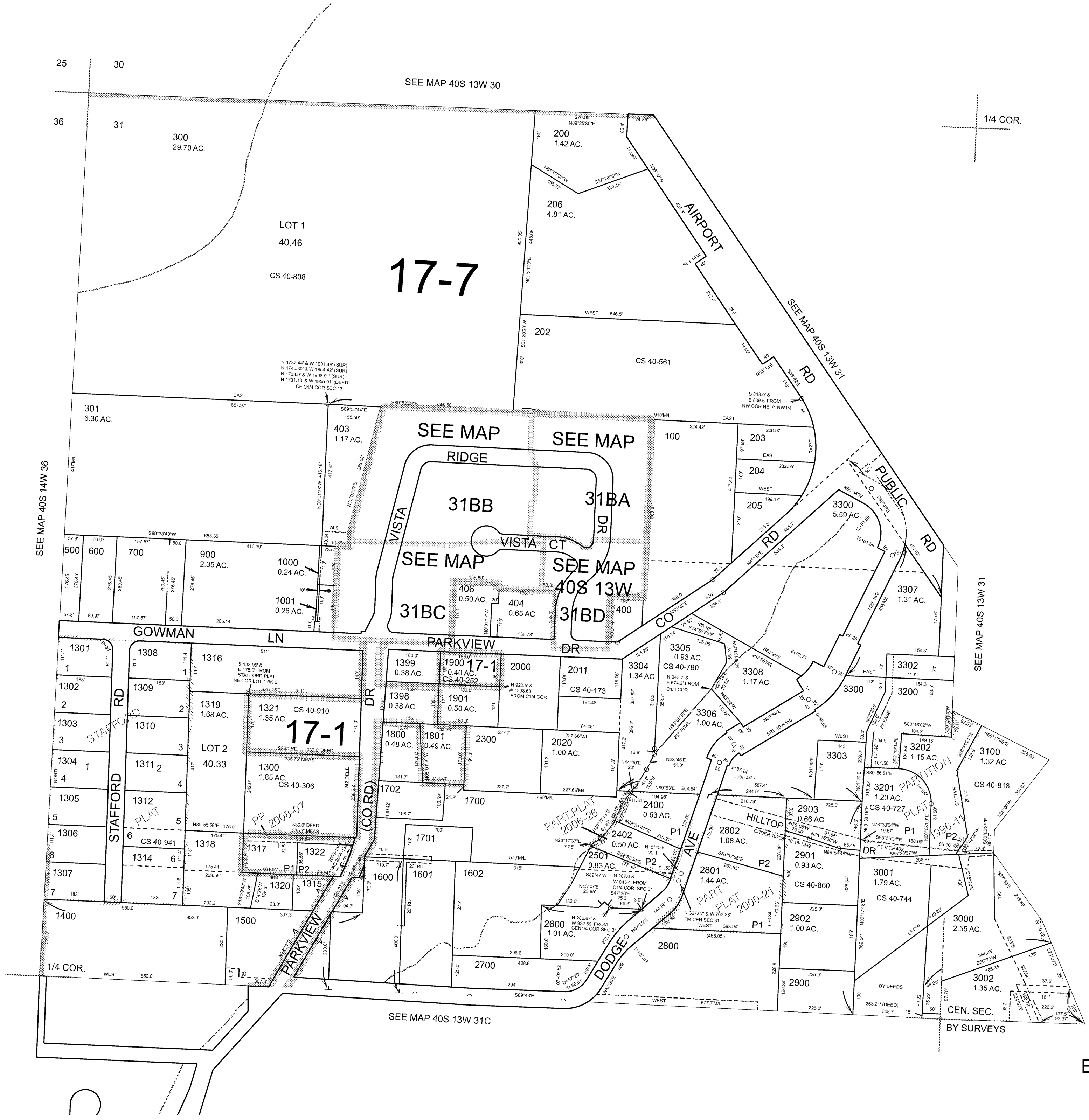
THIS MAP WAS PREPARED FOR ASSESSMENT PURPOSE ONLY



N.W.1/4 SEC.31 T.40S. R.13W. W.M. CURRY COUNTY 1" = 200'

40S13W31B BROOKINGS

- CANCELLED:
- 201
 - 402
 - 405
 - 407
 - 408
 - 800
 - 901
 - 902
 - 1002
 - 1099
 - 1100
 - 1101
 - 1200
 - 1313
 - 1603
 - 2010
 - 2100
 - 2200
 - 2401
 - 2500
 - 2502
 - 3003 THRU 3007
 - 3301



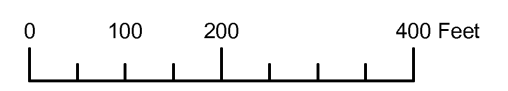
Revised 9C 8/14/2008

BROOKINGS 40S13W31B

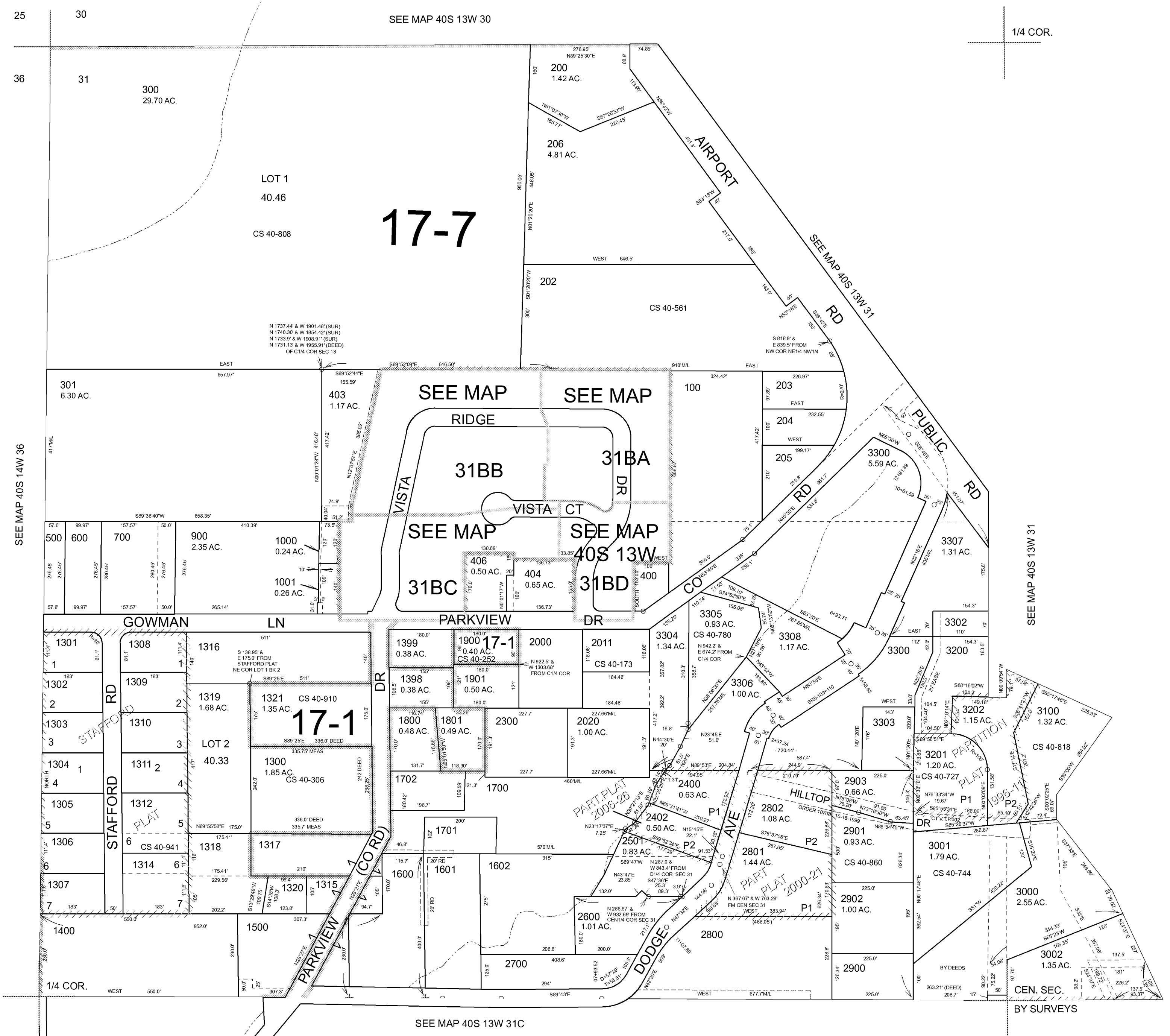
THIS MAP WAS PREPARED FOR ASSESSMENT PURPOSE ONLY

NW1/4 SECTION 31 T.40S. R.13W. W.M. CURRY COUNTY
1" = 200'

40S 13W 31B & INDEX



- CANCELLED NO.
- 201
- 402
- 405
- 407
- 408
- 800
- 901
- 902
- 1002
- 1099
- 1100
- 1101
- 1200
- 1313
- 1603
- 2010
- 2100
- 2200
- 2401
- 2500
- 2502
- 3003 THRU 3007
- 3301



Revised RAA 7/25/2006

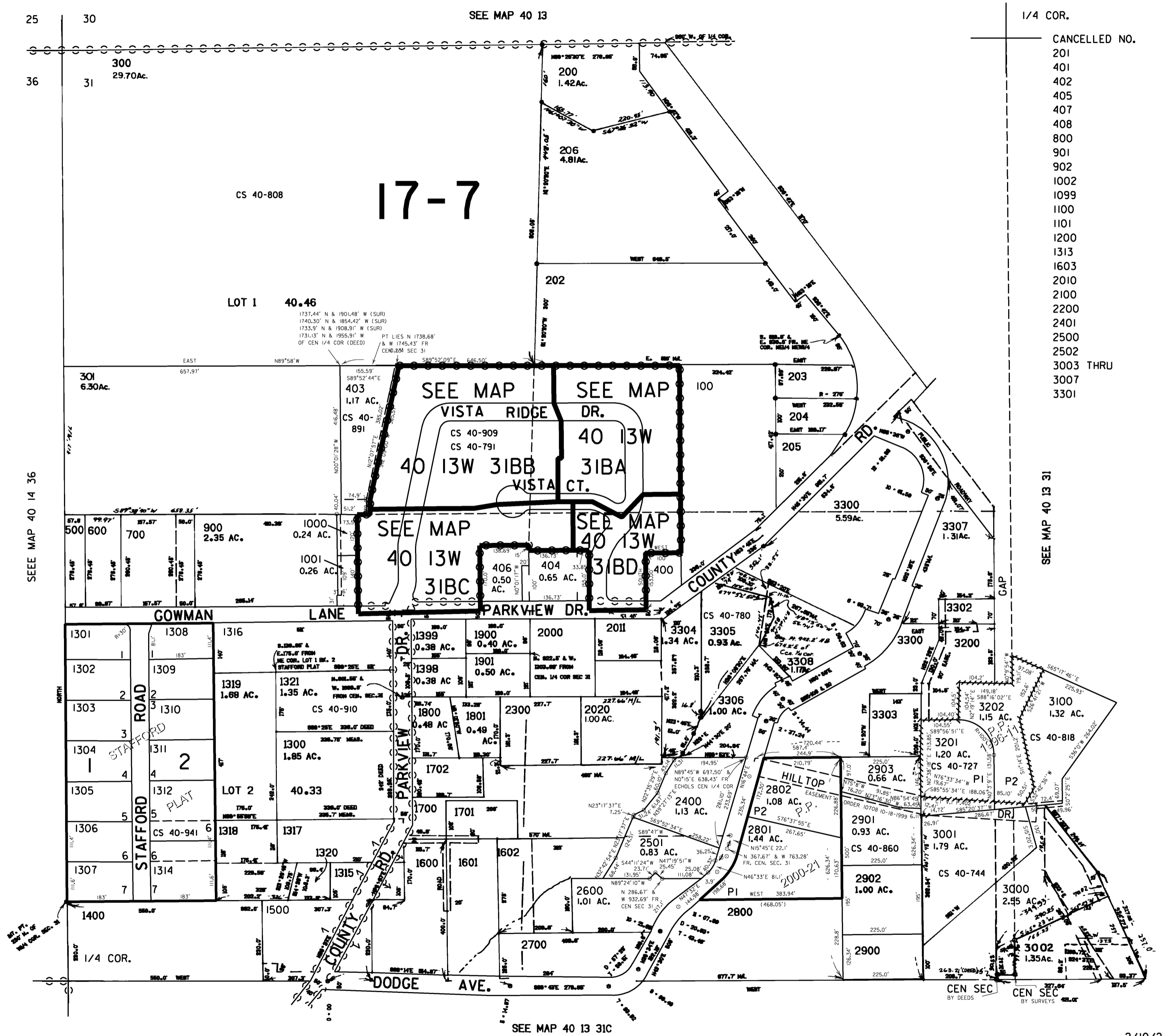
40S 13W 31B & INDEX

THIS MAP WAS PREPARED FOR ASSESSMENT PURPOSE ONLY

NW1/4 SEC. 31 T.40S. R.13W. W.M. CURRY COUNTY

40 13 31B

1" = 200'



- CANCELLED NO.
- 201
- 401
- 402
- 405
- 407
- 408
- 800
- 901
- 902
- 1002
- 1099
- 1100
- 1101
- 1200
- 1313
- 1603
- 2010
- 2100
- 2200
- 2401
- 2500
- 2502
- 3003 THRU
- 3007
- 3301

