

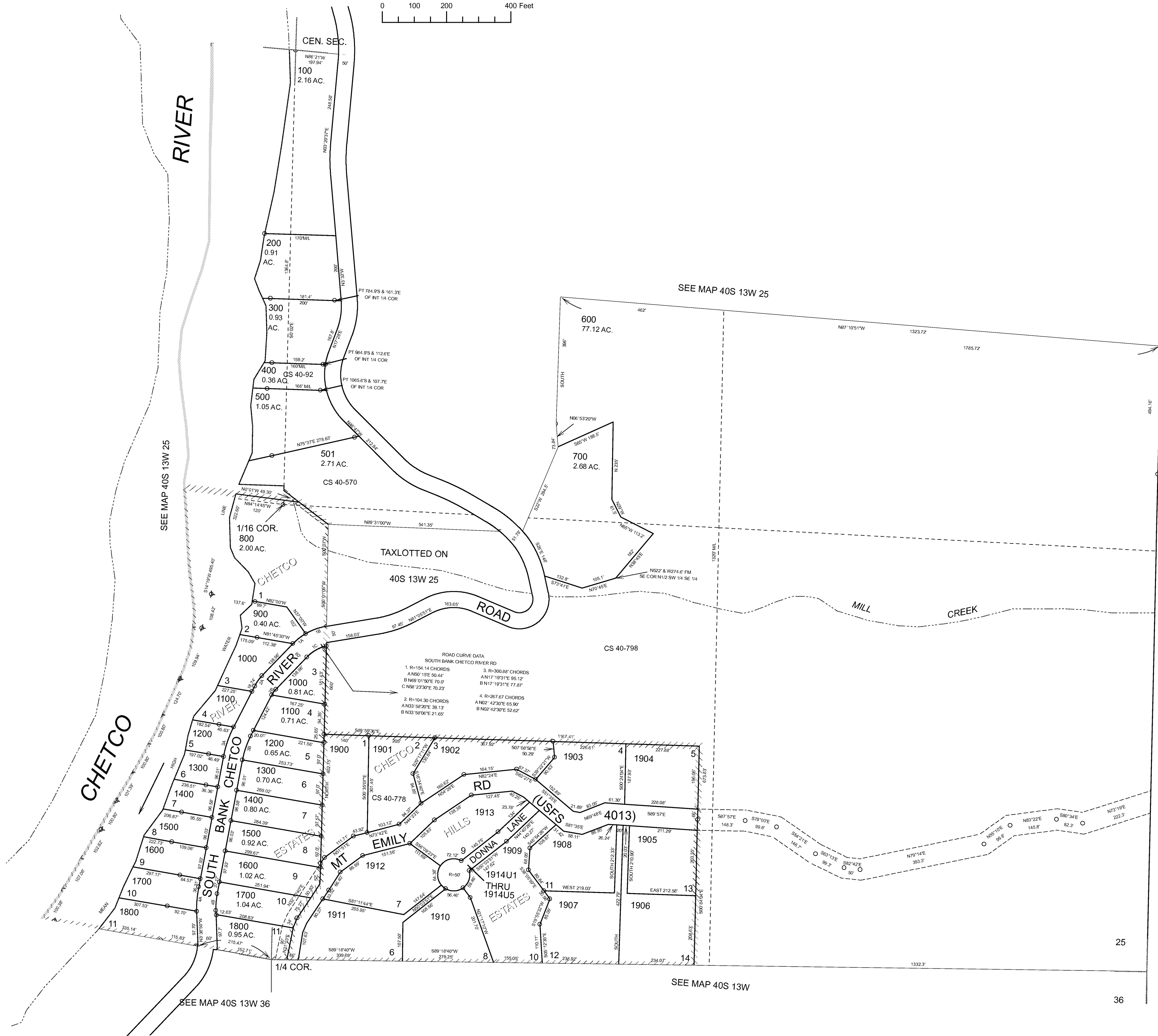
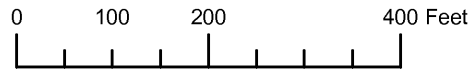
THIS MAP WAS PREPARED FOR ASSESSMENT PURPOSE ONLY

SE1/4 SECTION 25 T.40S. R.13W. W.M. CURRY COUNTY

1" = 200'

40S 13W 25D

CANCELLED NO. 1900U1 THRU 1913U2



SEE MAP 40S 13W 25

SEE MAP 40S 13W 25

SEE MAP 40S 12W

ROAD CURVE DATA
SOUTH BANK CHETCO RIVER RD

1. R=154.14 CHORDS A N50°15'E 50.44' B N89°01'50"E 70.07' C N68°23'30"E 70.23'	3. R=300.88' CHORDS A N17°19'31"E 85.12' B N17°19'31"E 77.87'
2. R=104.30 CHORDS A N33°58'20"E 39.13' B N33°58'06"E 21.65'	4. R=267.67 CHORDS A N2°42'30"E 65.90' B N02°42'30"E 52.62'

SEE MAP 40S 13W 36

SEE MAP 40S 13W

36

Revised RAA 3/8/2006

40S 13W 25D

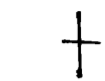
SE1/4 SEC. 25 T.40S. R.13W. W.M.
CURRY COUNTY

40 13 25D

THIS MAP WAS PREPARED FOR
ASSESSMENT PURPOSE ONLY

1"=200'

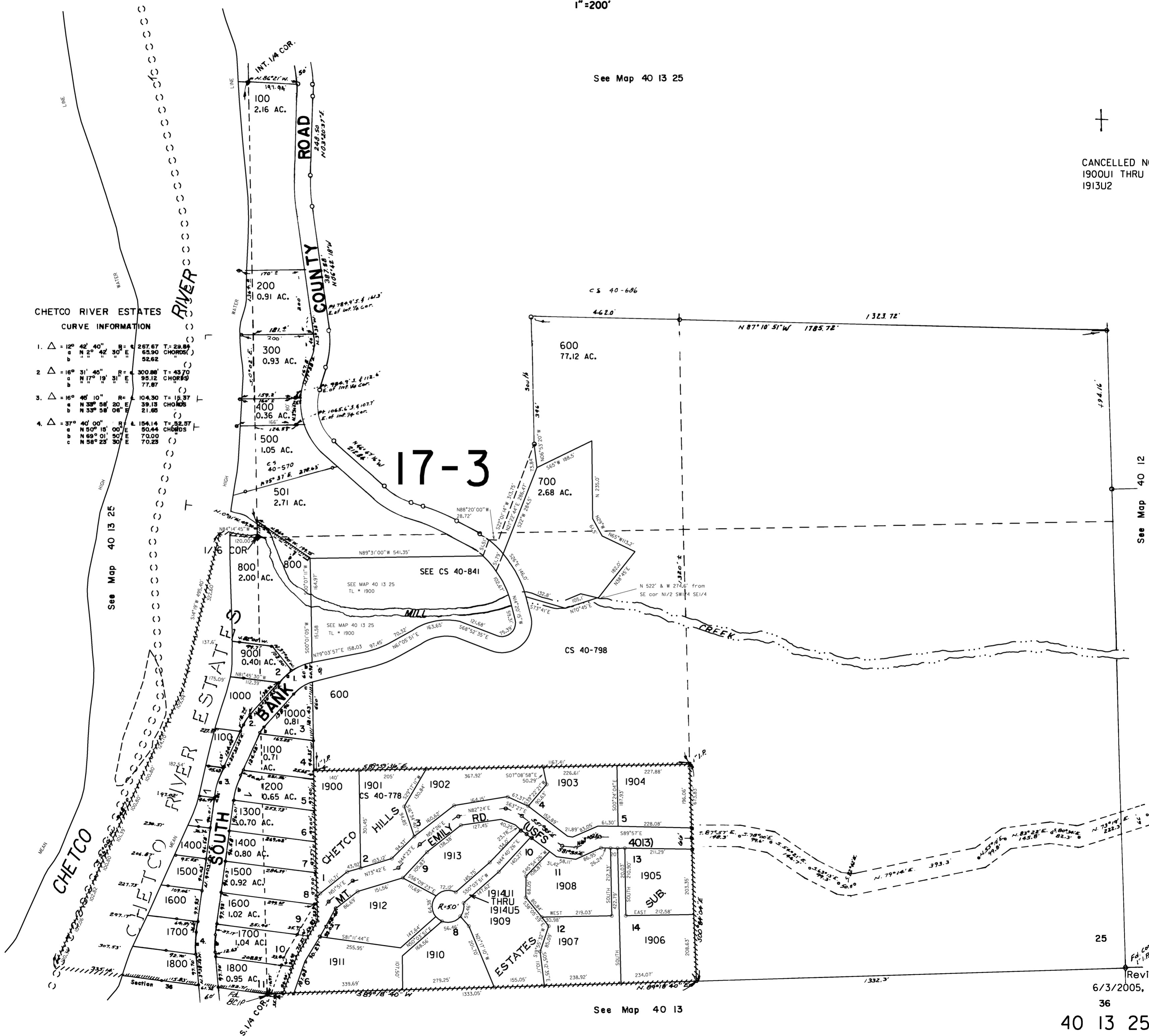
See Map 40 13 25



CANCELLED NO.'S
1900U1 THRU
1913U2

CHETCO RIVER ESTATES
CURVE INFORMATION

1. $\Delta = 12^\circ$
a $N 2^\circ 40' 40'' E$ R = 267.67 T = 29.84
b $N 2^\circ 42' 30'' E$ 65.90 CHORDS
c 52.62
2. $\Delta = 16^\circ$
a $N 17^\circ 19' 31'' E$ R = 300.88 T = 43.70
b 95.12 CHORDS
c 77.87
3. $\Delta = 16^\circ$
a $N 38^\circ 58' 20'' E$ R = 104.30 T = 15.37
b $N 38^\circ 58' 08'' E$ 39.13 CHORDS
c 21.65
4. $\Delta = 37^\circ$
a $N 50^\circ 15' 00'' E$ R = 154.14 T = 52.57
b $N 69^\circ 01' 50'' E$ 50.44 CHORDS
c $N 58^\circ 23' 30'' E$ 70.00
d 70.23



See Map 40 13 25

See Map 40 12

See Map 40 13

Revised
6/3/2005, DBJ

36
40 13 25D