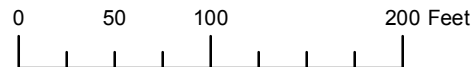


THIS MAP WAS PREPARED FOR ASSESSMENT PURPOSE ONLY

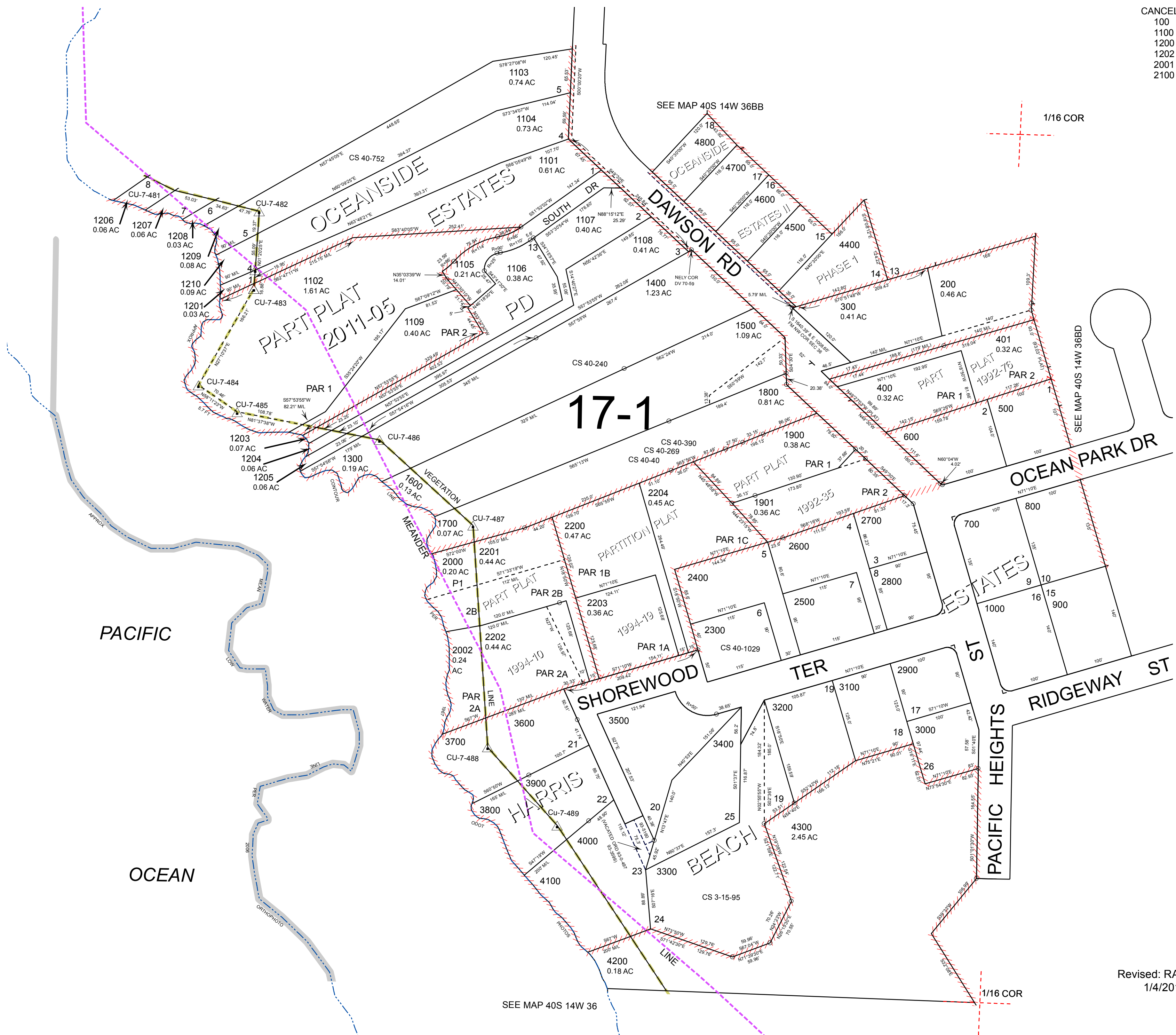


S.W.1/4 N.W.1/4 SEC.36 T.40S. R.14W. W.M.
CURRY COUNTY

1" = 100'

40S14W36BC
BROOKINGS

CANCELLED:
100
1100
1200
1202
2001
2100



1/16 COR

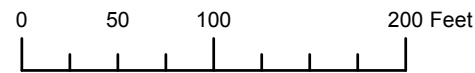
SEE MAP 40S 14W 36BD

SEE MAP 40S 14W 36B

Revised: RAA
1/4/2012

BROOKINGS
40S14W36BC

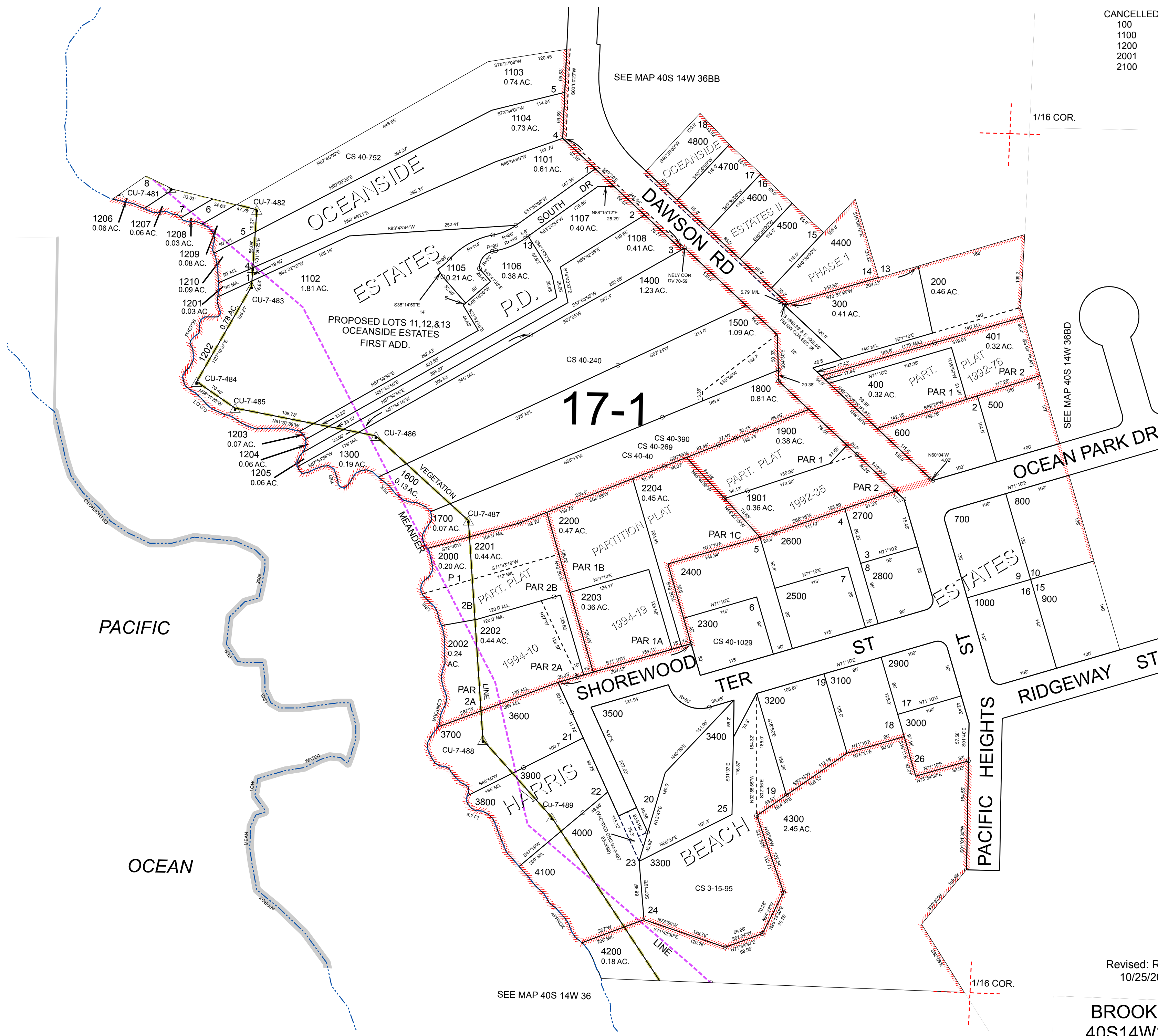
THIS MAP WAS PREPARED FOR ASSESSMENT PURPOSE ONLY



S.W.1/4 N.W.1/4 SEC.36 T.40S. R.14W. W.M. CURRY COUNTY 1" = 100'

40S14W36BC BROOKINGS

CANCELLED:
100
1100
1200
2001
2100



17-1

PACIFIC

OCEAN

PACIFIC HEIGHTS ST

RIDGEWAY ST

SHOREWOOD TER

OCEAN PARK DR

SEE MAP 40S 14W 36BB

SEE MAP 40S 14W 36

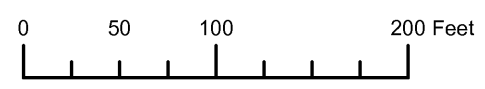
1/16 COR.

SEE MAP 40S 14W 36BD

Revised: RAA 10/25/2010

BROOKINGS 40S14W36BC

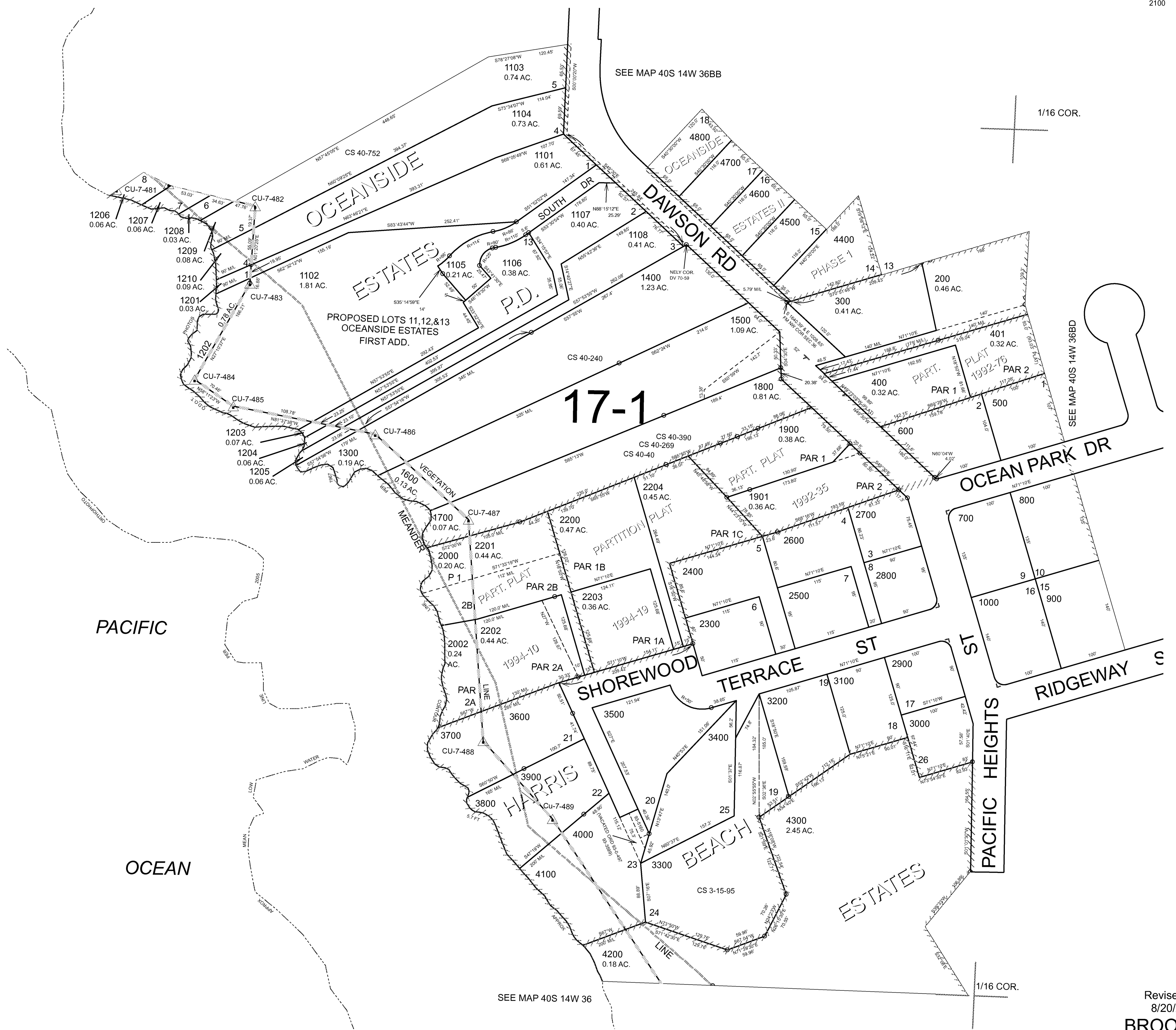
THIS MAP WAS PREPARED FOR ASSESSMENT PURPOSE ONLY



SW1/4 NW1/4 SECTION 36 T.40S. R.14W. W.M.
CURRY COUNTY
1" = 100'

40S 14W 36BC
BROOKINGS

CANCELLED NO.
100
1100
1200
2001
2100



17-1

1/16 COR.

SEE MAP 40S 14W 36BD

SEE MAP 40S 14W 36

1/16 COR.

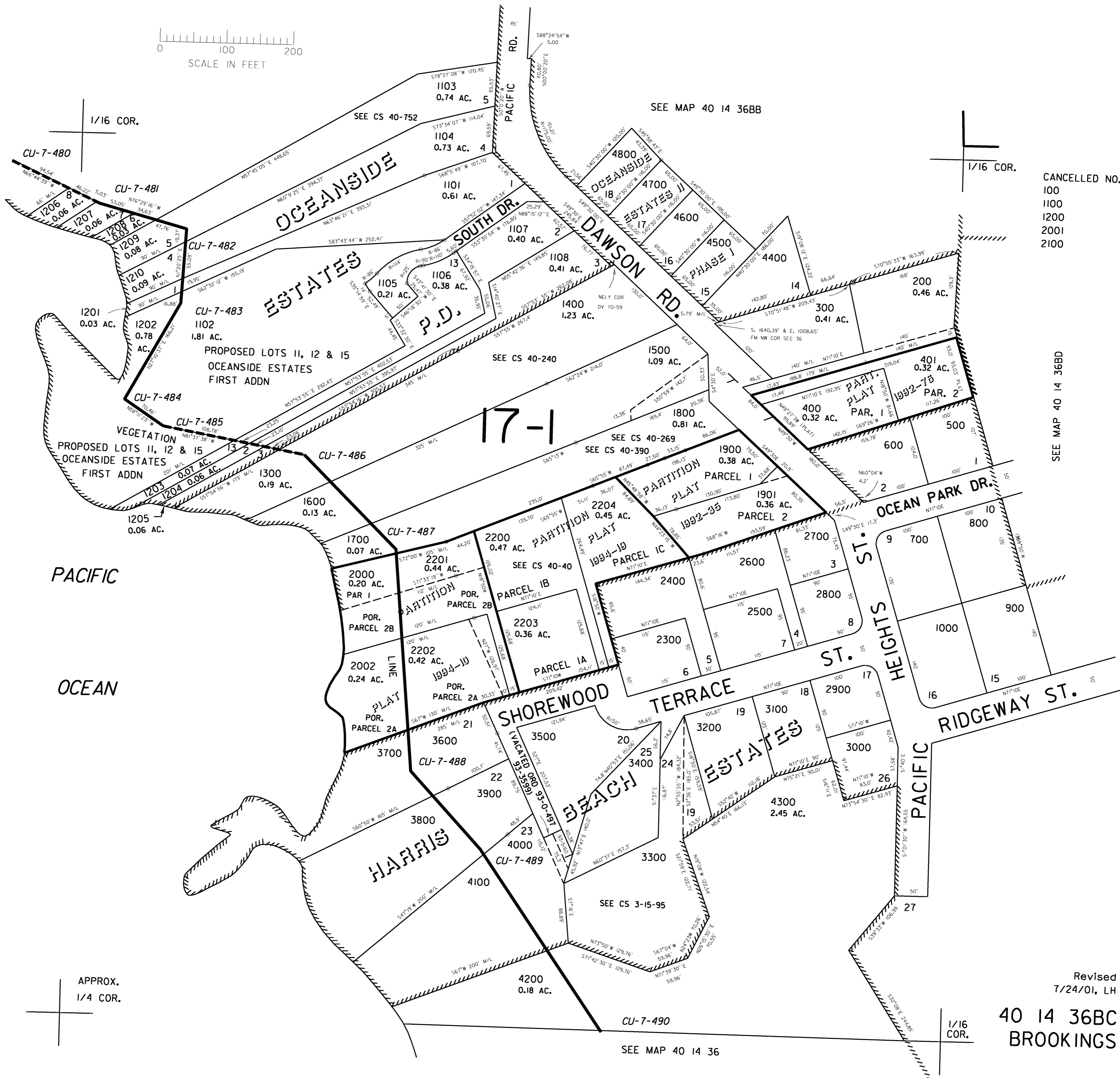
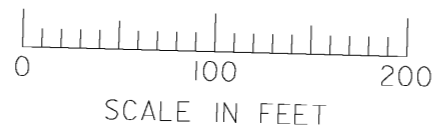
Revised RAA
8/20/2006
BROOKINGS
40S 14W 36BC

THIS MAP WAS PREPARED FOR
ASSESSMENT PURPOSE ONLY

SW1/4 NW1/4 SEC. 36 T.40S. R.14W. W.M.
CURRY COUNTY

1" = 100'

40 14 36BC
BROOKINGS



CANCELLED NO.
100
1100
1200
2001
2100

SEE MAP 40 14 36BD

PACIFIC

OCEAN

APPROX.
1/4 COR.

Revised
7/24/01, LH

40 14 36BC
BROOKINGS