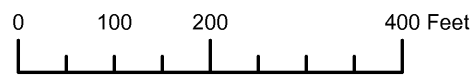


THIS MAP WAS PREPARED FOR ASSESSMENT PURPOSE ONLY

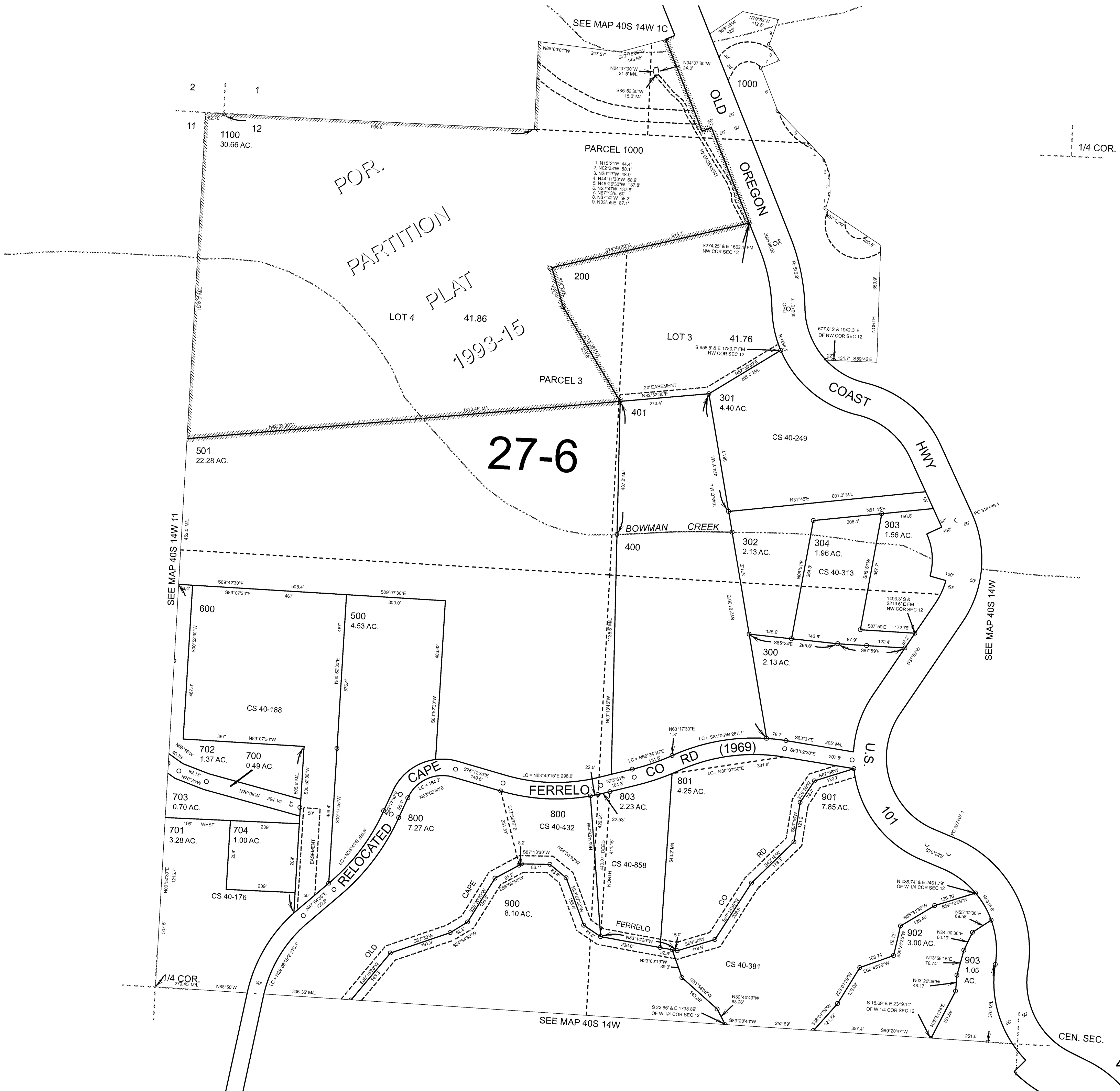


N.W.1/4 SEC.12 T.40S. R.14W. W.M. CURRY COUNTY

1" = 200'

40S14W12B

CANCELLED:
100
802
804



1/4 COR.

SEE MAP 40S 14W

SEE MAP 40S 14W 11

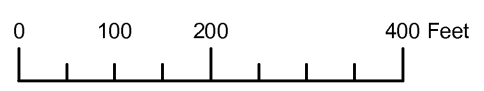
SEE MAP 40S 14W

CEN. SEC.

Revised: RAA
6/25/2009

40S14W12B

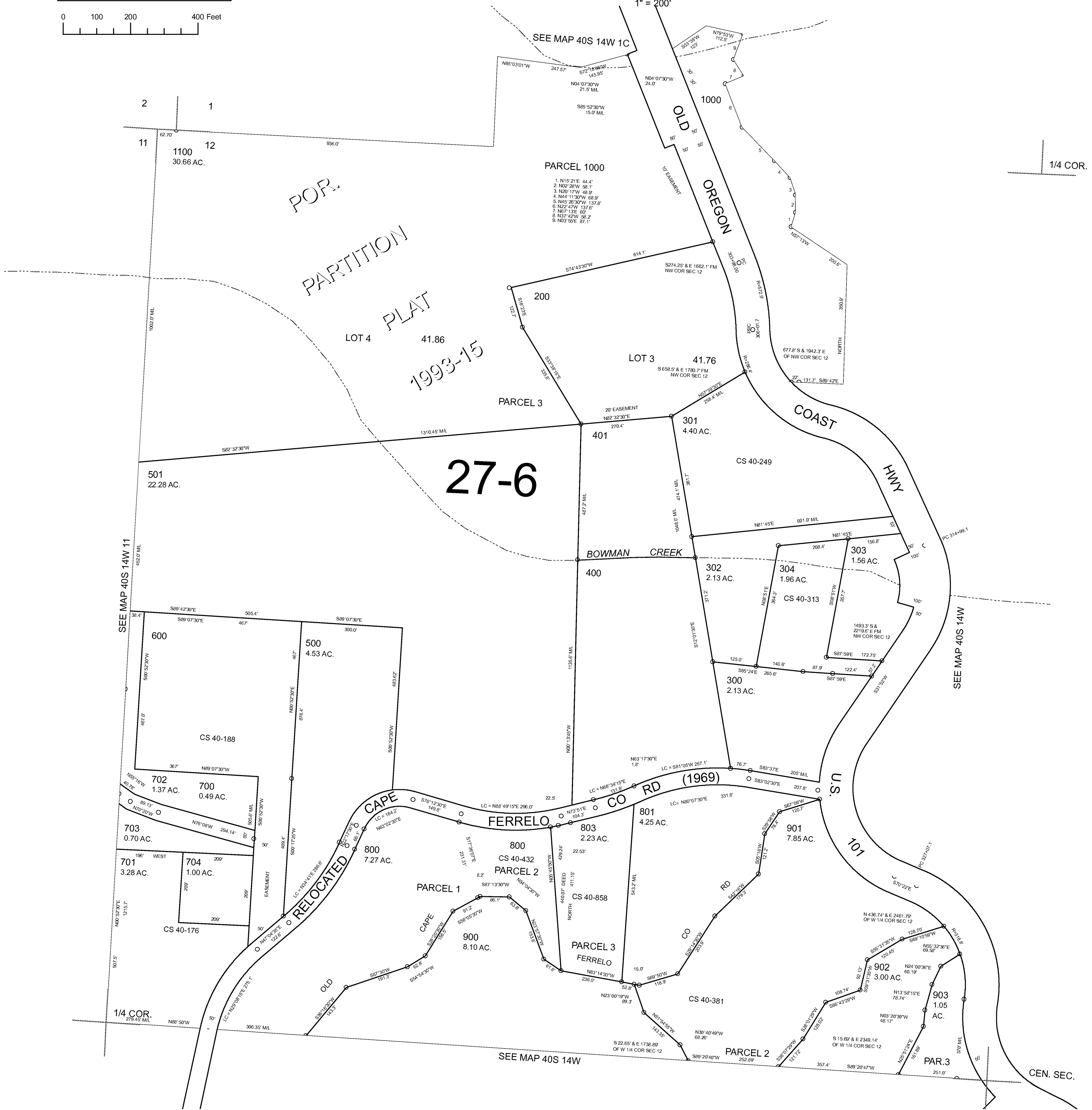
THIS MAP WAS PREPARED FOR ASSESSMENT PURPOSE ONLY



NW1/4 SECTION 12 T.40S. R.14W. W.M. CURRY COUNTY

40S 14W 12B

CANCELLED NO. 100 802 804



1/4 COR.

Revised RAA 8/20/2006

40S 14W 12B

