

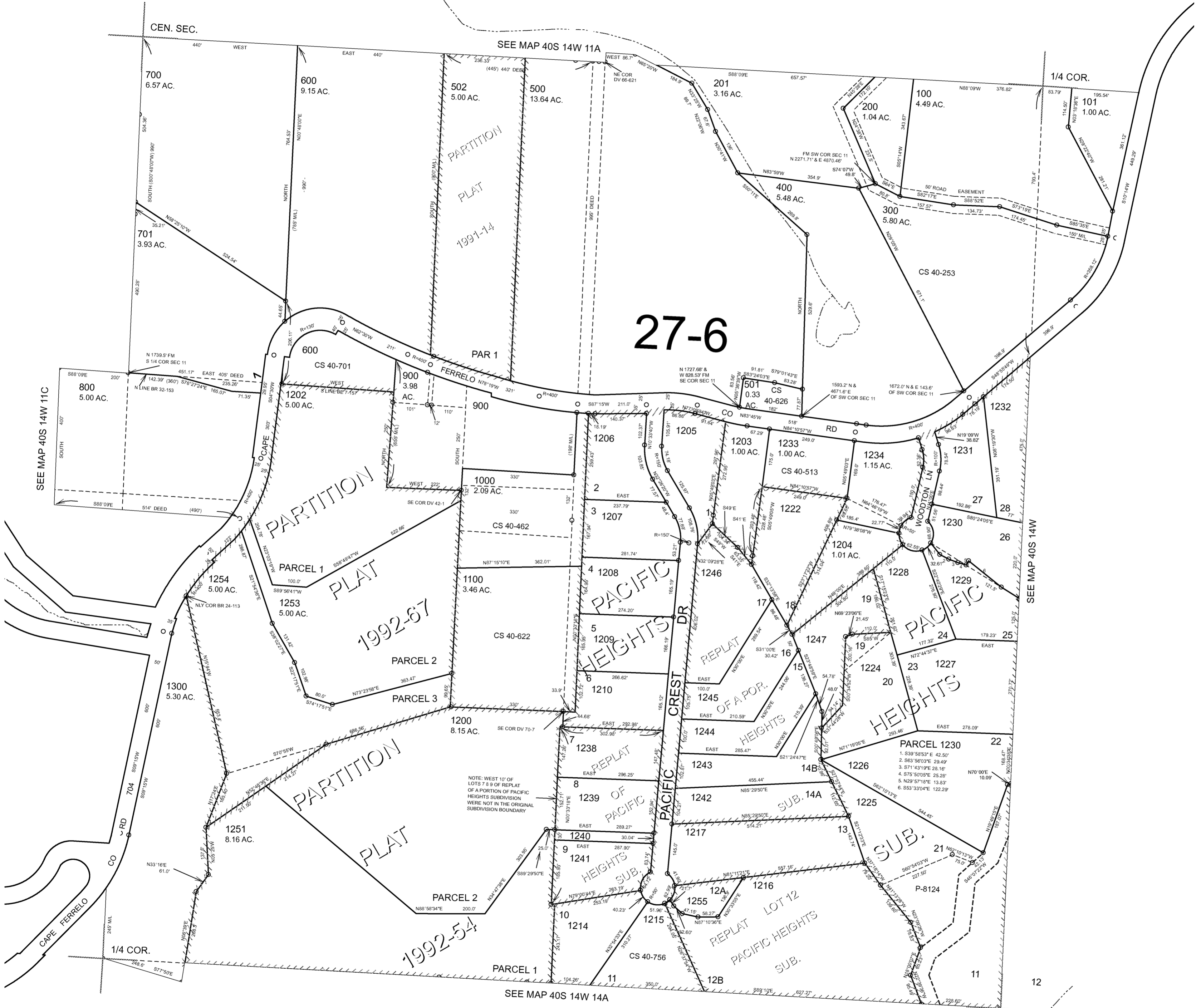
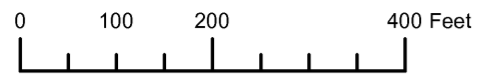
THIS MAP WAS PREPARED FOR ASSESSMENT PURPOSE ONLY

SE1/4 SECTION 11 T.40S. R.14W. W.M. CURRY COUNTY

1" = 200'

40S 14W 11D

CANCELLED NO. 1235 THRU 1237 1211 THRU 1213 1218 THRU 1221 1223 1248 1101 1249 1250 1252

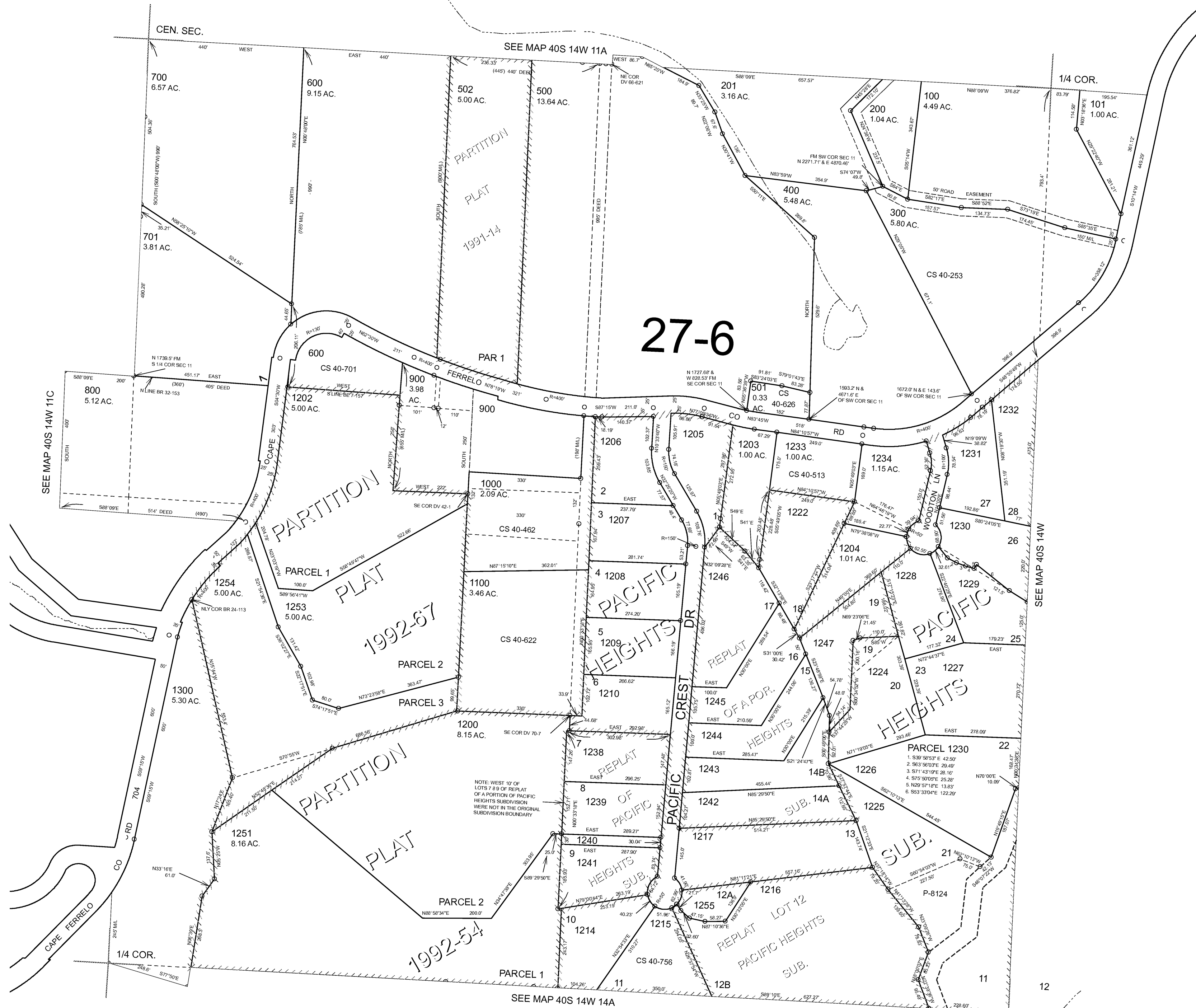
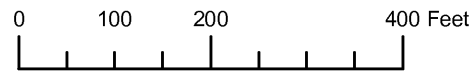


SE1/4 SECTION 11 T.40S. R.14W. W.M.  
CURRY COUNTY  
1" = 200'

40S 14W 11D

CANCELLED NO.  
1235 THRU 1237  
1211 THRU 1213  
1218 THRU 1221  
1223  
1248  
1101  
1249  
1250  
1252

THIS MAP WAS PREPARED FOR  
ASSESSMENT PURPOSE ONLY



NOTE: WEST 10' OF  
LOTS 7 & 8 OF REPLAT  
OF A PORTION OF PACIFIC  
HEIGHTS SUBDIVISION  
WERE NOT IN THE ORIGINAL  
SUBDIVISION BOUNDARY

THIS MAP WAS PREPARED FOR  
ASSESSMENT PURPOSE ONLY

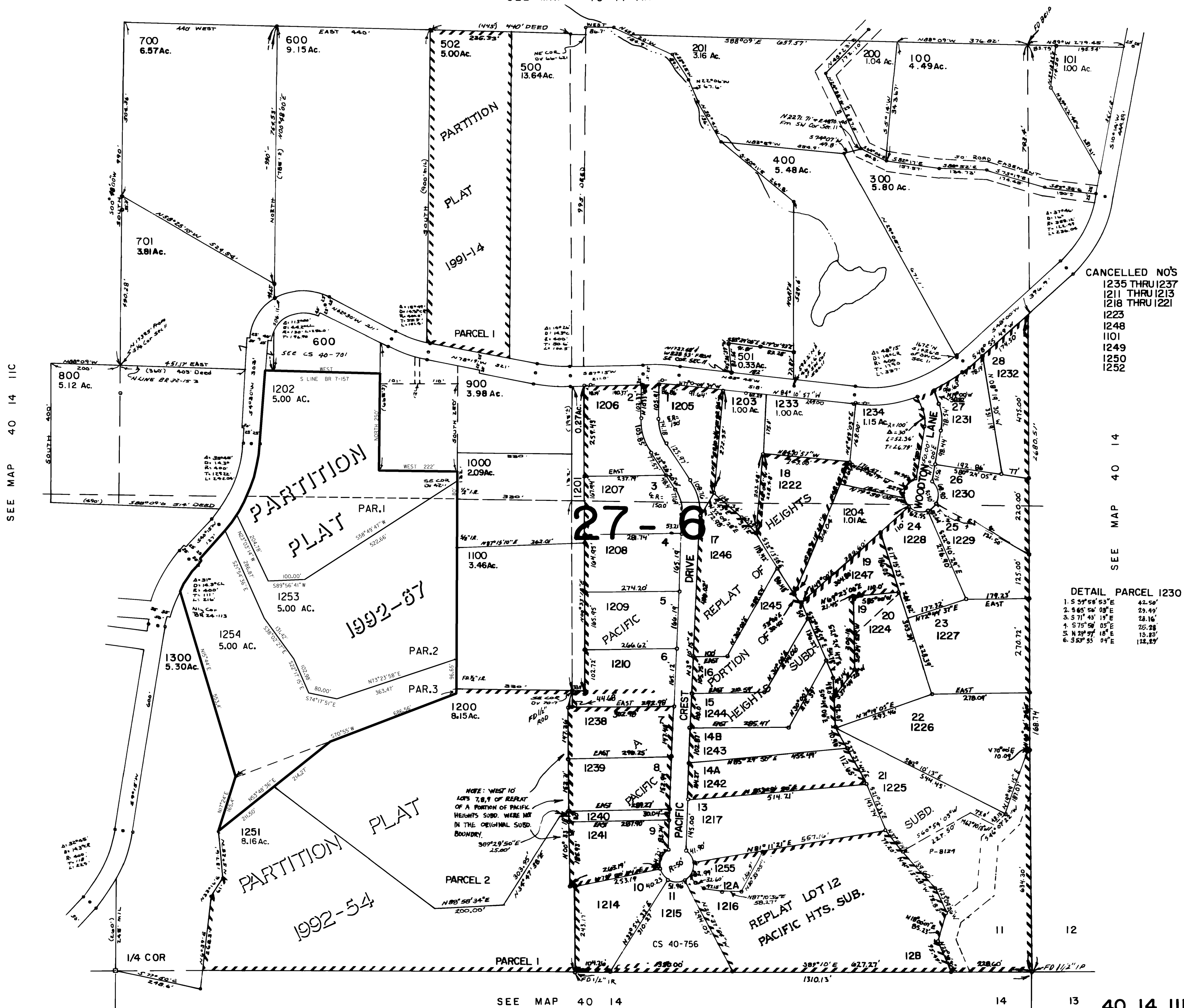
SE1/4 SEC. 11 T. 40S. R. 14W. W.M.

40 14 IID

CURRY COUNTY

1" = 200'

SEE MAP 40 14 IIA



CANCELLED NO'S  
1235 THRU 1237  
1211 THRU 1213  
1218 THRU 1221  
1223  
1248  
1101  
1249  
1250  
1252

DETAIL PARCEL 1230  
1. S 35° 58' 53" E 42.50'  
2. S 65° 56' 08" E 29.49'  
3. S 71° 43' 19" E 28.16'  
4. S 75° 58' 05" E 25.28'  
5. N 29° 57' 18" E 19.85'  
6. S 53° 35' 04" E 12.85'

SEE MAP 40 14

14

13

40 14 IID