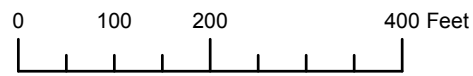


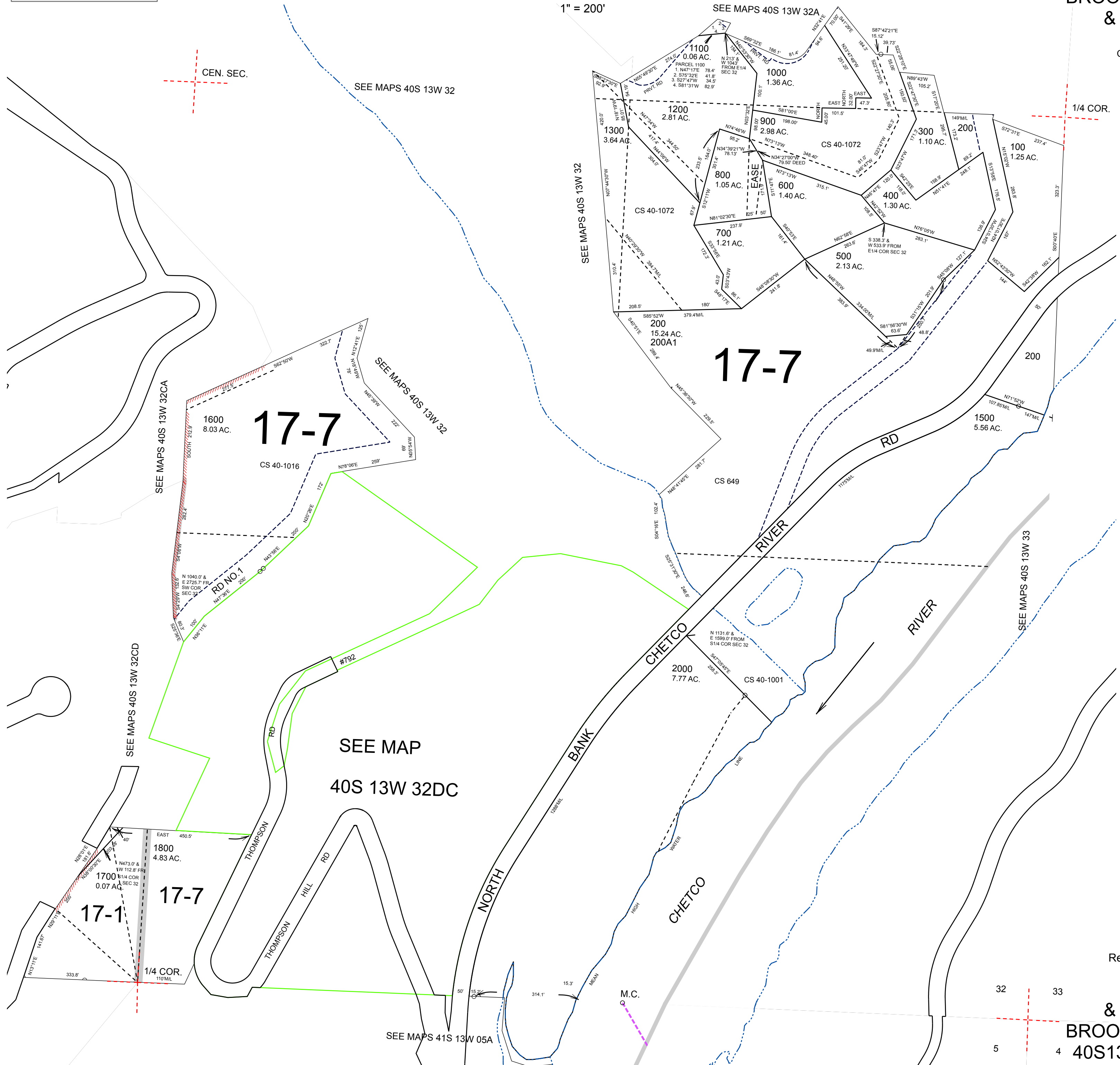
THIS MAP WAS PREPARED FOR ASSESSMENT PURPOSE ONLY



S.E. 1/4 SEC. 32 T. 40S. R. 13W. W.M. CURRY COUNTY 1" = 200'

40S13W32D BROOKINGS & INDEX

CANCELLED: 1400 1900



CEN. SEC. SEE MAPS 40S 13W 32

17-7 1600 8.03 AC. CS 40-1016

SEE MAPS 40S 13W 32A 1100 0.06 AC. 1000 1.36 AC. 1200 2.81 AC. 900 2.98 AC. 1300 3.64 AC. 800 1.05 AC. 700 1.21 AC. 600 1.40 AC. 500 2.13 AC. 200 15.24 AC. 200A1

17-7

SEE MAPS 40S 13W 32CD 17-1 1800 4.83 AC. 1700 0.07 AC. 17-7

SEE MAP 40S 13W 32DC

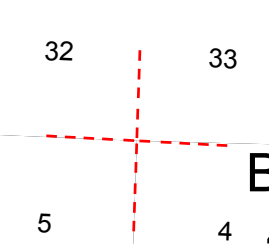
SEE MAPS 41S 13W 05A

1/4 COR.

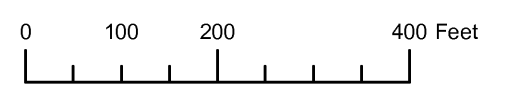
SEE MAPS 40S 13W 33

Revised: RAA 2/10/2011

& INDEX BROOKINGS 40S13W32D

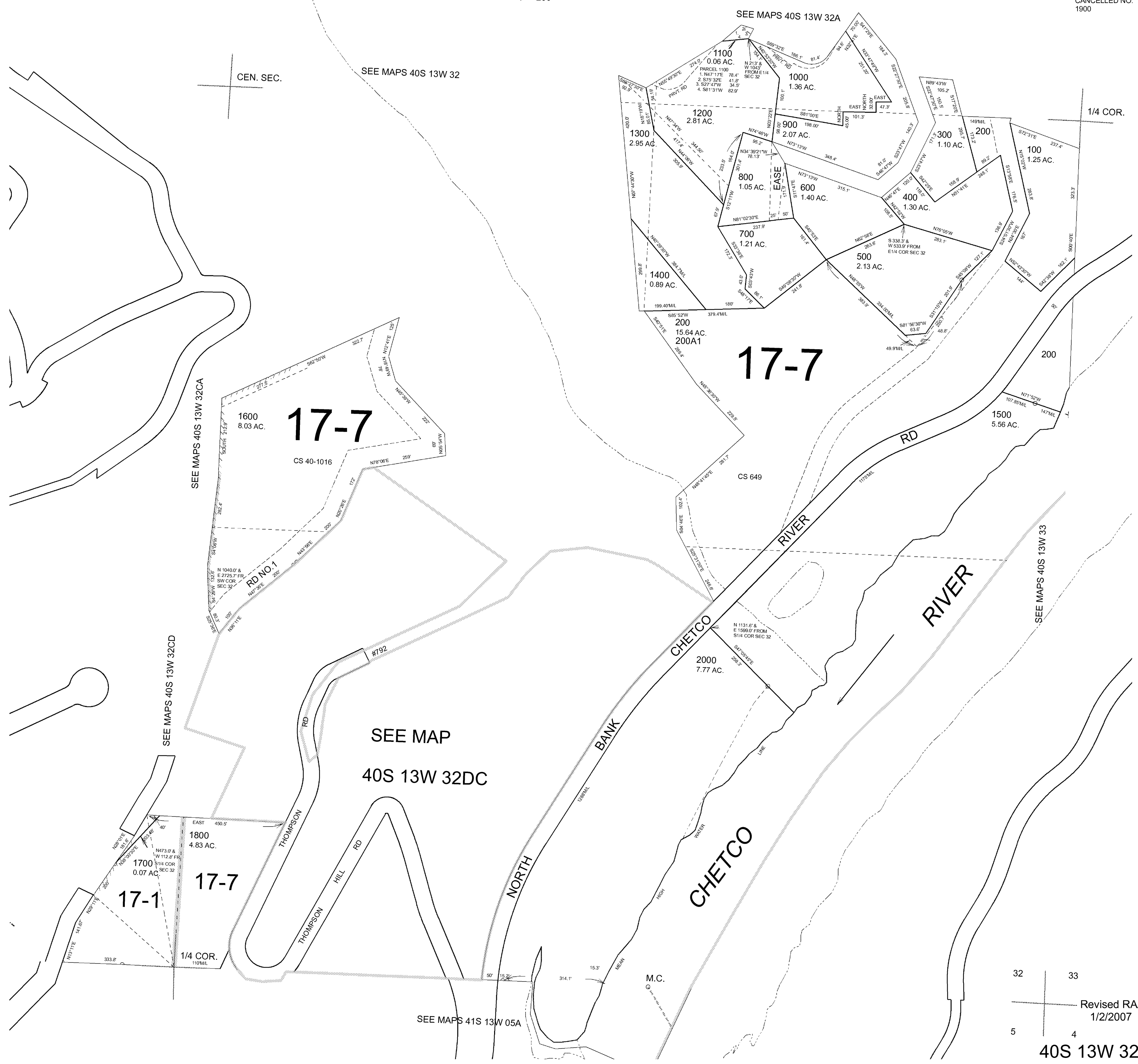


THIS MAP WAS PREPARED FOR ASSESSMENT PURPOSE ONLY



SE1/4 SECTION 32 T.40S. R.13W. W.M. CURRY COUNTY 1" = 200'

40S 13W 32D & INDEX CANCELLED NO. 1900



SEE MAPS 40S 13W 32CA

SEE MAPS 40S 13W 32

SEE MAPS 40S 13W 32A

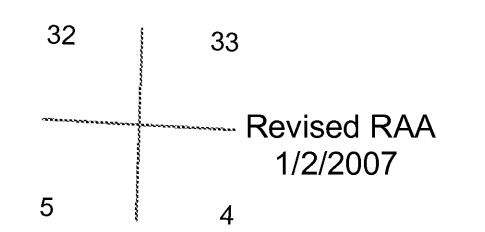
SEE MAPS 40S 13W 32CA

SEE MAPS 40S 13W 32CD

SEE MAP 40S 13W 32DC

SEE MAPS 41S 13W 05A

SEE MAPS 40S 13W 33



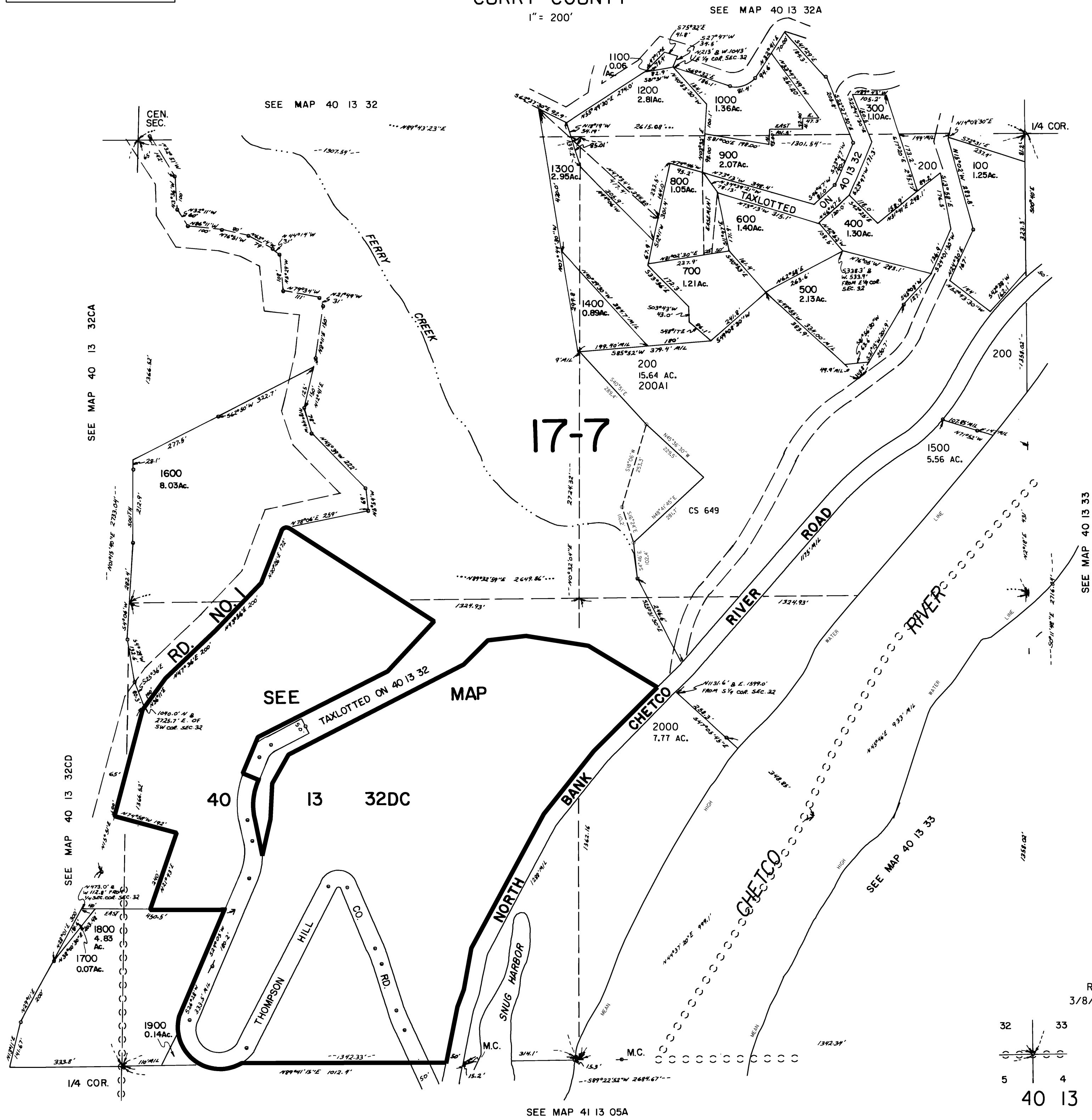
Revised RAA 1/2/2007 40S 13W 32D & INDEX

THIS MAP WAS PREPARED FOR
ASSESSMENT PURPOSE ONLY

SE1/4 SEC. 32 T.40S. R.13W. W.M.
CURRY COUNTY

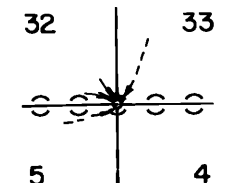
40 13 32D

1" = 200'



SEE MAP 40 13 33

Revised
3/8/02, CS



40 13 32D